

# World Journal of *Orthopedics*

*World J Orthop* 2015 June 18; 6(5): 409-445





## Editorial Board

2015-2018

The *World Journal of Orthopedics* Editorial Board consists of 328 members, representing a team of worldwide experts in orthopedics. They are from 41 countries, including Australia (10), Austria (8), Bangladesh (1), Belgium (4), Brazil (10), Canada (4), Chile (1), China (29), Croatia (2), Cyprus (1), Denmark (2), Egypt (5), Finland (1), France (2), Germany (19), Greece (12), Hungary (1), India (17), Iran (4), Israel (6), Italy (21), Japan (14), Jordan (2), Malaysia (1), Netherlands (10), New Zealand (1), Poland (1), Saudi Arabia (2), Serbia (1), Singapore (4), Slovenia (2), South Korea (12), Spain (7), Sri Lanka (1), Sweden (8), Switzerland (4), Thailand (5), Turkey (11), United Arab Emirates (1), United Kingdom (16), and United States (65).

### EDITORS-IN-CHIEF

Quanjun (Trey) Cui, *Charlottesville*  
Bao-Gan Peng, *Beijing*

### GUEST EDITORIAL BOARD MEMBERS

Yuk-Kwan Chen, *Kaohsiung*  
Sheng-Mou Hou, *Taipei*  
Tsan-Wen Huang, *Pu-Tz City*  
Yen-Hsuan Jean, *Pingtung*  
Ko-Hsiu Lu, *Tajchung*  
Wei-Ren Su, *Tainan*  
Yih-Wen Tarng, *Kaohsiung*  
Kuo-Wei Wang, *Kaohsiung*  
James Cheng-Chung Wei, *Taichung*

### MEMBERS OF THE EDITORIAL BOARD



#### Australia

Nicky Bertollo, *Sydney*  
Stuart Adam Callary, *Adelaide*  
Changhai Ding, *Hobart*  
Herwig Drobetz, *Mackay*  
Melanie Jane Franklyn, *Melbourne*  
Laurent Frossard, *Brisbane*  
Pazit Levinger, *Melbourne*  
Munjed Al Muderis, *Sydney*  
Gordon L Slater, *Sydney*  
Lucian Bogdan Solomon, *Adelaide*



#### Austria

Christian Krasny, *Vienna*  
Florian M Kovar, *Vienna*  
Gerold Labek, *Innsbruck*

Stefan Marlovits, *Vienna*  
Lukas Leopold Negrin, *Himberg*  
Reinhold Ortmaier, *Salzburg*  
Patrick Sadoghi, *Graz*  
Klemens Trieb, *Wels*



#### Bangladesh

Saidur Rahman Mashreky, *Dhaka*



#### Belgium

Olivier Bruyere, *Liege*  
Andre Farasyn, *Ghent*  
Tom Van Leemput, *Zandhoven*  
Geert Meermans, *Berchem*



#### Brazil

Rogério Serpone Bueno, *Sao Paulo*  
Gustavo Constantino de Campos, *Campinas*  
Reginaldo K Fukuchi, *Sao Paulo*  
Tiago Lazzaretti Fernandes, *Sao Paulo*  
Mauro Cesar de Moraes Filho, *Sao Paulo*  
Alexandre Leme Godoy-Santos, *Sao Paulo*  
Andrei Fernandes Joaquim, *Campinas*  
Daniel F Martins, *Palhoca*  
Leonardo Metsavaht, *Rio de Janeiro*  
Francis Trombini-Souza, *Sao Paulo*



#### Canada

Kivanc Atesok, *Etobicoke*  
Marwan El-Rich, *Edmonton*  
Richard Kremer, *Montreal*

Neetu Rishiraj, *Vancouver*



#### Chile

Dante Parodi, *Santiago*



#### China

Wing-Hoi Cheung, *Hong Kong*  
Lin Guo, *Chongqing*  
Yong Qiang Hao, *Shanghai*  
Chen Jiao, *Beijing*  
Winson Chiu-Chun Lee, *Hong Kong*  
Jian-Min Li, *Jinan*  
Pauline Po Yee Lui, *Hong Kong*  
Dong-Yang Ma, *Lanzhou*  
Wei-Min Pan, *Xi'an*  
Kang-Lai Tang, *Chongqing*  
Defeng Wang, *Hong Kong*  
Yu Wang, *Beijing*  
Qing Xia, *Shanghai*  
Ya-Yi Xia, *Lanzhou*  
Xi-Jie Yu, *Chengdu*  
Xiao-Lei Zhang, *Wenzhou*  
Jian-Hua Zhao, *Chongqing*  
Jian-Ning Zhao, *Nanjing*  
Ping Zhen, *Lanzhou*



#### Croatia

Goran Bicanic, *Zagreb*  
Srećko Sabalic, *Zagreb*



#### Cyprus

Michalis Zenios, *Limassol*



### Denmark

Lars C Borris, *Arhus*  
Morten Tange Kristensen, *Hvidovre*



### Egypt

Barakat Sayed El-Alfy, *Mansoura*  
Khaled M Emara, *Cairo*  
Mohamed Mostafa Hosney El-Sayed, *Tanta*  
Mohammad Masoud, *Assiut*  
Elsayed Ibraheem Elsayed Massoud, *Sohag*



### Finland

Hannu T Aro, *Turku*



### France

Federico Canavese, *Clermont Ferrand*  
Hechmi Toumi, *Orleans*



### Germany

Ahmet Ali Altintas, *Koln*  
Hagen Andruszkow, *Aachen*  
Mike H Baums, *Wiesbaden*  
Peter Bernstein, *Dresden*  
Bilal Farouk El-Zayat, *Marburg*  
Ahmad M Eweida, *Ludwigshafen*  
Chrisitan B Frank, *Baden-Baden*  
Michael Frink, *Marburg*  
Andreas B Imhoff, *Munich*  
Chlodwig Kirchhoff, *Munich*  
Matthias Knobe, *Aachen*  
Hans-Christoph Pape, *Aachen*  
Markus Peter Regauer, *Munich*  
Khaled Hamed Salem, *Paderborn*  
Frank M Schiedel, *Muenster*  
Volker Schoeffl, *Bamberg*  
Hagen Schmal, *Freiburg*  
Fritz Thorey, *Heidelberg*  
Tobias Topp, *Berlin*



### Greece

Antonios Angoules, *Athens*  
Georgios I Drosos, *Alexandroupolis*  
Konstantinos Fousekis, *Egio*  
Michael Hantes, *Larissa*  
Marios G Lykissas, *Athens*  
George A Macheras, *Athens*  
Konstantinos N Malizos, *Larissa*  
Dimitrios Nikolopoulos, *Athens*  
Vassilis Paschalis, *Trikala*  
Dionysios J Papachristou, *Patras*  
Georgios Constantinos Papachristou, *Athens*  
Haris S Vasiliadis, *Ioannina*



### Hungary

Andor Sebestyén, *Pécs*



### India

Vikas Bachhal, *Chandigarh*  
Roopesh Kumar VR, *Pondicherry*  
Vikas Kulshrestha, *Delhi*  
Ashokkumar Navratnamal Johari, *Mumbai*  
Pramod V Lokhande, *Pune*  
Vivek Mahajan, *New Delhi*  
Karthik Selvaraj Murugappan, *Coimbatore*  
Satya Ranjan Patra, *Bhubaneswar*  
V Prakash, *Anand*  
Joshua Samuel Rajkumar, *MPT, Bangalore*  
Parag Sancheti, *Pune*  
Gaurav Sharma, *Chandigarh*  
Mohamed Shafi, *Gangavalli*  
Ajay Pal Singh, *Punjab*  
Sujit Kumar Tripathy, *Bhubaneswar*  
Raju Vaishya, *New Delhi*  
Divya Vohora, *New Delhi*



### Iran

MT Karimi, *Isfahan*  
Firooz Madadi, *Tehran*  
Mohammad Ali Mohseni-Bandpei, *Tehran*  
Amir Hossein Saveh, *Tehran*



### Israel

Alexander Blankstein, *Ramat HaSharon*  
Itay Fenichel, *Udim*  
Youssef Maher Masharawi, *Tel Aviv*  
Nahum Rosenberg, *Haifa*  
Jona J Sela, *Jerusalem*  
Yehuda Ullmann, *Haifa*



### Italy

Alessandro Aprato, *Torino*  
Andrea Angelini, *Bologna*  
Luigi Valentino Berra, *Milano*  
Matteo Cadossi, *Bologna*  
Lawrence Camarda, *Palermo*  
Giuseppe Maurizio Campo, *Messina*  
Andrea Camera, *Pietra Ligure*  
Stefano Carbone, *Rome*  
Patrizia D'Amelio, *Torino*  
Cesare Faldini, *Bologna*  
Olimpio Galasso, *Catanzaro*  
Umile Giuseppe Longo, *Roma*  
Alberto Grassi, *Bologna*  
Nicolò Martinelli, *Milan*  
Raffaele Mugnai, *Modena*  
Giuseppe Musumeci, *Catania*  
Roberto Postacchini, *Rome*  
Barbara Rossi, *Rome*  
Roberto Rossi, *Torino*

Stefano Marco Paolo Rossi, *Pavia*  
Luigi Tarallo, *Modena*



### Japan

Ukei Anazawa, *Ichikawa*  
Yoichi Aota, *Yokohama*  
Masahiro Hasegawa, *Tsu City*  
Takafumi Hiranaka, *Takatsuki*  
Eichi Itadera, *Narita*  
Hiroshi Kawaguchi, *Tokyo*  
Shigeru Kobayashi, *Eiheiji*  
Makoto Makishima, *Itabashi-ku*  
Kanji Mori, *Otsu*  
Tsuyoshi Ohishi, *Hamamatsu*  
Kazuya Oshima, *Osaka*  
Hirotaka Sano, *Sendai*  
Jun Takahashi, *Matsumoto*  
Kotaro Yamakado, *Fukui*



### Jordan

Alia A Alghwiri, *Amman*  
Bashar Abuzayed, *Irbid*



### Malaysia

Areezo Eshraghi, *Kuala Lumpur*



### Netherlands

Michel Pieter Jozef van den Bekerom, *Amsterdam*  
Peter RG Brink, *Maastricht*  
Yvon Marielle den Hartog, *Rotterdam*  
Izaak Frederik Kodde, *Amsterdam*  
Jesse WP Kuiper, *Alkmaar*  
Tom M van Raaij, *Groningen*  
Hugo Christiaan van der Veen, *Groningen*  
Alexander TM van de Water, *Enschede*  
Walter van der Weegen, *Geldrop*  
Eline W Zwitser, *Leiderdorp*



### New Zealand

Gary J Hooper, *Christchurch*



### Poland

Agnieszka Tomaszewska, *Gdańsk*



### Saudi Arabia

Ahmed Bakhsh, *Al-Khobar*  
Mohamed Zamzam, *Riyadh*



### Serbia

Miroslav Ziva Milankov, *Novi Sad*





### **Singapore**

Yee Han Dave Lee, *Singapore*  
 Anselm Mak, *Singapore*  
 Sean Ng, *Singapore*  
 Ken Lee Puah, *Singapore*



### **Slovenia**

Gregor Recnik, *Maribor*  
 Matjaz Sajovic, *Celje*



### **South Korea**

Yong Ahn, *Seoul*  
 Seung-Hoon Baek, *Daegu*  
 Chang-Ho Hwang, *Ulsan*  
 Jin Ho Hwang, *Seoul*  
 Jung-Taek Hwang, *Chuncheon*  
 Tae-Young Kim, *Anyang*  
 Sung-Uk Kuh, *Seoul*  
 Haejung Lee, *Busan*  
 Young-Kyun Lee, *Seongnam*  
 Soon Hyuck Lee, *Seoul*  
 Sang-Ki Lee, *Daejeon*  
 Hee-Soo Seo, *Seoul*



### **Spain**

Miguel Angel Ruiz Iban, *Madrid*  
 Rafael Arriaza, *La Coruna*  
 Enrique Guerado, *Malaga*  
 Albert Isidro, *Barcelona*  
 Sergio Hernandez-Sanchez, *Sant Joan D'alacant*  
 Nuria Vilaboa, *Madrid*  
 Rafael Villalba, *Córdoba*



### **Sri Lanka**

Janaka Lenora, *Galle*



### **Sweden**

Allan Abbott, *Linkoping*  
 Paul W Ackermann, *Enebyberg*  
 Johan von Heideken, *Stockholm*  
 Karin Larsson, *Gothenburg*  
 Anna Nordstrom, *Umea*  
 Yan Li, *Stockholm*  
 Jonas Ranstam, *Lund*  
 Ola Rolfson, *Gothenburg*



### **Switzerland**

Marco Barbero, *Manno*  
 Dimitrios-Stergios Evangelopoulos, *Bern*  
 Ladislav Mica, *Zurich*  
 Michael Tobias Hirschmann, *Bruderholz*



### **Thailand**

Sugalya Amatachaya, *Maung*  
 Theerachai Apivatthakakul, *Chiang Mai*  
 Wiroon Laupattarakasem, *Mueang*  
 Boonsin Tangtrakulwanich, *Hat Yai*  
 Tulyapruet Tawonsawatruk, *Bangkok*



### **Turkey**

Tuncay Colak, *Kocaeli*  
 Abdullah Demirtas, *Istanbul*  
 Mehmet Erdil, *Istanbul*  
 Kemal Gokkus, *Antalya*  
 Alper Kaya, *Istanbul*  
 Serdar Kahraman, *Istanbul*  
 Ramazan Kahveci, *Ankara*  
 Yavuz Kocabey, *Kocaeli*  
 sKemal Nas, *Sakarya*  
 Salih Ozgocmen, *Kayseri*  
 Namik Sahin, *Bursa*



### **United Arab Emirates**

Ashraf Fathi Hefny, *Al Ain*



### **United Kingdom**

Nawfal Al-Hadithy, *London*  
 Sarah Cartmell, *Manchester*  
 Nick Caplan, *Newcastle upon Tyne*  
 Andrew Douglas Carrothers, *Cambridge*  
 Efsthios Drampalos, *Wigan*  
 Prithee Jettoo, *Middlesbrough*  
 Saravana Vail Karuppiiah, *Nottingham*  
 Hammad Malik, *Manchester*  
 Riazuddin Mohammed, *Wigan*  
 Gohar Naqvi, *Cambridge*  
 Christopher William Oliver, *Edinburgh*  
 Philip Socrates Pastides, *London*  
 Greg A Robertson, *Edinburgh*  
 Adnan Saithna, *Liverpool*  
 Praveen Sarda, *Gillingham*  
 Deepak Gubbi Shivarathre, *Liverpool*



### **United States**

Daniel Louis Aaron, *Pawtucket*  
 Ashish Anand, *Jackson*  
 Huston Davis Adkisson, *St Louis*

Keith Baldwin, *Philadelphia*  
 Adam Brufsky, *Pittsburgh*  
 Ali Bydon, *Baltimore*  
 Nicole J Chimera, *Amherst*  
 Ock K Chun, *Storrs*  
 Suresh Chinthakunta, *Collegeville*  
 Alan H Daniels, *Providence*  
 Nabanita S Datta, *Detroit*  
 Deanna C Dye, *Bozeman*  
 Scott Forsyth Dye, *San Francisco*  
 Clark Dickin, *Muncie*  
 Hossein Elgafy, *Toledo*  
 Brandon J Erickson, *Chicago*  
 Nathan Joseph Fanter, *Hines*  
 Ashraf S Gorgey, *Richmond*  
 Timothy August Hartshorn, *Manhattan Beach*  
 John E Herzenberg, *Baltimore*  
 Jake Paul Heiney, *Toledo*  
 Matthew C Hoch, *Norfolk*  
 Johanna Marie Hoch, *Norfolk*  
 Mozammil Hussain, *Chesterfield*  
 Pier Francesco Indelli, *Albuquerque*  
 Michael Joseph, *Storrs*  
 Srinath Kamineni, *Lexington*  
 Eldin E Karaikovic, *Evanston*  
 Jeffrey Bruce Knox, *Honolulu*  
 Fatih Kucukdurmaz, *Philadelphia*  
 Kevin Laudner, *Normal*  
 KH Lee, *Rockville*  
 Bingyun Li, *Morgantown*  
 Xinning Li, *Boston*  
 Zong-Ming Li, *Cleveland*  
 Randall Loder, *Indianapolis*  
 Mark Kevan Lyons, *Phoenix*  
 Eleftherios A Makris, *Davis*  
 Aditya Vikram Maheshwari, *Brooklyn*  
 Paul David Metzger, *North Chicago*  
 Subburaman Mohan, *Loma Linda*  
 Arash Momeni, *Palo Alto*  
 Freeman Miller, *Wilmington*  
 Rahul Kumar Nath, *Houston*  
 Ripul R Panchal, *Sacramento*  
 Vinod Panchbhavi, *Galveston*  
 Nikolaos K Paschos, *Davis*  
 Ming Pei, *Morgantown*  
 Shannon MBravo Petersen, *Des Moines*  
 Matthew Robert Schmitz, *Fort San Houston*  
 Bruce M Rothschild, *Indiana*  
 Ran Schwarzkopf, *Orange*  
 Jason Scott Scibek, *Pittsburgh*  
 Shahin E Sheibani-Rad, *Los Angeles*  
 Manish K Sethi, *Nashville*  
 Vani Sabesan, *Dearborn*  
 Kern Singh, *Chicago*  
 William D Smith, *Las Vegas*  
 Ettore Vulcano, *Baltimore*  
 Ying-Chih Wang, *Milwaukee*  
 Joshua T Weinhandl, *Norfolk*  
 Charalampos Zalavras, *Los Angeles*  
 Chunfeng Zhao, *Rochester*  
 Nigel Zheng, *Charlotte*



### EDITORIAL

- 409 Economic factors in the future delivery of spinal healthcare  
*Rossi VJ, Ahn J, Bohl DD, Tabaraee E, Singh K*
- 413 Importance of balance and profile in adult spinal reconstruction  
*Teli MGA*
- 416 Placebo effect in osteoarthritis: Why not use it to our advantage?  
*de Campos GC*

### REVIEW

- 421 Effect of bone loss in anterior shoulder instability  
*Garcia GH, Liu JN, Dines DM, Dines JS*

### MINIREVIEWS

- 434 Neuromuscular control and rehabilitation of the unstable ankle  
*Hung Y*

### ORIGINAL ARTICLE

#### Retrospective Cohort Study

- 439 Variability of platelet aggregation in patients with clopidogrel treatment and hip fracture: A retrospective case-control study on 112 patients  
*Clareus A, Fredriksson I, Wallén H, Gordon M, Stark A, Sköldenberg O*

## Contents

*World Journal of Orthopedics*  
Volume 6 Number 5 June 18, 2015

### ABOUT COVER

Editorial Board Member of *World Journal of Orthopedics*, Gustavo Constantino de Campos, PhD, Surgeon, Department of Orthopedics and Traumatology, Knee Surgery Group, University of Campinas (UNICAMP), General Hospital, Campinas 13083-888, Brazil

### AIM AND SCOPE

*World Journal of Orthopedics* (*World J Orthop*, *WJO*, online ISSN 2218-5836, DOI: 10.5312) is a peer-reviewed open access academic journal that aims to guide clinical practice and improve diagnostic and therapeutic skills of clinicians.

*WJO* covers topics concerning arthroscopy, evidence-based medicine, epidemiology, nursing, sports medicine, therapy of bone and spinal diseases, bone trauma, osteoarthritis, bone tumors and osteoporosis, minimally invasive therapy, diagnostic imaging. Priority publication will be given to articles concerning diagnosis and treatment of orthopedic diseases. The following aspects are covered: Clinical diagnosis, laboratory diagnosis, differential diagnosis, imaging tests, pathological diagnosis, molecular biological diagnosis, immunological diagnosis, genetic diagnosis, functional diagnostics, and physical diagnosis; and comprehensive therapy, drug therapy, surgical therapy, interventional treatment, minimally invasive therapy, and robot-assisted therapy.

We encourage authors to submit their manuscripts to *WJO*. We will give priority to manuscripts that are supported by major national and international foundations and those that are of great basic and clinical significance.

### INDEXING/ABSTRACTING

*World Journal of Orthopedics* is now indexed in PubMed Central, PubMed, Digital Object Identifier, and Directory of Open Access Journals.

### FLYLEAF

#### I-III Editorial Board

### EDITORS FOR THIS ISSUE

Responsible Assistant Editor: *Xiang Li*  
Responsible Electronic Editor: *Dan-Ni Zhang*  
Proofing Editor-in-Chief: *Lian-Sheng Ma*

Responsible Science Editor: *Fang-Fang Ji*  
Proofing Editorial Office Director: *Xiu-Xia Song*

NAME OF JOURNAL  
*World Journal of Orthopedics*

ISSN  
ISSN 2218-5836 (online)

LAUNCH DATE  
November 18, 2010

FREQUENCY  
Monthly

EDITORS-IN-CHIEF  
**Quanjun (Trey) Cui, MD, Professor**, Department of Orthopaedic Surgery, School of Medicine, University of Virginia, Charlottesville, VA 22908, United States  
**Bao-Gan Peng, MD, PhD, Professor**, Department of Spinal Surgery, General Hospital of Armed Police Force, 69 Yongding Road, Beijing 100039, China

EDITORIAL OFFICE  
Jin-Lei Wang, Director

Xiu-Xia Song, Vice Director  
*World Journal of Orthopedics*  
Room 903, Building D, Ocean International Center,  
No. 62 Dongsihuan Zhonglu, Chaoyang District,  
Beijing 100025, China  
Telephone: +86-10-59080039  
Fax: +86-10-85381893  
E-mail: [editorialoffice@wjnet.com](mailto:editorialoffice@wjnet.com)  
Help Desk: <http://www.wjnet.com/esps/helpdesk.aspx>  
<http://www.wjnet.com>

PUBLISHER  
Baishideng Publishing Group Inc  
8226 Regency Drive,  
Pleasanton, CA 94588, USA  
Telephone: +1-925-223-8243  
Fax: +1-925-223-8243  
E-mail: [bpgoffice@wjnet.com](mailto:bpgoffice@wjnet.com)  
Help Desk: <http://www.wjnet.com/esps/helpdesk.aspx>  
<http://www.wjnet.com>

PUBLICATION DATE  
June 18, 2015

#### COPYRIGHT

© 2015 Baishideng Publishing Group Inc. Articles published by this Open-Access journal are distributed under the terms of the Creative Commons Attribution Non-commercial License, which permits use, distribution, and reproduction in any medium, provided the original work is properly cited, the use is non commercial and is otherwise in compliance with the license.

#### SPECIAL STATEMENT

All articles published in journals owned by the Baishideng Publishing Group (BPG) represent the views and opinions of their authors, and not the views, opinions or policies of the BPG, except where otherwise explicitly indicated.

#### INSTRUCTIONS TO AUTHORS

Full instructions are available online at [http://www.wjnet.com/2218-5836/g\\_info\\_20100722172650.htm](http://www.wjnet.com/2218-5836/g_info_20100722172650.htm)

#### ONLINE SUBMISSION

<http://www.wjnet.com/esps/>

## Economic factors in the future delivery of spinal healthcare

Vincent J Rossi, Junyoung Ahn, Daniel D Bohl, Ehsan Tabaraee, Kern Singh

Vincent J Rossi, Junyoung Ahn, Daniel D Bohl, Ehsan Tabaraee, Kern Singh, Department of Orthopaedic Surgery, Rush University Medical Center, Chicago, IL 60612, United States

**Author contributions:** All authors made significant contributions toward the preparation of this manuscript.

**Conflict-of-interest:** Author Kern Singh has received fees for serving as a consultant for DePuy, Zimmer, Stryker and Globus, royalties from Zimmer, Stryker, Pioneer, Lippincott, Thieme, Jaypee Publishing, and Slack Publishing, and as a board member for Vital 5 LLC, TruVue Surgical, Avaz, and Bijali. The other authors have nothing to disclose.

**Open-Access:** This article is an open-access article which was selected by an in-house editor and fully peer-reviewed by external reviewers. It is distributed in accordance with the Creative Commons Attribution Non Commercial (CC BY-NC 4.0) license, which permits others to distribute, remix, adapt, build upon this work non-commercially, and license their derivative works on different terms, provided the original work is properly cited and the use is non-commercial. See: <http://creativecommons.org/licenses/by-nc/4.0/>

**Correspondence to:** Kern Singh, MD, Associate Professor, Department of Orthopaedic Surgery, Rush University Medical Center, 1611 W. Harrison St., Suite #300, Chicago, IL 60612, United States. [kern.singh@rushortho.com](mailto:kern.singh@rushortho.com)

Telephone: +1-312-4322373

Fax: +1-708-4925373

Received: March 6, 2015

Peer-review started: March 8, 2015

First decision: April 10, 2015

Revised: April 22, 2015

Accepted: May 7, 2015

Article in press: May 8, 2015

Published online: June 18, 2015

popularity as a potential alternative to the current fee-for-service system. In the newer model, the spinal surgeon will become increasingly responsible for controlling costs. The bundled payment system will initially offer financial incentives to initiate a meaningful national transition from the fee-for-service model. The difficulty will be ensuring that the services of surgeons continue to be valued past this initiation period. However, greater financial responsibilities will be placed upon the individual surgeon in this new system. Over time, the evolving interests of hospital systems could result in the devaluation of the surgeons' services. Significant cooperation on behalf of all involved healthcare providers will be necessary to ensure that quality of care does not suffer while efforts for cost containment continue.

**Key words:** Affordable care act; Spine surgery; Economics; Future; Access; Payments; Reimbursement

© The Author(s) 2015. Published by Baishideng Publishing Group Inc. All rights reserved.

**Core tip:** Following the enactment and implementation of the patient protection and affordable care act, healthcare providers will witness significant changes in how payments are made for their services. In this editorial, the authors describe the potential benefits and the risks associated with a transition toward the bundled reimbursement system for patients and spine surgeons alike.

Rossi VJ, Ahn J, Bohl DD, Tabaraee E, Singh K. Economic factors in the future delivery of spinal healthcare. *World J Orthop* 2015; 6(5): 409-412 Available from: URL: <http://www.wjgnet.com/2218-5836/full/v6/i5/409.htm> DOI: <http://dx.doi.org/10.5312/wjo.v6.i5.409>

### Abstract

The current trajectory of healthcare-related spending in the United States is unsustainable. Currently, the predominant form of reimbursement is the form of a fee-for-service system in which surgeons are reimbursed for each discrete unit of care provided. This system does factor the cost, quality, or outcomes of service provided. For the purposes of cost containment, the bundled episode reimbursement has gained

### EDITORIAL

During 2013, healthcare-related spending in the

United States grew by 3.6% accounting for \$2.7 trillion dollars and 17.3% of the gross domestic product (GDP)<sup>[1]</sup>. It is widely accepted that the current trajectory of healthcare-related spending in the United States is unsustainable. However, less agreement exists regarding the optimal approach to improve its sustainability. The current fee-for-service payment system is cited as a potential source of escalating healthcare costs and wasteful spending<sup>[2,3]</sup>. The Patient Protection and Affordable Care Act (2010) attempts to address this issue while improving the quality and access<sup>[4]</sup>. Through provisions outlined in the law, direct endorsement by the president<sup>[5]</sup>, and several demonstration projects<sup>[6,7]</sup>, the bundled episode payment system has gained popularity as a means to contain healthcare-related costs.

There is a spectrum of potential financial models for health care reimbursement. At one extreme is the fee-for-service model, which is currently the predominant model in the United States. This model limits the financial risk for providers. Healthcare providers are reimbursed for each discrete component of care that they provide, regardless of cost, quality, or outcome. On the opposite end of the spectrum is the concept of global payments. This is a capitation model in which a single amount is allocated for each episode of care independent of the extent of health-related needs. This model exposes providers to a substantial amount of financial risk in which the spine surgeon could be paid incrementally less depending on the utilization of resources.

The concept of bundled episode payments exists on a financial spectrum between the fee-for-service and global payment systems. In the bundled episode payment model, reimbursements occur for an entire episode of care. This model is most applicable to procedures in which a predetermined reimbursement could potentially be disbursed for the care episode and for any ancillary services provided over a predetermined time period. In this model, a single payment is given to providers to divide among services and materials. This single payment is intended to cover physician fees, operating costs, the inpatient stay, physical therapy following discharge, and any costs associated with complications or readmissions to the hospital.

Reimbursement per care episode has been an entity in the healthcare system since the implementation of Medicare's diagnosis related groups (DRGs)<sup>[8]</sup>. In this system, reimbursements are based upon admissions for specific diagnoses, such as congestive heart failure or diabetes. In addition, the model of a lump sum bundled payment for care has been present in Health Maintenance Organizations (HMO) for decades. However, "bundling" payments for a given procedure and all care received within a specific time period is a relatively new model that has gained significant traction in recent healthcare reform discussions.

The strongest theoretical advantage of the bundled payments is cost containment. The incentives of all providers are aligned to reduce costs in order to share in the potential savings. This reduces the incentive for wasteful use of medical resources, especially those that may not significantly improve patient care. Bundled payments place greater incentive for providers to control avoidable and costly complications during the postoperative period.

Critics would point out that a disadvantage of the bundled payment system is that hospitals and providers will unfairly select healthier patients or adjust indications of procedures in order to maximize profit. In addition, there are concerns that in an attempt to reduce costs, surgeons may favor cheaper, less technically complex procedures in replacement of more costly procedures that have demonstrated superior outcomes<sup>[9]</sup>.

At this time, there is significant momentum to establish bundled payments as the primary means of reimbursement, particularly for elective procedures with well-defined outcomes and consistent involvement of particular ancillary services. This is especially attractive for common, elective orthopedic and spine procedures. Many institutions anticipate moving to this reimbursement method. As such, much effort is being placed on research regarding the cost and financial variability that occurs within them<sup>[10]</sup>.

The financial implications of bundled payments for surgeons are significant. For example, surgeons would clearly take on greater financial risk. Such risk has two components. The first is probability risk, which refers to random events that occur as a result of uncontrollable external and genetic factors related to the patient<sup>[10]</sup>. The second is technical risk, which refers to risk that is a direct consequence of the intervention and care during the episode<sup>[10]</sup>. These risks include postoperative complications, urinary tract infections, and readmissions. In an ideal system, any penalties to providers should relate to technical risk; however, the distinction between technical risk and probability risk is not always defined. For instance, the impact of factors such as patient non-adherence to medical and therapeutic regimens, preoperative illness severity, and poor patient lifestyle choices is hard to dichotomize clearly into either of the two classifications. The providers will inevitably take on at least a proportion of this risk as it is not only difficult to clearly define them, but would be administratively unfeasible to do so.

The increased financial risk undertaken by surgeons will need to be offset with the potential for larger financial gains. In order to protect providers, a proper risk corridor must be established. A risk corridor limits the profits and losses above or below a given percentage from the net neutral position<sup>[11]</sup>. By defining the range of profits and losses, surgeons are protected from catastrophic financial losses while any



exuberant gains are limited.

In the context of the increasing demand for cost control in spine surgery, recent trends have emerged. One such trend is the movement towards performing surgery in ambulatory surgery centers (ASC). ASCs aim to avoid the expensive costs of hospitalization, which have historically been one of the largest contributors to the total cost of a care episode<sup>[12]</sup>. The shift towards ASCs increases the predictability of the related costs while reducing the potential of developing costly complications during a hospital admission. With recent advances in outpatient anesthesia and pain management protocols, avoiding hospitalization following spine surgery is becoming increasingly feasible for selected procedures. However, potential complications of spine surgery will require this paradigm shift to proceed cautiously as to not compromise patient care solely based upon the idea of cost containment.

In addition, criticism regarding the use of implants and biologics may increase as their utilization have been the source of increasing costs<sup>[7]</sup>. There will be more discretion regarding the use of newer, more costly designs that may only benefit marginally over traditional options. Procedures such as a simple decompression for stable degenerative conditions may also gain popularity in place of a more costly fusion procedure if the reimbursements within the bundled payment for both types of procedures are comparable.

The specifics of when the changes to the healthcare system will occur and how they will impact surgeons' practices remain unclear. However, the fact that the healthcare system is changing has never been more certain. All surgeons should anticipate these changes and be active participants in the discussion in order to properly advocate what is best for their patients and their respective specialties. The shift in payment systems should be a beckoning call for surgeons to unite their interests in order to clearly establish the value of their services to the hospital and the society at-large.

The bundled payments system could shift the physician fees and salaries onto the institution. In an effort to better predict costs, hospitals will come under pressure to hire salaried surgeons. In such a system, hospital administrators will determine the salary of the surgeon. This may ultimately appraise the value of the surgeons' services within the episode of care. As such, reimbursement to physicians will be strongly correlated with the price at which the hospital is reimbursed for the bundled care episode. As the financial uncertainty of the national health care system continues, decreasing bundle prices will be an appealing way to cut costs on national health spending. This cost cutting measure may prompt administrators to react by reducing payments to surgeons, especially once costs related to postoperative care have reached economies of scale in which additional incremental savings may no longer be attainable.

In conclusion, surgeons have the potential to gain financially in the short-term by participating in the bundled payment system. This system will initially require tempting financial incentives in order for the country to initiate a meaningful national transition from fee-for-service. The difficulty will be insuring that the services of surgeons continue to be valued past this undetermined period. It appears possible that greater financial risk burden will be placed upon the individual surgeon in this new system. Over time, physicians may be placed in increasingly vulnerable positions in which the desires of the hospital systems result in devaluing of the services provided by the surgeon. Significant cooperation on behalf of all involved healthcare providers will be necessary to ensure that quality of care does not suffer while efforts for cost containment continue.

## REFERENCES

- 1 **Center for Medicare and Medicaid Services.** Available from: URL: <http://www.cms.gov/Research-Statistics-Data-and-Systems/Statistics-Trends-and-Reports/NationalHealthExpendData/NHE-Fact-Sheet.html>
- 2 **Ikegami N.** Fee-for-service payment - an evil practice that must be stamped out? *Int J Health Policy Manag* 2015; **4**: 57-59 [PMID: 25674568 DOI: 10.15171/ijhpm.2015.26]
- 3 **World Health Organization.** Health Systems Financing: The Path to Universal Coverage. Geneva, Switzerland, 2010. Available from: URL: [http://www.who.int/health\\_financing/Health\\_Systems\\_Financing\\_Plan\\_Action.pdf](http://www.who.int/health_financing/Health_Systems_Financing_Plan_Action.pdf)
- 4 Patient Protection and Affordable Care Act, 119. U.S. Government Printing Office, 2010. Available from: URL: <http://www.gpo.gov/fdsys/granule/STATUTE-124/STATUTE-124-Pg119/content-detail.html>
- 5 **Obama PB.** Remarks by the President at the Annual Conference of the American Medical Association. The White House, 2009. Available from: URL: <https://www.whitehouse.gov/the-press-office/remarks-president-annual-conference-american-medical-association>
- 6 **Cromwell J, Dayhoff DA, McCall NT, Subramanian S, Freitas RC, Hart RJ, Caswell C, Stason M.** Medicare Participating Heart Bypass Center Demonstration. U.S. Health Care Financing Administration, 1998. Available from: URL: [http://www.cms.gov/Research-Statistics-Data-and-Systems/Statistics-Trends-and-Reports/Reports/downloads/oregon2\\_1998\\_3.pdf](http://www.cms.gov/Research-Statistics-Data-and-Systems/Statistics-Trends-and-Reports/Reports/downloads/oregon2_1998_3.pdf)
- 7 **Epstein NE.** Iliac crest autograft versus alternative constructs for anterior cervical spine surgery: Pros, cons, and costs. *Surg Neurol Int* 2012; **3**: S143-S156 [PMID: 22905321 DOI: 10.4103/2152-7806.98575]
- 8 **Mayes R, Berenson RA.** Medicare prospective payment and the shaping of US health care. Baltimore (MD): Johns Hopkins University Press, 2006. Available from: URL: <http://muse.jhu.edu/books/9780801888878>
- 9 **Calsyn M, Emanuel EJ.** Controlling costs by expanding the medicare acute care episode demonstration. *JAMA Intern Med* 2014; **174**: 1438-1439 [PMID: 25004083 DOI: 10.1001/jamainternmed.2014.2981]
- 10 **Hussey PS, Ridgely MS, Rosenthal MB.** The PROMETHEUS bundled payment experiment: slow start shows problems in implementing new payment models. *Health Aff (Millwood)* 2011; **30**: 2116-2124 [PMID: 22068404 DOI: 10.1377/hlthaff.2011.0784]
- 11 **de Brantes F.** Payment Reform: Bundled Episodes vs Global Payments A debate between Francois de Brantes and Robert Berenson. The Urban Institute, 2012. Available from: URL: <http://www.urban.org/research/publication/payment-reform-bundled->

episodes-vs-global-payments

- 12 **Ugiliweneza B**, Kong M, Nosova K, Huang KT, Babu R, Lad SP, Boakye M. Spinal surgery: variations in health care costs and

implications for episode-based bundled payments. *Spine (Phila Pa 1976)* 2014; **39**: 1235-1242 [PMID: 24831503 DOI: 10.1097/BRS.0000000000000378]

**P- Reviewer:** de Campos GC, Tomaszewska A **S- Editor:** Ji FF  
**L- Editor:** A **E- Editor:** Zhang DN



## Importance of balance and profile in adult spinal reconstruction

Marco GA Teli

Marco GA Teli, Department of Orthopaedic Surgery, Civile Regional Hospital, 20025 Legnano (Mi), Italy

Author contributions: Teli MGA designed and wrote the review.

Conflict-of-interest: Marco GA Teli has received fees for serving as a speaker for Alphatec Spine, Biomet Spine and Medtronic.

Open-Access: This article is an open-access article which was selected by an in-house editor and fully peer-reviewed by external reviewers. It is distributed in accordance with the Creative Commons Attribution Non Commercial (CC BY-NC 4.0) license, which permits others to distribute, remix, adapt, build upon this work non-commercially, and license their derivative works on different terms, provided the original work is properly cited and the use is non-commercial. See: <http://creativecommons.org/licenses/by-nc/4.0/>

Correspondence to: Marco GA Teli, MD, Department of Orthopaedic Surgery, Civile Regional Hospital, via Papa Giovanni Paolo II, 20025 Legnano (Mi), Italy. [marcoteli@hotmail.com](mailto:marcoteli@hotmail.com)

Telephone: +39-331-449828

Fax: +39-331-449593

Received: February 2, 2015

Peer-review started: February 3, 2015

First decision: April 10, 2015

Revised: May 4, 2015

Accepted: May 5, 2015

Article in press: May 6, 2015

Published online: June 18, 2015

**Key words:** Sagittal balance; Sagittal profile; Adult spinal deformity; Anterior fusion; Posterior fusion

© **The Author(s) 2015.** Published by Baishideng Publishing Group Inc. All rights reserved.

**Core tip:** Adult spinal reconstruction is set to become the emerging trend in the next years in spinal surgery. Failure of restoration of adequate spinal balance and profile in the sagittal plane is now recognised as the single most important factor determining inadequate improvement in quality of life in adult patients undergoing reconstructive surgery for spinal deformity.

Teli MGA. Importance of balance and profile in adult spinal reconstruction. *World J Orthop* 2015; 6(5): 413-415 Available from: URL: <http://www.wjgnet.com/2218-5836/full/v6/i5/413.htm> DOI: <http://dx.doi.org/10.5312/wjo.v6.i5.413>

## INTRODUCTION

Twenty years ago the concepts of pelvic tilt and incidence were scholar work for researchers who did not seem to have a solid grip on clinical matters<sup>[1]</sup>. Time, though, brings clarity to scientific matters. It became progressively apparent and accepted that patients undergoing fusion for degenerative deformities did not do well when their sagittal rather than coronal balance was less than restored<sup>[2]</sup>. Alleged reasons for these failures included natural history<sup>[3]</sup>, junctional degeneration<sup>[4]</sup> and bone-implant interface failure<sup>[5]</sup> to name a few. It was only when surgeons started to learn the rules of spino-pelvic parameters and to apply them to patients that reports on adult spinal deformity surgery changed their grim faces into a more optimistic appearance<sup>[6]</sup>.

The spinal community is set to be invaded by

## Abstract

Long before its current understanding, the concept of balance was common among spine surgeons dealing with deformities, but it was a hard one to transfer to clinical practice. Thanks to the pioneering work of Duval-Beaupere and followers, the idea of balancing the sagittal contour of the spine has gained scientific status and is now in the armamentarium of the skilled surgeon as the single most important tool to achieve superior clinical results in adult spinal deformity surgery.

ageing patients who demand increasing performances as their life expectancy and, sadly, the prevalence of their acquired deformities both increase. While the current scenario is dominated by the obsessive research of balance through the use of spinal osteotomies<sup>[7]</sup>, the next will see the research of lesser invasive methods of anterior and posterior reconstruction that would not be at the expense of obtaining a solid and lasting fusion<sup>[8]</sup>. Open questions are issues about costs and complications of this most complex aspect of clinical medicine<sup>[9-11]</sup>. Aim of this paper is to set the scene of current and future trends in adult spinal deformity (ASD) surgery by analysing the potentially most important recently published papers on the subject.

We analysed English edited papers on ASD surgery through PubMed in the years 2000-2014 with attention to parameters that closely related to surgical outcomes<sup>[2-9]</sup>. Eleven papers were included in the analysis because of their clinical relevance to the subject<sup>[2-12]</sup>. All of them are retrospective case series or reviews limiting the value of their evidence to lower levels. Nevertheless, they represent the current golden standard of practice and the basis for future trends.

Criteria to include these papers in the analysis included: (1) Minimum follow-up of one year; (2) Objective quality of life measurements performed preoperatively and at follow-up; (3) Description and rating of complications into major and minor ones; (4) Description of type and site of osteotomies; and (5) Description of preoperative and follow-up sagittal spino-pelvic measurements.

Despite the variability of inclusion criteria on age, comorbidities, severity of deformities and surgical techniques, the one issue that becomes apparent from the analysis of this literature is the obsessive description of spino-pelvic parameters as the most important feature correlating with clinical results.

The methods to achieve postoperative balance which are described in the papers include posterior wedge (chevron like or Ponte or Smith Petersen) osteotomies in case of non-rigid deformities with mobile discs; pedicle subtraction osteotomies and/or vertebral column resections in case of severe and rigid deformities and anterior or lateral interbody fusion techniques to improve the chance of a lasting correction of the deformity.

## DISCUSSION

The group of Duval-Beaupere were the first to conceive the importance of pelvic parameters in the sagittal profile of the spine<sup>[1]</sup>. Before this paper gained widespread acceptance, most surgeons dealing with adults as well as paediatric deformities only concentrated on the coronal profile of the spine as a marker of their efforts. This is just one of the many possible examples of how tradition and lack of evidence may impair the practice of medicine.

Fortunately, the translation of this pioneering work into practical guidelines led to increasingly common reports on how the sagittal profile impacts on daily living of affected patients, and this trend does not seem to stop on either sides of the Atlantic Ocean<sup>[2,3,9]</sup>.

Many are the parameters of spinal balance described so forth<sup>[4]</sup>, but three deserve particular attention, *i.e.*, Pelvic Incidence (PI), Pelvic Tilt (PT) and Sacral Slope (SS).

PI represents the width of the pelvis as seen on a lateral radiological view. PI is a fixed parameter for every person at the end of skeletal growth and determines the possibility of the spine to accommodate for degenerative changes that occur with ageing. PT represents the possibility of the pelvis to rotate on the femoral heads to accommodate for these changes. During backwards rotation, the PT increases and this movement is known as pelvic retroversion, while the opposite rotation is known as anteversion. Both retro and anteversion influence the SS, *i.e.*, the inclination of the sacrum in relation with the ground. PI, PT and SS are in mutual relationship according to the following equation:  $PI = SS + PT$ .

For instance, a PI higher than the average 52° predisposes to degenerative spondylolisthesis while a lower PI may lead to early degenerative disc disease and disc herniation (for full explanation of these features please refer to the paper by Rossouly and Nnadi<sup>[4]</sup>). On a practical ground, one of the lessons to be learned is that fusion of the lumbar spine should aim at a value of Lumbar Lordosis (LL) at least equivalent to that of PI or within 9 degrees of it<sup>[2,4]</sup>. Another important concept is that balance and profile should never be confused. A balanced spine is one that keeps its equilibrium without undue muscular efforts, pain or deformity, irrespective of its profile.

In fact, the sagittal profile of healthy adult volunteers has been studied and sub-classified into four types according to the level of the inflection point between the thoracic and the lumbar tracts of the spine<sup>[4]</sup>. These four types are rather simple keep in mind and should be used as a reference template in planning osteotomies and correction of ASD, in order to respect the original shape, *i.e.*, profile, of the individual spine<sup>[3,4]</sup>. In a simplistic way, the last important concept is that 70% of all lumbar lordosis, irrespective of the spinal profile, is concentrated between L4 and S1. As these levels are the ones that are most commonly addressed by surgical reconstruction, failure to recognise and restore any loss of lordosis would inevitably lead to spinal imbalance and trigger compensation with aging<sup>[3]</sup>.

Means to achieve the above goals are without any doubt advanced imaging techniques like EOS, a revolutionary tool using slot scanning low emission X ray bidimensional representations of the deformed spine and of the relative spinopelvic parameters<sup>[10]</sup>. EOS is able to record simultaneously postero-anterior and lateral X ray images allowing for tridimensional



reconstruction if desired. Another important feature is the ability of EOS to acquire full length bodily images, avoiding the need to stitch multiple images as needed in traditional X ray pictures. The quality of EOS pictures is similar to digital radiography and in tridimensional reconstructions it allows multiplanar views of the deformed spine (as well as of the appendicular skeleton if needed). EOS will become more widely available in time but is nowadays an expensive tool that many centers cannot afford. Nevertheless, even in the absence of EOS surgeons should make every effort to obtain high quality full spine standing AP and lateral X-rays including the hips and 10 cm of the femurs along with flexed elbows in order to study the proximal thoracic tract. Once adequate imaging is obtained, the planning of corrective osteotomies can take place. Accepted techniques are wedge, pedicular and vertebral column resection osteotomies. These are all performed by a posterior approach and rely on solid pedicle instrumentation - two to three levels above and below - to obtain immediate corrective power, unfortunately at the expense of significant morbidity<sup>[5,11]</sup>. Major complications including death, permanent paralysis, pseudoarthrosis, proximal junctional failure and infection may affect up to 60% of treated patients and are largely dependent on age, degree of sagittal imbalance and medical comorbidities at the current state of knowledge<sup>[3-6,11]</sup>. In addition, there seems to be wide variability in revision rates among centers treating different volumes of patients<sup>[12]</sup>. Hence, the role of minimally invasive anterior (and posterior) support in ASD surgery is increasingly reported<sup>[7,8]</sup> and its efficacy awaits the test of time.

## REFERENCES

- 1 **Legaye J**, Duval-Beaupère G, Hecquet J, Marty C. Pelvic incidence: a fundamental pelvic parameter for three-dimensional regulation of spinal sagittal curves. *Eur Spine J* 1998; **7**: 99-103 [PMID: 9629932 DOI: 10.1007/S005860050038]
- 2 **Glassman SD**, Bridwell K, Dimar JR, Horton W, Berven S, Schwab F. The impact of positive sagittal balance in adult spinal deformity. *Spine (Phila Pa 1976)* 2005; **30**: 2024-2029 [PMID: 16166889 DOI: 10.1097/01.brs.0000179086.30449.96]
- 3 **Le Huec JC**, Faundez A, Dominguez D, Hoffmeyer P, Aunoble S. Evidence showing the relationship between sagittal balance and clinical outcomes in surgical treatment of degenerative spinal diseases: a literature review. *Int Orthop* 2015; **39**: 87-95 [PMID: 25192690 DOI: 10.1007/s00264-014-2516-6]
- 4 **Roussouly P**, Nnadi C. Sagittal plane deformity: an overview of interpretation and management. *Eur Spine J* 2010; **19**: 1824-1836 [PMID: 20567858 DOI: 10.1007/S00586-010-1476-9]
- 5 **Bhagat S**, Vozar V, Lutchman L, Crawford RJ, Rai AS. Morbidity and mortality in adult spinal deformity surgery: Norwich Spinal Unit experience. *Eur Spine J* 2013; **22** Suppl 1: S42-S46 [PMID: 23288452 DOI: 10.1007/s00586-012-2627-y]
- 6 **Silvestre C**, Mac-Thiong JM, Hilmi R, Roussouly P. Complications and Morbidities of Mini-open Anterior Retroperitoneal Lumbar Interbody Fusion: Oblique Lumbar Interbody Fusion in 179 Patients. *Asian Spine J* 2012; **6**: 89-97 [PMID: 22708012 DOI: 10.4184/asj.2012.6.2.89]
- 7 **Bach K**, Ahmadian A, Deukmedjian A, Uribe JS. Minimally invasive surgical techniques in adult degenerative spinal deformity: a systematic review. *Clin Orthop Relat Res* 2014; **472**: 1749-1761 [PMID: 24488750 DOI: 10.1007/s11999-013-3441-5]
- 8 **Costanzo G**, Zoccali C, Maykowski P, Walter CM, Skoch J, Baaj AA. The role of minimally invasive lateral lumbar interbody fusion in sagittal balance correction and spinal deformity. *Eur Spine J* 2014; **23** Suppl 6: 699-704 [PMID: 25217242 DOI: 10.1007/s00586-014-3561-y]
- 9 **Pellisé F**, Vila-Casademunt A, Ferrer M, Domingo-Sabat M, Bagó J, Pérez-Grueso FJ, Alanay A, Mannion AF, Acaroglu E. Impact on health related quality of life of adult spinal deformity (ASD) compared with other chronic conditions. *Eur Spine J* 2015; **24**: 3-11 [PMID: 25218732 DOI: 10.1007/s00586-014-3542-1]
- 10 **Le Huec JC**, Demezon H, Aunoble S. Sagittal parameters of global cervical balance using EOS imaging: normative values from a prospective cohort of asymptomatic volunteers. *Eur Spine J* 2015; **24**: 63-71 [PMID: 25344642 DOI: 10.1007/s00586-014-3632-0]
- 11 **Schwab FJ**, Hawkinson N, Lafage V, Smith JS, Hart R, Mundis G, Burton DC, Line B, Akbarnia B, Boachie-Adjei O, Hostin R, Shaffrey CI, Arlet V, Wood K, Gupta M, Bess S, Mummaneni PV. Risk factors for major peri-operative complications in adult spinal deformity surgery: a multi-center review of 953 consecutive patients. *Eur Spine J* 2012; **21**: 2603-2610 [PMID: 22592883 DOI: 10.1007/s00586-012-2370-4]
- 12 **Maier S**, Smith JS, Schwab F, Obeid I, Mundis G, Klineberg E, Hostin R, Hart R, Burton D, Boachie-Adjei O, Gupta M, Ames C, Protosaltis T, Lafage V, International Spine Study Group. Revision Surgery After Three-Column Osteotomy in 335 Adult Spinal Deformity Patients: Inter-Center Variability and Risk Factors. *Spine (Phila Pa 1976)* 2014; Epub ahead of print [PMID: 24583729 DOI: 10.1097/BRS.0000000000000304]

**P- Reviewer:** Aota Y, Kindy MS, Kahveci R **S- Editor:** Ji FF

**L- Editor:** A **E- Editor:** Zhang DN



## Placebo effect in osteoarthritis: Why not use it to our advantage?

Gustavo C de Campos

Gustavo C de Campos, Department of Orthopedic Surgery, Faculty of Medical Sciences, University of Campinas, Campinas, São Paulo 13087-000, Brazil

**Author contributions:** de Campos GC solely contributed to this manuscript.

**Conflict-of-interest:** Gustavo C de Campos has received fees for serving as a speaker and as a consultant for Sanofi-Aventis and PharmaNostra.

**Open-Access:** This article is an open-access article which was selected by an in-house editor and fully peer-reviewed by external reviewers. It is distributed in accordance with the Creative Commons Attribution Non Commercial (CC BY-NC 4.0) license, which permits others to distribute, remix, adapt, build upon this work non-commercially, and license their derivative works on different terms, provided the original work is properly cited and the use is non-commercial. See: <http://creativecommons.org/licenses/by-nc/4.0/>

**Correspondence to:** Gustavo C de Campos, MD, PhD, Department of Orthopedic Surgery, Faculty of Medical Sciences, University of Campinas, PO Box 6111, Campinas, São Paulo 13087-000, Brazil. [gustavoccampos@usp.br](mailto:gustavoccampos@usp.br)

Telephone: +55-19-983318000

Received: February 6, 2015

Peer-review started: February 6, 2015

First decision: March 6, 2015

Revised: April 28, 2015

Accepted: May 5, 2015

Article in press: May 6, 2015

Published online: June 18, 2015

effective. The present article discusses the history of placebo effect and its scientific evidence, comments on ethical issues and provides insights about how it may be used to our advantage when treating osteoarthritic patients.

**Key words:** Osteoarthritis; Placebo; Treatment

© **The Author(s) 2015.** Published by Baishideng Publishing Group Inc. All rights reserved.

**Core tip:** Osteoarthritis is a major cause of pain and reduced quality of life in the elderly population, as well as an economic burden. Unfortunately, there is no currently effective treatment, and most of them show small to moderate effect sizes, according to main meta-analyses. On the other hand, literature has demonstrated that placebo has a considerable effect size in osteoarthritis clinical trials. So why not use it to our advantage?

de Campos GC. Placebo effect in osteoarthritis: Why not use it to our advantage? *World J Orthop* 2015; 6(5): 416-420 Available from: URL: <http://www.wjgnet.com/2218-5836/full/v6/i5/416.htm> DOI: <http://dx.doi.org/10.5312/wjo.v6.i5.416>

### Abstract

Osteoarthritis is a major cause of pain and reduced quality of life in the elderly, as well as a major economic burden. Unfortunately, there is no currently effective therapeutic strategy to prevent the progression of Osteoarthritis, and its treatment poses a great challenge to the medical community. Most of the treatment modalities currently available for osteoarthritis have small to moderate effect sizes, according to main meta-analyses and treatment guidelines. On the other hand, literature has demonstrated that placebo is considerably

### INTRODUCTION

Osteoarthritis (OA) is a major cause of pain and reduced quality of life in the elderly<sup>[1]</sup>. It is also an economic burden, associated with high direct and indirect health-related costs, as well loss of adjusted life years<sup>[2]</sup>. Unfortunately, there is no currently effective therapeutic strategy to prevent the progression of the disorder, and its treatment poses a great challenge to the medical community<sup>[3]</sup>.

Most of the treatment modalities currently available for OA have small to moderate effect sizes (ESs),

according to main meta-analyses and treatment guidelines<sup>[4-8]</sup>. An ES of 1 indicates that the mean at endpoint is 1 standard deviation below the mean at baseline<sup>[9]</sup>. In terms of symptomatic improvement, an ES around 0.2 implies a minor benefit, 0.5 indicates mild effect and 0.8 and higher indicates a major effect<sup>[9]</sup>.

A 2011 meta-analysis found only moderate benefits of self-management programs on measures of arthritis-related pain and disability<sup>[4]</sup>, with estimated ES for pain relief of 0.06 (0.02-0.10)<sup>[4]</sup>. Acupuncture (ES = 0.28)<sup>[5]</sup>, exercise (ES = 0.34)<sup>[6]</sup>, weight management (ES = 0.20)<sup>[10]</sup>, paracetamol (ES = 0.13)<sup>[11]</sup>, NSAIDs (ES = 0.37)<sup>[12]</sup> and viscosupplementation (ES = 0.37)<sup>[13]</sup> are another examples of recommended non-surgical treatments for OA, with small to moderate ESs. In light of the current complete lack of structure modifying treatments, there is a need to reassess the current paradigm.

In 2008, a systematic review to examine the placebo effect and its potential determinants in the treatment of OA has demonstrated that placebo is effective with considerable ES<sup>[14]</sup>. For pain relief the overall ES was 0.51 [95% confidence interval (CI): 0.46 to 0.55] for placebo, but nearly zero for patients who were in "no treatment" groups. Such large effect is certainly a surprising and impressive finding. So why not use it to our advantage?

## HISTORY OF PLACEBO

Placebo is the Latin word of "I will please". In the thirteenth century, hired mourners often repetitively chanted the 116 psalm "I will please the Lord". The term "placebos" became popular and referred to their fake behavior<sup>[15]</sup>. Until 1945, placebos were used by physicians as a "morally" useful but innocuous tool without ethical issues<sup>[16]</sup>. When paternalistic ethics prevailed, placebo was considered "The Humble Humbug", a means of reinforcing a patient's confidence in his recovery, to comfort patients with terminal conditions, "especially those low in intellect"<sup>[17,18]</sup>.

After World War II, the use of the double-blind randomized controlled trial (RCT) began to establish itself as the standard method for "rational therapeutics", and the placebo went through a dramatic transformation, imbued with powerful therapeutic effects that could mimic potent drugs<sup>[16]</sup>. This, along with effective drug discovery, brought concern about the ethics of its use. The modern concept of placebo was consolidated a few years later with Beecher's paper entitled "The Powerful Placebo"<sup>[19]</sup>. In this analysis, the author found evidence that placebos have an average high therapeutic effectiveness of 35%<sup>[19]</sup>. He also stated that "the total drug effect is equal to its active effect plus its placebo effect"<sup>[19]</sup>. From this moment, anything aside the predictable cause and

effect outcome was considered "placebo effect", or "placebo response", a new and much larger concept of placebo.

## PLACEBO RESPONSE

The placebo response can be defined as the symptomatic improvement provenient from a treatment or intervention that does not result from the substance or intervention itself, but is due to the therapeutic ritual, context, expectations or any other patient, caregiver or environmental factor involved in the treatment. It's a very complex and omnibus concept, previously defined by other authors as "symptomatic improvement on receiving any inert/non-therapeutic (placebo) intervention(s) compared to those who do not receive it"<sup>[20]</sup> or "a change in a patient's illness attributable to the symbolic import of a treatment rather than a specific pharmacologic or physiologic property"<sup>[21]</sup>. The former definition meets the classical placebo role in RCTs, but the latter acknowledges that it's rather impossible to separate the "placebo effect" from the real effect of a given drug or intervention. Furthermore, the placebo effect is built-in to any given treatment, even when no physical placebo is given.

## EVIDENCE OF PLACEBO RESPONSE

A 2004 update on a systematic review found only limited evidence of clinical effects as a consequence of placebos, pointing out that they had possible benefits only in studies with continuous subjective pain outcomes<sup>[22]</sup>. Nevertheless, literature on significant placebo response is abundant.

In a classic experiment, medical students were told they would receive tablets with sedative or stimulant effects. All of them received either one or two blue or pink pills. However, every pill was placebo. It was found that "two capsules produced more effects than one, and blue capsules were more sedative than the pink ones"<sup>[23]</sup>. Commercial variables also affect expectations and influences therapeutic efficacy. When patients were given a famous pain killer in a branded or unbranded form with either an inert or an active formulation, Aspirin was more effective than placebo, and branded tablets (both active and placebo) were more effective than their unbranded counterparts<sup>[24]</sup>. Another study found that patients who were told their pills were more expensive (USD\$2.50) had more symptomatic relief than those who were told their pills cost just 10 cents<sup>[25]</sup>.

The placebo response may also be observed by increasing expectations about an intervention. In a study of the University of Connecticut<sup>[26]</sup>, subjects were given decaffeinated coffee, with deceptive or double-blind instructions. One group was told they would receive regular coffee, and the other group was

told they would receive either regular or decaffeinated coffee. The first group had a greater increase in alertness, heart rate and blood pressure than the second group (and no one actually received caffeine!). Verbal suggestions can alter patient's expectations and lead to placebo effects. A patient can make use of a topical placebo cream with two different suggestions: that the cream is inert or that it is a powerful analgesic. The outcomes will surely be different<sup>[27]</sup>.

Knowing that a treatment is being administered, also known as open-hidden paradigm, is one of the most evident findings supporting placebo effect in clinical care. Patients who could see the medication being administered experienced greater symptom relief than when treatment was given in a hidden manner, *i.e.*, without the patient's knowledge. Interestingly, in this case, no actual placebo has been given<sup>[28]</sup>. Practitioner's expectations are also shown to influence patient outcomes as well. In a RCT on dental pain, patients could either receive fentanyl, naloxone or placebo. This time the investigators were the ones deceived. In the initial phase of the study they were told patients would only receive naloxone (to increase pain) or placebo. In a second phase investigators were told that a fentanyl group (for analgesia) was included. Placebo in the first group led to less improvement than in the second group, meaning that investigator pessimism about proportion of patients receiving correct therapy could have negatively influenced the outcome<sup>[18]</sup>.

## PLACEBO RESPONSE IN OA

The placebo response is best documented for pain and distress, two main targets in patients with OA<sup>[20]</sup>. In a systematic review involving 16364 patients that received placebo in OA, RCTs confirmed that placebo response occurs in OA. Moreover, the overall ES for pain relief was 0.51, a very substantial number and greater than most specific effect obtained from any other individual treatment for OA<sup>[14]</sup>. In a randomized controlled trial of acupuncture for OA, traditional Chinese acupuncture was found not to be superior to sham acupuncture. However, "acupuncturists' styles had significant effects on pain reduction and satisfaction, suggesting that the analgesic benefits of acupuncture can be partially mediated through placebo effects related to the acupuncturist's behavior"<sup>[29]</sup>. Telephone contact is shown to be a useful intervention that can enhance the functional status of OA patients by reducing pain and improving psychological health<sup>[30]</sup>. Although patients may actually receive useful treatment information by phone, the call itself surely exerts a powerful placebo effect.

The method of delivery is also very important. In general, the more invasive and the more frequently administered an intervention the higher the placebo

effect<sup>[14]</sup>. Bannuru *et al*<sup>[31]</sup> showed that some types of placebo interventions are associated with greater responses in patients with OA (intra-articular and topical placebo effects higher than oral). Thus, it is not surprising that sham arthroscopy of the knee has a very large placebo effect<sup>[32]</sup>. Even the way that practitioners interact with patient can be of influence. Contextual aspects, such as a warm, attentive, confident and optimistic consultation, as well as the patient's perception that the practitioner is competent and wishes to monitor his/her progress, may also positively influence the outcome. In a study by Thomas<sup>[33]</sup>, all patients received thiamine tablets as placebo medication. A "positive" consultation, with confident diagnosis and reassuring attitude produced better outcomes than a "negative" consultation.

## FINAL CONSIDERATIONS

Since the second half of the 20<sup>th</sup> century, the use of placebo has been loathed and, apart from the common use as a control in RCTs, it is sometimes used with negative purposes, like to determine if a patient is faking its symptoms. In light of recent publications, we need to have a better understanding about how the interactions between patients, physicians and context work. It is well proven that the placebo effect is real, especially in painful disorders like OA. However, with such a large and varied amount of available treatment modalities, it's obvious that we are not considering giving sugar pills or saline solutions when talking about the use of placebos in OA treatment. Moreover, it is neither acceptable nor ethical to prescribe more frequent and/or invasive treatments, or more expensive ones to achieve a placebo response.

The greatest impact that placebo effect can have on our practice is to give us new insights about patient care. Controversial treatment modalities such as insoles<sup>[34]</sup>, viscosupplementation, mind-body therapies, physical therapies and chondroprotective drugs perhaps would not be controversial at all if the only evidence accepted didn't come from methods of evidence-based medicine that are currently very rigorous, with strict inclusion criteria, minimum follow-up requirement and the use of minimum clinically important improvement concept. It seems unrighteous, for example, to obtain statistically significant results favoring chondroprotective agents used as monotherapy and compared to a powerful placebo and consider it "not clinically relevant"<sup>[35]</sup>.

We are far from treating effectively our OA patients. And the burden of the disease only grows, since population is aging. Maybe we should make more use of non-pharmacological tools and chondroprotective agents. Even in light of the current lack of "high level of evidence" data, we should give such tools more credit, and genuinely believe that they may help. In



a positive expectation environment, with a warm and reassuring consultation and a desire for follow-up, we can surely improve practitioner-patient relationship and be more effective. We certainly can use the placebo effect to our favor.

## REFERENCES

- 1 **Lawrence RC**, Felson DT, Helmick CG, Arnold LM, Choi H, Deyo RA, Gabriel S, Hirsch R, Hochberg MC, Hunder GG, Jordan JM, Katz JN, Kremers HM, Wolfe F. Estimates of the prevalence of arthritis and other rheumatic conditions in the United States. Part II. *Arthritis Rheum* 2008; **58**: 26-35 [PMID: 18163497 DOI: 10.1002/art.23176]
- 2 **Bitton R**. The economic burden of osteoarthritis. *Am J Manag Care* 2009; **15**: S230-S235 [PMID: 19817509]
- 3 **de Rezende MU**, de Campos GC, Pailo AF. Current concepts in osteoarthritis. *Acta Ortop Bras* 2013; **21**: 120-122 [PMID: 24453655 DOI: 10.1590/S1413-78522013000200010]
- 4 **Du S**, Yuan C, Xiao X, Chu J, Qiu Y, Qian H. Self-management programs for chronic musculoskeletal pain conditions: a systematic review and meta-analysis. *Patient Educ Couns* 2011; **85**: e299-e310 [PMID: 21458196 DOI: 10.1016/j.pec.2011.02.021]
- 5 **Manheimer E**, Cheng K, Linde K, Lao L, Yoo J, Wieland S, van der Windt DA, Berman BM, Bouter LM. Acupuncture for peripheral joint osteoarthritis. *Cochrane Database Syst Rev* 2010; (1): CD001977 [PMID: 20091527 DOI: 10.1002/14651858.CD001977.pub2]
- 6 **Jansen MJ**, Viechtbauer W, Lenssen AF, Hendriks EJ, de Bie RA. Strength training alone, exercise therapy alone, and exercise therapy with passive manual mobilisation each reduce pain and disability in people with knee osteoarthritis: a systematic review. *J Physiother* 2011; **57**: 11-20 [PMID: 21402325 DOI: 10.1016/S1836-9553(11)70002-9]
- 7 **McAlindon TE**, Bannuru RR, Sullivan MC, Arden NK, Berenbaum F, Bierma-Zeinstra SM, Hawker GA, Henrotin Y, Hunter DJ, Kawaguchi H, Kwoh K, Lohmander S, Rannou F, Roos EM, Underwood M. OARSI guidelines for the non-surgical management of knee osteoarthritis. *Osteoarthritis Cartilage* 2014; **22**: 363-388 [PMID: 24462672 DOI: 10.1016/j.joca.2014.01.003]
- 8 **Hochberg MC**, Altman RD, April KT, Benkhalti M, Guyatt G, McGowan J, Towheed T, Welch V, Wells G, Tugwell P. American College of Rheumatology 2012 recommendations for the use of nonpharmacologic and pharmacologic therapies in osteoarthritis of the hand, hip, and knee. *Arthritis Care Res (Hoboken)* 2012; **64**: 465-474 [PMID: 22563589]
- 9 **Coe R**. It's the effect size, stupid: What effect size is and why it is important. 2002. Available from: URL: <http://www.trb3.org.uk/its-the-effect-size-stupid-what-effect-size-is-and-why-it-is-important/>
- 10 **Christensen R**, Bartels EM, Astrup A, Bliddal H. Effect of weight reduction in obese patients diagnosed with knee osteoarthritis: a systematic review and meta-analysis. *Ann Rheum Dis* 2007; **66**: 433-439 [PMID: 17204567 DOI: 10.1136/ard.2006.065904]
- 11 **Towheed TE**, Maxwell L, Judd MG, Catton M, Hochberg MC, Wells G. Acetaminophen for osteoarthritis. *Cochrane Database Syst Rev* 2006; (1): CD004257 [PMID: 16437479 DOI: 10.1002/14651858.CD004257.pub2]
- 12 **Lee C**, Hunsche E, Balshaw R, Kong SX, Schnitzer TJ. Need for common internal controls when assessing the relative efficacy of pharmacologic agents using a meta-analytic approach: case study of cyclooxygenase 2-selective inhibitors for the treatment of osteoarthritis. *Arthritis Rheum* 2005; **53**: 510-518 [PMID: 16082648 DOI: 10.1002/art.21328]
- 13 **de Campos GC**, Rezende MU, Pailo AF, Frucchi R, Camargo OP. Adding triamcinolone improves viscosupplementation: a randomized clinical trial. *Clin Orthop Relat Res* 2013; **471**: 613-620 [PMID: 23100188 DOI: 10.1007/s11999-012-2659-y]
- 14 **Zhang W**, Robertson J, Jones AC, Dieppe PA, Doherty M. The placebo effect and its determinants in osteoarthritis: meta-analysis of randomised controlled trials. *Ann Rheum Dis* 2008; **67**: 1716-1723 [PMID: 18541604 DOI: 10.1136/ard.2008.092015]
- 15 **Finniss DG**, Kaptchuk TJ, Miller F, Benedetti F. Biological, clinical, and ethical advances of placebo effects. *Lancet* 2010; **375**: 686-695 [PMID: 20171404 DOI: 10.1016/S0140-6736(09)61706-2]
- 16 **Kaptchuk TJ**. Powerful placebo: the dark side of the randomised controlled trial. *Lancet* 1998; **351**: 1722-1725 [PMID: 9734904 DOI: 10.1016/S0140-6736(97)10111-8]
- 17 **Anon**. The humble humbug. *Lancet* 1954; **ii**: 321
- 18 **Doherty M**, Dieppe P. The "placebo" response in osteoarthritis and its implications for clinical practice. *Osteoarthritis Cartilage* 2009; **17**: 1255-1262 [PMID: 19410027 DOI: 10.1016/j.joca.2009.03.023]
- 19 **Beecher HK**. The powerful placebo. *J Am Med Assoc* 1955; **159**: 1602-1606 [PMID: 13271123]
- 20 **Abhishek A**, Doherty M. Mechanisms of the placebo response in pain in osteoarthritis. *Osteoarthritis Cartilage* 2013; **21**: 1229-1235 [PMID: 23973135 DOI: 10.1016/j.joca.2013.04.018]
- 21 **Brody H**. Placebos and the philosophy of medicine: Clinical, conceptual, and ethical issues. 1980. Available from: URL: <http://www.amazon.com/Placebos-Philosophy-Medicine-Clinical-Conceptual/dp/0226075311>
- 22 **Hróbjartsson A**, Gøtzsche PC. Is the placebo powerless? Update of a systematic review with 52 new randomized trials comparing placebo with no treatment. *J Intern Med* 2004; **256**: 91-100 [PMID: 15257721 DOI: 10.1111/j.1365-2796.2004.01355.x]
- 23 **Blackwell B**, Bloomfield SS, Buncher CR. Demonstration to medical students of placebo responses and non-drug factors. *Lancet* 1972; **i**: 1279-1282 [PMID: 4113531]
- 24 **Branthwaite A**, Cooper P. Analgesic effects of branding in treatment of headaches. *Br Med J (Clin Res Ed)* 1981; **282**: 1576-1578 [PMID: 6786566]
- 25 **Waber RL**, Shiv B, Carmon Z, Arieli D. Commercial features of placebo and therapeutic efficacy. *JAMA* 2008; **299**: 1016-1017 [PMID: 18319411 DOI: 10.1001/jama.299.9.1016]
- 26 **Kirsch I**, Weixel LJ. Double-blind versus deceptive administration of a placebo. *Behav Neurosci* 1988; **102**: 319-323 [PMID: 3365327]
- 27 **Price DD**, Milling LS, Kirsch I, Duff A, Montgomery GH, Nicholls SS. An analysis of factors that contribute to the magnitude of placebo analgesia in an experimental paradigm. *Pain* 1999; **83**: 147-156 [PMID: 10534585]
- 28 **Colloca L**, Lopiano L, Lanotte M, Benedetti F. Overt versus covert treatment for pain, anxiety, and Parkinson's disease. *Lancet Neurol* 2004; **3**: 679-684 [PMID: 15488461 DOI: 10.1016/S1474-4422(04)00908-1]
- 29 **Suarez-Almazor ME**, Looney C, Liu Y, Cox V, Pietz K, Marcus DM, Street RL. A randomized controlled trial of acupuncture for osteoarthritis of the knee: effects of patient-provider communication. *Arthritis Care Res (Hoboken)* 2010; **62**: 1229-1236 [PMID: 20506122 DOI: 10.1002/acr.20225]
- 30 **Weinberger M**, Tierney WM, Booher P, Katz BP. Can the provision of information to patients with osteoarthritis improve functional status? A randomized, controlled trial. *Arthritis Rheum* 1989; **32**: 1577-1583 [PMID: 2688659]
- 31 **Bannuru R**, Schmid C, Sullivan M, Kent D, Wong J, McAlindon T. Differential response of placebo treatments in osteoarthritis trials: a systematic review and network meta-analysis. *Osteoarthritis and Cartilage* 2014; **22**: S24-S25 [DOI: 10.1016/j.joca.2014.02.068]
- 32 **Sihvonen R**, Paaola M, Malmivaara A, Itälä A, Joukainen A, Nurmi H, Kalske J, Järvinen TL. Arthroscopic partial meniscectomy versus sham surgery for a degenerative meniscal tear. *N Engl J Med* 2013; **369**: 2515-2524 [PMID: 24369076 DOI: 10.1056/NEJMoa1305189]
- 33 **Thomas KB**. General practice consultations: is there any point in being positive? *Br Med J (Clin Res Ed)* 1987; **294**: 1200-1202

- [PMID: 3109581]
- 34 **Campos GC**, Rezende MU, Pasqualin T, Frucchi R, Bolliger Neto R. Lateral wedge insole for knee osteoarthritis: randomized clinical trial. *Sao Paulo Med J* 2015; **133**: 13-19 [PMID: 25626851 DOI: 10.1590/1516-3180.2013.6750002]
- 35 **Campos GC**. Chondroprotective agents: are we being too dogmatic?. *Medicalexpress* 2014; **1**: 211-213 [DOI: 10.5935/MedicalExpress.2014.04.10]

**P- Reviewer:** Erdil M, Gasparini G, La Montagna G, Saviola G  
**S- Editor:** Ji FF **L- Editor:** A **E- Editor:** Zhang DN



## Effect of bone loss in anterior shoulder instability

Grant H Garcia, Joseph N Liu, David M Dines, Joshua S Dines

Grant H Garcia, Joseph N Liu, David M Dines, Joshua S Dines, Department of Orthopedic Surgery, Hospital for Special Surgery, New York, NY 10021, United States

**Author contributions:** All authors contributed to this manuscript.

**Conflict-of-interest:** David M Dines has a patent with Biomet Inc with royalties paid. Joshua S Dines reports personal fees from Arthrex, Conmed Linvatec outside of the submitted work for consulting. Dr. Dines also receives research support from Arthrex outside of the submitted work. Joseph N Liu and Grant H Garcia have no conflicts of interest to report.

**Open-Access:** This article is an open-access article which was selected by an in-house editor and fully peer-reviewed by external reviewers. It is distributed in accordance with the Creative Commons Attribution Non Commercial (CC BY-NC 4.0) license, which permits others to distribute, remix, adapt, build upon this work non-commercially, and license their derivative works on different terms, provided the original work is properly cited and the use is non-commercial. See: <http://creativecommons.org/licenses/by-nc/4.0/>

**Correspondence to:** Grant H Garcia, MD, Department of Orthopedic Surgery, Hospital for Special Surgery, 535 East 70<sup>th</sup> Street, New York, NY 10021, United States. [garcia@hss.edu](mailto:garcia@hss.edu)  
Telephone: +1-212-6061466

Received: March 16, 2015

Peer-review started: March 21, 2015

First decision: April 10, 2015

Revised: April 20, 2015

Accepted: May 5, 2015

Article in press: May 6, 2015

Published online: June 18, 2015

recurrent instability. Our review provides an overview of current literature addressing these treatment options and others for addressing bone loss complicating anterior glenohumeral instability.

**Key words:** Latarjet; Remplissage; Glenoid deficiency; Hill-Sachs lesion; Anterior instability

© The Author(s) 2015. Published by Baishideng Publishing Group Inc. All rights reserved.

**Core tip:** Anterior bony instability is a multifactorial problem, with osseous lesions existing on the glenoid, the humeral head or in combination. For glenoid lesions recent data has suggested Latarjet as a good option in these patients, with the potential in the near future for a technically feasible arthroscopic approach. With humeral head lesions, remplissage has demonstrated excellent short-term outcomes and offers an arthroscopic method. In the future longer-term studies will be needed for the remplissage procedure. Overall, there are many surgical options to treat these difficult patients each with their own unique aspects.

Garcia GH, Liu JN, Dines DM, Dines JS. Effect of bone loss in anterior shoulder instability. *World J Orthop* 2015; 6(5): 421-433 Available from: URL: <http://www.wjgnet.com/2218-5836/full/v6/i5/421.htm> DOI: <http://dx.doi.org/10.5312/wjo.v6.i5.421>

### Abstract

Anterior shoulder instability with bone loss can be a difficult problem to treat. It usually involves a component of either glenoid deficiency or a Hill-Sachs lesion. Recent data shows that soft tissue procedures alone are typically not adequate to provide stability to the shoulder. As such, numerous surgical procedures have been described to directly address these bony deficits. For glenoid defects, coracoid transfer and iliac crest bone block procedures are popular and effective. For humeral head defects, both remplissage and osteochondral allografts have decreased the rates of

### INTRODUCTION

The incidence of shoulder instability in the population is estimated to be as high as 2%<sup>[1]</sup>. While many first-time dislocators can be managed conservatively, there are specific patient groups that have a higher risk for dislocation after a single event and may benefit from surgical stabilization. For example, Taylor *et al*<sup>[2]</sup> found increased risk of recurrence in overhead athletes and participants in contact sports. In addition, hyperlaxity has been an identified risk factor<sup>[3]</sup>. Of the risk

factors for recurrence, the most predictive is age at the time of first dislocation. Increasing instability risk has been found to be inversely proportional to the age of the patient<sup>[4]</sup>. For example, in older patients the risk of instability ranges from 10% to 20%<sup>[5]</sup>; yet in skeletally immature patients, Marans *et al*<sup>[6]</sup> found a re-dislocation rate of up to 100%. While demographics play a major role in anterior instability, intra-articular pathology also has a strong association.

The most difficult dislocators to treat are those with bony deficits. After first time anterior dislocation, glenohumeral deficiency (humeral head defect, glenoid defect or combination of both) has been found in up to 70% of patients<sup>[7]</sup>. While small defects tend to have limited implications on overall stability, there is a significantly increased risk of instability as the size of the humeral head lesion or glenoid deficiency increases<sup>[8,9]</sup>. Historically, these large defects had been treated with isolated soft tissue procedures, but further biomechanical and clinical studies have led to treatment algorithms that focus more on addressing the bone loss. Given these concerns, our purpose is to review recent data on surgical management of anterior instability with associated bone loss.

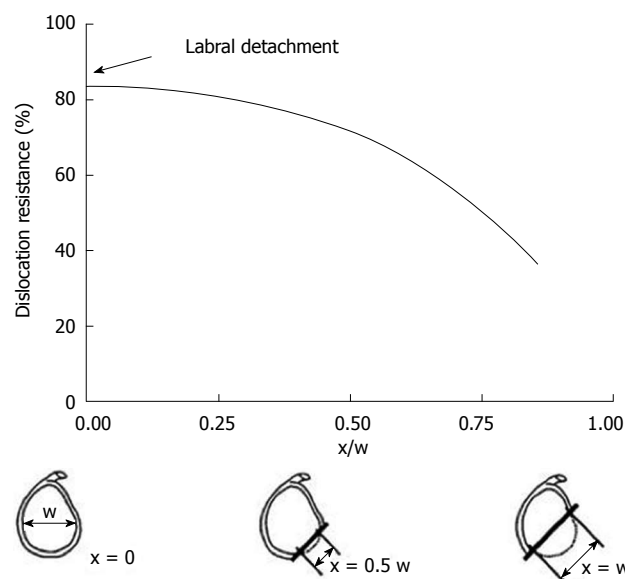
## TYPES OF BONE LOSS

In bony anterior instability, both articulations of the glenohumeral joint have been associated with increased risk of further dislocations. Defects can occur on the glenoid side (*i.e.*, Bony Bankart lesions), on the humeral side (*i.e.*, Hill Sachs lesions), or on both sides.

### Glenoid deficits

Glenoid deficiency has been found in up to 22% of patients after initial dislocation<sup>[10]</sup>. In recurrent instability cases their incidence ranges from 46% to 86%<sup>[11,12]</sup>. To understand the biomechanics of the glenoid deficiency, initial discussion should be begin with the discussion of small defects. First described by Dr. Arthur Bankart, these anterior labral lesions (known as Bankart lesions) increase the risk of instability. If a small piece of the anterior glenoid rim is concomitant with these labral tears some refer to this as "bony Bankart lesions. As the pieces become large the propensity for dislocation increases. As these defects approach greater than 20% to 25% of the glenoid the glenoid appearance changes. Burkhart *et al*<sup>[13]</sup> first described this glenoid appearance as an "inverted pear". His colleagues found in larger defects the standard pear shaped appearance of the glenoid was reversed. As a result the glenoid is wider superiorly than inferiorly, giving it an inverted pear appearance. When this occurs, they described a disruption in the arc of motion with abduction and external rotation of the arm, creating an increased risk of recurrent dislocation.

Gerber *et al*<sup>[14]</sup> confirmed this theory in their



**Figure 1** The graph demonstrates the relationship between the size of the glenoid rim and the dislocation risk. When defect ( $x$ ) measure more than 50% of the glenoid width there is a significant drop in dislocation resistance. Adapted with permission from *Clin Orthop Related Res* 2002; **400**: 65-76.

biomechanical study. They found with subsequent loss of anterior inferior glenoid arc the resistances to dislocation decreased exponentially (Figure 1). Newer biomechanical studies have further described this "glenoid track". This concept has shifted the previous paradigm from engaging defects to track-off track mismatch. Yamamoto *et al*<sup>[15]</sup> evaluated 9 cadaveric shoulders and found dislocation was most likely with disruption of the medial margin of this track.

While understanding the biomechanics of glenoid defects is necessary, Bigliani's classification of the glenoid deficit best defines clinical prognostic features<sup>[11]</sup>. He defined four types of glenoid defects: type 1 involves a non-displaced anterior glenoid fragment, type 2 is a small detached anterior fragment, and type 3a involves anterior glenoid deficits of < 25%, while type 3b involves defects greater than 25%. These distinctions determine the need for bony reconstruction. They recommended soft tissue procedures for types 1, 2, 3a while type 3b defects should have glenoid augmentation. Mologne *et al*<sup>[16]</sup> also recommend glenoid restoration for defects greater than 20% to 25% of the glenoid surface. They reached this conclusion after performing soft tissue repair on 23 patients with glenoid defects greater than 20% and had a 14% failure rate at 34 mo follow up when bony incorporation did not occur. An additional study by Burkhart *et al*<sup>[17]</sup>, who performed 194 consecutive arthroscopic Bankart repairs and found in 18 patients with glenoid defects larger than 25% of the glenoid<sup>[17]</sup>. In this group they had a failure rate 67%, compared to the failure rate of patients without bony defects at 4%. As a result, they advocated for addressing the bony defects, as soft tissue repair alone did not provide



adequate stability.

These glenoid cutoffs have been further supported by other biomechanical studies. Itoi *et al.*<sup>[18]</sup> evaluated 10 cadaveric shoulders and performed four separate glenoid osteotomies each with increasingly larger deficits. They found a significant decrease in stability with glenoid defects above 21%. Greis *et al.*<sup>[19]</sup>, who had similar study methods, reported significant increases in dislocation risk and contact pressures at more than 31% loss of the glenoid arc. Overall, these studies support that isolated soft tissue repair is likely insufficient in preventing recurrent instability in patients with large glenoid deficiencies.

### Humeral head defects

While humeral head defects can be found concomitantly with glenoid pathology, isolated depressions can significantly affect the stability of the shoulder. These lesions have been found in up to 70% of first time dislocators<sup>[7]</sup>, and up to 100% of patients with recurrent instability or after failed primary stabilization<sup>[7,10,20,21]</sup>.

Hill and Sachs<sup>[22]</sup> first classified these lesions in 1940; as such they are frequently referred to as "Hill-Sachs lesions". In their landmark study they recognized these defects as markers for instability after an acute shoulder dislocation. These lesions were further defined by Boileau, who identified small to large Hill-Sachs lesions in up to 85% of their patients. They found significantly increased rates of recurrent instability in patients with these "Large" lesions<sup>[23]</sup>. In a retrospective case review by Burkhart and De Beers they explained that engagement into the glenoid rim was also needed for recurrent instability, and reported 100% recurrence in patients with an engaging Hill-Sachs<sup>[24]</sup>. As such this finding led them to suggest that if an engaging lesion is recognized, one must address not only the Bankart lesion but also take additional steps to treat the humeral head defect. In a follow up study, they further described this pattern of engagement, stating the Hill-Sachs lesion must be parallel to the arc of motion of the glenoid with abduction and external rotation to be truly engaging<sup>[17]</sup>.

Despite previous clinical descriptions of size based on retrospective cases series, limited descriptions were available to define the percent of the humeral head defect necessary to cause recurrent instability. More recent biomechanical testing by Sekiya *et al.*<sup>[25]</sup> demonstrated that humeral head lesions greater than 25% of the articular surface significantly increase the risk of recurrent instability. They recommended directly addressing the bony defect in these patients to prevent further instability. Additional studies have found ways to calculate this percent on MRI and CT scan to better define this distinct patient population<sup>[26,27]</sup>.

### Combined defects

While both Hill-Sachs lesions and glenoid defects each have an effect on the stability of the glenohumeral

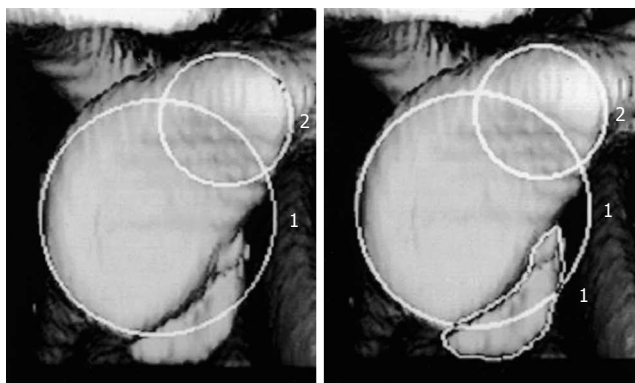
joint, combined lesion can add a level of complexity with regards to proper treatment selection. Indications for surgical management have been well described for isolated humeral head and glenoid defects. A recent study by Arceiro *et al.*<sup>[28]</sup>, evaluated the combined biomechanical effect of concomitant lesions. They developed their model using three-dimensional printing from CT scans of 142 patients, with varying degrees glenoid and Hill-Sachs lesions. After testing they found medium size Hill-Sachs lesion became clinically significant with greater than 2 mm of glenoid bone loss. Additionally with glenoid loss greater than 4 mm even small Hill-Sachs defects significantly increased instability despite a Bankart repair. As a result, they suggested bony augmentation with these combined defects. This understanding of the effects of these lesions on one another is essential, as soft tissue repair alone is likely not adequate in these clinical scenarios.

### History

Clinical assessment of bony shoulder instability begins with a detailed history. Typically, an initial high-energy dislocation event occurs with the arm in an abducted, externally rotated, and extended position. These episodes often require reduction in the emergency room. Mechanisms involving an axial load on the glenoid predispose glenoid bone involvement<sup>[24]</sup>. Complaints of mechanical symptoms such as pain, crepitus, or catching when the arm is placed in the position of apprehension (abduction, external rotation) are suggestive of an engaging Hill-Sachs lesion. Subsequent instability in the midranges of motion (e.g., 20 to 60 degrees of abduction)<sup>[29]</sup> or after lower energy events and with daily activities of living may suggest loss of bony constraints of the glenohumeral joint such as a large glenoid or humeral head defect<sup>[30-32]</sup>. Additionally, failed arthroscopic capsulolabral reconstructions or multiple recurrences within a short timeframe are suggestive of significant bony defects.

## PHYSICAL EXAM

Both shoulders should be examined for evidence of muscular atrophy, deformities, active and passive range of motion, and evidence of prior surgeries. A careful neurovascular exam, including an accurate assessment of the axillary nerve should be performed, as axillary nerve injuries are commonly observed in the acute setting<sup>[33]</sup>. Assessment of the rotator cuff, with special attention to subscapularis function, should be performed particularly in patients who have undergone prior open stabilization because of potential for subscapularis repair failure. When performing provocative maneuvers, such as the apprehension test and relocation test, comparison to the contralateral shoulder is necessary to quantify the direction and magnitude of laxity. The load and shift test can identify the direction of instability as well as the adequacy of the glenoid concavity. To perform this test, a load is



**Figure 2** Using 3D reconstruction computed tomography the size of the defect is calculated as the percentage of the on fossa glenoid. Using circle 2 as the reference selected by the radiologist, the CT software automatically calculates the deficit by using the equation (area of the deficit/circle 1  $\times$  100%). Adapted with permission from *JBJS Am* 2003; **85-A**: 878-884.

placed on the humeral head to center it within the glenoid, and then a displacing force, either anterior or posterior, is applied to the humeral head. A decrease in resistance may be suggestive of a glenoid defect in the direction of displacement. The patient should also be asked to demonstrate the position of the shoulder at the time of initial dislocation or other subsequent events of instability or apprehension. Unlike patients with multidirectional instability, unidirectional and greater apprehension in the early and midrange of motion (e.g., 20 to 60 degrees) is also suggestive of more significant soft-tissue pathology and/or bony involvement<sup>[34,35]</sup>.

## IMAGING

While plain radiographs remain the mainstay of initial assessment, they are only moderately accurate at diagnosing bony defects<sup>[11,36]</sup>. Glenoid fragments may be visualized on standard AP or projects parallel to the glenoid such as an axillary or glenoid profile view<sup>[37]</sup>. Angled projects, such as the apical oblique<sup>[38]</sup> or Didiee<sup>[39]</sup>, views have the highest yield in detecting glenoid defects on plain radiographs. The West Point view function similar to the Garth view but is designed to assess the anterior-inferior glenoid rim<sup>[40]</sup> and has demonstrated a high correlation with computed tomography (CT) in estimating glenoid bone loss<sup>[36]</sup>. Another view most commonly used in Europe is the Bergeneau view to assess anterior inferior bone loss. This view requires fluoroscopic imaging to get the perfect on fosse view as such its utility has been limited in the United States<sup>[41]</sup>. For humeral lesions, the Stryker notch or internal rotated AP views are more sensitive<sup>[39]</sup>. The Stryker notch, which can evaluate the size and orientation of a Hill-Sachs lesion<sup>[42]</sup>, is obtained by placing the palm of the hand on top of the head, with fingers directed toward the back of the head. The beam is centered over the coracoid process and aimed 10 degrees cephalad.

CT with 3D reconstruction, however, remains the gold standard in the evaluation of bone deficiency<sup>[11]</sup>. The sagittal 3D reconstruction with digital subtraction of the humeral head has been recommended for the evaluation of glenoid deficiency<sup>[32,43,44]</sup>. Using this

modality, the glenoid defect can be quantified. A best-fit circle drawn on the inferior two thirds of the glenoid and the amount of bone missing is determined as a percentage of the total surface area of the circle. This is calculated directly by CT scan software<sup>[26,45]</sup> (Figure 2). To assess humeral lesions, the defect arc on coronal or axial cuts can be divided by the humeral head arc to quantify Hill-Sachs lesions<sup>[46]</sup>. Magnetic resonance imaging (MRI) may be useful in evaluating glenoid rim defects, soft tissue lesions, and for quantifying humeral impaction fractures, but are generally thought to be less accurate than CT for bony assessment<sup>[27,47]</sup>.

## ARTHROSCOPY MEASUREMENTS

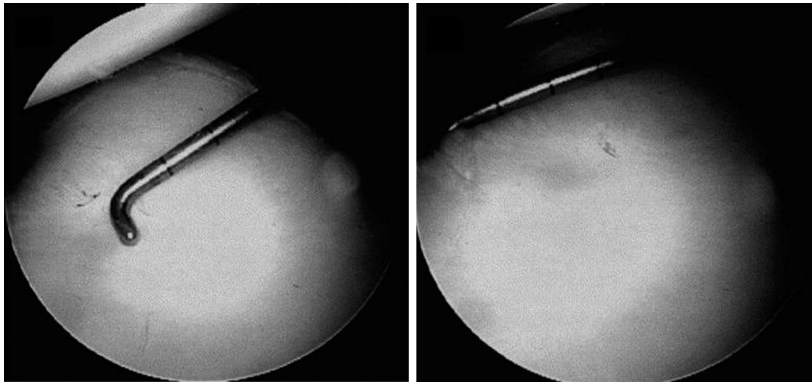
An evaluation and assessment of bony defects should be performed during the initial diagnostic arthroscopy. The bare area has been shown to reliably mark the center of the inferior glenoid<sup>[45,48,49]</sup>. Using the bare area as a landmark, a calibrated probe can used to measure the distance from the bare spot to the posterior rim and compare it to the distance from the anterior rim. Assuming that the normal inferior glenoid is shaped as a nearly perfect circle<sup>[45]</sup>, anterior-inferior glenoid deficiencies can then be quantified by the following<sup>[50]</sup>:

Glenoid deficiency = (Distance from bare spot to posterior rim - Distance from bare spot to anterior rim)/(2  $\times$  Distance from bare area to posterior rim)

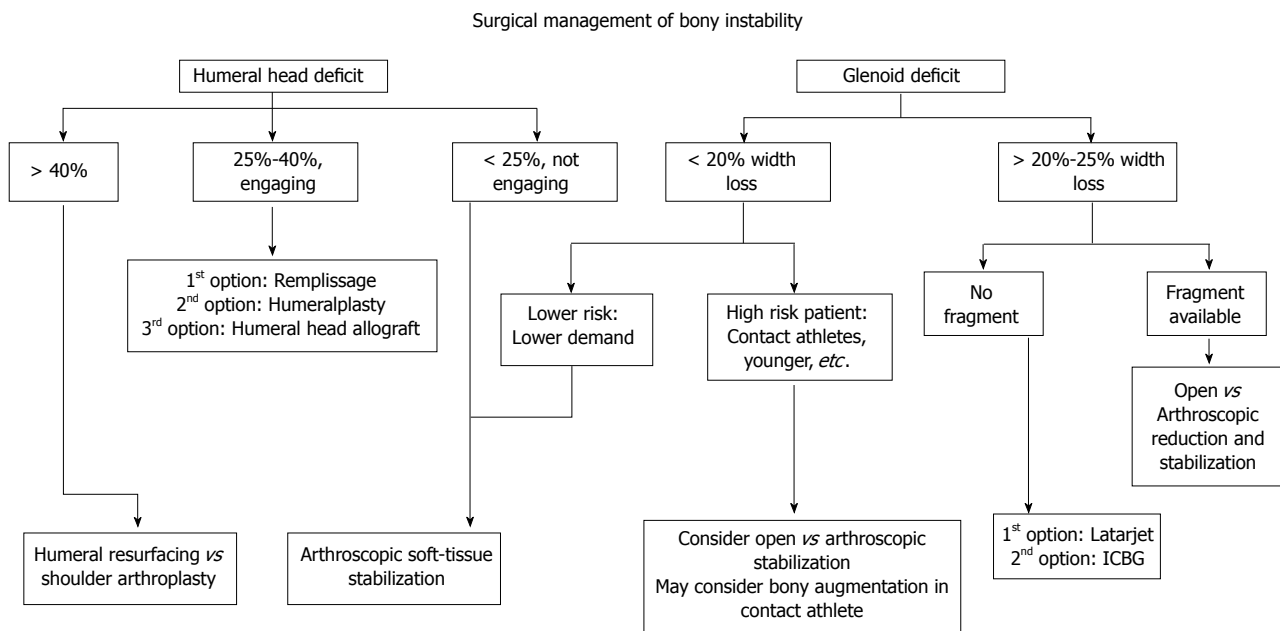
Quantification of glenoid bone loss should be routinely performed to determine the ideal anterior stabilization procedure (Figure 3).

## OPEN VS ARTHROSCOPIC TECHNIQUES

With advancing technology, arthroscopic techniques are becoming more popular. For small defects or soft tissues avulsions, the results are fairly definitive. Recent studies have demonstrated similar recurrence rate and outcomes for arthroscopic techniques compared to open procedures in most patient populations<sup>[51]</sup>. A larger systematic review by Harris *et al*<sup>[52]</sup> evaluated longer-term outcomes of Bankart repairs from 26 studies and also found no statistical difference between open vs arthroscopic approaches<sup>[52]</sup>.



**Figure 3** Through a posterior portal a 3 mm calibrate probe is inserted and the distance from the center of the bare spot to the posterior glenoid rim is measured. Following the distance from the bare sport to the anterior glenoid rim is measured. These values are used to preform the final glenoid deficit calculation. Adapted with permission from *Arthroscopy* 2004; 20: 169-174.



**Figure 4** Our treatment algorithm of bony anterior shoulder stability. First determination of the size of the defect is done, followed by evaluation of specific risk factors. For large glenoid defects the Latarjet procedure is preferred, while Hill-Sachs defects the remplissage is our recommended procedure.

Despite this data most studies have failed to evaluate specific patient groups at higher risk. Burkhart *et al.*<sup>[24]</sup> recommend open surgical management with younger patients, overhead or contact athletes. Another study by Rhee *et al.*<sup>[4]</sup> found significantly higher recurrence rates after arthroscopic stabilization at 25% compared to open procedures at 13% in these contact athletes. As such they suggested open repair in these patients. In addition, a prospective study by Mohtadi *et al.*<sup>[53]</sup> randomized 196 patients without identified bony lesions on radiographs to open vs arthroscopic repair. Additionally they matched patients by age (average age 27 years) and sex. They reported lower recurrence rates after open procedures at 11% compared to 23% for the arthroscopic stabilization group. While these are impressive results, they did have a trend towards more patients in the arthroscopic group who played a contact sport ( $P < 0.09$ ). Finally a metaanalysis by Chen *et al.*<sup>[54]</sup> of 16 trials with 827 shoulders compared open to arthroscopic stabilization. They found arthroscopic

approaches had significantly better post-operative range of motion, but reoperation rate (10.1% vs 3.5%; OR 2.63) and recurrence rate (13.1% vs 4.5%; OR 2.63) were significantly higher than open repair. While arthroscopic techniques are more commonly chosen for soft tissue instability, there has been a trend towards open stabilization for bony defects and certain high-risk groups.

## SURGICAL MANAGEMENT

### Glenoid defects

Large glenoid defects can be a difficult problem to manage (Figure 4). The initial consideration when determining the best treatment should include evaluation of the acuity of the glenoid injury. For acute lesions, Park *et al.*<sup>[55]</sup> reported good results after direct repair of the fracture. For chronic injuries there is generally no fragment and bone loss must be reconstructed. We will review surgical techniques for these chronic glenoid defects.

### The bristow procedure

Helfet first described the Bristow procedure in 1958. It involved transfer of the terminal 1 cm of the coracoid to the glenoid rim<sup>[56]</sup>. Usually the piece is secured with a single screw. The conjoint tendon is left intact to the transferred coracoid piece to act as a soft-tissue sling in abduction. Alternatively, detaching the tendinous attachments from the coracoid graft has been described, though we do not recommend this.

Hovelius *et al*<sup>[57]</sup> performed one of the largest studies of the Bristow procedure. He prospectively evaluated 319 patients with an average follow up was 15.2 years and an overall satisfaction rate of 95%. For outcome scores, they reported 86% excellent to good Rowe scores and WOSI scores of 84.7%. Their recurrence rate was 20%, with 5% dislocation and 15% of patients with a postoperative subluxation. Additionally they found 14% of patients had mild arthropathy on radiographs, which directly correlated with lateral misplacement of the coracoid graft.

In the study by Schroder *et al*<sup>[58]</sup>, the authors reported results of the Bristow procedure on 52 Navy midshipmen with 26 year follow up<sup>[58]</sup>. The failure rate was 15.4% with 9.6% dislocations and 5.8% subluxations. Sixty-nine percent of postoperative WOSI scores were good to excellent. They also found a significant loss in external rotation as well as an increased risk of glenohumeral arthritis in their cohort. Furthermore, 15% of the patients underwent a revision surgery on their shoulder.

Yamashita *et al*<sup>[59]</sup> evaluated 126 patients treated with concomitant Bankart repair and Bristow procedure. Their follow up was 41 mo, with a recurrence rate at 1.6%. For range of motion they reported an average loss of external rotation of 13 degrees.

While results have been promising for the Bristow procedure, longer-term studies have demonstrated increased risk of glenohumeral arthritis and external rotation loss as well as recurrence rates of up to 18%. These factors must be taken into account in treating this difficult patient population.

### The Latarjet procedure

Dr. Michel Latarjet described the Latarjet procedure four years before the Bristow procedure<sup>[60]</sup>. While studies have used term Latarjet-Bristow procedure synonymously, there are variable differences. Recently, the Latarjet has been the preferred technique because it uses a larger coracoid osteotomy of 2 to 3 cm. This increased length allows the surgeon to place the fragment more perpendicular to the base of the glenoid. Additionally, biomechanical evaluation has demonstrated improved stability with larger portions of the coracoid. Giles *et al*<sup>[61]</sup> evaluated 8 cadaveric shoulders comparing the stability of the Bristow to the Latarjet procedure. They found significantly more dislocations in the Bristow group with glenoid defects of 15% and 30% in comparison to the Latarjet

procedure. As a result, they recommend the Latarjet procedure for these larger glenoid defects.

For surgical technique, a 1-cm cuff of coraco-acromial ligament (CAL) is left on the coracoid process (Figure 5). The coracoid is osteotomized at the "knee" (junction of horizontal and vertical parts), perpendicular to its base. All soft tissue is removed except the conjoint tendon and the CAL stump. Next the graft is molded with an oscillating saw to expose a broad flat cancellous bed to optimize healing. The coracoid is predrilled with 2 k-wire roughly 1 cm apart. The graft is passed through a split in the mid-portion of the subscapularis tendon and is then fixed 1-2 mm medial with the glenoid articular surface. This is done with two partially threaded screws, starting with the inferior screw. Following this the capsule is imbricated to the CAL stump with two sutures<sup>[62]</sup> (Figure 6).

A long-term study by Allain *et al*<sup>[63]</sup> evaluated 56 patients with an average follow up of 14.3 years who underwent the Latarjet procedure. For outcomes they reported 88% good to excellent Rowe scores. Their failure rate was 12% with no recurrent dislocations and 12% subluxations. As for range of motion, they had a significant loss of external rotation of 21 degrees. For longer-term evaluation, 65% of their patient developed glenohumeral arthritis. As a result they analyzed coracoid placement and deduced lateral overhang increased risk of arthritis while over medialization increased the risk of recurrent instability.

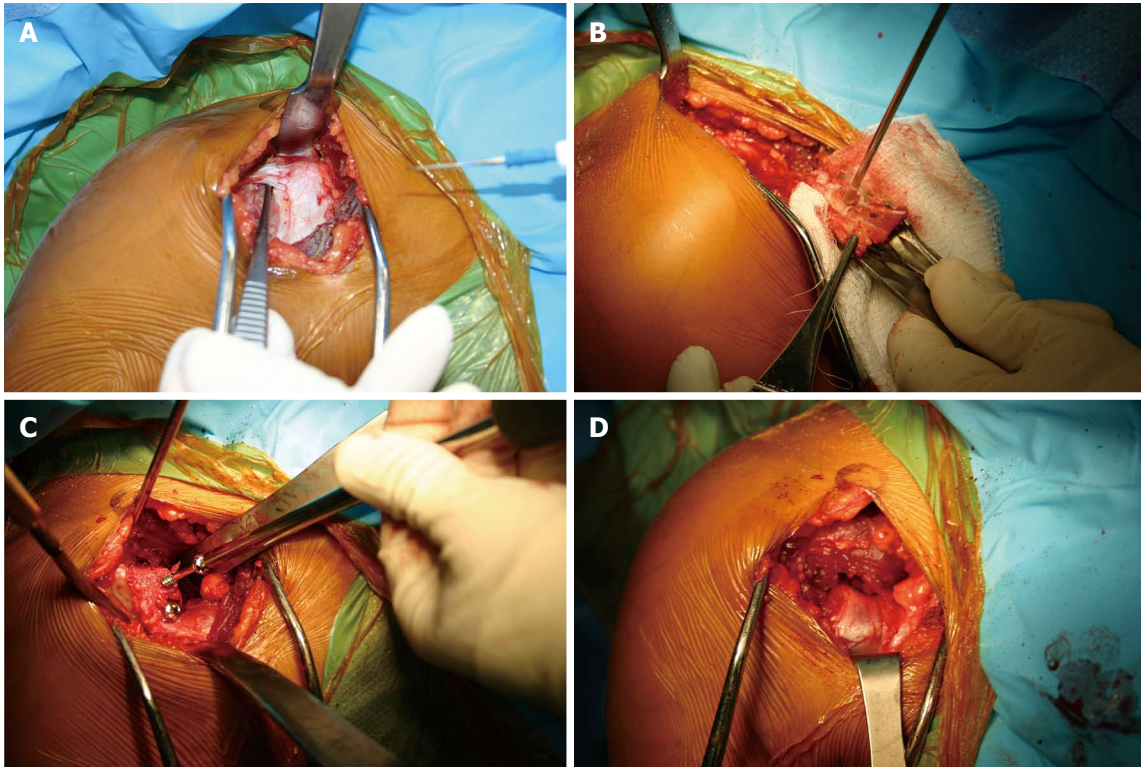
An additional study by Mizuno *et al*<sup>[64]</sup> evaluated 68 patients with an average follow up of 20 years. Their average postoperative Rowe scores were 89.0 with a documented failure rate of 5.9%. With regards to arthritis, 20% of the patients had signs of glenohumeral arthritis at most recent follow up. Their risk factors for arthritis included age, high demand sports and lateral placement of coracoid.

The largest combined series reported by Young *et al*<sup>[62]</sup> evaluates over 2000 patients treated with the open Latarjet procedure. For outcomes, 76% of patients had good to excellent Rowe scores. Also, 83% of patients returned to their preinjury sports level after surgery. They reported a failure rate of 1%, with no significant loss of external rotation.

Burkhart *et al*<sup>[65]</sup> performed a modified Latarjet procedure on 102 patients with an average follow up of 4.9 years. For outcomes scores, their average Constant scores were 94.4. They reported a failure rate of 4.9% with 4 dislocations and 1 subluxation. In addition, they did not have a significant loss of external rotation with an average loss of 5.1 degrees.

While most reported series of Latarjet are performed as an open procedure, LaFosse recently described an arthroscopic technique. Dumont *et al*<sup>[66]</sup> published these results on 62 patients who underwent arthroscopic Latarjet with an average follow up of 6.4 years. Their reported failure rate was 1.6%, with no dislocations and 1 subluxation. For outcome scores their average





**Figure 5** Intraoperative photos of the Latarjet technique. (A) Though a deltopectoral approach the coracoid is identified (B) after osteotomizing the coracoid the entry points for the 2 screws are predilled, and the soft tissue attachments are preserved (C) The coracoid fragment is secured with 2 partially thread screws on the anterior surface of the glenoid (D) The joint capsule is secured to the coracoid fragment with 2 sutures.

WOSI score was 90.6. While these results are promising the arthroscopic approach can be technically demanding.

An additional arthroscopic study by Boileau *et al*<sup>[67]</sup> performed an arthroscopic Bristow-Latarjet procedure on 79 patients with a mean follow up of 35 mo. At final follow up, their average Rowe scores were 89.7 with a recurrence rate of 2%. For return to sport, 83% of patients returned to pre-injury level. They reported an average loss of 9 degrees of external rotation, with 73% of grafts demonstrating full healing at final follow up. They determined risk factors for non-union included age higher than 35 years old, smoking, or misplacement of screws. As such age and smoking should be taken into consideration before performing this procedure.

The Latarjet procedure offers a good option for large glenoid defects. Concerns about external rotation loss and long term arthritis still exist, though these may be minor in comparison to the reduced recurrent instability rates for this complicated patient population. An advance in techniques such as the arthroscopic methods has promise; though the learning curve needs to be improved before the full clinical application can be evaluated.

#### **Eden-hybinette procedure**

Similar to the Latarjet, the Eden-Hybinette procedure directly addresses large glenoid lesions. Hindmarsh

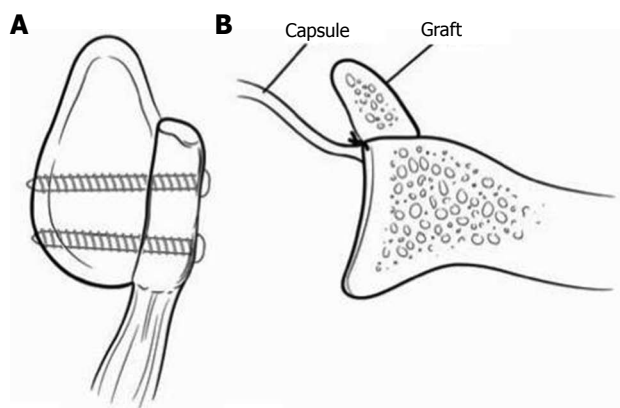
first described this in 1967 using tibia autograft to reconstruct the glenoid track<sup>[68]</sup>. Recently this technique has been broadened to the use of iliac crest, femoral head, or osteochondral allograft to re-approximate the glenoid track<sup>[29,69,70]</sup>. Of these the most commonly used today is the iliac crest graft.

In this procedure, the curve of iliac wing is matched to that of the glenoid, with the concave inner table facing laterally. The graft is fixed such that the iliac wing natural contour roughly matches that of the glenoid articular arc. The cancellous base of the graft is secured to the glenoid neck with two screws. As opposed to the Latarjet, the capsule is attached anterior to the bone block, making the graft intra-articular (Figure 7).

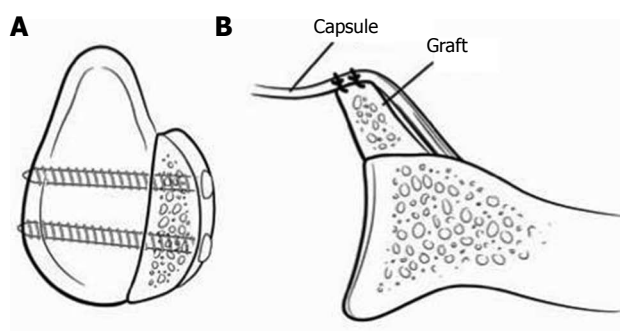
Warner *et al*<sup>[29]</sup> performed this procedure on 11 patients with an average follow up of 33 mo. They reported no failures and at six month CT evaluation, all grafts had fully incorporated into the glenoid.

More recently, Scheibel *et al*<sup>[71]</sup> reported on 10 patients who underwent tricortical grafting. Their average follow up was 37.9 mo and reported no cases of recurrent instability. Average Constant scores were 88.3 and WOSI scores were 82.6. On further CT imaging they had full incorporation of all grafts and calculated that the glenoid track increased by an average of 18.4%. After examining radiographs, 30% of patients had signs of mild osteoarthritis.

A larger cohort by Auffarth *et al*<sup>[72]</sup> reviewed 47



**Figure 6** Represents a Latarjet procedure. A: A sagittal view with 2 screws securing the coracoid fragment; B: The capsule is secured posterior to the graft making the construct extra-articular. Adapted with permission from *J Am Acad Orthop Surg* 2009; 17: 482-493.

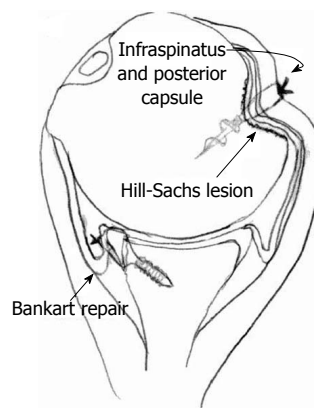


**Figure 7** Represents an iliac crest autograft. A: A sagittal view with 2 screws securing the iliac crest; B: The capsule is placed anteriorly making the construct intra-articular. The grafts natural wing is facing towards the joint to better match the glenoid previous contour. Adapted with permission from *J Am Acad Orthop Surg* 2009; 17: 482-493.

patients with an average Rowe score of 94.3 and no recurrent instability. Postoperatively, they had one traumatic graft failure and five iatrogenic nerve palsies at the donor site. In addition, long term data found 19.1% patients developed mild to moderate arthritis despite anatomic reduction.

Longer-term follow up Rahme *et al*<sup>[73]</sup> found more complications than previous studies. They reported results of 77 patients with a mean follow up of 29 years. Overall 83% of patients had good to excellent Rowe scores. Of concern they had a 20% recurrence rate. Furthermore, 50% of their patients developed glenohumeral arthritis and had a significant loss of external rotation. Additionally there were risks found associated with the use of autologous iliac crest graft, including hip pain and wound complications.

While these long-term results have limited the procedure's overall clinical use, recent reports by Lunn *et al*<sup>[74]</sup> found it to be an adequate alternative after failed Latarjet procedure. They performed the procedure on 46 patients after recurrent instability with a previous Latarjet procedure. They reported good to excellent results in 70% of patients with a 13.0%



**Figure 8** The remplissage technique with a suture anchor securing the infraspinatus and the posterior capsule into the Hill-Sachs defect. In addition, a Bankart repair is performed during the procedure. Adapted with permission from *Arthroscopy* 2008; 24: 723-726.

failure rate.

As iliac crest bone graft has recently been the mainstay of allograft glenoid augmentation, additional studies have evaluated other sources for glenoid arc restoration. Provencher *et al*<sup>[69]</sup> used distal tibia allograft for glenoid deficiencies greater than 25%. In addition they reported biomechanical data stating constant pressure remained low in the implanted allograft with range of motion testing. In their cadavers, they showed the articular deformity reconstructed by the tibial allograft was nearly identical to the intact state. For patient results, they reported good results in a series of three patients with full incorporation of the graft on CT scan at final follow up. Despite good fusions, they did not report range of motion testing or recurrence rates.

Another source a graft used by Weng *et al*<sup>[70]</sup>, was fresh frozen glenoid allograft. They performed the procedure on 9 patients with an average follow up of 4.5 years. All patients achieved bony union at 6 mo, with a mean loss of external rotation of 7 degrees. Despite some positive aspects of their study, they had a 22.2% recurrence rate. Given this high recurrence rate it's likely further studies are need to determine the true clinical application of this procedure.

Overall since the introduction of the Eden-Hybinette procedure, many modifications of the technique have been described. While iliac crest bone grafting has become the predominant technique it is not without complications. These must be taken in consideration, and in many cases stabilization of the glenoid deficiency is based on surgeon preference as well as training.

## HUMERAL HEAD LESIONS

While many patients with recurrent instability have elements of both glenoid and humeral bone loss, the amount of deficiency of each directly impacts surgical outcomes. Even in combined cases of both

glenoid and humeral bone loss, patient with large Hill-Sachs lesions continued to have instability despite glenoid reconstruction<sup>[75]</sup>. These findings suggest the need to directly address these Hill-Sachs lesions. In most studies, humeral head procedures are usually reserved for patients with deficits of 25% to 40%<sup>[76]</sup>. Yet while size plays an important role, the position of the engagement with abduction and external rotation (generally posterior and superior on the humeral head) increases the risk of dislocation as well<sup>[77]</sup> (Figure 4).

### **The remplissage procedure**

The remplissage technique has become more popular in recent years as one of the mainstay treatments for large engaging Hill-Sachs lesions. Originating from the French word "to fill", it has gained further attention because it can be done arthroscopically and is technically reproducible. Purchase and Wolf originally described it in 2007. The procedure involves arthroscopic tenodesis of the infraspinatus into the humeral head defect and usually is accompanied by a Bankart repair<sup>[78]</sup> (Figure 8).

Boileau *et al.*<sup>[79]</sup> evaluated 47 patients treated with remplissage with a mean follow up of 24 mo. Overall they had a 2% recurrence rate and reported an average loss of external rotation of 9 degrees. As for return to sports, 90% of patients returned to their previous sport and 68% of patients returned to their previous level of sport.

An early study by Park *et al.*<sup>[80]</sup> evaluated 20 patients at a mean follow up of 29.2 mo. Their average ASES scores were 92.5 and average WOSI scores were 72.7. They reported a recurrence rate of 15% but no range of motion testing was done. Interestingly, in their follow up study of MRIs on separate remplissage patients, they found infraspinatus integration into the humeral footprint at as early as 8 mo. They suggested this incorporation might increase the chances of longer-term success of the procedure<sup>[81]</sup>. In addition, they also reported range of motion testing with a mean external rotation loss of 5.2 degrees.

Wolf *et al.*<sup>[82]</sup> published longer-term results on their original patient series<sup>[78]</sup>. They included 59 patients with up to 10-year follow-up. They found minimal complications and no significant loss of external rotation. Overall their recurrence rate at long term follow up was 4.4% and mean Rowe and Constant scores were 95.0. Despite long-term follow-up, no evaluation for signs of arthritis was done.

More recently, systematic reviews have further compiled recurrence risk after arthroscopic remplissage. Buza *et al.*<sup>[83]</sup> demonstrated low recurrence rates of all eligible studies at 5.4%, with mean external rotation loss of 2.6 degrees. Additionally Rashid *et al.*<sup>[84]</sup> found average remplissage recurrence rate at 4.2% though their overall average external rotation loss was higher at 11.3 degrees.

Overall most of the results demonstrate remplissage

has a low recurrence rates, with minimal complications. Even though most studies found no significant loss in external rotation, the concerns are still present given previous case reports and cadaveric studies<sup>[85,86]</sup>. Additionally, in throwing athletes where less substantial loss of external rotation are tolerated, the implications of this procedure must be discussed extensively with the patient. Despite good short term results, longer term studies are needed to evaluate long term effects, with a focus on glenohumeral arthritis which has been found with the glenoid restoring procedures.

### **Osteochondral allograft transplantation**

Osteochondral allograft has been used for many orthopedic articular procedures. While a majority of the focus has been knee literature, humeral head defects are another area it has proven beneficial. One of the first studies by Miniaci *et al.*<sup>[87]</sup> treated 18 patients with Hill-Sachs lesions of greater than 25%. They used custom matched osteochondral allograft and reported good results with no recurrent instability. As a result they suggested the advantage of the technique is the anatomic reconstruction. Unfortunately there were other risks including: graft resorption, non-union and hardware failure.

Two further case reports by Chapovsky *et al.*<sup>[88]</sup> and Nathan *et al.*<sup>[89]</sup> reviewed two adolescent patients treated with osteochondral allograft reconstruction for large Hill-Sachs lesions. At final follow up, these patients had stable shoulders and no signs of recurrent instability.

A more recent article by Garcia *et al.*<sup>[90]</sup>, looked at outcomes of 19 patients treated with OATs for engaging large Hill-Sachs lesions with a mean follow up 32.1 mo. They reported average WOSI scores of 74.7 but a high recurrence rate of 31.5%. In addition to documenting results of osteochondral allograft, they matched 20 remplissage patients with similar preoperative Hill-Sachs lesions. They reported that remplissage patients had a 50% lower recurrence rate, and after controlling for confounding variables had significantly better WOSI scores. While they concluded OATs procedure is beneficial in this patient population they recommend performing the remplissage procedure for larger Hill-Sachs lesions.

Though limited studies are available osteochondral allograft transplantation is a reasonable alternative for large engaging Hill-Sachs lesions. Concern for graft-associated complications exist, as such further study is needed before true clinical success can be determined.

### **Humeralplasty**

This procedure involves reducing the Hill-Sachs lesion through an anterior humeral window. In theory, by directly restoring the anatomy, this would obviate the need for potential failures such as lack of infraspinatus integration or osteochondral healing. With regards to biomechanics, two recent cadaveric studies have



described such reduction techniques. The first study by Sandmann *et al*<sup>[91]</sup> described a method using balloon humeralplasty to reduce 80% of the lesions. More recently Stachowicz *et al*<sup>[92]</sup> used a similar method of balloon humeralplasty with 99.3% reduction of their Hill-Sachs lesions. Despite their biomechanical success, these studies were done with most of the soft tissue removed making the clinical application less relatable.

Re *et al*<sup>[93]</sup> did one of the few clinical studies; using a bone tamp and an ACL guide to reduce their Hill-Sachs lesions. They performed this technique in 4 patients and reported 12-mo follow up. They had good results with no recurrent instability and no postoperative complications. Despite good reductions, some of these patients did require concomitant Latarjet procedure, making it difficult to discern which procedure improved stability.

A second study by Hart *et al*<sup>[94]</sup> performed humeralplasty in 5 patients with humeral head defects of 30%. Their minimum follow up was 18 mo, with 100% satisfaction at final follow up. They reported no recurrent instability or postoperative complications.

While humeralplasty seems to have the most potential for anatomic reconstruction, limited cases series are available. In addition, this procedure is technically demanding and requires an open approach. Future studies are needed to evaluate longer-term results and possibly develop a minimally invasive method before true clinical application can be considered.

### **Larger hill-sachs lesions and humeral replacement**

Techniques for humeral head defects from 25% to 40% have been discussed. When humeral head lesions approach greater than 40%, humeral resurfacing or traditional hemiarthroplasty has been suggested. Limited studies have evaluated these patients. Pritchett *et al*<sup>[95]</sup> described shoulder replacement results in 4 patients with humeral head defects up to 70% from chronic instability. All patients had good ROWE scores, but overall of range of motion improvement was poor. Despite these results arthroplasty techniques have improved significantly since this study and new implants have shown better longevity. Given the difficulty of dealing with these massive humeral head lesions, replacement still remains the best alternative at this point in time.

## **CONCLUSION**

Anterior bony instability is a difficult pathology to manage and is multifactorial. As previously discussed, glenoid reconstruction is needed for defects greater than 20% to 25%. Multiple studies have shown improving the glenoid arc with a bony reconstruction is significantly better than soft tissues repair alone. Various surgical treatment options exist such as coracoid transfer, tibial autograft, iliac crest autograft,

or osteochondral allograft. Each procedure has its own set of complications but has demonstrated improved recurrence rates in this patient population.

Humeral head lesions have also been identified as a source of instability. Studies have demonstrated that lesion greater than 25%-30% of the humeral head surface require reconstruction. To address these Hill-Sachs lesions, soft tissue, osteochondral allograft or anatomic reduction have been described and demonstrated significant improvement in stability of the shoulder. As bony deficiency of the glenohumeral joint is a common and difficult pathology to treat, surgeons must decide the best treatment based on the individual patient.

## **REFERENCES**

- 1 **Hovelius L**, Augustini BG, Fredin H, Johansson O, Norlin R, Thorling J. Primary anterior dislocation of the shoulder in young patients. A ten-year prospective study. *J Bone Joint Surg Am* 1996; **78**: 1677-1684 [PMID: 8934481]
- 2 **Taylor DC**, Krasinski KL. Adolescent shoulder injuries: consensus and controversies. *J Bone Joint Surg Am* 2009; **91**: 462-473 [PMID: 19181993]
- 3 **Owens BD**, DeBerardino TM, Nelson BJ, Thurman J, Cameron KL, Taylor DC, Uhorchak JM, Arciero RA. Long-term follow-up of acute arthroscopic Bankart repair for initial anterior shoulder dislocations in young athletes. *Am J Sports Med* 2009; **37**: 669-673 [PMID: 19218560 DOI: 10.1177/0363546508328416]
- 4 **Rhee YG**, Cho NS, Cho SH. Traumatic anterior dislocation of the shoulder: factors affecting the progress of the traumatic anterior dislocation. *Clin Orthop Surg* 2009; **1**: 188-193 [PMID: 19956475 DOI: 10.4055/cios.2009.1.4.188]
- 5 **Hovelius L**, Olofsson A, Sandström B, Augustini BG, Krantz L, Fredin H, Tillander B, Skoglund U, Salomonsson B, Nowak J, Sennerby U. Nonoperative treatment of primary anterior shoulder dislocation in patients forty years of age and younger. a prospective twenty-five-year follow-up. *J Bone Joint Surg Am* 2008; **90**: 945-952 [PMID: 18451384 DOI: 10.2106/JBJS.G.00070]
- 6 **Marans HJ**, Angel KR, Schemitsch EH, Wedge JH. The fate of traumatic anterior dislocation of the shoulder in children. *J Bone Joint Surg Am* 1992; **74**: 1242-1244 [PMID: 1400553]
- 7 **Robinson CM**, Dobson RJ. Anterior instability of the shoulder after trauma. *J Bone Joint Surg Br* 2004; **86**: 469-479 [PMID: 15174539 DOI: 10.1302/0301-620X.86B4]
- 8 **Cetik O**, Uslu M, Ozsar BK. The relationship between Hill-Sachs lesion and recurrent anterior shoulder dislocation. *Acta Orthop Belg* 2007; **73**: 175-178 [PMID: 17515227]
- 9 **Kralinger FS**, Golser K, Wischatta R, Wambacher M, Sperner G. Predicting recurrence after primary anterior shoulder dislocation. *Am J Sports Med* 2002; **30**: 116-120 [PMID: 11799007]
- 10 **Taylor DC**, Arciero RA. Pathologic changes associated with shoulder dislocations. Arthroscopic and physical examination findings in first-time, traumatic anterior dislocations. *Am J Sports Med* 1997; **25**: 306-311 [PMID: 9167808 DOI: 10.1177/036354659702500306]
- 11 **Bigliani LU**, Newton PM, Steinmann SP, Connor PM, McIlveen SJ. Glenoid rim lesions associated with recurrent anterior dislocation of the shoulder. *Am J Sports Med* 1998; **26**: 41-45 [PMID: 9474399]
- 12 **Griffith JF**, Antonio GE, Yung PS, Wong EM, Yu AB, Ahuja AT, Chan KM. Prevalence, pattern, and spectrum of glenoid bone loss in anterior shoulder dislocation: CT analysis of 218 patients. *AJR Am J Roentgenol* 2008; **190**: 1247-1254 [PMID: 18430839 DOI: 10.2214/AJR.07.3009]
- 13 **Burkhart SS**, Morgan CD, Kibler WB. Shoulder injuries in overhead athletes. The "dead arm" revisited. *Clin Sports*



- Med* 2000; **19**: 125-158 [PMID: 10652669 DOI: 10.1016/S0278-5919(05)70300-8]
- 14 **Gerber C**, Nyffeler RW. Classification of glenohumeral joint instability. *Clin Orthop Relat Res* 2002; **400**: 65-76 [PMID: 12072747 DOI: 10.1097/00003086-200207000-00009]
  - 15 **Yamamoto N**, Itoi E, Abe H, Minagawa H, Seki N, Shimada Y, Okada K. Contact between the glenoid and the humeral head in abduction, external rotation, and horizontal extension: a new concept of glenoid track. *J Shoulder Elbow Surg* 2007; **16**: 649-656 [PMID: 17644006 DOI: 10.1016/j.jse.2006.12.012]
  - 16 **Mologne TS**, Provencher MT, Menzel KA, Vachon TA, Dewing CB. Arthroscopic stabilization in patients with an inverted pear glenoid: results in patients with bone loss of the anterior glenoid. *Am J Sports Med* 2007; **35**: 1276-1283 [PMID: 17387219 DOI: 10.1177/0363546507300262]
  - 17 **Burkhart SS**, Danaceau SM. Articular arc length mismatch as a cause of failed bankart repair. *Arthroscopy* 2000; **16**: 740-744 [PMID: 11027759 DOI: 10.1053/jars.2000.7794]
  - 18 **Itoi E**, Lee SB, Berglund LJ, Berge LL, An KN. The effect of a glenoid defect on anteroinferior stability of the shoulder after Bankart repair: a cadaveric study. *J Bone Joint Surg Am* 2000; **82**: 35-46 [PMID: 10653082]
  - 19 **Greis PE**, Scuderi MG, Mohr A, Bachus KN, Burks RT. Glenohumeral articular contact areas and pressures following labral and osseous injury to the anteroinferior quadrant of the glenoid. *J Shoulder Elbow Surg* 2002; **11**: 442-451 [PMID: 12378162 DOI: 10.1067/mse.2002.124526]
  - 20 **Yiannakopoulos CK**, Mataragas E, Antonogiannakis E. A comparison of the spectrum of intra-articular lesions in acute and chronic anterior shoulder instability. *Arthroscopy* 2007; **23**: 985-990 [PMID: 17868838 DOI: 10.1016/j.arthro.2007.05.009]
  - 21 **Baker CL**, Uribe JW, Whitman C. Arthroscopic evaluation of acute initial anterior shoulder dislocations. *Am J Sports Med* 1990; **18**: 25-28 [PMID: 2301687 DOI: 10.1177/036354659001800104]
  - 22 **Hill HA**, Sachs MD. The grooved defect of the humeral head: a frequently unrecognized complication of dislocations of the shoulder joint. *Radiology* 1940; **35**: 690-700 [DOI: 10.1148/35.6.690]
  - 23 **Boileau P**, Villalba M, Héry JY, Balg F, Ahrens P, Neyton L. Risk factors for recurrence of shoulder instability after arthroscopic Bankart repair. *J Bone Joint Surg Am* 2006; **88**: 1755-1763 [PMID: 16882898 DOI: 10.2106/JBJS.E.00817]
  - 24 **Burkhart SS**, De Beer JF. Traumatic glenohumeral bone defects and their relationship to failure of arthroscopic Bankart repairs: significance of the inverted-pear glenoid and the humeral engaging Hill-Sachs lesion. *Arthroscopy* 2000; **16**: 677-694 [PMID: 11027751 DOI: 10.1053/jars.2000.17715]
  - 25 **Sekiya JK**, Wickwire AC, Stehle JH, Debski RE. Hill-Sachs defects and repair using osteoarticular allograft transplantation: biomechanical analysis using a joint compression model. *Am J Sports Med* 2009; **37**: 2459-2466 [PMID: 19726622 DOI: 10.1177/0363546509341576]
  - 26 **Sugaya H**, Morishii J, Dohi M, Kon Y, Tsuchiya A. Glenoid rim morphology in recurrent anterior glenohumeral instability. *J Bone Joint Surg Am* 2003; **85-A**: 878-884 [PMID: 12728039]
  - 27 **Richards RD**, Sartoris DJ, Pathria MN, Resnick D. Hill-Sachs lesion and normal humeral groove: MR imaging features allowing their differentiation. *Radiology* 1994; **190**: 665-668 [PMID: 8115607 DOI: 10.1148/radiology.190.3.8115607]
  - 28 **Arciero RA**, Parrino A, Bernhardtson AS, Diaz-Doran V, Obopilwe E, Cote MP, Golijanin P, Mazzocca AD, Provencher MT. The Effect of a Combined Glenoid and Hill-Sachs Defect on Glenohumeral Stability: A Biomechanical Cadaveric Study Using 3-Dimensional Modeling of 142 Patients. *Am J Sports Med* 2015; Epub ahead of print [PMID: 25794869 DOI: 10.1177/0363546515574677]
  - 29 **Warner JJ**, Gill TJ, O'hollerhan JD, Pathare N, Millett PJ. Anatomical glenoid reconstruction for recurrent anterior glenohumeral instability with glenoid deficiency using an autogenous tricortical iliac crest bone graft. *Am J Sports Med* 2006; **34**: 205-212 [PMID: 16303879 DOI: 10.1177/0363546505281798]
  - 30 **Lynch JR**, Clinton JM, Dewing CB, Warme WJ, Matsen FA. Treatment of osseous defects associated with anterior shoulder instability. *J Shoulder Elbow Surg* 2009; **18**: 317-328 [PMID: 19218054 DOI: 10.1016/j.jse.2008.10.013]
  - 31 **Bushnell BD**, Creighton RA, Herring MM. Bony instability of the shoulder. *Arthroscopy* 2008; **24**: 1061-1073 [PMID: 18760215 DOI: 10.1016/j.arthro.2008.05.015]
  - 32 **Bushnell BD**, Creighton RA, Herring MM. The bony apprehension test for instability of the shoulder: a prospective pilot analysis. *Arthroscopy* 2008; **24**: 974-982 [PMID: 18760203 DOI: 10.1016/j.arthro.2008.07.019]
  - 33 **Robinson CM**, Shur N, Sharpe T, Ray A, Murray IR. Injuries associated with traumatic anterior glenohumeral dislocations. *J Bone Joint Surg Am* 2012; **94**: 18-26 [PMID: 22218378 DOI: 10.2106/JBJS.J.01795]
  - 34 **Lazarus MD**, Sidles JA, Harryman DT, Matsen FA. Effect of a chondral-labral defect on glenoid concavity and glenohumeral stability. A cadaveric model. *J Bone Joint Surg Am* 1996; **78**: 94-102 [PMID: 8550685]
  - 35 **Howell SM**, Galinat BJ. The glenoid-labral socket. A constrained articular surface. *Clin Orthop Relat Res* 1989; **(243)**: 122-125 [PMID: 2721051 DOI: 10.1097/00003086-198906000-00018]
  - 36 **Itoi E**, Hatakeyama Y, Kido T, Sato T, Minagawa H, Wakabayashi I, Kobayashi M. A new method of immobilization after traumatic anterior dislocation of the shoulder: a preliminary study. *J Shoulder Elbow Surg* 2003; **12**: 413-415 [PMID: 14564258 DOI: 10.1016/S1058-2746(03)00171-X]
  - 37 **Edwards TB**, Boulahia A, Walch G. Radiographic analysis of bone defects in chronic anterior shoulder instability. *Arthroscopy* 2003; **19**: 732-739 [PMID: 12966381 DOI: 10.1016/S0749-8063(03)00684-4]
  - 38 **Garth WP**, Slappey CE, Ochs CW. Roentgenographic demonstration of instability of the shoulder: the apical oblique projection. A technical note. *J Bone Joint Surg Am* 1984; **66**: 1450-1453 [PMID: 6501340]
  - 39 **Pavlov H**, Warren RF, Weiss CB, Dines DM. The roentgenographic evaluation of anterior shoulder instability. *Clin Orthop Relat Res* 1985; **(194)**: 153-158 [PMID: 3978907 DOI: 10.1097/00003086-198504000-00020]
  - 40 **Rokous JR**, Feagin JA, Abbott HG. Modified axillary roentgenogram. A useful adjunct in the diagnosis of recurrent instability of the shoulder. *Clin Orthop Relat Res* 1972; **82**: 84-86 [PMID: 5011040]
  - 41 **De Beer J**, Burkhart SS, Roberts CP, van Rooyen K, Cresswell T, du Toit DF. The congruent-arc latarjet. *Tech Shoulder Elbow Surg* 2009; **10**: 62-67 [DOI: 10.1097/BTE.0b013e31819ebb60]
  - 42 **Hall RH**, Isaac F, Booth CR. Dislocations of the shoulder with special reference to accompanying small fractures. *J Bone Joint Surg Am* 1959; **41-A**: 489-494 [PMID: 13641300]
  - 43 **Piasecki DP**, Verma NN, Romeo AA, Levine WN, Bach BR, Provencher MT. Glenoid bone deficiency in recurrent anterior shoulder instability: diagnosis and management. *J Am Acad Orthop Surg* 2009; **17**: 482-493 [PMID: 19652030]
  - 44 **Chuang TY**, Adams CR, Burkhart SS. Use of preoperative three-dimensional computed tomography to quantify glenoid bone loss in shoulder instability. *Arthroscopy* 2008; **24**: 376-382 [PMID: 18375267 DOI: 10.1016/j.arthro.2008.04.009]
  - 45 **Huysmans PE**, Haen PS, Kidd M, Dhert WJ, Willems JW. The shape of the inferior part of the glenoid: a cadaveric study. *J Shoulder Elbow Surg* 2006; **15**: 759-763 [PMID: 16990019 DOI: 10.1016/j.jse.2005.09.001]
  - 46 **Montgomery WH**, Wahl M, Hettrich C, Itoi E, Lippitt SB, Matsen FA. Anteroinferior bone-grafting can restore stability in osseous glenoid defects. *J Bone Joint Surg Am* 2005; **87**: 1972-1977 [PMID: 16140811 DOI: 10.2106/JBJS.D.02573]
  - 47 **Murphy DT**, Koulouris GC, Gopez AG, Kavanagh EC. Humeral avulsion of the glenohumeral ligament. *AJR Am J Roentgenol* 2009; **193**: W74-W75; author reply W76 [PMID: 19542388 DOI: 10.2214/AJR.08.2228]
  - 48 **Burkhart SS**, Debeer JF, Tehrany AM, Parten PM. Quantifying

- glenoid bone loss arthroscopically in shoulder instability. *Arthroscopy* 2002; **18**: 488-491 [PMID: 11987058 DOI: 10.1053/jars.2002.32212]
- 49 **Burkhart SS.** The bare spot of the glenoid. *Arthroscopy* 2007; **23**: 449; author reply 449-450 [PMID: 17418348 DOI: 10.1016/j.arthro.2006.12.018]
  - 50 **Lo IK, Parten PM, Burkhart SS.** The inverted pear glenoid: an indicator of significant glenoid bone loss. *Arthroscopy* 2004; **20**: 169-174 [PMID: 14760350 DOI: 10.1016/j.arthro.2003.11.036]
  - 51 **Fabbriciani C, Milano G, Demontis A, Fadda S, Ziranu F, Mulas PD.** Arthroscopic versus open treatment of Bankart lesion of the shoulder: a prospective randomized study. *Arthroscopy* 2004; **20**: 456-462 [PMID: 15122134 DOI: 10.1016/j.arthro.2004.03.001]
  - 52 **Harris JD, Gupta AK, Mall NA, Abrams GD, McCormick FM, Cole BJ, Bach BR, Romeo AA, Verma NN.** Long-term outcomes after Bankart shoulder stabilization. *Arthroscopy* 2013; **29**: 920-933 [PMID: 23395467 DOI: 10.1016/j.arthro.2012.11.010]
  - 53 **Mohtadi NG, Chan DS, Hollinshead RM, Boorman RS, Hiemstra LA, Lo IK, Hannaford HN, Fredine J, Sasyniuk TM, Paolucci EO.** A randomized clinical trial comparing open and arthroscopic stabilization for recurrent traumatic anterior shoulder instability: two-year follow-up with disease-specific quality-of-life outcomes. *J Bone Joint Surg Am* 2014; **96**: 353-360 [PMID: 24599195 DOI: 10.2106/JBJS.L.01656]
  - 54 **Chen L, Xu Z, Peng J, Xing F, Wang H, Xiang Z.** Effectiveness and safety of arthroscopic versus open Bankart repair for recurrent anterior shoulder dislocation: a meta-analysis of clinical trial data. *Arch Orthop Trauma Surg* 2015; **135**: 529-538 [PMID: 25743570 DOI: 10.1007/s00402-015-2175-0]
  - 55 **Park JY, Lee SJ, Lhee SH, Lee SH.** Follow-up computed tomography arthrographic evaluation of bony Bankart lesions after arthroscopic repair. *Arthroscopy* 2012; **28**: 465-473 [PMID: 22265046 DOI: 10.1016/j.arthro.2011.09.008]
  - 56 **Helfet AJ.** Coracoid transplantation for recurring dislocation of the shoulder. *J Bone Joint Surg Br* 1958; **40-B**: 198-202 [PMID: 13539102]
  - 57 **Hovelius L, Sandström B, Saebö M.** One hundred eighteen Bristow-Latarjet repairs for recurrent anterior dislocation of the shoulder prospectively followed for fifteen years: study II-the evolution of dislocation arthropathy. *J Shoulder Elbow Surg* 2006; **15**: 279-289 [PMID: 16679226 DOI: 10.1016/j.jse.2005.09.014]
  - 58 **Schroder DT, Provencher MT, Mologne TS, Muldoon MP, Cox JS.** The modified Bristow procedure for anterior shoulder instability: 26-year outcomes in Naval Academy midshipmen. *Am J Sports Med* 2006; **34**: 778-786 [PMID: 16399933 DOI: 10.1177/0363546505282618]
  - 59 **Yamashita T, Okamura K, Hotta T, Wada T, Aoki M, Ishii S.** Good clinical outcome of combined Bankart-Bristow procedure for recurrent shoulder instability: 126 patients followed for 2-6 years. *Acta Orthop Scand* 2002; **73**: 553-557 [PMID: 12440499 DOI: 10.1080/000164702321022839]
  - 60 **Latarjet M.** [Treatment of recurrent dislocation of the shoulder]. *Lyon Chir* 2002; **49**: 994-997 [PMID: 13234709]
  - 61 **Giles JW, Degen RM, Johnson JA, Athwal GS.** The Bristow and Latarjet procedures: why these techniques should not be considered synonymous. *J Bone Joint Surg Am* 2014; **96**: 1340-1348 [PMID: 25143494 DOI: 10.2106/JBJS.M.00627]
  - 62 **Young AA, Maia R, Berhouet J, Walch G.** Open Latarjet procedure for management of bone loss in anterior instability of the glenohumeral joint. *J Shoulder Elbow Surg* 2011; **20**: S61-S69 [PMID: 21145262 DOI: 10.1016/j.jse.2010.07.022]
  - 63 **Allain J, Goutallier D, Glorion C.** Long-term results of the Latarjet procedure for the treatment of anterior instability of the shoulder. *J Bone Joint Surg Am* 1998; **80**: 841-852 [PMID: 9655102]
  - 64 **Mizuno N, Denard PJ, Raiss P, Melis B, Walch G.** Long-term results of the Latarjet procedure for anterior instability of the shoulder. *J Shoulder Elbow Surg* 2014; **23**: 1691-1699 [PMID: 24835298 DOI: 10.1016/j.jse.2014.02.015]
  - 65 **Burkhart SS, De Beer JF, Barth JR, Cresswell T, Roberts C, Richards DP.** Results of modified Latarjet reconstruction in patients with anteroinferior instability and significant bone loss. *Arthroscopy* 2007; **23**: 1033-1041 [PMID: 17916467 DOI: 10.1016/j.arthro.2007.08.009]
  - 66 **Dumont GD, Fogerty S, Rosso C, Lafosse L.** The arthroscopic Latarjet procedure for anterior shoulder instability: 5-year minimum follow-up. *Am J Sports Med* 2014; **42**: 2560-2566 [PMID: 25117728 DOI: 10.1177/0363546514544682]
  - 67 **Boileau P, Thélou CÉ, Mercier N, Ohl X, Houghton-Clemmey R, Carles M, Trojani C.** Arthroscopic Bristow-Latarjet combined with bankart repair restores shoulder stability in patients with glenoid bone loss. *Clin Orthop Relat Res* 2014; **472**: 2413-2424 [PMID: 24942959 DOI: 10.1007/s11999-014-3691-x]
  - 68 **Hindmarsh J, Lindberg A.** Eden-Hybbinette's operation for recurrent dislocation of the humero-scapular joint. *Acta Orthop Scand* 1967; **38**: 459-478 [PMID: 4876082 DOI: 10.3109/17453676708989654]
  - 69 **Provencher MT, Ghodadra N, LeClere L, Solomon DJ, Romeo AA.** Anatomic osteochondral glenoid reconstruction for recurrent glenohumeral instability with glenoid deficiency using a distal tibia allograft. *Arthroscopy* 2009; **25**: 446-452 [PMID: 19341934 DOI: 10.1016/j.arthro.2008.10.017]
  - 70 **Weng PW, Shen HC, Lee HH, Wu SS, Lee CH.** Open reconstruction of large bony glenoid erosion with allogeneic bone graft for recurrent anterior shoulder dislocation. *Am J Sports Med* 2009; **37**: 1792-1797 [PMID: 19483076 DOI: 10.1177/0363546509334590]
  - 71 **Scheibel M, Nikulka C, Dick A, Schroeder RJ, Gerber Popp A, Haas NP.** Autogenous bone grafting for chronic anteroinferior glenoid defects via a complete subscapularis tenotomy approach. *Arch Orthop Trauma Surg* 2008; **128**: 1317-1325 [PMID: 18196255 DOI: 10.1007/s00402-007-0560-z]
  - 72 **Auffarth A, Schauer J, Matis N, Kofler B, Hitzl W, Resch H.** The J-bone graft for anatomical glenoid reconstruction in recurrent posttraumatic anterior shoulder dislocation. *Am J Sports Med* 2008; **36**: 638-647 [PMID: 18006673 DOI: 10.1177/0363546507309672]
  - 73 **Rahme H, Wikblad L, Nowak J, Larsson S.** Long-term clinical and radiologic results after Eden-Hybbinette operation for anterior instability of the shoulder. *J Shoulder Elbow Surg* 2003; **12**: 15-19 [PMID: 12610480 DOI: 10.1067/mse.2002.128138]
  - 74 **Lunn JV, Castellano-Rosa J, Walch G.** Recurrent anterior dislocation after the Latarjet procedure: outcome after revision using a modified Eden-Hybinette operation. *J Shoulder Elbow Surg* 2008; **17**: 744-750 [PMID: 18619868 DOI: 10.1016/j.jse.2008.03.002]
  - 75 **Palmer I, Widen A.** The bone block method for recurrent dislocation of the shoulder joint. *J Bone Joint Surg Br* 1948; **30B**: 53-58 [PMID: 18864946]
  - 76 **Bollier MJ, Arciero R.** Management of glenoid and humeral bone loss. *Sports Med Arthrosc* 2010; **18**: 140-148 [PMID: 20711045 DOI: 10.1097/JSA.0b013e3181e88ef9]
  - 77 **Kropf EJ, Sekiya JK.** Osteoarticular allograft transplantation for large humeral head defects in glenohumeral instability. *Arthroscopy* 2007; **23**: 322.e1-322.e5 [PMID: 17349479 DOI: 10.1016/j.arthro.2006.07.032]
  - 78 **Purchase RJ, Wolf EM, Hobgood ER, Pollock ME, Smalley CC.** Hill-sachs "remplissage": an arthroscopic solution for the engaging hill-sachs lesion. *Arthroscopy* 2008; **24**: 723-726 [PMID: 18514117 DOI: 10.1016/j.arthro.2008.03.015]
  - 79 **Boileau P, O'Shea K, Vargas P, Pinedo M, Old J, Zumstein M.** Anatomical and functional results after arthroscopic Hill-Sachs remplissage. *J Bone Joint Surg Am* 2012; **94**: 618-626 [PMID: 22488618 DOI: 10.2106/JBJS.K.00101]
  - 80 **Park MJ, Tjoumakaris FP, Garcia G, Patel A, Kelly JD.** Arthroscopic remplissage with Bankart repair for the treatment of glenohumeral instability with Hill-Sachs defects. *Arthroscopy* 2011; **27**: 1187-1194 [PMID: 21820842 DOI: 10.1016/j.arthro.2011.05.010]
  - 81 **Park MJ, Garcia G, Malhotra A, Major N, Tjoumakaris FP, Kelly JD.** The evaluation of arthroscopic remplissage by high-resolution magnetic resonance imaging. *Am J Sports Med* 2012; **40**: 2331-2336 [PMID: 22915480 DOI: 10.1177/0363546512456974]
  - 82 **Wolf EM, Arianjam A.** Hill-Sachs remplissage, an arthroscopic

- solution for the engaging Hill-Sachs lesion: 2- to 10-year follow-up and incidence of recurrence. *J Shoulder Elbow Surg* 2014; **23**: 814-820 [PMID: 24295834 DOI: 10.1016/j.jse.2013.09.009]
- 83 **Buza JA**, Iyengar JJ, Anakwenze OA, Ahmad CS, Levine WN. Arthroscopic Hill-Sachs remplissage: a systematic review. *J Bone Joint Surg Am* 2014; **96**: 549-555 [PMID: 24695921 DOI: 10.2106/JBJS.L.01760]
- 84 **Rashid MS**, Crichton J, Butt U, Akimau PI, Charalambous CP. Arthroscopic "Remplissage" for shoulder instability: a systematic review. *Knee Surg Sports Traumatol Arthrosc* 2014; Epub ahead of print [PMID: 24497056 DOI: 10.1007/s00167-014-2881-0]
- 85 **Deutsch AA**, Kroll DG. Decreased range of motion following arthroscopic remplissage. *Orthopedics* 2008; **31**: 492 [PMID: 19292311 DOI: 10.3928/01477447-20080501-07]
- 86 **Omi R**, Hooke AW, Zhao KD, Matsuhashi T, Goto A, Yamamoto N, Sperling JW, Steinmann SP, Itoi E, An KN. The effect of the remplissage procedure on shoulder range of motion: a cadaveric study. *Arthroscopy* 2014; **30**: 178-187 [PMID: 24388452 DOI: 10.1016/j.arthro.2013.11.003]
- 87 **Miniaci A**, Gish MW. (2004) Management of anterior glenohumeral instability associated with large Hill-Sachs defects. *Tech Shoulder Elbow Surg* 2004; **5**: 170-175 [DOI: 10.1097/01.bte.0000137216.70574.ba]
- 88 **Chapovsky F**, Kelly JD. Osteochondral allograft transplantation for treatment of glenohumeral instability. *Arthroscopy* 2005; **21**: 1007 [PMID: 16086562 DOI: 10.1016/j.arthro.2005.04.005]
- 89 **Nathan ST**, Parikh SN. Osteoarticular allograft reconstruction for hill-sachs lesion in an adolescent. *Orthopedics* 2012; **35**: e744-e747 [PMID: 22588420 DOI: 10.3928/01477447-20120426-33]
- 90 **Garcia GH**, Park MJ, Baldwin K, Fowler J, Kelly JD, Tjoumakaris FP. Comparison of arthroscopic osteochondral substitute grafting and remplissage for engaging Hill-Sachs lesions. *Orthopedics* 2013; **36**: e38-e43 [PMID: 23276350 DOI: 10.3928/01477447-20121217-16]
- 91 **Sandmann GH**, Ahrens P, Schaeffeler C, Bauer JS, Kirchhoff C, Martetschlager F, Müller D, Siebenlist S, Biberthaler P, Stöckle U, Freude T. Balloon osteoplasty--a new technique for minimally invasive reduction and stabilisation of Hill-Sachs lesions of the humeral head: a cadaver study. *Int Orthop* 2012; **36**: 2287-2291 [PMID: 22918409]
- 92 **Stachowicz RZ**, Romanowski JR, Wissman R, Kenter K. Percutaneous balloon humeroplasty for Hill-Sachs lesions: a novel technique. *J Shoulder Elbow Surg* 2013; **22**: e7-13 [PMID: 23473608 DOI: 10.1016/j.jse.2012.12.035]
- 93 **Re P**, Gallo RA, Richmond JC. Transhumeral head plasty for large Hill-Sachs lesions. *Arthroscopy* 2006; **22**: 798.e1-798.e4 [PMID: 16848061 DOI: 10.1016/j.arthro.2005.12.038]
- 94 **Hart R**, Okál F, Komzák M. [Transhumeral head plasty and massive osteocartilaginous allograft transplantation for the management of large hill-sachs lesions]. *Acta Chir Orthop Traumatol Cech* 2010; **77**: 402-410 [PMID: 21040652]
- 95 **Pritchett JW**, Clark JM. Prosthetic replacement for chronic unreduced dislocations of the shoulder. *Clin Orthop Relat Res* 1987; **216**: 89-93 [PMID: 3815975]

**P- Reviewer:** Bicanic G, Lee KH, Makishima M, Patra SR, Saithna A

**S- Editor:** Ji FF **L- Editor:** A **E- Editor:** Zhang DN



## Neuromuscular control and rehabilitation of the unstable ankle

You-jou Hung

You-jou Hung, Department of Physical Therapy, Angelo State University, San Angelo, TX 76909, United States

**Author contributions:** Hung Y contributes to the entire manuscript.

**Conflict-of-interest:** No potential conflict-of-interest relevant to the manuscript.

**Open-Access:** This article is an open-access article which was selected by an in-house editor and fully peer-reviewed by external reviewers. It is distributed in accordance with the Creative Commons Attribution Non Commercial (CC BY-NC 4.0) license, which permits others to distribute, remix, adapt, build upon this work non-commercially, and license their derivative works on different terms, provided the original work is properly cited and the use is non-commercial. See: <http://creativecommons.org/licenses/by-nc/4.0/>

**Correspondence to:** You-jou Hung, PT, MS, PhD, CSCS, Department of Physical Therapy, Angelo State University, 2601 W Ave N, San Angelo, TX 76909,

United States. [you-jou.hung@angelo.edu](mailto:you-jou.hung@angelo.edu)

Telephone: +1-325-9422742

Fax: +1-325-9422548

Received: February 20, 2015

Peer-review started: February 22, 2015

First decision: April 10, 2015

Revised: April 21, 2015

Accepted: May 8, 2015

Article in press: May 11, 2015

Published online: June 18, 2015

### Abstract

Lateral ankle sprain is a common orthopedic injury with a very high recurrence rate in athletes. After decades of research, it is still unclear what contributes to the high recurrence rate of ankle sprain, and what is the most effective intervention to reduce the incident of initial and recurrent injuries. In addition, clinicians often implement balance training as part of the rehabilitation protocol in hopes of enhancing the neuromuscular control and proprioception of the ankle joint. However, there is no consensus on whether the neuromuscular control and proprioception are compromised in unstable

ankles. To reduce the prevalence of ankle sprains, the effectiveness of engaging balance training to enhance the neuromuscular control and proprioception of the ankle joint is also questionable.

**Key words:** Ankle; Proprioception; Neuromuscular control; Physical therapy; Rehabilitation

© **The Author(s) 2015.** Published by Baishideng Publishing Group Inc. All rights reserved.

**Core tip:** Lateral ankle sprain is a common orthopedic injury with a high recurrence rate. However, there is no consensus on whether neuromuscular control and proprioception are compromised in unstable ankles, and whether proprioception training can reduce initial and recurrent ankle injuries. The purpose of this review is to discuss the etiology and intervention of initial and recurrent ankle sprains, focusing on the role of neuromuscular control and proprioception at the ankle joint. This review can provide clinicians the knowledge of constructing better examination protocols and rehabilitation programs for individuals with the unstable ankle.

Hung Y. Neuromuscular control and rehabilitation of the unstable ankle. *World J Orthop* 2015; 6(5): 434-438 Available from: URL: <http://www.wjgnet.com/2218-5836/full/v6/i5/434.htm> DOI: <http://dx.doi.org/10.5312/wjo.v6.i5.434>

### INTRODUCTION

Ankle sprains are among the most common musculoskeletal injuries with an estimated 23000 accidents occur daily in the United States<sup>[1]</sup>. Ankle sprains constitute up to 45% in sports related injuries<sup>[2]</sup>, and basketball players are more vulnerable to ankle sprains (41.1% prevalence) than other athletes<sup>[3]</sup>. The



terminology of “sprain” indicates that the structural integrity of the ligament, which functions as a joint stabilizer, has been compromised. For the ankle joint, the ligaments on the lateral portion of the ankle (especially the anterior talo-fibular ligament) are most vulnerable to injuries. Lateral ankle sprains are likely the result of a fast combined motion of ankle plantar flexion and inversion, and such motion can occur when an individual lands on an uneven surface with a single limb<sup>[4]</sup>. It was reported that lateral ankle sprain comprises up to 83% of ankle injuries<sup>[5]</sup>.

After the initial ankle sprain, mechanical restraints (e.g., injured ligaments, joint capsule), muscle strength, and/or neuromuscular control (e.g., proprioception deficits) may be compromised at the ankle joint<sup>[6-18]</sup>. As the result, 73% of the individuals who had sprained their ankles before are likely to experience recurrent injuries<sup>[19]</sup>. Despite decades of research on ankle sprain, is it unclear if compromised neuromuscular control and proprioception of the ankle joint contributes to initial and/or recurrent ankle sprains. Moreover, it is also unclear if neuromuscular training is effective in reducing the incidents of initial and/or recurrent ankle injuries.

Proprioception is an important element of the neuromuscular control. With proper proprioception, one may be able to timely detect the speed and magnitude of perturbation and react with proper muscle activation and joint motion. It is inconclusive if subjects with ankle instability experience proprioception deficits, and there is no standard testing and training protocols for ankle proprioception. The aim of this review is to discuss neuromuscular control and proprioception of the ankle joint, their potential deficits in unstable ankles, and the effectiveness of incorporating neuromuscular control training as part of the rehabilitation program.

## INITIAL ANKLE SPRAIN

The ankle (talocrural) joint stability is achieved by weight loading on the bony structures (osseous congruity), proper activation of active stabilizers (muscles and their tendons), and maintaining the integrity of passive stabilizers (ligaments and joint capsule). The ankle joint reaches a stable position (closed packed position) with maximal dorsiflexion, and it becomes more unstable (subject to greater inversion) with plantar flexion. At its most vulnerable position (plantar flexion with inversion) for lateral ankle sprain, the 3 lateral ligaments (anterior talo-fibular ligament, calcaneo-fibular ligament, and posterior talo-fibular ligament) play the primary stabilization role at the ankle joint<sup>[20]</sup>. As a passive stabilizer, one cannot voluntarily tighten the ligament. Although ligament strength could be enhanced through proper loading and exercise, strength improvement in ligaments is very limited<sup>[21]</sup>.

Neuromuscular control encompasses both reflexes and voluntary muscle responses. For reflex responses, sudden muscle length changes and the speed of

changes would be detected by the muscle spindles of those stretched muscles (e.g., peroneal muscles) during a sudden ankle inversion perturbation. A short latency/loop response (spinal reflex) would be elicited with a result of muscle activation at the stretched muscle. Meanwhile, information from the muscle spindles would also travel up to the supraspinal center, processed, and then the action potential would travel back to the stretched muscles (e.g., peroneal muscles, tibialis anterior) to elicit a long latency response. The short latency response is typically fast enough but not powerful enough to correct a fast and large perturbation. In contrast, the long latency response could be powerful enough but is too slow to prevent injuries. The differences between short and long latency responses was demonstrated by Konradsen *et al*<sup>[22]</sup> with 10 healthy volunteers participated in their study. Standing on a custom platform with a secret trap door underneath the examined ankle, the trap door was able to tilt 30° in the frontal plane and provide a sudden ankle inversion perturbation to the subject. They found the initial peroneal muscle reflex response started around 54 ms post stretch (short latency response), but the muscle activation was too weak to correct the perturbation<sup>[22]</sup>. The subject was not able to generate enough peroneal force to evert the ankle back until 176 ms after stretch (long latency response), which is significantly later than the estimated time frame (less than 100 ms post stretch) when a ligament injury would occur.

Proprioceptive information includes the position sense and movement sense (kinesthesia) of a joint. The ascending information from muscles (muscle spindles), tendons (Golgi Tendon Organs), and other mechanoreceptors located in skin, capsule, and ligaments can be used by the central nervous system to construct meaningful voluntary movements or to correct perturbations<sup>[23]</sup>. However, the reaction time of the voluntary movement is similar or larger than the long latency reflex<sup>[23]</sup>, therefore too slow to prevent ankle sprains. In summary, interventions (e.g., balance training) aim to enhance neuromuscular control and proprioception of an intact ankle may not reduce the incidents of future ankle injuries.

## RECURRENT ANKLE SPRAIN

Because lateral ligaments (especially the anterior talo-fibular ligament) of the ankle joint play the primary role in ankle stability<sup>[20]</sup>, compromised ligaments integrity after the initial injury (e.g., ligament sprain, tear) can contribute to recurrent injuries. After the initial injury, the reparative phase may last for 3-6 wk and the remodel phase may last for more than a year after the injury. Moreover, only 50% to 85% of subjects with a prior ankle sprain reported full recovery 3 years after the initial injury<sup>[24]</sup>. If an individual returns to the same activity level or sports prior to a full recovery, recurrent ankle sprains are almost

inevitable.

It is suggested that altered neuromuscular control due to peripheral proprioception changes of the ankle joint may contribute to the high recurrence rate of lateral ankle sprain<sup>[8,11,12,14-18,25]</sup>. After the initial injury, overstretched/loosened ligaments and joint capsule may hamper the function of those mechanoreceptors in those structures. Some researchers reported prolonged peroneal muscle reflex latency in injured ankles<sup>[26-28]</sup>, and others reported ankle position sense deficits in passive testing<sup>[8,12,29,30]</sup> and active testing protocols<sup>[12,15,29]</sup>. Moreover, it is indicated that the result of position sense testing (active matching of passive positioning) can be used to predict future ankle injuries<sup>[14,31]</sup>.

Despite the previously described evidence that indicates proprioception changes in unstable ankles, there are also many studies that contradict those findings. No peroneal reflex latency difference<sup>[32-34]</sup>, no position sense difference<sup>[35-37]</sup>, and no movement sense (kinesthesia) difference<sup>[10]</sup> was found between healthy and unstable ankles. In addition, some studies indicate that the condition of ankle position sense is not a good predictor for future ankle sprains<sup>[13,38]</sup>. Moreover, Witchalls *et al*<sup>[39]</sup> used the Active Movement Extent Discrimination Apparatus (AMEDA) to compare ankle position sense and its improvement potential between healthy subjects and individuals with chronic ankle instability. With the AMEDA, their subjects were tested in a standing position with normal weight bearing and active control of their ankle joints, therefore with a better clinical and functional significance. They found no position sense difference between the two groups at their initial testing, but the individuals with ankle instability improved their scores less than healthy controls after repeated testing. Although it is unclear if subjects with unstable ankles exhibit position sense or movement sense deficits after the initial injury, as discussion in the prior section, the integrity of ankle proprioception may not play an important role in ankle stability against large and fast perturbations. Even with intact ankle proprioception, the short latency response (stretch reflex) would be too weak and the long latency reflex and voluntary muscle activation would be too slow to combat large and fast perturbations.

## REHABILITATION FOR ANKLE SPRAIN

After decades of research, it is still unclear on what training technique/rehabilitation protocol is most effective in reducing the incidents of initial ankle sprains and recurrent injuries. Because proper proprioceptive information is an important part of the overall neuromuscular control, one might consider restoring the compromised proprioception may improve ankle stability. In order to improve ankle proprioception, it is essential to increase the sensitivity of mechanoreceptors by tightening up ligaments and joint capsules (enhance joint proprioceptors) and/or

increase muscle activation (enhance muscle spindles). Without surgically tightening up the stretched/loosened ligaments and joint capsule, increasing muscle activation to sensitize muscle spindles through alpha-gamma co-activation could be a reasonable approach. However, even with better/intact proprioception at the ankle joint, one still cannot generate enough muscle strength that is fast enough to combat large and fast perturbations such as landing on an uneven surface.

The impact of muscle strength on ankle stability is unclear. Muscle weakness was reported in peroneal muscles<sup>[15,40,41]</sup>, ankle dorsiflexors<sup>[38]</sup>, and hip abductors<sup>[42]</sup> in individuals with ankle instability. However, other studies found no association between muscle weakness and ankle instability<sup>[14,37,43,44]</sup>. Although larger muscle activation can enhance the sensitivity of muscle spindles, strength training is not likely to reduce the incidents of initial and recurrent ankle sprains through enhancing neuromuscular control of the ankle joint. Instead, strength training may restore ankle muscle balance, position the ankle in more stable position (e.g., more dorsiflexion with a stronger tibialis anterior), increase the strength of ligaments, and a larger/stronger muscle can also provide additional passive restraints to the ankle joint. Further research is needed to examine the impact of strength training on ankle stability.

Balance/postural training is the most commonly employed rehabilitation treatment for individuals with ankle instability. The majority of the literature reports positive therapeutic effects of balance training (e.g., single limb standing, standing on an ankle disc/wobble board)<sup>[29,45-55]</sup>. However, there are a few studies that disagree with its treatment effect<sup>[56,57]</sup>. In the "Clinical Practice Guidelines" published in the *Journal of Orthopaedic and Sports Physical Therapy*, a panel of experts also concluded that the evidence is weak (grade of recommendation "C") on implementing weight-bearing functional exercises and balance activities on unstable surfaces<sup>[18]</sup>. If balance training is beneficial in reducing the incidents of ankle sprains, it is not likely due to enhanced neuromuscular control, but due to enhanced strength and stiffness in both muscles and ligaments at the ankle joint.

## CONCLUSION

Initial and recurrent ankle sprains are a serious problem for athletes. After decades of research, there is still no consensus on the most effect intervention to reduce the incidents of initial and recurrent ankle sprains. Although passive ankle stabilizers such as ligaments provide the primary stability to the ankle joint, one cannot actively control the ligaments and their strength increment potential is limited. On the other hand, neuromuscular training has the potential to improve the latency and magnitude of muscle response of the long latency reflex and voluntary muscle activation. Such "reactive" responses can be

sped up slightly through neuromuscular training, but it is very unlikely to be fast enough to prevent injuries caused by a fast and large perturbation such as landing on an uneven surface with a single limb.

Balance training, neuromuscular training, and proprioception training are just a few terminologies that clinicians often use interchangeably to describe balance activities such as single leg standing and standing on an uneven surface such as a wobble board. It is important to know that improving neuromuscular control and proprioception of an ankle joint may yield little benefits in improving ankle stability against large and fast perturbations. However, balance training can also increase the strength of muscles and ligaments around the ankle joint. Since ligaments are the primary stabilizer of the ankle joint, treatment protocols with a balance training component may benefit the subjects with unstable ankles.

If a healthy ankle could not resist the fast and large perturbation during the initial injury, those compromised structures after an ankle sprain certainly would not be able to resist the same amount of stress without a full recovery. Most athletes did not wait for a year or longer (towards the end of the remodeling phase) before returning to their prior sports/activities. Therefore, it would be extremely difficult to reduce the incidents of recurrent ankle sprains in athletes.

## REFERENCES

- Kannus P**, Renström P. Treatment for acute tears of the lateral ligaments of the ankle. Operation, cast, or early controlled mobilization. *J Bone Joint Surg Am* 1991; **73**: 305-312 [PMID: 1993726]
- Farrer C**, Franck N, Paillard J, Jeannerod M. The role of proprioception in action recognition. *Conscious Cogn* 2003; **12**: 609-619 [PMID: 14656504 DOI: 10.1016/S1053-8100(03)00047-3]
- Waterman BR**, Owens BD, Davey S, Zacchilli MA, Belmont PJ. The epidemiology of ankle sprains in the United States. *J Bone Joint Surg Am* 2010; **92**: 2279-2284 [PMID: 20926721 DOI: 10.2106/JBJS.I.01537]
- Ekstrand J**, Topp H. The incidence of ankle sprains in soccer. *Foot Ankle* 1990; **11**: 41-44 [PMID: 2210532 DOI: 10.1177/107110079001100108]
- Fong DT**, Hong Y, Chan LK, Yung PS, Chan KM. A systematic review on ankle injury and ankle sprain in sports. *Sports Med* 2007; **37**: 73-94 [PMID: 17190537 DOI: 10.2165/00007256-200737010-00006]
- Akbari M**, Karimi H, Farahini H, Faghihzadeh S. Balance problems after unilateral lateral ankle sprains. *J Rehabil Res Dev* 2006; **43**: 819-824 [PMID: 17436168 DOI: 10.1682/JRRD.2006.01.0001]
- Arnold BL**, De La Motte S, Linens S, Ross SE. Ankle instability is associated with balance impairments: a meta-analysis. *Med Sci Sports Exerc* 2009; **41**: 1048-1062 [PMID: 19346982 DOI: 10.1249/MSS.0b013e318192d044]
- Fu AS**, Hui-Chan CW. Ankle joint proprioception and postural control in basketball players with bilateral ankle sprains. *Am J Sports Med* 2005; **33**: 1174-1182 [PMID: 16000667 DOI: 10.1177/0363546504271976]
- Freeman MA**, Dean MR, Hanham IW. The etiology and prevention of functional instability of the foot. *J Bone Joint Surg Br* 1965; **47**: 678-685 [PMID: 5846767]
- de Noronha M**, Refshauge KM, Kilbreath SL, Crosbie J. Loss of proprioception or motor control is not related to functional ankle instability: an observational study. *Aust J Physiother* 2007; **53**: 193-198 [PMID: 17725477 DOI: 10.1016/S0004-9514(07)70027-2]
- McKeon JM**, McKeon PO. Evaluation of joint position recognition measurement variables associated with chronic ankle instability: a meta-analysis. *J Athl Train* 2012; **47**: 444-456 [PMID: 22889661 DOI: 10.4085/1062-6050-47.4.15]
- Munn J**, Sullivan SJ, Schneiders AG. Evidence of sensorimotor deficits in functional ankle instability: a systematic review with meta-analysis. *J Sci Med Sport* 2010; **13**: 2-12 [PMID: 19442581 DOI: 10.1016/j.jsams.2009.03.004]
- de Noronha M**, Refshauge KM, Herbert RD, Kilbreath SL, Hertel J. Do voluntary strength, proprioception, range of motion, or postural sway predict occurrence of lateral ankle sprain? *Br J Sports Med* 2006; **40**: 824-828; discussion 828 [PMID: 16920769 DOI: 10.1136/bjsm.2006.029645]
- Payne KA**, Berg K, Latin RW. Ankle injuries and ankle strength, flexibility, and proprioception in college basketball players. *J Athl Train* 1997; **32**: 221-225 [PMID: 16558453]
- Willems T**, Witvrouw E, Verstuyft J, Vaes P, De Clercq D. Proprioception and Muscle Strength in Subjects With a History of Ankle Sprains and Chronic Instability. *J Athl Train* 2002; **37**: 487-493 [PMID: 12937572]
- Witchalls J**, Waddington G, Blanch P, Adams R. Ankle instability effects on joint position sense when stepping across the active movement extent discrimination apparatus. *J Athl Train* 2012; **47**: 627-634 [PMID: 23182010 DOI: 10.4085/1062-6050-47.6.12]
- Refshauge KM**, Kilbreath SL, Raymond J. Deficits in detection of inversion and eversion movements among subjects with recurrent ankle sprains. *J Orthop Sports Phys Ther* 2003; **33**: 166-173; discussion 173-176 [PMID: 12723673 DOI: 10.2519/jospt.2003.33.4.166]
- Martin RL**, Davenport TE, Paulseth S, Wukich DK, Godges JJ. Ankle stability and movement coordination impairments: ankle ligament sprains. *J Orthop Sports Phys Ther* 2013; **43**: A1-40 [PMID: 24313720 DOI: 10.2519/jospt.2013.0305]
- Yeung MS**, Chan KM, So CH, Yuan WY. An epidemiological survey on ankle sprain. *Br J Sports Med* 1994; **28**: 112-116 [PMID: 7921910 DOI: 10.1136/bjsm.28.2.112]
- van den Bekerom MP**, Oostra RJ, Golanó P, van Dijk CN. The anatomy in relation to injury of the lateral collateral ligaments of the ankle: a current concepts review. *Clin Anat* 2008; **21**: 619-626 [PMID: 18773471 DOI: 10.1002/ca.20703]
- Woo SL**, Gomez MA, Sites TJ, Newton PO, Orlando CA, Akeson WH. The biomechanical and morphological changes in the medial collateral ligament of the rabbit after immobilization and remobilization. *J Bone Joint Surg Am* 1987; **69**: 1200-1211 [PMID: 3667649]
- Konradsen L**, Voigt M, Højsgaard C. Ankle inversion injuries. The role of the dynamic defense mechanism. *Am J Sports Med* 1997; **25**: 54-58 [PMID: 9006692 DOI: 10.1177/036354659702500110]
- Kandel ER**. Principles of neural science. 5th ed. New York: McGraw-Hill, 2013
- van Rijn RM**, van Os AG, Bernsen RM, Luijsterburg PA, Koes BW, Bierma-Zeinstra SM. What is the clinical course of acute ankle sprains? A systematic literature review. *Am J Med* 2008; **121**: 324-331.e6 [PMID: 18374692 DOI: 10.1016/j.amjmed.2007.11.018]
- Takebayashi T**, Yamashita T, Minaki Y, Ishii S. Mechanosensitive afferent units in the lateral ligament of the ankle. *J Bone Joint Surg Br* 1997; **79**: 490-493 [PMID: 9180335 DOI: 10.1302/0301-620X.79B3.7285]
- Konradsen L**, Ravn JB. Ankle instability caused by prolonged peroneal reaction time. *Acta Orthop Scand* 1990; **61**: 388-390 [PMID: 2239158 DOI: 10.3109/17453679008993546]
- Karlsson J**, Andreasson GO. The effect of external ankle support in chronic lateral ankle joint instability. An electromyographic study. *Am J Sports Med* 1992; **20**: 257-261 [PMID: 1636854 DOI: 10.1177/036354659202000304]

- 28 **Löfvenberg R**, Kärrholm J, Sundelin G, Ahlgren O. Prolonged reaction time in patients with chronic lateral instability of the ankle. *Am J Sports Med* 1995; **23**: 414-417 [PMID: 7573649 DOI: 10.1177/036354659502300407]
- 29 **Lee AJ**, Lin WH. Twelve-week biomechanical ankle platform system training on postural stability and ankle proprioception in subjects with unilateral functional ankle instability. *Clin Biomech* (Bristol, Avon) 2008; **23**: 1065-1072 [PMID: 18621453 DOI: 10.1016/j.clinbiomech.2008.04.013]
- 30 **Kim CY**, Choi JD, Kim HD. No correlation between joint position sense and force sense for measuring ankle proprioception in subjects with healthy and functional ankle instability. *Clin Biomech* (Bristol, Avon) 2014; **29**: 977-983 [PMID: 25238686 DOI: 10.1016/j.clinbiomech.2014.08.017]
- 31 **Glencross D**, Thornton E. Position sense following joint injury. *J Sports Med Phys Fitness* 1981; **21**: 23-27 [PMID: 7278217]
- 32 **Ebig M**, Lephart SM, Burdett RG, Miller MC, Pincivero DM. The effect of sudden inversion stress on EMG activity of the peroneal and tibialis anterior muscles in the chronically unstable ankle. *J Orthop Sports Phys Ther* 1997; **26**: 73-77 [PMID: 9243405 DOI: 10.2519/jospt.1997.26.2.73]
- 33 **Fernandes N**, Allison GT, Hopper D. Peroneal latency in normal and injured ankles at varying angles of perturbation. *Clin Orthop Relat Res* 2000; **(375)**: 193-201 [PMID: 10853169 DOI: 10.1097/0003086-200006000-00023]
- 34 **Vaes P**, Duquet W, Van Gheluwe B. Peroneal Reaction Times and Eversion Motor Response in Healthy and Unstable Ankles. *J Athl Train* 2002; **37**: 475-480 [PMID: 12937570]
- 35 **Holme E**, Magnusson SP, Becher K, Bieler T, Aagaard P, Kjaer M. The effect of supervised rehabilitation on strength, postural sway, position sense and re-injury risk after acute ankle ligament sprain. *Scand J Med Sci Sports* 1999; **9**: 104-109 [PMID: 10220845 DOI: 10.1111/j.1600-0838.1999.tb00217.x]
- 36 **Gross MT**. Effects of recurrent lateral ankle sprains on active and passive judgements of joint position. *Phys Ther* 1987; **67**: 1505-1509 [PMID: 3659134]
- 37 **Hiller CE**, Nightingale EJ, Lin CW, Coughlan GF, Caulfield B, Delahunt E. Characteristics of people with recurrent ankle sprains: a systematic review with meta-analysis. *Br J Sports Med* 2011; **45**: 660-672 [PMID: 21257670 DOI: 10.1136/bjsm.2010.077404]
- 38 **Willems TM**, Witvrouw E, Delbaere K, Philippaerts R, De Bourdeaudhuij I, De Clercq D. Intrinsic risk factors for inversion ankle sprains in females--a prospective study. *Scand J Med Sci Sports* 2005; **15**: 336-345 [PMID: 16181258 DOI: 10.1111/j.1600-0838.2004.00428.x]
- 39 **Witchalls JB**, Waddington G, Adams R, Blanch P. Chronic ankle instability affects learning rate during repeated proprioception testing. *Phys Ther Sport* 2014; **15**: 106-111 [PMID: 23954386 DOI: 10.1016/j.ptsp.2013.04.002]
- 40 **Bosien WR**, Staples OS, Russell SW. Residual disability following acute ankle sprains. *J Bone Joint Surg Am* 1955; **37-A**: 1237-1243 [PMID: 13271470]
- 41 **Staples OS**. Result study of ruptures of lateral ligaments of the ankle. *Clin Orthop Relat Res* 1972; **85**: 50-58 [PMID: 4624809 DOI: 10.1097/00003086-197206000-00011]
- 42 **Lee SP**, Powers C. Fatigue of the hip abductors results in increased medial-lateral center of pressure excursion and altered peroneus longus activation during a unipedal landing task. *Clin Biomech* (Bristol, Avon) 2013; **28**: 524-529 [PMID: 23642515 DOI: 10.1016/j.clinbiomech.2013.04.002]
- 43 **Lentell G**, Katzman LL, Walters MR. The Relationship between Muscle Function and Ankle Stability. *J Orthop Sports Phys Ther* 1990; **11**: 605-611 [PMID: 18787260 DOI: 10.2519/jospt.1990.11.12.605]
- 44 **Beynon BD**, Renström PA, Alosa DM, Baumhauer JF, Vacek PM. Ankle ligament injury risk factors: a prospective study of college athletes. *J Orthop Res* 2001; **19**: 213-220 [PMID: 11347693 DOI: 10.1016/S0736-0266(00)90004-4]
- 45 **McGuine TA**, Keene JS. The effect of a balance training program on the risk of ankle sprains in high school athletes. *Am J Sports Med* 2006; **34**: 1103-1111 [PMID: 16476915 DOI: 10.1177/0363546505284191]
- 46 **Mohammadi F**. Comparison of 3 preventive methods to reduce the recurrence of ankle inversion sprains in male soccer players. *Am J Sports Med* 2007; **35**: 922-926 [PMID: 17379918 DOI: 10.1177/0363546507299259]
- 47 **Rozzi SL**, Lephart SM, Sterner R, Kuligowski L. Balance training for persons with functionally unstable ankles. *J Orthop Sports Phys Ther* 1999; **29**: 478-486 [PMID: 10444738 DOI: 10.2519/jospt.1999.29.8.478]
- 48 **Verhagen E**, van der Beek A, Twisk J, Bouter L, Bahr R, van Mechelen W. The effect of a proprioceptive balance board training program for the prevention of ankle sprains: a prospective controlled trial. *Am J Sports Med* 2004; **32**: 1385-1393 [PMID: 15310562 DOI: 10.1177/0363546503262177]
- 49 **Kidgell DJ**, Horvath DM, Jackson BM, Seymour PJ. Effect of six weeks of dura disc and mini-trampoline balance training on postural sway in athletes with functional ankle instability. *J Strength Cond Res* 2007; **21**: 466-469 [PMID: 17530947 DOI: 10.1519/R-18945.1]
- 50 **McKeon PO**, Ingersoll CD, Kerrigan DC, Saliba E, Bennett BC, Hertel J. Balance training improves function and postural control in those with chronic ankle instability. *Med Sci Sports Exerc* 2008; **40**: 1810-1819 [PMID: 18799992 DOI: 10.1249/MSS.0b013e31817e0f92]
- 51 **Han K**, Ricard MD, Fellingham GW. Effects of a 4-week exercise program on balance using elastic tubing as a perturbation force for individuals with a history of ankle sprains. *J Orthop Sports Phys Ther* 2009; **39**: 246-255 [PMID: 19346625 DOI: 10.2519/jospt.2009.2958]
- 52 **Webster KA**, Gribble PA. Functional rehabilitation interventions for chronic ankle instability: a systematic review. *J Sport Rehabil* 2010; **19**: 98-114 [PMID: 20231748]
- 53 **Schaefer JL**, Sandrey MA. Effects of a 4-week dynamic-balance-training program supplemented with Graston instrument-assisted soft-tissue mobilization for chronic ankle instability. *J Sport Rehabil* 2012; **21**: 313-326 [PMID: 23118072]
- 54 **Tropp H**, Askling C, Gillquist J. Prevention of ankle sprains. *Am J Sports Med* 1985; **13**: 259-262 [PMID: 3927758 DOI: 10.1177/036354658501300408]
- 55 **Bahr R**, Lian O, Bahr IA. A twofold reduction in the incidence of acute ankle sprains in volleyball after the introduction of an injury prevention program: a prospective cohort study. *Scand J Med Sci Sports* 1997; **7**: 172-177 [PMID: 9200322 DOI: 10.1111/j.1600-0838.1997.tb00135.x]
- 56 **de Vries JS**, Krips R, Siersevelt IN, Blankevoort L. Interventions for treating chronic ankle instability. *Cochrane Database Syst Rev* 2006; **(4)**: CD004124 [PMID: 17054198 DOI: 10.1002/14651858.CD004124.pub2]
- 57 **van der Wees PJ**, Lenssen AF, Hendriks EJ, Stomp DJ, Dekker J, de Bie RA. Effectiveness of exercise therapy and manual mobilisation in ankle sprain and functional instability: a systematic review. *Aust J Physiother* 2006; **52**: 27-37 [PMID: 16515420 DOI: 10.1016/S0004-9514(06)70059-9]

**P- Reviewer:** Erdil M, Seijas R, Yamakado K **S- Editor:** Tian YL  
**L- Editor:** A **E- Editor:** Zhang DN





## Retrospective Cohort Study

# Variability of platelet aggregation in patients with clopidogrel treatment and hip fracture: A retrospective case-control study on 112 patients

Anna Clareus, Inga Fredriksson, Håkan Wallén, Max Gordon, André Stark, Olof Sköldenberg

Anna Clareus, Max Gordon, André Stark, Olof Sköldenberg, Division of Orthopaedics, Department of Clinical Sciences at Danderyd Hospital, Karolinska Institutet, 18288 Stockholm, Sweden

Inga Fredriksson, Division of Anesthesiology, Department of Clinical Sciences at Danderyd Hospital, Karolinska Institutet, 18288 Stockholm, Sweden

Håkan Wallén, Division of Cardiology, Department of Clinical Sciences at Danderyd Hospital, Karolinska Institute, 18288 Stockholm, Sweden

**Author contributions:** Clareus A collected data and wrote the manuscript; Fredriksson I interpreted the MEA analyses and wrote the manuscript; Wallén H initiated the study, interpreted the MEA analyses and wrote the manuscript; Stark A operated patients and wrote the manuscript; Gordon M operated patients, performed the statistical analysis and wrote the manuscript; Sköldenberg O initiated the study, performed the statistical analysis, operated patients, supervised Clareus A and wrote the manuscript.

**Ethics approval:** The study was granted ethical approval from the Ethics committee of the Karolinska institute, Stockholm, Sweden.

**Informed consent:** According to the Ethical approval, no informed consent was necessary from individual patients since all data were gathered retrospectively from medical records.

**Conflict-of-interest:** No competing interests declared.

**Data sharing:** Technical appendix, statistical code, and available from the corresponding author at [olof.skoldenberg@ki.se](mailto:olof.skoldenberg@ki.se). The presented data are anonymized and risk of identification is negligible.

**Open-Access:** This article is an open-access article which was selected by an in-house editor and fully peer-reviewed by external reviewers. It is distributed in accordance with the Creative Commons Attribution Non Commercial (CC BY-NC 4.0) license, which permits others to distribute, remix, adapt, build upon this work non-commercially, and license their derivative works on different terms, provided the original work is properly cited and the use is non-commercial. See: <http://creativecommons.org/licenses/by-nc/4.0/>

**Correspondence to:** Olof Sköldenberg, MD, PhD, Consultant Orthopaedic Surgeon, Associate professor, Department of Clinical Sciences at Danderyd Hospital, Karolinska Institutet, Solnavägen 1, 18288 Stockholm,

Sweden. [olof.skoldenberg@ki.se](mailto:olof.skoldenberg@ki.se)

Telephone: +46-700-891253

Fax: +46-700-891253

Received: February 21, 2015

Peer-review started: February 22, 2015

First decision: March 20, 2015

Revised: April 14, 2015

Accepted: May 8, 2015

Article in press: May 11, 2015

Published online: June 18, 2015

## Abstract

**AIM:** To identify the rate of non-responders to clopidogrel treatment in hip fracture patients and study how non-responders differ from controls.

**METHODS:** In a retrospective case-control study we included 28 cases of acute proximal femoral fracture with clopidogrel treatment 2011 to 2013. Eighty-four controls from the same time period were included. Data collected included response to clopidogrel measured with multiple electrode aggregometry (MEA), intraoperative bleeding, erythrocyte transfusion, time to surgery and the incidence of adverse events up to 3 mo after surgery.

**RESULTS:** Eight (29%) of the 28 cases were non-responders. The median intraoperative bleeding was 300 mL (range, 0-1500), and was lower for non-responders (50 mL) but did not reach statistical significance. Erythrocyte transfusions did not differ between responders, non-responders and controls. Forty-five (40%) of 112 patients had adverse events postoperatively but the rate did not differ between patients with and without clopidogrel treatment.

**CONCLUSION:** Almost one-third of patients with

clopidogrel treatment and an acute proximal femoral fracture are non-responders to antiplatelet therapy and can be operated without delay.

**Key words:** Proximal femoral fracture; Clopidogrel; Variability; Bleeding; Adverse events

© **The Author(s) 2015.** Published by Baishideng Publishing Group Inc. All rights reserved.

**Core tip:** In this pilot study, almost one-third of patients with clopidogrel treatment and an acute proximal femoral fracture are non-responders to antiplatelet therapy. Analysis of variability in platelet aggregation can be used when fast tracking patients and we recommend this for emergency hospitals treating patients with acute proximal femoral fractures.

Clareus A, Fredriksson I, Wallén H, Gordon M, Stark A, Sköldenberg O. Variability of platelet aggregation in patients with clopidogrel treatment and hip fracture: A retrospective case-control study on 112 patients. *World J Orthop* 2015; 6(5): 439-445 Available from: URL: <http://www.wjgnet.com/2218-5836/full/v6/i5/439.htm> DOI: <http://dx.doi.org/10.5312/wjo.v6.i5.439>

## INTRODUCTION

An increasing number of elderly patients are managed with long term antiplatelet therapy after cardiovascular and cerebrovascular events<sup>[1]</sup>. Clopidogrel is a frequently used antiplatelet drug which irreversibly inhibits ADP-induced platelet aggregation through blockade of the platelet P2Y<sub>12</sub> receptor. Although the drug has been shown to be very effective in large clinical trials, there is a considerable inter-individual response to this drug. Depending on the platelet function method used and cut-off values set, between 5%-44% of patients have been shown to have reduced platelet inhibiting effect of the drug. The reason for this variability is likely multifactorial and include, e.g., genotype, drug interactions and compliance to drug treatment<sup>[2-4]</sup>.

Approximately 1 in 5 of patients with clopidogrel treatment will need non-cardiac surgery within two years<sup>[5]</sup>. It is well known that patients with clopidogrel treatment undergoing cardiovascular surgery have an increased risk of bleeding events during and after surgery. They also have a higher percentage of post-operative hemorrhagic complications and transfusions<sup>[6,7]</sup>. Clinical guidelines recommend that patients on clopidogrel treatment should interrupt their therapy 5-7 d before surgery to avoid increased intraoperative bleeding, even though recent studies of patients undergoing hip fracture surgery is inconsistent if the risk of perioperative bleeding is increased or not<sup>[8]</sup>.

Patients suffering a hip fracture are elderly, and because of multiple co-morbidities attributed to age, they

are one of the most fragile patient-groups in orthopedics, with a high morbidity and mortality following surgical treatment. Delayed surgery is associated with both increased frequency of medical complications and increased mortality<sup>[9,10]</sup>. Thus, the demand for rapid surgery is, for hip fracture patients with simultaneous clopidogrel treatment, contrasted against the bleeding risk for these patients.

Laboratory tests have recently been developed in order to examine platelet function bedside. One of these methods is multiple electrode aggregometry (MEA)<sup>[11]</sup>. This method can be used to assess platelet aggregation during treatment with platelet inhibiting agents such as clopidogrel, aspirin and other new platelet inhibitors in a venous whole blood sample (Figure 1)<sup>[11]</sup>.

The rate of non-responders and responders for clopidogrel treated patients in hip fracture patients has, to the best of our knowledge, not been published in peer-reviewed literature. The aim of this study was to identify the rate of non-responders to clopidogrel treatment in hip fracture patients and to study if responders and non-responders differ from patients without clopidogrel in intraoperative bleeding and adverse events.

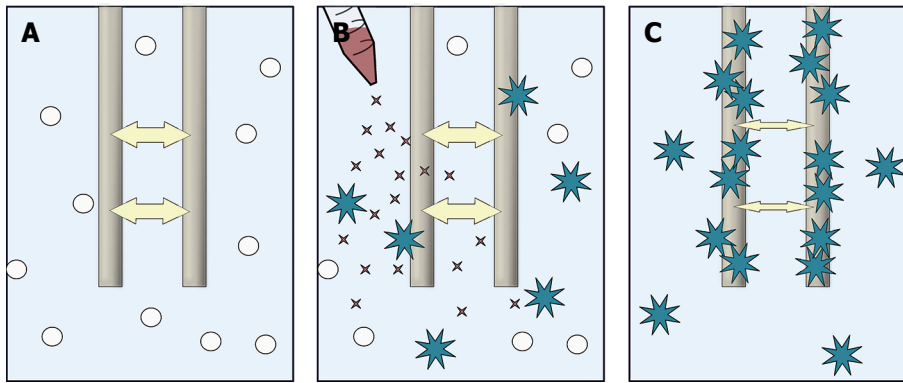
## MATERIALS AND METHODS

### Study design and setting

The study was conducted in accordance with the ethical principles of the Helsinki declaration and was approved by Ethics Committee of the Karolinska Institute. This retrospective case-control study was performed at the Orthopedic Department of Danderyd Hospital in collaboration with the Karolinska Institute (Department of Clinical Sciences at Danderyd Hospital) in Stockholm, Sweden. Danderyd Hospital is 1 of the 5 major emergency hospitals in Stockholm, providing medical care with a catchment area of approximately 500000 inhabitants.

### Study subjects

At our department, we fast-track hip fracture patients and operate > 80% of patients within 24 h from arrival to the hospital<sup>[12]</sup>. We included patients undergoing treatment with clopidogrel who had a concomitant primary hip fracture or periprosthetic fracture that required acute surgery between 2011-2013. From this group, we excluded patients with non-displaced femoral neck fracture who underwent percutaneous internal fixation with cannulated screws because of the minimal risk of bleeding through this type of surgery. We also excluded patients with other acute orthopedic injuries and patients planned for elective surgery. Three matched controls for every included patient were identified from our department including all patients who had been treated at the clinic for hip fracture during 2010-2013. Patients with warfarin treatment were excluded from the control group. The controls



**Figure 1 Schematic illustration of multiple electrode aggregometry.** A: Whole blood sample is put in a twin impedance sensor; B: Addition of a platelet agonist activates platelets to adhere to the electrodes; C: When platelets adhere to electrodes there will be an increase in electrical resistance between electrodes. Electrical resistance is measured as a value of platelet activity. Platelets affected by clopidogrel treatment adhere less to electrodes.

were then matched according to age, type of fracture (inter- or subtrochanteric/femoral neck/periprosthetic), type of surgery (sliding hip screw or intramedullary nail/hip arthroplasty/plate osteosynthesis/femoral stem revision) and operation time.

#### Variables and data sources

The outcome variables were the rate of non-responders in patients with clopidogrel treatment, perioperative bleeding in millilitre and the occurrence of adverse events up to 3 mo after surgery. Other variables collected included sex, age, American Society of Anesthesiologists (ASA)-classification<sup>[13]</sup>, type of surgery, type of fracture and surgery time.

#### Multiple electrode aggregometry

Blood samples for MEA were taken from an antecubital vein and collected in hirudin tubes (Refludan, Dynabyte). Test tubes were kept at room temperature until analysis 30–179 min after collection. MEA measured by Multiplate™ (Dynabyte, Munich, Germany) has been described elsewhere<sup>[14]</sup>. In brief, 300  $\mu$ L of whole-blood is diluted 1:1 with 0.9% NaCl solution in cuvettes and heated to 37 °C under stirring for 3 min. After addition of a platelet agonist, platelets adhere to and aggregate on two pairs of silver-coated copper electrodes. The increase in electrical impedance between electrodes due to platelet aggregation is recorded in arbitrary units (AU) during 6 min (Figure 1). The MEA-value is the average area under the curve (AUC) for the two electrode pairs (AU\*min) in the cuvette. For each patient 2 cuvettes were used. Adenosine diphosphate (ADP) was added at a final concentration of 6.4  $\mu$ mol/L in each cuvette. We used the previously established cut off value to define clopidogrel responders<sup>[15]</sup>. Thus, responders were those who had a mean MEA ADP value of the readings obtained in the two cuvettes below 47 AU\*min; non-responders were those with a value above this level<sup>[15]</sup>.

#### Patient data

From digital patient records the following parameters

were collected: Type of hip fracture, ASA grade<sup>[13]</sup>, indication for clopidogrel treatment, time to surgery in hours (arrival at the emergency department to skin incision), choice of anesthesia (general/spinal), method of surgery, preoperative treatment with platelet transfusion, intraoperative bleeding (assessed from suctions, drainage and swabs used during surgery) and peri- and post-operative transfusion with erythrocyte units and plasma. The intra-operative blood loss was calculated by measuring the fluid in collection containers subtracting the amount of lavage and by weighing surgical swabs. The total amount of transfusions given with platelets, erythrocytes and fresh-frozen plasma was recorded. The occurrence of adverse events (AEs) was recorded. The World Health Organization (WHO) definitions were used. An AE is defined as any unfavourable or unintended sign, symptom or disease associated with the use of a medical treatment or procedure, regardless of whether it is considered related to the medical treatment or procedure<sup>[16]</sup>. The Swedish personal identity number in conjunction with the Swedish Death Register and electronic hospital records was used to identify and verify all AEs as well as mortality up to 3 mo postoperatively.

#### Statistical analysis

Descriptive statistics were used. ANOVA and chi-square test were used to compare the groups. Bonferroni correction was used to correct for multiple comparison. The study size was derived from the number of available responders and non-responders during the study period. A *P*-value < 0.05 was considered significant. The statistical analysis was performed using SPSS Statistics software 22.0 for Mac (SPSS Inc., Chicago, IL).

## RESULTS

#### Participants and descriptive data

One hundred and twelve patients were included in the study, 28 patients undergoing treatment with

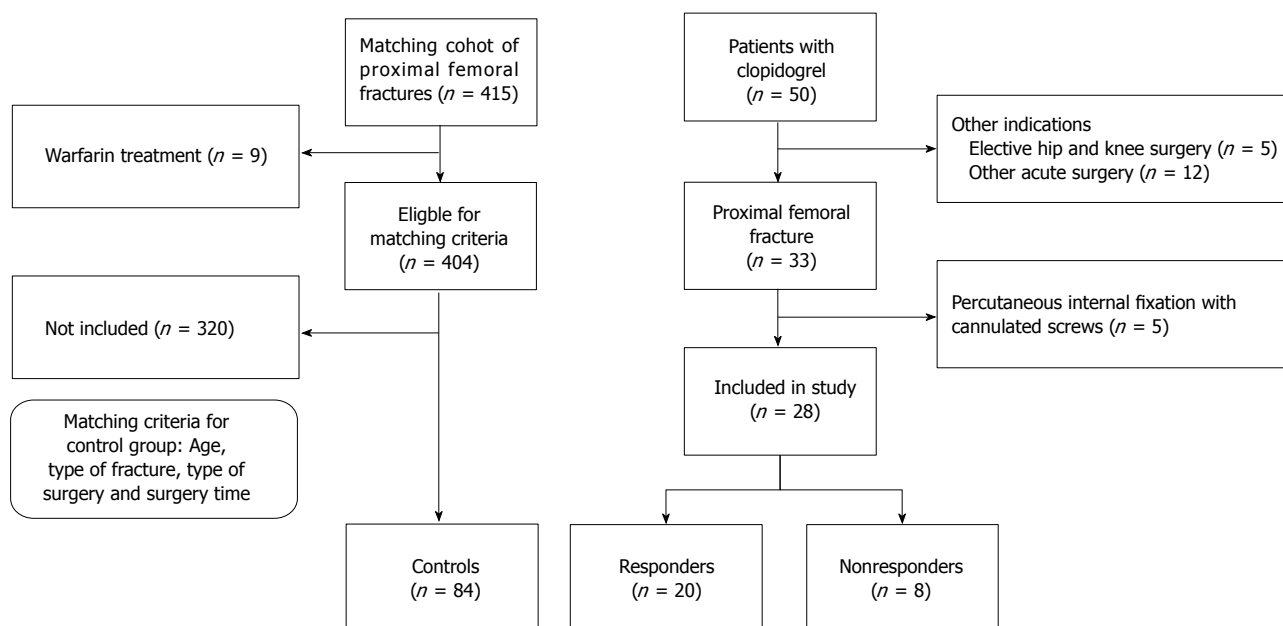


Figure 2 Flow of patients in the study.

Table 1 Cohort characteristics by treatment group *n* (%)

Variable	None ( <i>n</i> = 84)	Responder ( <i>n</i> = 20)	Non-responder ( <i>n</i> = 8)
Sex			
Male	22 (26)	9 (45)	5 (62)
Female	62 (74)	11 (55)	3 (38)
Age	85 (± 7)	82 (± 9)	88 (± 4)
ASA class			
1-2	27 (32)	1 (5)	0 (0)
3-4	57 (68)	19 (95)	8 (100)
Fracture type			
Femoral neck	23 (27)	8 (40)	0 (0)
Per/subthrochanteric	46 (55)	8 (40)	7 (88)
Periprosthetic	15 (18)	4 (20)	1 (12)
Surgery			
Hemi/total arthroplasty	23 (27)	8 (40)	0 (0)
Sliding hips screw or intramedullary nail	46 (55)	8 (40)	7 (88)
Locking plate osteosynthesis	6 (7)	1 (5)	1 (12)
Revision of implants	9 (11)	3 (15)	0 (0)

For continuous values the mean together with the standard deviation is used. ASA: American Society of Anesthesiologists.

clopidogrel and 84 controls [male/females: 36/76, mean age 84 (range, 56-99) years] (Figure 2, Table 1). 20 patients were under clopidogrel treatment because of cerebral insult, 6 because of myocardial infarction with following artery stenting, and in 2 cases the indication of clopidogrel treatment could not be found in referral. Nineteen (17%) of the patients died during the study, mortality rate did not differ between the groups.

Twenty of the patients with clopidogrel treatment showed results of MEA as responders to the drug and 8 (29%) patients were non-responders. The median intraoperative bleeding was 300 mL (range, 0-1800). The bleeding was lower for non-responders but this

did not reach statistical significance ( $P = 0.8$ ). The responder group did not have more intraoperative bleeding than controls (Table 2). We found no significant difference in erythrocyte transfusion between the groups, with a median number of 2 units for controls and non-responders and 1 unit for responders (Table 2). The anaesthesia, plasma and platelet transfusions given differed between the groups (Table 3). Although tranexamic acid was given to the majority of all patients, platelet and plasma transfusions were more frequently given to patients with clopidogrel treatment, especially the responder group. Notably, platelet transfusion was mainly given to those of the patients with the most pronounced platelet inhibiting effect of clopidogrel. In contrast, in the non-responder group transfusion was given to 1 of the 8 patients (Table 3). The mean (SD) time to surgery was  $26 \pm 19$  h and differed between the groups ( $P = 0.001$ ). Responders waited on average almost one day more for their surgery compared to the controls and non-responders (Table 2). In 7 patients in the responder group, the reason for prolonged time to surgery was pronounced effect of clopidogrel treatment with significantly lower values than the other responders. In these cases the risk of major bleeding was considered higher than the risk of delayed hip fracture surgery, and it was recommended from the cardiologist or anesthesiologist consulted to wait with surgery if possible. These patients were re-tested before surgery with multiple electrode aggregometry. Data showed that the antiplatelet effect of clopidogrel had decreased to a ADP value of over 47 (*i.e.*, a non-responder value).

## DISCUSSION

In this retrospective case-control study on patients



**Table 2** Bleeding, erythrocyte transfusions and adverse events up to 3 mo follow-up

Variable	Control (n = 84)	Responder (n = 20)	Non-responder (n = 8)	P-value
Peroperative bleeding (mean $\pm$ SD)	350 (0-1800)	300 (50-1500)	150 (50-550)	0.8 <sup>2</sup>
Any erythrocyte transfusion, n (%)	54 (64)	13 (65)	6 (75)	
Number of transfusions, median (range)	2 (0-10)	1 (0-6)	2 (0-6)	1.0 <sup>2</sup>
Time to surgery (h), mean $\pm$ SD	21 ( $\pm$ 12)	45 ( $\pm$ 26)	28 ( $\pm$ 33)	0.003 <sup>2</sup>
Adverse events				
Any AE, n (%)	31 (37)	9 (45)	5 (62)	1.0 <sup>3</sup>
Type of AE, n <sup>1</sup>				
Deceased, n	14	2	3	
Hip related	6	2	0	
Cardiovascular	8	1	3	
Infection	14	9	4	
Other	24	6	3	

<sup>1</sup>Several patients had more than 1 AE; <sup>2</sup>ANOVA; <sup>3</sup> $\chi^2$  test. Bonferroni correction has been applied to all P-values.

**Table 3** Anaesthesia and transfusions n (%)

Variable	Control (n = 84)	Responder (n = 20)	Non-responder (n = 8)	P-value
Anaesthesia				
Spinal	82 (98)	5 (25)	7 (88)	1
General	2 (2)	15 (75)	1 (12)	
Tranexamic acid				
No	9 (11)	3 (15)	0 (0)	
Yes	75 (89)	17 (85)	8 (100)	0.003
Plasma transfusion				
No	83 (99)	15 (75)	7 (88)	
Yes	1 (1)	5 (25)	1 (12)	0.003
Thrombocyte transfusion				
No	84 (100)	9 (45)	7 (88)	
Yes	0 (0)	11 (55)	1 (12)	0.003

P-value derived from  $\chi^2$  test. Bonferroni correction has been applied to all P-values.

with a proximal femoral fracture and concurrent clopidogrel treatment almost one third of patients with clopidogrel were non-responders, indicating that they had no effect of this treatment, or that they were not compliant to medication. Thus, the incidence of non-responsiveness is similar to what we found in patients with ischemic stroke or TIA treated with clopidogrel at our institution<sup>[17]</sup>. By continuously using MEA at our department, we were able to fast-track non-responders to surgery within the same time as the control group (Table 2).

In previous publications, anti-platelet treated hip fracture patients have been delayed to surgery, often with negative effects on complication rate and mortality. Harty *et al.*<sup>[18]</sup> included 21 patients on clopidogrel with acute hip fracture in a case-control study and found that patients on clopidogrel in mean waited 7 d for surgery, and 30-d mortality for these patients were 29%, compared to the control group who had surgery within 2 d and had a 30-d mortality of 4%. The authors conclude that surgery should not be postponed. A high rate of complications due to prolonged time to surgery was also observed in a study made of Johansen *et al.*<sup>[19]</sup>, where clopidogrel treated patients who waited 5 d for surgery had a higher rate

of complications and they also found an increased intraoperative bleeding for patients who had surgery immediately. This result is in line with Chechik *et al.*<sup>[20]</sup> study of 44 patients where clopidogrel was continued throughout surgery. In contrast to these findings, there are reports that have failed to find a difference in bleeding and complication rate between patients on clopidogrel and controls<sup>[21,22]</sup>. These inconsistencies between existing studies is possibly, as in our study, due to the fact that a large proportion of patients are non-responders<sup>[23,24]</sup>. These relatively recent studies of hip fracture patients with clopidogrel treatment have not considered the individual responsiveness to the drug, which may be an important reason for the inconsistency in their results<sup>[18,20-22]</sup>. If almost one third of the patients with clopidogrel (as in our study) have no effect of treatment the non-responders could even out the results a group level and hide the actual bleeding risk for responders. More research is needed in this area but clearly observational and interventional studies on hip fracture patients with concurrent antiplatelet therapy need to take this into consideration for bleeding endpoints.

The clinical recommendation to discontinue clopidogrel treatment 5-7 d ahead of surgery is based on studies made for cardiological interventions. They have reported that continuation, or late (*i.e.*, 1 d) discontinuation of clopidogrel treatment is associated with increased intra- and postoperative bleeding and increased need for transfusions after coronary bypass surgery, compared to earlier discontinuation (*i.e.*, 3-5 d)<sup>[6,7,25]</sup>. For hip fracture patients, this discontinuation is in stark contrast to the need for rapid surgery. Delayed surgery is associated with both increased morbidity and mortality<sup>[12,26]</sup>. Both the 30-d all-cause mortality as well as minor and major medical complications are significant higher in hip fracture patients with surgical delay over 48 h<sup>[9,10]</sup>.

When patients with increased risk of bleeding are identified, preoperative treatment can be customized. In the above mentioned studies of hip fracture surgery and clopidogrel treatment, it is not reported if preoperative treatment differ between clopidogrel

treated patients and controls. Wallace and Hossain report that all patients were medically optimized before surgery but do not mention if preoperative transfusion with platelets were given<sup>[22,27]</sup>. In our study patients with pronounced effect of the drug received platelet transfusions to higher extent than controls and those patients with none or low effect, and intraoperative bleeding did not differ between the groups. Neither did post-operative erythrocyte transfusion differ between the groups. Platelet transfusions should be administered with care, as whole blood transfusions, due to transfusion related complications such as infections, allergic reactions and febrile non-hemolytic transfusion<sup>[28]</sup>. This is why we find it important to identify patients that are at high risk for bleeding, so that we do not treat patients with platelet transfusion preoperatively if not needed.

In our study, non-responders were operated within the same time as controls, which likely reduces the risk of complications caused by delayed surgery. Patients with good response to the drug could either be optimized with platelet transfusion and operated immediately, or if their medical condition allowed, wait for surgery until a second analysis showed regression of clopidogrel effect. This is the reason why responders wait for surgery in mean 45 h compared to non-responders and controls who have surgery approximately within a day.

Analysis of platelet aggregation variability was also for help when planning for anaesthetics. Regional anaesthetics is associated with less risk for the patient compared to general anaesthetics and shortens operation time<sup>[29,30]</sup>. Hossain *et al.*<sup>[27]</sup> reported in their study of 50 hip fractures and clopidogrel treatment that 88% of the patients had surgery in general anaesthesia, compared to controls were only 6% had general anaesthesia. In our study, patients eligible for spinal anaesthesia despite anti-platelet therapy could be identified preoperatively.

Variability of platelet function was, in the present study, evaluated with the MEA method. It is a standardized method to determine platelet function with high sensitivity and reproducibility<sup>[11]</sup>. The analysis is, compared to many other platelet function methods, a simple and rapid assay that can be used bedside in every day clinical practice. No centrifugation step which may influence platelet function is needed, as the analysis is made in a whole blood sample. Compared to template bleeding time which has previously been used to assess the risk of increased bleeding, the risk for user dependent variation is low since the method is easier to perform<sup>[11,14,31,32]</sup>.

This is, to the best of our knowledge, the first published study where analysis of variability in platelet aggregation is used for patients with an acute proximal femoral fracture. We were able to obtain sound data on all studied outcome variable and found well matched controls for our cases. The main limitations of the study are the small sample size, retrospective design

and relatively short follow-up. Thus, even though our groups did not differ in the incidence of adverse events or mortality rate, the study is not sufficiently powered for these outcomes. We have used intraoperative bleeding as a proxy for this, and most surgeons would agree that it is important to minimize blood loss for hip fracture patients. The study is also limited by intervention bias; MEA test was used to make clinical decisions such as platelet transfusions and surgical timing. These interventions could clearly have an effect on the results such as intraoperative bleeding as well as outcomes and differences between groups. This is however inherent in the method when using MEA and we believe that it is therefore this analysis is helpful for clinicians when making decision on timing of surgery.

In this pilot study, almost one-third of patients with clopidogrel treatment and a acute proximal femoral fracture are non-responders to antiplatelet therapy when presenting at the hospital. Analysis of variability in platelet aggregation can be used when fast tracking patients and we recommend this for emergency hospitals treating patients with acute proximal femoral fractures.

## COMMENTS

### Background

To identify the rate of non-responders to clopidogrel treatment in hip fracture patients and study how non-responders differ from controls.

### Research frontiers

The incidence of non-responsiveness to clopidogrel treatment for hip-fracture patients is unknown. By continuously using multiple electrode aggregometry (MEA) at the authors' department they can fast-track non-responders to surgery despite clopidogrel treatment.

### Innovations and breakthroughs

In this retrospective case-control study on patients with a proximal femoral fracture and concurrent clopidogrel treatment almost one third of patients with clopidogrel were non-responders, indicating that they had no effect of this treatment, or that they were not compliant to medication.

### Applications

Analysis of variability in platelet aggregation using MEA can be used to identify non-responders and responders to clopidogrel treatment in hip fracture patients and they recommend this for emergency hospitals treating patients with acute proximal femoral fractures.

### Terminology

Responders: (*i.e.*, to clopidogrel treatment): patients with anti-platelet effect of clopidogrel; Non-responders: Patients with no effect of treatment; MEA: A method to measure the effect of anti-platelet therapy *in vivo*.

### Peer-review

The peer-reviewers pointed out that the study is also limited by intervention bias; MEA test was used to make clinical decisions such as platelet transfusions and surgical timing. These interventions could clearly have an effect on the results such as intraoperative bleeding as well as outcomes and differences between groups. The reviewers also pointed out the small sample and the retrospective design as limitations.

## REFERENCES

- 1 Brinker AD, Swartz L. Growth in clopidogrel-aspirin combination therapy. *Ann Pharmacother* 2006; **40**: 1212-1213 [PMID: 16684805 DOI: 10.1345/aph.1H001]
- 2 Gurbel PA, Tantry US. Clopidogrel resistance? *Thromb Res* 2007; **120**: 311-321 [PMID: 17109936 DOI: 10.1016/j.thromres.2006.08.012]

- 3 **Cattaneo M.** Resistance to antiplatelet drugs: molecular mechanisms and laboratory detection. *J Thromb Haemost* 2007; **5** Suppl 1: 230-237 [PMID: 17635731]
- 4 **Järemo P,** Lindahl TL, Fransson SG, Richter A. Individual variations of platelet inhibition after loading doses of clopidogrel. *J Intern Med* 2002; **252**: 233-238 [PMID: 12270003 DOI: 10.1046/j.1365-2796.2002.01027.x]
- 5 **Brilakis ES,** Banerjee S. Patient with coronary stents needs surgery: what to do? *JAMA* 2013; **310**: 1451-1452 [PMID: 24101010 DOI: 10.1001/jama.2013.279123]
- 6 **Mehta RH,** Roe MT, Mulgund J, Ohman EM, Cannon CP, Gibler WB, Pollack CV, Smith SC, Ferguson TB, Peterson ED. Acute clopidogrel use and outcomes in patients with non-ST-segment elevation acute coronary syndromes undergoing coronary artery bypass surgery. *J Am Coll Cardiol* 2006; **48**: 281-286 [PMID: 16843176 DOI: 10.1016/j.jacc.2006.04.029]
- 7 **Fox KA,** Mehta SR, Peters R, Zhao F, Lakkis N, Gersh BJ, Yusuf S. Benefits and risks of the combination of clopidogrel and aspirin in patients undergoing surgical revascularization for non-ST-elevation acute coronary syndrome: the Clopidogrel in Unstable angina to prevent Recurrent ischemic Events (CURE) Trial. *Circulation* 2004; **110**: 1202-1208 [PMID: 15313956 DOI: 10.1161/01.CIR.0000140675.85342.1B]
- 8 **Manaqibwala MI,** Butler KA, Sagebien CA. Complications of hip fracture surgery on patients receiving clopidogrel therapy. *Arch Orthop Trauma Surg* 2014; **134**: 747-753 [PMID: 24682494 DOI: 10.1007/s00402-014-1981-0]
- 9 **Shiga T,** Wajima Z, Ohe Y. Is operative delay associated with increased mortality of hip fracture patients? Systematic review, meta-analysis, and meta-regression. *Can J Anaesth* 2008; **55**: 146-154 [PMID: 18310624 DOI: 10.1007/BF03016088]
- 10 **Lefaiyre KA,** Macadam SA, Davidson DJ, Gandhi R, Chan H, Broekhuysen HM. Length of stay, mortality, morbidity and delay to surgery in hip fractures. *J Bone Joint Surg Br* 2009; **91**: 922-927 [PMID: 19567858 DOI: 10.1302/0301-620X.91B7.22446]
- 11 **Tóth O,** Calatzis A, Penz S, Losonczy H, Siess W. Multiple electrode aggregometry: a new device to measure platelet aggregation in whole blood. *Thromb Haemost* 2006; **96**: 781-788 [PMID: 17139373 DOI: 10.1160/TH06-05-0242]
- 12 **Eriksson M,** Kelly-Pettersson P, Stark A, Ekman AK, Sköldenberg O. 'Straight to bed' for hip-fracture patients: a prospective observational cohort study of two fast-track systems in 415 hips. *Injury* 2012; **43**: 2126-2131 [PMID: 22769975 DOI: 10.1016/j.injury.2012.05.017]
- 13 **Owens WD,** Felts JA, Spitznagel EL. ASA physical status classifications: a study of consistency of ratings. *Anesthesiology* 1978; **49**: 239-243 [PMID: 697077 DOI: 10.1097/00000542-197810000-00003]
- 14 **Sibbing D,** Braun S, Jawansky S, Vogt W, Mehilli J, Schömig A, Kastrati A, von Beckerath N. Assessment of ADP-induced platelet aggregation with light transmission aggregometry and multiple electrode platelet aggregometry before and after clopidogrel treatment. *Thromb Haemost* 2008; **99**: 121-126 [PMID: 18217143]
- 15 **Sibbing D,** Braun S, Morath T, Mehilli J, Vogt W, Schömig A, Kastrati A, von Beckerath N. Platelet reactivity after clopidogrel treatment assessed with point-of-care analysis and early drug-eluting stent thrombosis. *J Am Coll Cardiol* 2009; **53**: 849-856 [PMID: 19264241 DOI: 10.1016/j.jacc.2008.11.030]
- 16 **World Health Organization.** WHO guidelines for reporting adverse events. [accessed 2005]. Available from: URL: [http://www.who.int.proxy.kib.ki.se/patientsafety/events/05/Reporting\\_Guidelines.pdf](http://www.who.int.proxy.kib.ki.se/patientsafety/events/05/Reporting_Guidelines.pdf)
- 17 **Lundström A,** Laska AC, Von Arbin M, Jörneskog G, Wallén H. Glucose intolerance and insulin resistance as predictors of low platelet response to clopidogrel in patients with minor ischemic stroke or TIA. *Platelets* 2014; **25**: 102-110 [PMID: 23527528 DOI: 10.3109/09537104.2013.777951]
- 18 **Harty JA,** McKenna P, Moloney D, D'Souza L, Masterson E. Anti-platelet agents and surgical delay in elderly patients with hip fractures. *J Orthop Surg (Hong Kong)* 2007; **15**: 270-272 [PMID: 18162667]
- 19 **Johansen A,** White J, Turk A. Clopidogrel therapy--implications for hip fracture surgery. *Injury* 2008; **39**: 1188-1190 [PMID: 18656188 DOI: 10.1016/j.injury.2008.03.018]
- 20 **Chechik O,** Thein R, Fichman G, Haim A, Tov TB, Steinberg EL. The effect of clopidogrel and aspirin on blood loss in hip fracture surgery. *Injury* 2011; **42**: 1277-1282 [PMID: 21329923 DOI: 10.1016/j.injury.2011.01.011]
- 21 **Feely MA,** Mabry TM, Lohse CM, Sems SA, Mauck KF. Safety of clopidogrel in hip fracture surgery. *Mayo Clin Proc* 2013; **88**: 149-156 [PMID: 23374618 DOI: 10.1016/j.mayocp.2012.11.007]
- 22 **Wallace HC,** Probe RA, Chaput CD, Patel KV. Operative treatment of hip fractures in patients on clopidogrel: a case-control study. *Iowa Orthop J* 2012; **32**: 95-99 [PMID: 23576928]
- 23 **Mahla E,** Suarez TA, Bliden KP, Rehak P, Metzler H, Sequeira AJ, Cho P, Sell J, Fan J, Antonino MJ, Tantry US, Gurbel PA. Platelet function measurement-based strategy to reduce bleeding and waiting time in clopidogrel-treated patients undergoing coronary artery bypass graft surgery: the timing based on platelet function strategy to reduce clopidogrel-associated bleeding related to CABG (TARGET-CABG) study. *Circ Cardiovasc Interv* 2012; **5**: 261-269 [PMID: 22396581 DOI: 10.1161/CIRCINTERVENTIONS.111.967208]
- 24 **Gurbel PA,** Mahla E, Tantry US. Peri-operative platelet function testing: the potential for reducing ischaemic and bleeding risks. *Thromb Haemost* 2011; **106**: 248-252 [PMID: 21505715 DOI: 10.1160/TH11-02-0063]
- 25 **Firanesu CE,** Martens EJ, Schönberger JP, Soliman Hamad MA, van Straten AH. Postoperative blood loss in patients undergoing coronary artery bypass surgery after preoperative treatment with clopidogrel. A prospective randomised controlled study. *Eur J Cardiothorac Surg* 2009; **36**: 856-862 [PMID: 19616440 DOI: 10.1016/j.ejcts.2009.05.032]
- 26 **Moran CG,** Wenn RT, Sikand M, Taylor AM. Early mortality after hip fracture: is delay before surgery important? *J Bone Joint Surg Am* 2005; **87**: 483-489 [PMID: 15741611 DOI: 10.2106/JBJS.D.01796]
- 27 **Hossain FS,** Rambani R, Ribee H, Koch L. Is discontinuation of clopidogrel necessary for intracapsular hip fracture surgery? Analysis of 102 hemiarthroplasties. *J Orthop Traumatol* 2013; **14**: 171-177 [PMID: 23563577 DOI: 10.1007/s10195-013-0235-1]
- 28 **Katus MC,** Szczepiorkowski ZM, Dumont LJ, Dunbar NM. Safety of platelet transfusion: past, present and future. *Vox Sang* 2014; **107**: 103-113 [PMID: 24650183 DOI: 10.1111/vox.12146]
- 29 **Rashid RH,** Shah AA, Shakoar A, Noordin S. Hip fracture surgery: does type of anesthesia matter? *Biomed Res Int* 2013; **2013**: 252356 [PMID: 23819114]
- 30 **Urwin SC,** Parker MJ, Griffiths R. General versus regional anaesthesia for hip fracture surgery: a meta-analysis of randomized trials. *Br J Anaesth* 2000; **84**: 450-455 [PMID: 10823094 DOI: 10.1093/oxfordjournals.bja.a013468]
- 31 **Velik-Salchner C,** Maier S, Innerhofer P, Streif W, Klingler A, Kolbitsch C, Fries D. Point-of-care whole blood impedance aggregometry versus classical light transmission aggregometry for detecting aspirin and clopidogrel: the results of a pilot study. *Anesth Analg* 2008; **107**: 1798-1806 [PMID: 19020120 DOI: 10.1213/ane.0b013e31818524c1]
- 32 **Ridefelt P,** Egberg N, Hillarp A, Lethagen S, Tengborn L. [New in vitro analysis tested: bleeding time is still the best method for evaluation of primary hemostasis]. *Lakartidningen* 2001; **98**: 3922-3924 [PMID: 11586831]

**P- Reviewer:** Guerado E, Hartshorn TA, Metzger PD, Wang Y, Zak L

**S- Editor:** Tian YL **L- Editor:** A **E- Editor:** Zhang DN





Published by **Baishideng Publishing Group Inc**

8226 Regency Drive, Pleasanton, CA 94588, USA

Telephone: +1-925-223-8242

Fax: +1-925-223-8243

E-mail: [bpgoffice@wjgnet.com](mailto:bpgoffice@wjgnet.com)

Help Desk: <http://www.wjgnet.com/esps/helpdesk.aspx>

<http://www.wjgnet.com>

