

# World Journal of *Cardiology*

*World J Cardiol* 2017 October 26; 9(10): 773-795





## Editorial Board

2014-2017

The *World Journal of Cardiology* Editorial Board consists of 416 members, representing a team of worldwide experts in cardiology. They are from 46 countries, including Argentina (3), Australia (7), Austria (6), Belgium (2), Brazil (8), Canada (11), China (37), Croatia (1), Cuba (1), Cyprus (1), Czech Republic (2), Denmark (3), Egypt (1), Finland (3), France (3), Germany (32), Greece (10), Hungary (5), India (4), Iran (2), Ireland (1), Israel (5), Italy (63), Japan (32), Kosovo (1), Malaysia (1), Mexico (1), Morocco (1), Netherlands (9), New Zealand (1), Nigeria (2), Norway (2), Poland (8), Portugal (2), Saudi Arabia (2), Singapore (3), Slovenia (1), South Korea (9), Spain (14), Switzerland (3), Thailand (3), Turkey (13), United Arab Emirates (1), United Kingdom (20), United States (73), Uruguay (2), and Venezuela (1).

### EDITORS-IN-CHIEF

Jian-Jun Li, *Beijing*  
Giuseppe De Luca, *Novara*  
Nathan D Wong, *Irvine*

### ASSOCIATE EDITOR

Fabio Barili, *Cuneo*  
Raffaele Bugiardini, *Bologna*  
Olaf Walter Franzen, *Zürich*  
Philipp Kahlert, *Essen*  
Giora Landesberg, *Jerusalem*  
Elsayed Z Soliman, *Winston Salem*

### GUEST EDITORIAL BOARD

#### MEMBERS

Shih-Tai Chang, *Putz*  
Mien-Cheng Chen, *Kaohsiung*  
Juei-Tang Cheng, *Tainan*  
Woei-Jer Chuang, *Tainan*  
Shih-Hung Hsiao, *Kaohsiung*  
Wei-Chun Huang, *Kaohsiung*  
Tsong-Ming Lee, *Tainan*  
Tzong-Shyuan Lee, *Taipei*  
Jiun-Yi Li, *Taipei*  
Gen-Min Lin, *Hualien*  
Ping-Yen Liu, *Tainan*  
Kou-Gi Shyu, *Taipei*  
Chin-Hsiao Tseng, *Taipei*

### MEMBERS OF THE EDITORIAL BOARD



#### Argentina

Mariano Falconi, *Buenos Aires*  
Ricardo R Forastiero, *Buenos Aires*  
Gaston A Rodriguez-Granillo, *Buenos Aires*



#### Australia

Christoph E Hagemeyer, *Melbourne*  
Christian Hamilton-Craig, *Brisbane*  
Kwok Ming Ho, *Perth*  
Tin Kyaw, *Melbourne*  
Kazuko Masuo, *Melbourne*  
Hamish C Prosser, *Sydney*  
Zhonghua Sun, *Perth*



#### Austria

Alexander Binder, *Graz*  
Mariann Gyongyosi, *Vienna*  
Rudolf Kirchmair, *Innsbruck*  
Deddo Moertl, *Vienna*  
Gert Reiter, *Graz*  
Ioannis Tentzeris, *Vienna*



#### Belgium

BSN Alzand, *Ronse*  
Paul Vermeersch, *Antwerpen*



#### Brazil

Edimar A Bocchi, *Sao Paulo*  
Antonio CC de Carvalho, *Rio de Janeiro*  
Guilherme V Guimaraes, *Sao Paulo*  
Ronaldo Lima, *Rio de Janeiro*  
Christiane Malfitano, *Sao Paulo*  
Antonio P Mansur, *Sao Paulo*  
Gilberto De Nucci, *Campinas*  
Andre Talvani, *Ouro Preto*



#### Canada

Rodrigo Bagur, *Quebec*  
Jagdish Butany, *Toronto*  
Mohamed Chahine, *Québec*  
Paul Farand, *Sherbrooke*  
Michael E Farkouh, *Toronto*  
Robert Gros, *London*  
Joseph F Ndisang, *Saskatoon*  
Simon W Rabkin, *Vancouver*  
Jacqueline WL Saw, *Vancouver*  
Caroline Sirois, *Levis*  
Sara S Nunes Vasconcelos, *Toronto*



#### China

Feng Cao, *Xi'an*  
Xiao-Shu Cheng, *Nanchang*  
Jie Du, *Beijing*  
Jun-Bao Du, *Beijing*  
Deng-Feng Gao, *Xi'an*  
Chang-Qing Gao, *Beijing*  
Kai-Zheng Gong, *Yangzhou*  
Kai Huang, *Wuhan*  
Bin Jiang, *Beijing*  
Zhi-Yong Li, *Nanjing*  
Tong Liu, *Tianjin*  
Jing-Ping Sun, *Hong Kong*  
Jun Tao, *Guangzhou*  
Malcolm J Underwood, *Hong Kong*  
Song Wan, *Hong Kong*  
Yi Wan, *Xi'an*  
Chi-Ming Wong, *Hong Kong*  
Jian-Bo Wu, *Luzhou*  
Hai-Wei Wu, *Nanjing*  
Yong Xu, *Nanjing*  
Chen-Jiang Ying, *Wuhan*  
Hong-Kun Zhang, *Hangzhou*

Jiu-Chang Zhong, *Shanghai*



**Croatia**

Viktor Culic, *Split*



**Cuba**

Fidel M Caceres-Loriga, *Havana*



**Cyprus**

Christos Eftychiou, *Nicosia*



**Czech Republic**

Pavel Osmancik, *Prague*

Jan Sochman, *Prague*



**Denmark**

Louise L Schierbeck, *Copenhagen NV*

Jacob Tfelt-Hansen, *Copenhagen*

Bo G Winkel, *Copenhagen*



**Egypt**

Mohamed E Fawzy, *Cairo*



**Finland**

Fausto Biancari, *Oulu*

Kjell Nikus, *Tampere*

Jani T Tikkanen, *Oulu*



**France**

Dominique Charron, *Paris*

Joao C Das-Neves-Pereira, *Paris*

Guillaume Leurent, *Rennes*



**Germany**

Helmut Acker, *Essen*

Ralf A Benndorf, *Halle (Saale)*

Niyazi Cebi, *Stade*

Emmanuel Chorianopoulos, *Heidelberg*

Ulrich H Frey, *Essen*

Alexander Ghanem, *Bonn*

Michael Gotzmann, *Bochum*

Takahiro Higuchi, *Würzburg*

Thomas W Jax, *Neuss*

Christoph J Jensen, *Essen*

Beate E Kehrel, *Muenster*

Klaus Kettering, *Frankfurt*

Korff Krause, *Hamburg*

Arnt V Kristen, *Heidelberg*

Philipp C Lurz, *Leipzig*

Thomas Muenzel, *Mainz*

Ulrich Nellessen, *Stendal*

Peter E Ong, *Stuttgart*

Guenter Pilz, *Hausham*

Tienush Rassaf, *Düsseldorf*

Bernhard Rauch, *Ludwigshafen am Rhein*

Sonja Schrepfer, *Hamburg*

Andreas Schuster, *Goettingen*

Guiscard Seeböhm, *Muenster*

Hans-Jürgen Seyfarth, *Leipzig*

Erik Skobel, *Aachen*

Dirk Skowasch, *Bonn*

Gustav Steinhoff, *Rostock*

Michael Steinmetz, *Goettingen*

Theodor Tirilomis, *Goettingen*

Rainer Wessely, *Cologne*



**Greece**

Dimitrios Farmakis, *Athens*

Ignatios Ikonomidis, *Athens*

Theofilos M Kolettis, *Ioannina*

Antigone Lazou, *Thessaloniki*

Konstantinos Letsas, *Athens*

Kosmas I Paraskevas, *Larissa*

Elias Rentoukas, *Athens*

Georgios Tagarakis, *Thessaloniki*

Theodoros Xanthos, *Athens*

Michael Zairis, *Piraeus*



**Hungary**

Gergely Feher, *Pecs*

András Komócsi, *Pécs*

Béla Merkely, *Budapest*

Attila Nemes, *Szeged*

Albert Varga, *Szeged*



**India**

Amitesh Aggarwal, *Delli*

Debasis Das, *Kolkata*

Yatin Mehta, *Gurgaon*

Nikhil Sikri, *Bangalore*



**Iran**

Farid Najafi, *Kermanshah*

Mahdi Najafi, *Tehran*



**Ireland**

Timothy M McGloughlin, *Abu Dhabi*



**Israel**

Robert Dragu, *Haifa*

Ehud Goldhammer, *Haifa*

Aviv Mager, *Petah Tikva*

David Rott, *Tel Hashomer*



**Italy**

Romualdo Belardinelli, *Ancona*

Matteo Bertini, *Ferrara*

Riccardo Bigi, *Milan*

Carlo Bonanno, *Vicenza*

Giuseppe Boriani, *Bologna*

Natale D Brunetti, *Foggia*

Giuseppe Bruschi, *Milan*

Alida LP Caforio, *Padova*

Corrado Carbucicchio, *Milan*

Oronzo Catalano, *Pavia*

Massimo Chello, *Rome*

Quirino Ciampi, *Benevento*

Antonio Cittadini, *Naples*

Anca I Corciu, *Pisa*

Michele Correale, *Foggia*

Michele D'Alto, *Naples*

Fabrizio D'Ascenzo, *Turin*

Giuseppe De Luca, *Novara*

Roberto De Ponti, *Varese*

Fabio Esposito, *Milan*

Pompilio Faggiano, *Brescia*

Khalil Fattouch, *Palermo*

Amalia Forte, *Naples*

Chiara Fraccaro, *Rovigo*

Mario Gaudino, *Rome*

Sandro Gelsomino, *Florence*

Massimo Iacoviello, *Bari*

Massimo Imbriaco, *Napoli*

Ciro Indolfi, *Catanzaro*

Maurizio E Landolina, *Pavia*

Chiara Lazzeri, *Florence*

Jacopo M Legramante, *Rome*

Antonio Loforte, *Bologna*

Rosalinda Madonna, *Chieti*

Olivia Manfrini, *Bologna*

Giancarlo Marenzi, *Milan*

Raffaele Marfella, *Naples*

Giovanni Mariscalco, *Varese*

Franca Di Meglio, *Naples*

Pietro A Modesti, *Florence*

Massimo Napodano, *Padua*

Daria Nurzynska, *Naples*

Claudio Passino, *Pisa*

Salvatore Patanè, *Taormina*

Francesco Perticone, *Catanzaro*

Nunzia R Petix, *Empoli*

Francesco Petrella, *Milan*

Mario Petretta, *Naples*

Carmine Pizzi, *Bologna*

Marco Pocar, *Milan*

Roberto Pola, *Rome*

Francesco Prati, *Rome*

Fabio M Pulcinelli, *Rome*

Andrea Rossi, *Verona*

Andrea Rubboli, *Bologna*

Giovanni Di Salvo, *Naples*

Giuseppe M Sangiorgi, *Rome*

Carlo Setacci, *Siena*

Imad Sheiban, *Verona*

Giuseppe Stabile, *Napoli*

Luca Testa, *Milan*



**Japan**

Eisuke Amiya, *Tokyo*

Ryuichiro Anan, *Miyakonojo*

Xian Wu Cheng, *Nagoya*

Ikuo Fukuda, *Aomori*

Shin-ichiro Hayashi, *Suita*

Atsushi Hirohata, *Okayama*

Toru Hosoda, *Isehara*

Kazuhiro P Izawa, *Kawasaki*

Takatoshi Kasai, *Tokyo*

Hajime Kataoka, *Oita*

Masaya Kato, *Hiroshima*

Tomoko S Kato, *Tokyo*

Atsuhiko Kawamoto, *Kobe*  
 Zhong-Fang Lai, *Kumamoto*  
 Seiichiro Matsuo, *Tokyo*  
 Shin-ichiro Miura, *Fukuoka*  
 Sachio Morimoto, *Fukuoka*  
 Toshiya Muramatsu, *Yokohama*  
 Koichi Sakabe, *Tokyo*  
 Hiroyuki Sakurai, *Chuo-ku*  
 Akira Sato, *Tsukuba*  
 Shinji Satoh, *Fukuoka*  
 Hiroshi Satoh, *Hamamatsu*  
 Akira Sugawara, *Sendai*  
 Isao Taguchi, *Tochigi*  
 Masamichi Takano, *Inzai*  
 Hiroki Teragawa, *Hiroshima*  
 Hiroyasu Ueda, *Osaka*  
 Tadayuki Uetani, *Nagoya*  
 Sho-ichi Yamagishi, *Kurume*  
 Hideya Yamamoto, *Hiroshima*  
 Hiroshi Yoshida, *Kashiwa*



#### Kosovo

Gani Bajraktari, *Prishtina*



#### Malaysia

Harris A Ngow, *Kuantan*



#### Mexico

Erick Alexanderson, *Mexico City*



#### Morocco

Abdenasser Drighil, *Casablanca*



#### Netherlands

Pierfrancesco Agostoni, *Utrecht*  
 Christos V Bourantas, *Rotterdam*  
 Jasper J Brugts, *Rotterdam*  
 Filippo Cademartiri, *Rotterdam*  
 Henricus J Duckers, *Utrecht*  
 Guido Krenning, *Groningen*  
 Frans L Moll, *Utrecht*  
 Martijn C Post, *Nieuwegein*  
 Salah AM Said, *Hengelo*



#### New Zealand

Barry Palmer, *Christchurch*



#### Nigeria

Rufus A Adedoyin, *Ile-Ife*  
 Okechukwu S Ogah, *Ibadan*



#### Norway

Jonas Hallen, *Oslo*

Serena Tonstad, *Oslo*



#### Poland

Maciej Banach, *Lodz*  
 Iwona Cicha, *Erlangen*  
 Grzegorz Gajos, *Krakow*  
 Piotr Jankowski, *Krakow*  
 Maciej K Kurpisz, *Poznan*  
 Katarzyna M Mizia-Stec, *Katowice*  
 Jerzy Sacha, *Opole*  
 Sebastian Szmit, *Warsaw*



#### Portugal

Rui A Providência, *Coimbra*  
 Fernando Ribeiro, *Aveiro*



#### Saudi Arabia

T Albacker, *Riyadh*  
 Mouaz H Al-Mallah, *Riyadh*



#### Singapore

Koon-Hou Mak, *Singapore*  
 Kian Keong Poh, *Singapore*  
 Samuel SW Tay, *Singapore*



#### Slovenia

Mitja Lainscak, *Golnik*



#### South Korea

Kyung-Mook Choi, *Seoul*  
 Young-Hoon Jeong, *Jinju-si*  
 Hyo-Soo Kim, *Seoul*  
 Cheorl-Ho Kim, *Suwon*  
 Seong Hwan Kim, *Ansan*  
 Young-Guk Ko, *Seoul*  
 Gi-Byoung Nam, *Seoul*  
 Jong-Min Song, *Seoul*  
 Darren R Williams, *Gwangju*



#### Spain

Ezequiel Alvarez, *Santiago de Compostela*  
 Miguel A Arias, *Toledo*  
 Alberto B Berenguer, *Valencia*  
 Alberto Dominguez-Rodriguez, *Tenerife*  
 Julio J Ferrer-Hita, *La Laguna*  
 Joaquin De Haro, *Madrid*  
 Raul Moreno, *Madrid*  
 Ivan J Nunez-Gil, *Madrid*  
 Jesus Millan Nuñez-Cortes, *Madrid*  
 Jesus Peteiro, *A Coruna*  
 Aurelio Quesada, *Valencia*  
 Manel Sabate, *Barcelona*  
 Rocio Toro, *Cadiz*  
 Jose M Valdivielso, *Lleida*



#### Switzerland

Paul Erne, *Zurich*  
 Richard Kobza, *Luzern*



#### Thailand

Nipon Chattipakorn, *Chiang Mai*  
 Rungroj Kittayaphong, *Bangkok*  
 Yaowapa Maneerat, *Bangkok*



#### Turkey

Bahri Akdeniz, *Izmir*  
 Ismail Biyik, *Usak*  
 Murat Can, *Zonguldak*  
 Turgay Celik, *Ankara*  
 Yengi U Celikyurt, *Kocaeli*  
 Omer F Dogan, *Adana*  
 Dursun Duman, *Istanbul*  
 Nihan Erdogan, *Istanbul*  
 Tevfik F Ilgenli, *Konya*  
 Fehmi Kacmaz, *Sanliurfa*  
 Kaan Kirali, *Istanbul*  
 Mehmet Ozaydin, *Isparta*  
 Murat Ozeren, *Mersin*



#### United Arab Emirates

Nicolas Christoforou, *Abu Dhabi*



#### United Kingdom

Suneil K Aggarwal, *London*  
 Abdallah Al-Mohammad, *Sheffield*  
 Umberto Benedetto, *Papworth*  
 Christopher J Boos, *Poole*  
 Geoffrey Burnstock, *London*  
 Halina Dobrzynski, *Manchester*  
 Lyndon M Evans, *Cardiff*  
 Matthew Ginks, *Oxford*  
 Cathy M Holt, *Manchester*  
 Jamie Y Jeremy, *Bristol*  
 Muhammed Z Khawaja, *London*  
 Babu Kunadian, *Liverpool*  
 Najma Latif, *Harefield*  
 Saagar Mahida, *leeds*  
 Mamas Mamas, *Manchester*  
 Pankaj K Mishra, *Wolverhampton*  
 Shahzad G Raja, *London*  
 Sudhir Rathore, *Camberley*  
 Ganesh N Shivu, *Ravenshead*  
 Neil A Turner, *Leeds*



#### United States

Ola Akinboboye, *New York*  
 Arshad Ali, *North Platte*  
 Piero Anversa, *Boston*  
 Ehrin J Armstrong, *Denver*  
 Wilbert S Aronow, *Valhalla*  
 Basem Azab, *Staten Island*  
 Alison E Baird, *Brooklyn*



Saravanan Balamuthusamy, *Tucson*  
Hendrick B Barner, *Saint Louis*  
Marion A Hofmann Bowman, *Chicago*  
Danny Chu, *Pittsburgh*  
Undurti N Das, *Federal Way*  
Jose M Dizon, *New York*  
Khalid M Elased, *Dayton*  
Sammy Elmariah, *Boston*  
James D Fett, *Lacey*  
Don A Gabriel, *Chapel Hill*  
Nisha J Garg, *Galveston*  
Cynthia J Girman, *North Wales*  
Mardi Gomberg-Maitland, *Chicago*  
Robert G Gourdie, *Roanoke*  
Abdul Hakeem, *Little Rock*  
M Brennan Harris, *Williamsburg*  
Robert C Hendel, *Miami*  
Gang Hu, *Baton Rouge*  
Antony Innasimuthu, *Pittsburgh*  
Sabzali Javadov, *San Juan*  
Shahrokh Javaheri, *Mason*  
Kai Jiao, *Birmingham*  
Paul Kurlansky, *New York*  
Yulong Li, *Omaha*  
Ji Li, *Buffalo*

Zhongmin Li, *Sacramento*  
Joseph R Libonati, *Philadelphia*  
Steven E Lipshultz, *Detroit*  
Yi-Hwa Liu, *New Haven*  
Suvitesh Luthra, *Boston*  
Anastasios Lymperopoulos, *Fort Lauderdale*  
Shingo Maeda, *Philadelphia*  
Jawahar L Mehta, *Little Rock*  
Jeffrey W Moses, *New York*  
Jamal S Mustafa, *Morgantown*  
Hiroschi Nakagawa, *Oklahoma City*  
Navin C Nanda, *Birmingham*  
Surya Nauli, *Toledo*  
Siyamek Neragi-Miandoab, *New York*  
Tien MH Ng, *Los Angeles*  
Chee Yuan Ng, *Loma Linda*  
Gustavo S Oderich, *Rochester*  
Jin O-Uchi, *Philadelphia*  
Mohammed S Razzaque, *Boston*  
Jun Ren, *Laramie*  
Rahman Shah, *Memphis*  
Nian-Qing Shi, *Madison*  
Boris Z Simkhovich, *Los Angeles*  
Philippe Sucusky, *Notre Dame*  
Junhui Sun, *Bethesda*

Tahir Tak, *Rochester*  
George W Vetrovec, *Richmond*  
Jiang W, *Durham*  
Mingyi Wang, *Baltimore*  
Lu Wang, *Boston*  
Howard S Weber, *Hershey*  
Giora Weisz, *New York*  
Monte S Willis, *Chapel Hill*  
Michael S Wolin, *Valhalla*  
Nathan D Wong, *Irvine*  
Lai-Hua Xie, *Newark*  
Meifeng Xu, *Cincinnati*  
Zequan Yang, *Charlottesville*  
Midori A Yenari, *San Francisco*  
Li Zhang, *Wynnewood*



#### **Uruguay**

Victor Dayan, *Montevideo*  
Juan C Grignola, *Montevideo*



#### **Venezuela**

Diego F Davila, *Merida*

**REVIEW**

- 773 Cardiac magnetic resonance imaging: Which information is useful for the arrhythmologist?

*De Maria E, Aldrovandi A, Borghi A, Modonesi L, Cappelli S*

**ORIGINAL ARTICLE****Retrospective Study**

- 787 Clinical outcomes of tricuspid valve repair accompanying left-sided heart disease

*Azarnoush K, Nadeemy AS, Pereira B, Leeser MA, Lambert C, Azhari A, Eljezi V, Dauphin N, Geoffroy E, Camilleri L*

**LETTERS TO THE EDITOR**

- 794 Mining twitter to understand the smoking cessation barriers

*Krittanawong C, Wang Z*

**ABOUT COVER**

Editorial Board Member of *World Journal of Cardiology*, Peter E Ong, MD, Senior Scientist, Department of Cardiology, Robert Bosch Krankenhaus, Stuttgart 70376, Germany

**AIM AND SCOPE**

*World Journal of Cardiology* (*World J Cardiol*, *WJC*, online ISSN 1949-8462, DOI: 10.4330) is a peer-reviewed open access journal that aims to guide clinical practice and improve diagnostic and therapeutic skills of clinicians.

*WJC* covers topics concerning arrhythmia, heart failure, vascular disease, stroke, hypertension, prevention and epidemiology, dyslipidemia and metabolic disorders, cardiac imaging, pediatrics, nursing, and health promotion. Priority publication will be given to articles concerning diagnosis and treatment of cardiology diseases. The following aspects are covered: Clinical diagnosis, laboratory diagnosis, differential diagnosis, imaging tests, pathological diagnosis, molecular biological diagnosis, immunological diagnosis, genetic diagnosis, functional diagnostics, and physical diagnosis; and comprehensive therapy, drug therapy, surgical therapy, interventional treatment, minimally invasive therapy, and robot-assisted therapy.

We encourage authors to submit their manuscripts to *WJC*. We will give priority to manuscripts that are supported by major national and international foundations and those that are of great basic and clinical significance.

**INDEXING/ABSTRACTING**

*World Journal of Cardiology* is now indexed in Emerging Sources Citation Index (Web of Science), PubMed, and PubMed Central.

**FLYLEAF**

I-IV Editorial Board

**EDITORS FOR THIS ISSUE**

**Responsible Assistant Editor:** *Xiang Li*  
**Responsible Electronic Editor:** *Ya-Jing Lu*  
**Proofing Editor-in-Chief:** *Lian-Sheng Ma*

**Responsible Science Editor:** *Fang-Fang Ji*  
**Proofing Editorial Office Director:** *Xiu-Xia Song*

**NAME OF JOURNAL**  
*World Journal of Cardiology*

**ISSN**  
ISSN 1949-8462 (online)

**LAUNCH DATE**  
December 31, 2009

**FREQUENCY**  
Monthly

**EDITORS-IN-CHIEF**  
**Jian-Jun Li, MD, PhD, Professor**, Center for Coronary Artery Disease, Fu Wai Cardiovascular Hospital, Chinese Academy of Medical Science, Beijing 100037, China

**Giuseppe De Luca, PhD**, Assistant Professor, Department of Cardiology, Piedmont University, Novara 28100, Italy

**Nathan D Wong, FACC, FAHA, PhD, Director, Professor**, Heart Disease Prevention Program, Division of Cardiology, Department of Medicine, University of California, Irvine, CA 92629, United States

sity of California, Irvine, CA 92629, United States

**EDITORIAL BOARD MEMBERS**  
All editorial board members resources online at <http://www.wjgnet.com/1949-8462/editorialboard.htm>

**EDITORIAL OFFICE**  
Xiu-Xia Song, Director  
*World Journal of Cardiology*  
Baishideng Publishing Group Inc  
7901 Stoneridge Drive, Suite 501, Pleasanton, CA 94588, USA  
Telephone: +1-925-2238242  
Fax: +1-925-2238243  
E-mail: [editorialoffice@wjgnet.com](mailto:editorialoffice@wjgnet.com)  
Help Desk: <http://www.f6publishing.com/helpdesk>  
<http://www.wjgnet.com>

**PUBLISHER**  
Baishideng Publishing Group Inc  
7901 Stoneridge Drive, Suite 501, Pleasanton, CA 94588, USA  
Telephone: +1-925-2238242  
Fax: +1-925-2238243  
E-mail: [bpgoffice@wjgnet.com](mailto:bpgoffice@wjgnet.com)  
Help Desk: <http://www.f6publishing.com/helpdesk>  
<http://www.wjgnet.com>

**PUBLICATION DATE**  
October 26, 2017

**COPYRIGHT**  
© 2017 Baishideng Publishing Group Inc. Articles published by this Open-Access journal are distributed under the terms of the Creative Commons Attribution Non-commercial License, which permits use, distribution, and reproduction in any medium, provided the original work is properly cited, the use is non commercial and is otherwise in compliance with the license.

**SPECIAL STATEMENT**  
All articles published in journals owned by the Baishideng Publishing Group (BPG) represent the views and opinions of their authors, and not the views, opinions or policies of the BPG, except where otherwise explicitly indicated.

**INSTRUCTIONS TO AUTHORS**  
<http://www.wjgnet.com/bpg/gerinfo/204>

**ONLINE SUBMISSION**  
<http://www.f6publishing.com>

## Cardiac magnetic resonance imaging: Which information is useful for the arrhythmologist?

Elia De Maria, Annachiara Aldrovandi, Ambra Borghi, Letizia Modonesi, Stefano Cappelli

Elia De Maria, Annachiara Aldrovandi, Ambra Borghi, Letizia Modonesi, Stefano Cappelli, Cardiology Unit, Ramazzini Hospital, 41012 Carpi (Modena), Italy

**Author contributions:** De Maria E and Aldrovandi A contributed to concept/design, data analysis/interpretation, manuscript drafting, critical revision and approval; Borghi A, Modonesi L and Cappelli S contributed to manuscript drafting, critical revision and approval.

**Conflict-of-interest statement:** No potential conflicts of interest exist.

**Open-Access:** This article is an open-access article which was selected by an in-house editor and fully peer-reviewed by external reviewers. It is distributed in accordance with the Creative Commons Attribution Non Commercial (CC BY-NC 4.0) license, which permits others to distribute, remix, adapt, build upon this work non-commercially, and license their derivative works on different terms, provided the original work is properly cited and the use is non-commercial. See: <http://creativecommons.org/licenses/by-nc/4.0/>

**Manuscript source:** Invited manuscript

**Correspondence to:** Elia De Maria, MD, PhD, Chief of Arrhythmology Lab, Cardiology Unit, Ramazzini Hospital, Via Molinari 1, 41012 Carpi (Modena), Italy. [e.demaria@inwind.it](mailto:e.demaria@inwind.it)  
Telephone: +39-5-9659320  
Fax: +39-5-9659387

Received: April 12, 2017

Peer-review started: April 16, 2017

First decision: May 9, 2017

Revised: May 23, 2017

Accepted: June 12, 2017

Article in press: June 13, 2017

Published online: October 26, 2017

### Abstract

Cardiac magnetic resonance (CMR) is a non-invasive, non-ionizing, diagnostic technique that uses magnetic fields,

radio waves and field gradients to generate images with high spatial and temporal resolution. After administration of contrast media (*e.g.*, gadolinium chelate), it is also possible to acquire late images, which make possible the identification and quantification of myocardial areas with scar/fibrosis (late gadolinium enhancement, LGE). CMR is currently a useful instrument in clinical cardiovascular practice for the assessment of several pathological conditions, including ischemic and non-ischemic cardiomyopathies and congenital heart disease. In recent years, its field of application has also extended to arrhythmology, both in diagnostic and prognostic evaluation of arrhythmic risk and in therapeutic decision-making. In this review, we discuss the possible useful applications of CMR for the arrhythmologist. It is possible to identify three main fields of application of CMR in this context: (1) arrhythmic and sudden cardiac death risk stratification in different heart diseases; (2) decision-making in cardiac resynchronization therapy device implantation, presence and extent of myocardial fibrosis for left ventricular lead placement and cardiac venous anatomy; and (3) substrate identification for guiding ablation of complex arrhythmias (atrial fibrillation and ventricular tachycardias).

**Key words:** Cardiac magnetic resonance; Ablation; Sudden cardiac death; Cardiac resynchronization therapy; Arrhythmic risk stratification

© The Author(s) 2017. Published by Baishideng Publishing Group Inc. All rights reserved.

**Core tip:** Cardiac magnetic resonance (CMR) is a non-ionizing diagnostic technique that generates images with high spatial and temporal resolution. After administration of contrast media (*e.g.*, gadolinium chelate), it is also possible to acquire late images, which make possible the identification and quantification of myocardial areas with scar/fibrosis (late gadolinium enhancement). In recent years, its field of application has extended to arrhythmology, both in diagnostic and prognostic evaluation of arrhythmic



risk and in therapeutic decision-making. In this review, we discuss the applications of CMR for the arrhythmologist. It is possible to identify three main fields of application in this context: (1) arrhythmic and sudden cardiac death risk stratification; (2) decision making in cardiac resynchronization therapy device implantation; and (3) substrate identification for guiding ablation of complex arrhythmias.

De Maria E, Aldrovandi A, Borghi A, Modonesi L, Cappelli S. Cardiac magnetic resonance imaging: Which information is useful for the arrhythmologist? *World J Cardiol* 2017; 9(10): 773-786 Available from: URL: <http://www.wjgnet.com/1949-8462/full/v9/i10/773.htm> DOI: <http://dx.doi.org/10.4330/wjc.v9.i10.773>

## INTRODUCTION

Cardiac magnetic resonance (CMR) is a non-invasive, non-ionizing, diagnostic technique that uses magnetic fields, radio waves and field gradients to generate images with high spatial and temporal resolution and without limitations due to the acoustic window, compared to other imaging techniques<sup>[1,2]</sup>. It provides a very precise "in vivo" tissue characterization through the different quantity of protons in different chemical environments, identifying the presence of fat, water (oedema), blood, fibrosis and scar<sup>[1,2]</sup>. In particular, after the administration of contrast media (*e.g.*, gadolinium chelate), it is possible to acquire late images which make possible the identification and quantification of myocardial areas with scar/fibrosis (late gadolinium enhancement, LGE)<sup>[1]</sup>. First used as a research tool, CMR has become a daily instrument in clinical cardiovascular practice for the assessment of several pathological conditions, including ischemic and non-ischemic cardiomyopathies and congenital heart disease<sup>[1]</sup>.

In recent years, its field of application has also extended to arrhythmology, both in diagnostic and prognostic evaluation of arrhythmic risk and in therapeutic decision-making. It is possible to identify three main fields of application of CMR in arrhythmology: (1) arrhythmic and sudden cardiac death (SCD) risk stratification in different heart diseases; (2) decision-making in cardiac resynchronization therapy (CRT) device implantation [cardiac vein anatomy, scar burden and left ventricular (LV) lead placement]; and (3) substrate identification for guiding ablation of complex arrhythmias [atrial fibrillation and ventricular tachycardias (VTs)].

In this review, we discuss the possible useful applications of CMR that can help the arrhythmologist in the management of patients with this broad spectrum of arrhythmological conditions.

## ARRHYTHMIC AND SCD RISK STRATIFICATION

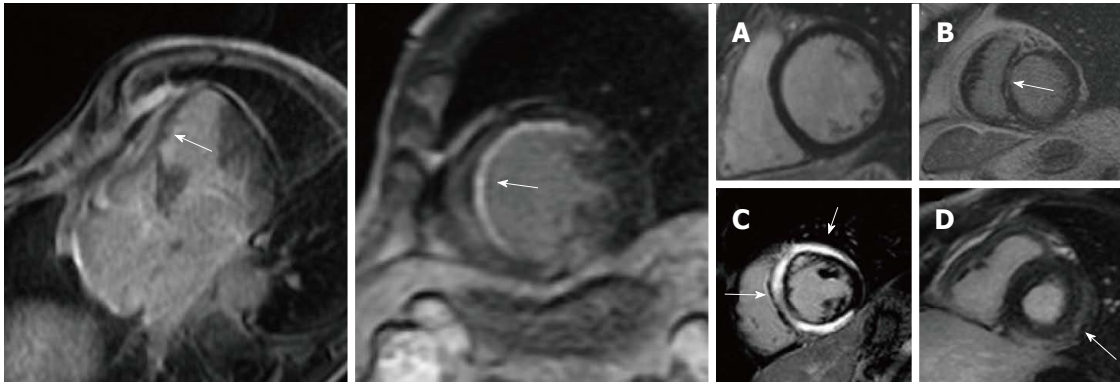
SCD is responsible for 25% of 17 million cardiovascular

deaths every year in the world. The great majority of these deaths (> 90%) have an arrhythmic origin, namely, VT degenerating into ventricular fibrillation (VF), primary VF or torsade de pointes<sup>[3]</sup>.

The underlying causes vary in different age groups, with channelopathies and cardiomyopathies prevailing in young people, while degenerative diseases are more common in older people. In general, the main causes are: Acute and chronic coronary heart disease (75%-80%); cardiomyopathies (10%-15%); valvular, inflammatory and infiltrative diseases (5%-10%); and molecular/genetic conditions (< 5%)<sup>[3]</sup>. Prevention can be made with pharmacological or device therapy. This latter consists in ICD (implantable cardioverter defibrillator) implantation that is recommended in different groups of high risk patients with ischemic or non-ischemic heart diseases. However, risk stratification is sometimes very challenging, especially in primary prevention. Current approaches have limited sensitivity and specificity in many clinical settings, identifying only a very small portion of future cardiac arrests with sufficient precision to justify ICD therapy<sup>[3,4]</sup>. Moreover, ICD implantation is not without complications and many patients will not to benefit even if implanted according to guidelines<sup>[3,4]</sup>. Lately, scientific interest is pointing to a polyparametric approach, using a combination of different risk markers to better dichotomize high and low risk patients<sup>[4,5]</sup>. In this context, CMR can give its contribution, especially through the identification and quantification of myocardial areas with scar and fibrosis. Ventricular fibrosis is an important substrate for the genesis of ventricular arrhythmias (VA): Within fibrotic tissue the slow and heterogeneous conduction favors re-entrant circuits, increasing vulnerability to VT and VF<sup>[6-8]</sup>.

### **Dilated ischemic and non-ischemic cardiomyopathies**

A left ventricular ejection fraction (LVEF) of 35% or less is the major determinant of ICD implantation for SCD primary prevention in patients with ischemic or nonischemic LV dysfunction<sup>[3]</sup>. Even in the recent European Society of Cardiology (ESC) guidelines<sup>[3]</sup>, the only suggested markers of arrhythmic risk to guide ICD implant are LVEF and NYHA functional class (Table 1). However, it is now well-known that ejection fraction alone has limited sensitivity and specificity as a risk marker for SCD, because it is not able to distinguish the risk of sudden death from death caused by heart failure or other non-cardiac diseases. Subsequently, many patients implanted for primary prevention according to current guidelines will have little benefit from their ICD, with a low rate of appropriate ICD therapy (2%-4%/year)<sup>[9]</sup>, while they can suffer from side effects (even > 10%/year overall), in particular inappropriate shocks, lead failure and infections<sup>[10,11]</sup>. On the other side, many patients who are at risk of SCD are missed when using only LVEF, because the largest part of sudden arrhythmic death patients have only mildly depressed ejection fraction<sup>[9,12,13]</sup>. Anyway, the substrates of SCD are particularly complex, so it is unlikely for a single test to achieve significantly better predictive accuracy than LVEF. To overcome this



**Figure 1** Late gadolinium-enhanced cardiac magnetic resonance images of ischemic (left panel) and non-ischemic (right panel) dilated cardiomyopathy. In ischemic cardiomyopathy LGE has a subendocardial or transmural distribution in myocardial segments following a coronary artery. In non-ischemic etiology, it shows a "midwall" pattern (panel B, C) or subepicardial distribution (panel D). LGE: Late gadolinium enhancement.

**Table 1** Current European Society of Cardiology recommendations for implantable cardioverter defibrillator implantation for primary prevention in patients with ischemic and non-ischemic left ventricular dysfunction

Recommendations
Class I: ICD therapy is recommended to reduce SCD in patients with symptomatic HF (NYHA class II–III) and LVEF $\leq 35\%$ after $\geq 3$ mo of optimal medical therapy who are expected to survive for at least 1 yr with good functional status
Level of evidence A: Ischemic etiology (at least 6 wk after myocardial infarction)
Level of evidence B: Non-ischemic etiology

From ref. [3]. ICD: Implantable cardioverter defibrillator; SCD: Sudden cardiac death; LVEF: Left ventricular ejection fraction; HF: Heart failure; NYHA: New York Heart Association.

limitation, a combination of markers has been proposed<sup>[9]</sup>, for example, combining ejection fraction with different tests that investigate different arrhythmic mechanisms (LGE-CMR, T-wave alternans, programmed ventricular stimulation, evaluation of autonomic tone, etc.).

The pathophysiology of VA in structural heart diseases is due - in most cases - to re-entrant circuits. Electrophysiological studies and anatomic mapping have highlighted, in these cases, the presence of extensive areas where the electrical potentials are absent (indicating the absence of viable myocardium, scar and fibrosis) and areas with low-amplitude, fragmented, late potentials compared to healthy myocardium (conduction with high anisotropy and low speed)<sup>[6-8]</sup>. The classic arrhythmogenic substrate of re-entry arrhythmias is represented by a mix of these areas, with inflammation often acting as a trigger. Thanks to its ability to identify both areas of myocardial scar/fibrosis and inflammation, CMR can provide essential information in this context<sup>[8,9]</sup>.

Myocardial fibrosis can be evaluated with the LGE imaging technique. Gadolinium-based contrast agents are washed out by viable myocytes and accumulate in extracellular spaces, such as areas of fibrotic tissue, where cardiomyocytes have been replaced by collagen, or in areas of acutely damaged myocardium<sup>[7,8]</sup>. The LGE imaging techniques have been validated by histology in several studies with animal models<sup>[14]</sup>. To date, due to the high spatial resolution (approximately 2 mm), it is the most accurate method to detect myocardial fibrosis and to precisely identify its location and extension, distinguishing

in particular endocardial, epicardial or transmural involvement. The pattern of LGE distribution is particularly useful in the differential diagnosis between ischemic and non-ischemic fibrosis<sup>[15-17]</sup>. Virtually all patients with ischemic cardiomyopathy have LGE, presenting with a subendocardial or transmural distribution in myocardial segments following a coronary artery territory<sup>[16]</sup>; the most common pattern consists of core dense fibrosis within a heterogeneous peri-infarct (gray) zone, indicating the presence of both viable and nonviable myocardium<sup>[9]</sup>. On the other side, in non-ischemic dilated cardiomyopathy fibrosis is present only in about 30%-40% of cases and it shows a "midwall" pattern, mostly located in the interventricular septum<sup>[17]</sup> (Figure 1). From an etiological and therapeutic point of view, this is a very important issue: non-ischemic cardiomyopathy on the basis of a traditional definition (clinical history, ECG, echocardiogram and coronary angiography) may be reclassified as ischemic cardiomyopathy thanks to CMR in about 20% of cases<sup>[15]</sup>.

Numerous studies have demonstrated that LGE is a powerful predictor of VA events both in ischemic and non-ischemic cardiomyopathy patients, with moderately to severely depressed LVEF<sup>[18-21]</sup>. An overview of 19 studies, all with an arrhythmic endpoint, for a total of 2692 patients, indicated that the presence and extension of myocardial fibrosis, documented by LGE, predicted VA both in ischemic and non-ischemic diseases, even in patients with only mildly depressed LVEF<sup>[9,18,19]</sup>. Furthermore, CMR increased the negative predictive

value for SCD prediction to 95%<sup>[9,20-22]</sup>.

Taking into account only non-ischemic dilated cardiomyopathy, the cut-off for risk definition was the presence or absence of fibrosis and its midwall location. These markers were successfully used to dichotomize patients at high vs low risk of ventricular arrhythmic events<sup>[23-32]</sup>. The largest prospective study in non-ischemic cardiomyopathy by Gulati *et al*<sup>[26]</sup> included 472 patients followed for > 5 years. In this paper midwall fibrosis was an independent risk factor for ventricular tachyarrhythmias [hazard ratio (HR) = 4.61], while combining ventricular fibrosis with LVEF significantly improved risk reclassification for the arrhythmic endpoint. A recent meta-analysis of 29 studies including 2948 patients with idiopathic dilated cardiomyopathy<sup>[32,33]</sup> confirmed that the presence of ventricular fibrosis, identified by LGE, was an important risk factor for arrhythmic endpoints (SCD, VT, VF and ICD therapies): Clinical events occurred in 21% of LGE positive vs 4.7% of LGE negative patients, with an annual event rate of 6.9% and 1.6%, respectively.

In ischemic dilated cardiomyopathy, the issue is more complex: The majority of studies evaluating total LGE or "gray zone" (peri-infarct area) reported a statistically significant dose-response effect for arrhythmic risk, with larger and more heterogeneous scar associated with the higher risk of VA during follow-up<sup>[34-39]</sup>. Currently, there is not a definite cut-off value of fibrosis/scar extent to adequately differentiate patients at high vs low risk of arrhythmic events, especially in ischemic etiology<sup>[18]</sup>. The presence of a large amount of ventricular fibrosis/scar has been generally used as a marker of higher risk. However, a great variety of analysis methods and diagnostic thresholds exists<sup>[34-39]</sup>: Standardization of LGE-CMR should be a target to reach before spreading practical use of this technique for arrhythmic risk stratification. Moreover, no randomized study has been concluded so far: The DETERMINE study<sup>[40]</sup> was planned to demonstrate the role of LGE-CMR in decision-making for ICD implantation in patients with ischemic cardiomyopathy, but it was prematurely terminated due to a low rate of patient enrollment.

Even with the above limitations, a polyparametric approach, using a combination of different risk markers (including LGE-CMR), could help to refine risk stratification in at least two subsets of patients who are not adequately assessed by current guidelines<sup>[9]</sup>.

The first group is represented by patients with LVEF less than 35% and high risk of death due to heart failure or non-cardiac causes. In this setting, the absence of LGE-CMR (non-ischemic etiology) or a small extension of fibrosis/scar (ischemic etiology), especially if coupled with negative T-wave alternans test, identifies patients with a relatively low risk of sudden arrhythmic death (about 1%/year) for whom ICD implantation should be critically considered because they will hardly have a benefit<sup>[9,21,22,32]</sup>.

The second group includes patients with LVEF of 35%-50% and high risk of SCD defined by: (1) presence

or high burden of fibrosis on LGE-CMR; (2) VT/VF inducibility by programmed ventricular stimulation in post-infarction etiology; and (3) lamin A/C pathological mutation associated with familial sudden death in idiopathic cardiomyopathy. For these patients, even if the current guidelines do not recommend the use of ICD, such a therapy could be critically evaluated, discussed and offered case by case<sup>[9,37,38]</sup>.

Finally, a small portion of patients without LGE at CMR will suffer from sudden death, especially in non-ischemic disease. LGE imaging is not suited to detect diffuse fibrosis that may be present in idiopathic dilated cardiomyopathy. New imaging techniques, such as T1 mapping, are able to detect and quantify diffuse fibrosis by means of extracellular volume fraction and preliminary data show that this pattern is associated with worse outcome in non-ischemic patients<sup>[41]</sup>.

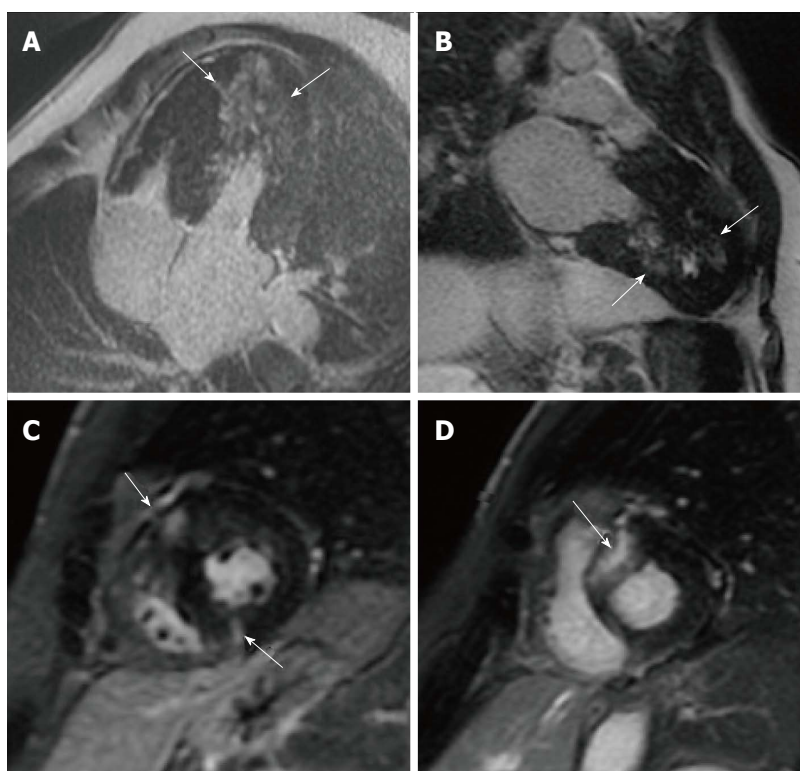
Currently, neither American nor European guidelines support CMR as a first-line tool for risk stratification in dilated cardiomyopathies, so further studies are needed to define its role in this context.

### **Hypertrophic cardiomyopathy**

Hypertrophic cardiomyopathy (HCM) is the most common genetic cardiomyopathy and cause of SCD in young people, including competitive athletes. It is caused by mutations in genes encoding cardiac sarcomere proteins and has a prevalence of 1:500 in the general population<sup>[42]</sup>. HCM is defined by the presence of unexplained LV hypertrophy (wall thickness  $\geq 15$  mm), associated with non-dilated ventricular chambers, in the absence of other cardiac or systemic diseases that might cause hypertrophy<sup>[42,43]</sup>. Hypertrophied myocytes are arranged in a chaotic architecture with increased extracellular matrix<sup>[42]</sup>. The myocardium may also present ischemic areas, caused by microvasculature obstruction, with replacement fibrosis and scar<sup>[42-44]</sup>. This modified cardiac structure predisposes to the risk of malignant VA such as VT and VF<sup>[42,43]</sup>.

SCD represents the most feared complication, occurring in about 5% of patients<sup>[43,44]</sup>. In patients with HCM, at high risk for SCD, ICD reduces mortality rate to 0.5% per year<sup>[44]</sup>. A primary prevention risk model has been proposed to identify high risk patients and guide ICD implant<sup>[43,44]</sup>, based on: (1) family history of premature HCM-related SCD, in close or multiple relatives; (2) unexplained non-reflex syncope, particularly if recent and in young patients; (3) nonsustained VTs on ambulatory ECG, particularly if multiple, repetitive or prolonged; (4) hypotensive or attenuated blood pressure in response to exercise; and (5) extreme hypertrophy (wall thickness  $\geq 30$  mm). Although current risk factor model is effective, not all high-risk patients are identified and the absence of conventional risk factors does not eliminate the risk of SCD.

In this context, CMR is increasingly considered an important tool, in particular for the evaluation of fibrotic areas (LGE-CMR) and wall thickness<sup>[44]</sup>. Moreover, it allows more precise characterization of the phenotype,



**Figure 2** Late gadolinium enhancement patterns in hypertrophic cardiomyopathy patients. A: LGE in the lateral wall (small arrows) and in the interventricular ventricular septum; B: LGE in the LV apex and inferior wall; C: LGE localized to the insertion area of the RV wall into the anterior and posterior ventricular septum; D: Transmurular LGE involving the ventricular septum. LGE: Late gadolinium enhancement.

which helps to differentiate HCM from other causes of LV hypertrophy.

Approximately 50%-60% of HCM patients demonstrate LGE-CMR which, when present, occupies on average 10% of the LV myocardial mass. LGE can be observed in any location or distribution, although most frequently in the ventricular septum and free wall (> 30% of patients), with mid-myocardial distribution, and less often involving the apex and the right ventricular insertion into ventricular septum<sup>[42]</sup> (Figure 2). Moreover, patients with LGE have greater maximal LV wall thickness and LV mass index than patients without<sup>[43]</sup>. A large number of studies demonstrated that the presence of LGE-CMR identifies areas of myocardial fibrosis where life-threatening VA can originate and is associated with a significant higher risk of SCD, even in patients without conventional risk factors<sup>[45-50]</sup>. LGE extension, expressed as a percentage of myocardial mass, correlates with the risk of developing life-threatening VA, in particular if LGE exceeds 15% of LV mass<sup>[50]</sup>. On the contrary, patients without LGE have a low arrhythmic risk and can be reassured.

CMR also enables the identification of other high-risk subsets of patients such as those with massive LV hypertrophy and apical aneurysms (the latter being a subgroup at increased risk for VA and thromboembolic stroke)<sup>[51,52]</sup>. Notably apical HCM may be overlooked by echocardiography, while CMR can precisely visualize apical segments and detect hypertrophy and aneurysms.

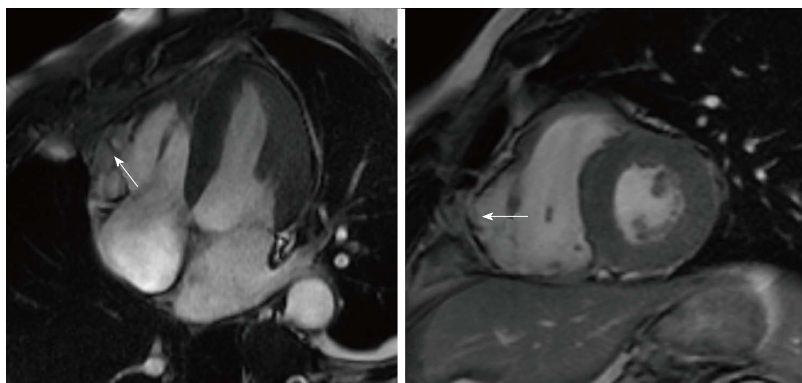
Current schemes for SCD risk determination, such

as American algorithm<sup>[51]</sup> and ESC risk calculator<sup>[53]</sup>, are not completely effective and precise in risk evaluation. CMR, instead, has shown to improve stratification, providing additional information in patients for whom the current markers underestimate the risk (for example, young asymptomatic patients without conventional risk factors but with LGE) and in patients for whom decision-making about ICD implantation is difficult and ambiguous (for example, patients with a single risk factor and at intermediated risk), and potentially acting as an "arbitrator". Anyway, at the moment, neither American nor European guidelines support CMR as a first-line tool for risk stratification in HCM<sup>[51,53]</sup>.

### **Arrhythmogenic cardiomyopathy**

Arrhythmogenic cardiomyopathy (AC) is a group of heart muscle disease clinically characterized by life-threatening VA and pathologically by a progressive dystrophy of the ventricular myocardium with fibro-fatty replacement<sup>[54,55]</sup>. AC affects mostly young males < 40 years old. Its estimated prevalence ranges between 1:2000 and 1:5000, therefore it is considered among rare diseases<sup>[54,55]</sup>. It is mostly caused by autosomal dominant genetic mutations (with incomplete penetrance and variable expressivity) of desmosomal proteins like desmoplakin and plakoglobin<sup>[56,57]</sup>. The desmosomal complex, situated in the cardiac intercalated disk, is responsible for tissue strength and stability, binding cells to one another. Consequently, a defective desmosomal complex can cause cell loss with fibro-fatty tissue





**Figure 3 Subtricuspid involvement in arrhythmogenic right ventricular cardiomyopathy.** Dilated right ventricle with bulging of the subtricuspid region (arrow). The right ventricular apex is relatively spared.

replacement<sup>[58-60]</sup>. In its most common form the disease affects the right ventricle, but in a minority of patients it may affect both ventricles or only the left ventricle, thus supporting the use of the more general term AC<sup>[54,55]</sup>. Clinical manifestations differ in the different phases of the disease, from asymptomatic patients to patients with heart failure and VA or SCD<sup>[56-60]</sup>. AC is a major cause of sudden death in young and athletes, with VT and VF occurring at any stage<sup>[54-61]</sup>.

Considering the most frequent variant, arrhythmogenic right ventricular cardiomyopathy (ARVC), the diagnosis is based on a score obtained from the assessment of several parameters combined into major and minor criteria<sup>[56-59]</sup>, as there is no single gold standard diagnostic test. CMR has an important role for a comprehensive and precise assessment of right ventricular volumes, function and kinesis<sup>[56-59]</sup>. Typically, in ARVC myocardial disarray involves the entire ventricular wall, in particular the subtricuspid region and the right ventricle outflow tract ("triangle of dysplasia"), leading to aneurysm formation. In these regions wall motion abnormalities (akinesia or dyskinesia) and aneurysms can be detected by CMR, representing one of the criteria for diagnosis (Figure 3). The usefulness of CMR to detect fatty replacement or fibrosis is limited because the right ventricle has a thin wall and the differentiation between normal epicardial and intramyocardial infiltration is challenging. Therefore, to date, tissue characterization by CMR is not considered in the diagnostic work-up for ARVC<sup>[54-59]</sup>. Arrhythmic risk stratification in ARVC is based on multiparametric evaluation mainly based on clinical variables; patients at higher risk indicated for ICD implantation are those resuscitated after cardiac arrest, those with sustained and unstable monomorphic VT or exercise-induced unexplained syncope<sup>[60,61]</sup>. The role of CMR for risk stratification in ARVC is marginal, although significant: the extension of the disease to the left ventricle, identified by LGE-CMR, seems to be associated with a worse arrhythmic outcome and must be looked for<sup>[60-62]</sup>.

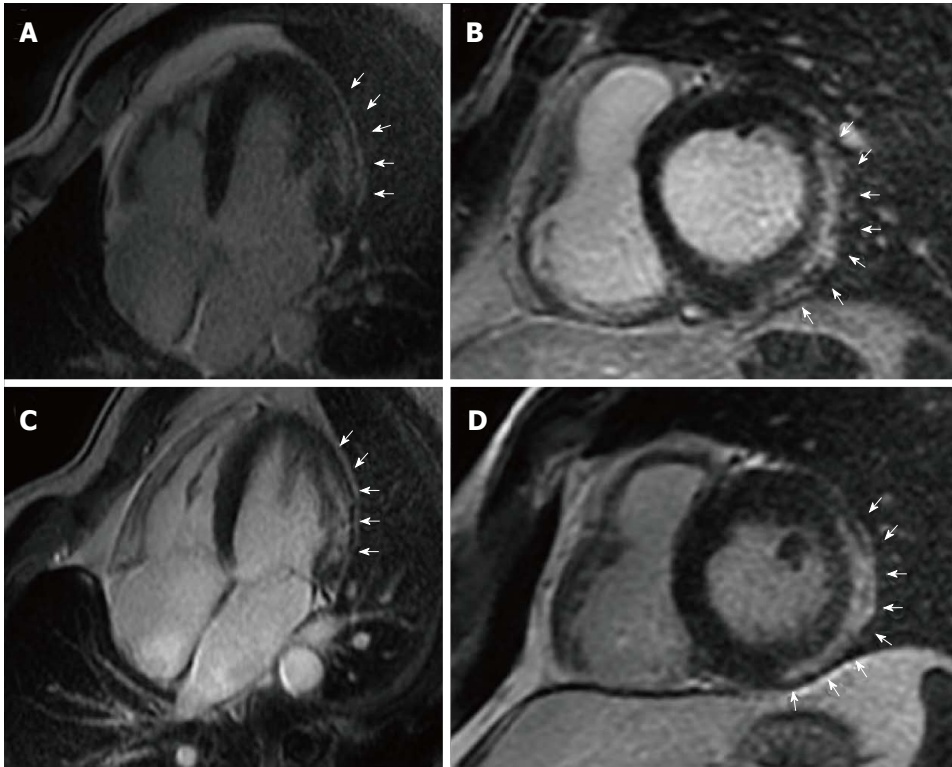
On the other side, and even more rare, left-dominant arrhythmogenic cardiomyopathy (LDAC) is characterized by epicardial or midmyocardial fibrotic or fibro-fatty replacement in postero-infero-lateral LV wall ("isolated

nonischemic scar") associated with life-threatening VA exceeding the degree of LV dysfunction (LVEF is often normal)<sup>[63-65]</sup>. LDAC is increasingly recognized as a cause of SCD in young athletes<sup>[66-68]</sup>. ECG often shows T-wave inversion in infero-lateral leads and low-voltage QRS complexes; VTs have right bundle branch block configuration and are often exercise-induced. In genetic familiar forms, usually autosomal-dominant, gene mutation mostly concerns components of cardiac desmosomes. In non-familiar forms LDAC phenotype can be the result of myocarditis leading to disruption of desmosomal architecture<sup>[63-65]</sup>. LGE-CMR plays a major diagnostic role because subepicardial/midmyocardial scar location is usually missed by echocardiography (Figure 4). Risk stratification is not well defined: By extrapolation from ARVC, ICD is indicated in patients who survived VF, with poorly tolerated sustained VT, or exercise-induced syncope. LGE-CMR also helps in risk stratification because a "stria" pattern in postero-lateral LV wall has been recently associated with a higher arrhythmic risk compared to the "benign" junctional "spotty" pattern, in a population of young athletes<sup>[68]</sup>.

### Some other pathological conditions at risk of SCD

Sarcoidosis is an idiopathic non-caseating granulomatous disease that affects several organs, mostly the lungs, but also the heart, skin, liver, spleen, eye, and lymph nodes. Sarcoidosis occurs worldwide, being more frequent in African-American and Northern Europeans, especially women. Disease prevalence ranges between 4.7 and 64 in 100000<sup>[69]</sup>. Cardiac involvement is clinically evident in approximately 5% of patients, in form of: (1) conduction abnormalities; (2) VA including unexpected SCD; and (3) heart failure with reduced LVEF. Moreover, about 25% of patients with systemic sarcoidosis have asymptomatic cardiac involvement. At CMR cardiac sarcoidosis can appear as LGE in a patchy pattern or in longitudinal striae in the midwall or subepicardium, usually located in basal septum or LV wall. Delayed enhancement represents focal scarring, while inflammation areas can be detected with T2-weighted and STIR sequences<sup>[70,71]</sup>. CMR is also useful for differential diagnosis with ARVC that sometimes can resemble cardiac sarcoidosis. A recent





**Figure 4 Left dominant arrhythmogenic cardiomyopathy.** Long-axis (A and C) and short-axis (B and D) postcontrast CMR views of two 34-year-old identical twin brothers showing a subepicardial/midmyocardial stria of LGE involving the lateral and inferolateral left ventricular wall (white arrows). CMR: Cardiac magnetic resonance; LGE: Late gadolinium enhancement.

consensus document<sup>[69]</sup> provided guidance for diagnosis and management of this disease, with a particular focus on arrhythmias. There are few data to help with SCD risk stratification<sup>[71]</sup>; in general, evidence from major randomized ICD trials of dilated cardiomyopathy is applicable, both in primary and secondary prevention. The presence of inflammation in both ventricles may increase ventricular arrhythmic risk; indeed, patients with implanted ICD have more frequent therapies from their devices, compared to other non-ischemic cardiomyopathies<sup>[69,70]</sup>. Current consensus recommendations<sup>[69]</sup> consider the use of CMR and the presence/absence of LGE (combined with electrophysiological study) to guide decision-making about ICD implant.

Amyloidosis is a disease characterized by protein misfold, aggregating into fibrils, and depositing extracellularly with disruption of organ architecture and function. There are two main types which affect the heart: Light chain (AL) amyloidosis and transthyretin cardiac amyloidosis (ATTR), both associated with the risk of VA and SCD<sup>[72,73]</sup>. Systemic amyloidosis occurs in more than 10 per million person-years in the United States population, with about 2000 new cases of AL amyloidosis occurring each year, approximately half of whom with significant cardiac involvement. The median age at presentation is 55–60 years, especially affecting women. The gold standard for diagnosis is endomyocardial biopsy, but CMR is increasingly used because it provides an accurate tissue characterization without the invasiveness of biopsy. At CMR the most frequent finding is a global

subendocardial and circumferential LGE that is specific for cardiac amyloidosis. CMR findings (in particular LGE) have also been associated with prognosis and arrhythmic risk stratification, with the potential for guiding decision about ICD implant<sup>[73]</sup>.

Left ventricular non-compaction (LVNC) is a relatively rare congenital disease, caused by an embryogenesis arrest, in which LV seems to be spongy. Ventricular wall anatomy is characterized by prominent LV trabeculae, a thin compacted layer, and deep intertrabecular recesses<sup>[74]</sup>. Clinical symptoms are related to neuromuscular disorders, heart failure with reduced LVEF, ventricular arrhythmic events and systemic thromboembolism. CMR can accurately identify this pathology, delineating hypertrabeculations of the apex and the LV lateral wall with subendocardial, midwall or transmural LGE<sup>[75]</sup>. CMR also helps to differentiate true LVNC from normal variants of increased trabeculations that can be found especially in young athletes. There are also recent data about the role of CMR for risk stratification. In a recent prospective multicenter study<sup>[75]</sup>, 113 patients underwent CMR, looking for diagnostic criterion of noncompacted/compacted ratio  $> 2.3$  in end-diastole and LGE assessment. At a mean follow-up of  $48 \pm 24$  mo the degree of LV trabeculation had no prognostic impact on the primary outcome (a composite of thromboembolic events, heart failure hospitalizations, VA and cardiac death) above LV dilation and dysfunction. LGE-CMR, instead, showed a significant correlation with life-threatening VA events and SCD.

Myocarditis is a group of heart-specific immune diseases

classified by clinical and histopathological manifestations. Myocarditis may resolve spontaneously, recur or become chronic, leading about 30%-40% of biopsy-proven cases to dilated cardiomyopathy (DCM), death or heart transplantation. In the 2013 ESC myocarditis Task Force report<sup>[76]</sup>, the disease was defined histologically as an inflammatory disease of the myocardium diagnosed on endomyocardial biopsy (EMB). Although EMB remains the diagnostic gold standard for diagnosis, it is not widely used. Traditionally, when the diagnosis is only based upon the histological Dallas criteria, myocarditis results to be a relatively rare disease. However, the use of highly sensitive immunohistochemical and molecular tools applied to EMB and of CMR suggests that there is a substantial clinical underestimation of its frequency and of its role in DCM<sup>[77,78]</sup>. CMR sequences have important diagnostic and prognostic value. T<sub>2</sub>-weighted CMR sequences detect edema or water, and T<sub>1</sub>-weighted sequences detect inflammation or fibrosis. LGE imaging can help in distinguishing nonischemic patterns of myocyte damage and fibrosis from ischemic injury, and T<sub>2</sub>-weighted and early gadolinium enhancement imaging detect other inflammatory features of edema, capillary leakage and hyperemia<sup>[78,79]</sup>. LGE has been associated with a higher (3.7%/year) risk of a composite of cardiovascular adverse events and its extent also predicted a composite endpoint of cardiac death, heart failure hospitalization, VT, and sudden death<sup>[80]</sup>.

Anderson-Fabry disease is a X-linked disorder due to a deficiency of the alpha-galactosidase enzyme that causes an inability to catabolize glycosphingolipids, leading to their accumulation in several organs, including the heart<sup>[81]</sup>. The storage of lipids causes an increase of the ventricular wall thickness that simulates HCM and leads to heart failure<sup>[81,82]</sup>. Diagnosis can be made with CMR showing LGE within the basal infero-lateral wall but typically sparing the endocardium, related to myocardial collagen scarring that represents the substrate for re-entry mechanism and SCD. Patients who have significant fibrosis on MRI and those with nonsustained VT are at higher risk for arrhythmic complications and may be considered for ICD<sup>[82,83]</sup>.

## DECISION-MAKING IN CRT DEVICE IMPLANTATION

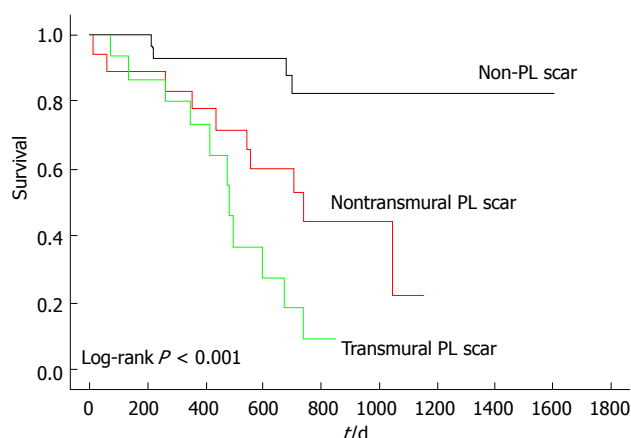
CRT is a well-established therapy in patients with heart failure with reduced LVEF (< 35%) and a wide QRS (> 120 ms), usually with left bundle branch block<sup>[84]</sup>. In this setting, compared to optimal medical therapy, CRT reduces all-cause mortality and heart failure hospitalization, both in ischemic and non-ischemic cardiomyopathy, with larger benefit in non-ischemic etiology<sup>[84,85]</sup>. However, about 30%-40% of patients implanted according to current guidelines<sup>[86]</sup> do not show any benefit from CRT or even get worse<sup>[87]</sup>. This is hardly acceptable considering costs and risk of the procedure. There are several reasons explaining suboptimal CRT response: (1) patient's characteristics (absence of ventricular dyssynchrony,

too advanced heart disease to get a benefit, severe right ventricular dysfunction, untreated arrhythmias, severe medical co-pathologies, etc.); (2) suboptimal LV lead position at implant; (3) suboptimal CRT device programming during subsequent course<sup>[87,88]</sup>.

The LV pacing site is an important determinant of a good outcome after CRT<sup>[88]</sup>. According to current guidelines, LV lead should be placed in non-apical posterolateral region to pace the latest activated areas<sup>[86]</sup>. Intuitively, deploying the LV lead over the latest electrical or (preferably) mechanical activated segments is likely to maximize the effects of CRT. However, recent evidence suggests that there is a large interindividual variability as concerns the latest activated areas and, subsequently, optimal LV pacing site<sup>[89-91]</sup>. Indeed, the latest mechanical activation is localized in posterolateral regions in 85%-90% of patients with non-ischemic dilated cardiomyopathy, but only in 10% of those with ischemic etiology<sup>[15]</sup>.

Moreover, scar in proximity of LV pacing stimulus interferes with resynchronization, leading to QRS fragmentation and prolongation, and this is true both in ischemic and non-ischemic etiologies<sup>[92,93]</sup>. Chalil<sup>[94]</sup> showed that pacing over scar was associated with a higher risk of cardiac mortality or heart failure hospitalizations compared with pacing viable myocardium (Figure 5). In a study of 559 patients undergoing CRT, Leyva<sup>[95]</sup> found that LV lead positions over scar was associated with poorer CRT response, higher risk of cardiovascular death, heart failure hospitalizations and SCD at follow-up.

In this context, a multimodality imaging approach<sup>[96-98]</sup> is emerging with a dedicated "CRT team"<sup>[99-102]</sup>, composed of electrophysiologists, cardiac imaging specialists and radiologists working together to identify the target areas (the most delayed and viable region) for LV pacing, by using CMR, myocardial perfusion imaging and newer echocardiographic techniques (such as longitudinal myocardial strain). Recent studies applying this method have demonstrated better clinical outcomes with the LV lead positioned at the latest mechanically activated region and away from myocardial scar<sup>[99-102]</sup>. In a study by Bertini *et al.*<sup>[102]</sup>, 100 patients with ischemic and non-ischemic dilated cardiomyopathy were enrolled: Group 1 with 50 consecutive patients scheduled for CRT and prospectively included, and group 2 (control) including 50 patients with a CRT device implanted according to standard clinical practice. In group 1, patients underwent two-dimensional speckle-tracking assessment of longitudinal myocardial strain and CMR imaging to identify the target area for LV lead. A positive response to CRT was defined as a  $\geq 15\%$  reduction of LV end-systolic volume at 6-mo follow-up. The result was that 78% of patients in group 1 were classified as responders to CRT compared to only 56% in group 2 ( $P = 0.019$ ). The "CRT team" identified as target for LV pacing the lateral area in 60% of patients, but notably, in 16% of patients, the target was far from the lateral area, in the anterior or posterior regions. The patients with concordant position showed the highest positive response (93.1%) to CRT. These encouraging results need further



**Figure 5** Left ventricular lead position, transmurality of scar, and outcome after cardiac resynchronization therapy. PL: Posterolateral.

validation in future larger multicenter trials with longer follow-up.

Placement of the LV lead is restricted by variable cardiac venous anatomy. Retrograde cardiac venography *via* the coronary sinus, at the time of implantation, is the gold-standard approach to imaging the coronary veins. It has been suggested that coronary vein imaging before CRT implantation could be useful and, in this respect, coronary venography is feasible with both CMR and computed tomography (CT)<sup>[15,96]</sup>. However, this approach has major limitations because it is technically challenging and can miss little veins that are beyond the spatial resolution of CMR and CT, but anyway these veins could be suitable for implantation. In addition, neither CMR nor CT provides adequate imaging of Thebesian and Vieussens valves or vein stenoses<sup>[15,96]</sup>.

## ARRHYTHMIC SUBSTRATE IDENTIFICATION AND ABLATION

Catheter ablation is a well-established therapy for patients with scar-related sustained monomorphic VT, usually seen after myocardial infarction, and for atrial fibrillation (AF), the most common cardiac arrhythmia. Anyway, these arrhythmias are the most complex and challenging for the electrophysiologist<sup>[103]</sup>.

For a successful ablation, the correct identification of underlying arrhythmogenic substrates is critical. With the use of standard electroanatomic mapping techniques, substrates are identified only indirectly, with local voltage amplitudes as a surrogate of the state of surrounding myocardium<sup>[103]</sup>. This approach, in addition to being time-consuming, lacks sensitivity for deep scar and lacks specificity when there is poor catheter contact or thinner myocardium<sup>[103]</sup>. Therefore, improved strategies to define arrhythmogenic scar substrates would be welcome. In this context, CMR could give an important contribution due to its ability to characterize cardiac anatomy and function without exposing the patient to additional radiation<sup>[7,41]</sup>. As validated histopathologically,

CMR can visualize fibrosis and scar by delayed imaging of gadolinium contrast agents that accumulate in the extracellular matrix and have slower washout from scar than from normal myocardium<sup>[7,8,14]</sup>. Thanks to newer mapping technologies, CMR images can be merged with electrograms acquired from the conventional electrophysiologic study, thus creating an anatomic roadmap to guide ablation procedure<sup>[103]</sup>.

Myocardial scar, the most common substrate for reentrant VA, can be easily displayed by LGE-CMR, allowing to shorten the procedure time devoted to substrate identification and enabling ablation of hemodynamically unstable VT (when conventional electrophysiologic and point-by-point voltage mapping is impossible)<sup>[104]</sup>. Moreover, a better understanding of the physiologic conduction characteristics associated with various anatomic scar substrates may improve patient selection for ablation, avoiding the procedure when scar burden is too high and complex, with few chances of success<sup>[105]</sup>.

In the setting of AF ablation, LGE-CMR could be useful for patient selection, guidance of ablation procedure and post-ablation follow-up. Importantly, atrial LGE-CMR may allow improved patient selection so that unnecessary procedures are avoided in cases with little chance of procedural success<sup>[106]</sup>. Extensive left atrial LGE (> 35%) has been associated with a high rate (96%) of AF recurrence after catheter ablation<sup>[107]</sup>. Moreover, when procedure is planned in patients with a high burden of LGE, a more extensive ablation strategy could be pursued in addition to isolation of the pulmonary veins<sup>[108]</sup>. During the follow-up period, CMR can be useful to assess ablation success, for example, in terms of complete/incomplete isolation of pulmonary veins.

The main limitations for such approach are the added costs and expertise required for adequate image acquisition and analyses, the need for dedicated software, as well as inadequate spatial resolution in the atria. Moreover, CMR can create potential problems in patients already implanted with a cardiac device (pacemaker, ICD and CRT). Even when the device is "MRI safe" and CMR is technically feasible, lead artifacts can significantly alter image integrity and its clinical utility.

Hopefully, with improving techniques, accurate pre-procedural identification of the arrhythmogenic substrate by CMR may become in the near future an important adjunct for patient selection, procedural planning and post-procedural evaluation.

## CONCLUSION

Cardiac MRI is revolutionizing the approach to the arrhythmologic patients both in diagnostic and therapeutic work-up. It provides information that other diagnostic imaging techniques do not allow to obtain, without radiation exposure, facilitating the initial evaluation and, once established a diagnosis, the choice of the most appropriate treatment. Current limitations are: (1) the paucity of randomized studies evaluating the outcome of



patients treated with a CMR-based approach; (2) CMR is time-consuming, expensive, and requires experienced personnel for image acquisition and analysis; and (3) CMR still has inadequate spatial resolution in the left atrium and right ventricle, limiting its routine use for most arrhythmias arising from these chambers.

Lastly, a mention has to be made to nephrogenic systemic fibrosis that is a devastating (albeit extremely rare) potential complication in patients exposed to gadolinium-based contrast agents. This complication occurs almost exclusively in patients with moderate to severe kidney disease, particularly those on dialysis with incidences, in this latter group, ranging from 2.5% to 5%<sup>[109]</sup>.

Based on the current literature and waiting for more data from future studies, it is foreseeable that CMR use in daily arrhythmologic practice will be increasingly implemented.

## REFERENCES

- 1 **Saeed M**, Van TA, Krug R, Hetts SW, Wilson MW. Cardiac MR imaging: current status and future direction. *Cardiovasc Diagn Ther* 2015; **5**: 290-310 [PMID: 26331113 DOI: 10.3978/j.issn.2223-3652.2015.06.07]
- 2 **Kumar A**, Bagur R. Cardiac magnetic resonance in clinical cardiology. *World J Cardiol* 2015; **7**: 6-9 [PMID: 25632313 DOI: 10.4330/wjc.v7.i1.6]
- 3 **Priori SG**, Blomström-Lundqvist C, Mazzanti A, Blom N, Borggrefe M, Camm J, Elliott PM, Fitzsimons D, Hatala R, Hindricks G, Kirchhof P, Kjeldsen S, Kuck KH, Hernandez-Madrid A, Nikolaou N, Norekvål TM, Spaulding C, Van Veldhuisen DJ. 2015 ESC Guidelines for the management of patients with ventricular arrhythmias and the prevention of sudden cardiac death: The Task Force for the Management of Patients with Ventricular Arrhythmias and the Prevention of Sudden Cardiac Death of the European Society of Cardiology (ESC) Endorsed by: Association for European Paediatric and Congenital Cardiology (AEPC). *Europace* 2015; **17**: 1601-1687 [PMID: 26318695 DOI: 10.1093/europace/euv319]
- 4 **Wellens HJ**, Schwartz PJ, Lindemans FW, Buxton AE, Goldberger JJ, Hohnloser SH, Huikuri HV, Kääb S, La Rovere MT, Malik M, Myerburg RJ, Simoons ML, Swedberg K, Tijssen J, Voors AA, Wilde AA. Risk stratification for sudden cardiac death: current status and challenges for the future. *Eur Heart J* 2014; **35**: 1642-1651 [PMID: 24801071 DOI: 10.1093/eurheartj/ehu176]
- 5 **Goldberger JJ**, Basu A, Boineau R, Buxton AE, Cain ME, Canty JM, Chen PS, Chugh SS, Costantini O, Exner DV, Kadish AH, Lee B, Lloyd-Jones D, Moss AJ, Myerburg RJ, Olgin JE, Passman R, Stevenson WG, Tomaselli GF, Zareba W, Zipes DP, Zoloth L. Risk stratification for sudden cardiac death: a plan for the future. *Circulation* 2014; **129**: 516-526 [PMID: 24470473 DOI: 10.1161/CIRCULATIONAHA.113.007149]
- 6 **Wu TJ**, Ong JJ, Hwang C, Lee JJ, Fishbein MC, Czer L, Trento A, Blanche C, Kass RM, Mandel WJ, Karagueuzian HS, Chen PS. Characteristics of wave fronts during ventricular fibrillation in human hearts with dilated cardiomyopathy: role of increased fibrosis in the generation of reentry. *J Am Coll Cardiol* 1998; **32**: 187-196 [PMID: 9669269]
- 7 **Ipek EG**, Nazarian S. Cardiac magnetic resonance for prediction of arrhythmogenic areas. *Trends Cardiovasc Med* 2015; **25**: 635-642 [PMID: 25937045 DOI: 10.1016/j.tcm.2015.02.012]
- 8 **Franco A**, Javidi S, Ruehm SG. Delayed Myocardial Enhancement in Cardiac Magnetic Resonance Imaging. *J Radiol Case Rep* 2015; **9**: 6-18 [PMID: 26622933 DOI: 10.3941/jrcr.v9i6.2328]
- 9 **Disertori M**, Gulizia MM, Casolo G, Delise P, Di Lenarda A, Di Tano G, Lunati M, Mestroni L, Salerno-Uriarte J, Tavazzi L. Improving the appropriateness of sudden arrhythmic death primary prevention by implantable cardioverter-defibrillator therapy in patients with low left ventricular ejection fraction. Point of view. *J Cardiovasc Med (Hagerstown)* 2016; **17**: 245-255 [PMID: 26895401 DOI: 10.2459/JCM.0000000000000368]
- 10 **De Maria E**, Diemberger I, Vassallo PL, Pastore M, Giannotti F, Ronconi C, Romandini A, Biffi M, Martignani C, Ziacchi M, Bonfatti F, Tumietto F, Viale P, Boriani G. Prevention of infections in cardiovascular implantable electronic devices beyond the antibiotic agent. *J Cardiovasc Med (Hagerstown)* 2014; **15**: 554-564 [PMID: 24838036]
- 11 **De Maria E**, Borghi A, Bonetti L, Fontana PL, Cappelli S. Externalized conductors and insulation failure in Biotronik defibrillator leads: History repeating or a false alarm? *World J Clin Cases* 2017; **5**: 27-34 [PMID: 28255544 DOI: 10.12998/wjcc.v5.i2.27]
- 12 **Gorgels AP**, Gijssels C, de Vreede-Swagemakers J, Lousberg A, Wellens HJ. Out-of-hospital cardiac arrest--the relevance of heart failure. The Maastricht Circulatory Arrest Registry. *Eur Heart J* 2003; **24**: 1204-1209 [PMID: 12831814]
- 13 **Wellens HJ**, Gorgels AP, de Munter H. Sudden death in the community. *J Cardiovasc Electrophysiol* 2003; **14**: S104-S107 [PMID: 12950530]
- 14 **Wong TC**, Piehler K, Meier CG, Testa SM, Klock AM, Aneizi AA, Shakespere J, Kellman P, Shroff SG, Schwartzman DS, Mulukutla SR, Simon MA, Schelbert EB. Association between extracellular matrix expansion quantified by cardiovascular magnetic resonance and short-term mortality. *Circulation* 2012; **126**: 1206-1216 [PMID: 22851543 DOI: 10.1161/CIRCULATIONAHA.111.089409]
- 15 **Leyva F**. The Role of Cardiovascular Magnetic Resonance in Cardiac Resynchronization Therapy. *Card Electrophysiol Clin* 2015; **7**: 619-633 [PMID: 26596807 DOI: 10.1016/j.ccep.2015.08.003]
- 16 **Schelbert EB**, Cao JJ, Sigurdsson S, Aspelund T, Kellman P, Aletras AH, Dyke CK, Thorgeirsson G, Eiriksdottir G, Launer LJ, Gudnason V, Harris TB, Arai AE. Prevalence and prognosis of unrecognized myocardial infarction determined by cardiac magnetic resonance in older adults. *JAMA* 2012; **308**: 890-896 [PMID: 22948699 DOI: 10.1001/2012.jama.11089]
- 17 **McCrohon JA**, Moon JC, Prasad SK, McKenna WJ, Lorenz CH, Coats AJ, Pennell DJ. Differentiation of heart failure related to dilated cardiomyopathy and coronary artery disease using gadolinium-enhanced cardiovascular magnetic resonance. *Circulation* 2003; **108**: 54-59 [PMID: 12821550]
- 18 **Klem I**, Weinsaft JW, Bahnson TD, Hegland D, Kim HW, Hayes B, Parker MA, Judd RM, Kim RJ. Assessment of myocardial scarring improves risk stratification in patients evaluated for cardiac defibrillator implantation. *J Am Coll Cardiol* 2012; **60**: 408-420 [PMID: 22835669 DOI: 10.1016/j.jacc.2012.02.070]
- 19 **Disertori M**, Quintarelli S, Mazzola S, Favalli V, Narula N, Arbustini E. The need to modify patient selection to improve the benefits of implantable cardioverter-defibrillator for primary prevention of sudden death in non-ischaemic dilated cardiomyopathy. *Europace* 2013; **15**: 1693-1701 [PMID: 23946316 DOI: 10.1093/europace/eut228]
- 20 **Merchant FM**, Zheng H, Bigger T, Steinman R, Ikeda T, Pedretti RF, Salerno-Uriarte JA, Klersy C, Chan PS, Bartone C, Hohnloser SH, Ruskin JN, Armoundas AA. A combined anatomic and electrophysiologic substrate based approach for sudden cardiac death risk stratification. *Am Heart J* 2013; **166**: 744-752 [PMID: 24093856 DOI: 10.1016/j.ahj.2013.06.023]
- 21 **Disertori M**, Masè M, Ravelli F. Myocardial fibrosis predicts ventricular tachyarrhythmias. *Trends Cardiovasc Med* 2017; **27**: 363-372 [PMID: 28262437 DOI: 10.1016/j.tcm.2017.01.011]
- 22 **Scott PA**, Rosengarten JA, Curzen NP, Morgan JM. Late gadolinium enhancement cardiac magnetic resonance imaging for the prediction of ventricular tachyarrhythmic events: a meta-analysis. *Eur J Heart Fail* 2013; **15**: 1019-1027 [PMID: 23558217 DOI: 10.1093/eurjhf/hft053]
- 23 **Assomull RG**, Prasad SK, Lyne J, Smith G, Burman ED, Khan M, Sheppard MN, Poole-Wilson PA, Pennell DJ. Cardiovascular magnetic resonance, fibrosis, and prognosis in dilated cardiomyopathy. *J Am Coll Cardiol* 2006; **48**: 1977-1985 [PMID: 17112987]
- 24 **Iles L**, Pfluger H, Lefkowitz L, Butler MJ, Kistler PM, Kaye DM, Taylor AJ. Myocardial fibrosis predicts appropriate device therapy

- in patients with implantable cardioverter-defibrillators for primary prevention of sudden cardiac death. *J Am Coll Cardiol* 2011; **57**: 821-828 [PMID: 21310318 DOI: 10.1016/j.jacc.2010.06.062]
- 25 **Kuruvilla S**, Adenaw N, Katwal AB, Lipinski MJ, Kramer CM, Salerno M. Late gadolinium enhancement on cardiac magnetic resonance predicts adverse cardiovascular outcomes in nonischemic cardiomyopathy: a systematic review and meta-analysis. *Circ Cardiovasc Imaging* 2014; **7**: 250-258 [PMID: 24363358 DOI: 10.1161/CIRCIMAGING.113.001144]
  - 26 **Gulati A**, Jabbour A, Ismail TF, Guha K, Khwaja J, Raza S, Morarji K, Brown TD, Ismail NA, Dweck MR, Di Pietro E, Roughton M, Wage R, Daryani Y, O'Hanlon R, Sheppard MN, Alpenderura F, Lyon AR, Cook SA, Cowie MR, Assomull RG, Pennell DJ, Prasad SK. Association of fibrosis with mortality and sudden cardiac death in patients with nonischemic dilated cardiomyopathy. *JAMA* 2013; **309**: 896-908 [PMID: 23462786 DOI: 10.1001/jama.2013.1363]
  - 27 **Neilan TG**, Coelho-Filho OR, Danik SB, Shah RV, Dodson JA, Verdini DJ, Tokuda M, Daly CA, Tedrow UB, Stevenson WG, Jerosch-Herold M, Ghoshhajra BB, Kwong RY. CMR quantification of myocardial scar provides additive prognostic information in nonischemic cardiomyopathy. *JACC Cardiovasc Imaging* 2013; **6**: 944-954 [PMID: 23932642 DOI: 10.1016/j.jcmg.2013.05.013]
  - 28 **Perazzolo Marra M**, De Lazzari M, Zorzi A, Migliore F, Zilio F, Calore C, Vettor G, Tona F, Tarantini G, Cacciavillani L, Corbetti F, Giorgi B, Miotto D, Thiene G, Basso C, Iliceto S, Corrado D. Impact of the presence and amount of myocardial fibrosis by cardiac magnetic resonance on arrhythmic outcome and sudden cardiac death in nonischemic dilated cardiomyopathy. *Heart Rhythm* 2014; **11**: 856-863 [PMID: 24440822 DOI: 10.1016/j.hrthm.2014.01.014]
  - 29 **Masci PG**, Doulaptsis C, Bertella E, Del Torto A, Symons R, Pontone G, Barison A, Droogne W, Andreini D, Lorenzoni V, Gripari P, Mushtaq S, Emdin M, Bogaert J, Lombardi M. Incremental prognostic value of myocardial fibrosis in patients with non-ischemic cardiomyopathy without congestive heart failure. *Circ Heart Fail* 2014; **7**: 448-456 [PMID: 24647118 DOI: 10.1161/CIRCHEARTFAILURE.113.000996]
  - 30 **Chimura M**, Kiuchi K, Okajima K, Shimane A, Sawada T, Onishi T, Yamada S, Taniguchi Y, Yasaka Y, Kawai H. Distribution of ventricular fibrosis associated with life threatening ventricular tachyarrhythmias in patients with nonischemic dilated cardiomyopathy. *J Cardiovasc Electrophysiol* 2015; **26**: 1239-1246 [PMID: 26223827 DOI: 10.1111/jce.12767]
  - 31 **Piers SR**, Everaerts K, van der Geest RJ, Hazebroek MR, Siebelink HM, Pison LA, Schalij MJ, Bekkers SC, Heymans S, Zeppenfeld K. Myocardial scar predicts monomorphic ventricular tachycardia but not polymorphic ventricular tachycardia or ventricular fibrillation in nonischemic dilated cardiomyopathy. *Heart Rhythm* 2015; **12**: 2106-2114 [PMID: 26004942 DOI: 10.1016/j.hrthm.2015.05.026]
  - 32 **Di Marco A**, Anguera I, Schmitt M, Klem I, Neilan TG, White JA, Sramko M, Masci PG, Barison A, McKenna P, Mordi I, Haugaa KH, Leyva F, Rodriguez Capitán J, Satoh H, Nabeta T, Dallaglio PD, Campbell NG, Sabaté X, Cequier A. Late Gadolinium Enhancement and the Risk for Ventricular Arrhythmias or Sudden Death in Dilated Cardiomyopathy: Systematic Review and Meta-Analysis. *JACC Heart Fail* 2017; **5**: 28-38 [PMID: 28017348 DOI: 10.1016/j.jchf.2016.09.017]
  - 33 **Arbustini E**, Disertori M, Narula J. Primary Prevention of Sudden Arrhythmic Death in Dilated Cardiomyopathy: Current Guidelines and Risk Stratification. *JACC Heart Fail* 2017; **5**: 39-43 [PMID: 28034375 DOI: 10.1016/j.jchf.2016.11.009]
  - 34 **Bello D**, Fieno DS, Kim RJ, Perelles FS, Passman R, Song G, Kadish AH, Goldberger JJ. Infarct morphology identifies patients with substrate for sustained ventricular tachycardia. *J Am Coll Cardiol* 2005; **45**: 1104-1108 [PMID: 15808771]
  - 35 **Roes SD**, Borleffs CJ, van der Geest RJ, Westenberg JJ, Marsan NA, Kaandorp TA, Reiber JH, Zeppenfeld K, Lamb HJ, de Roos A, Schalij MJ, Bax JJ. Infarct tissue heterogeneity assessed with contrast-enhanced MRI predicts spontaneous ventricular arrhythmia in patients with ischemic cardiomyopathy and implantable cardioverter-defibrillator. *Circ Cardiovasc Imaging* 2009; **2**: 183-190 [PMID: 19808591 DOI: 10.1161/CIRCIMAGING.108.826529]
  - 36 **Scott PA**, Morgan JM, Carroll N, Murday DC, Roberts PR, Peebles CR, Harden SP, Curzen NP. The extent of left ventricular scar quantified by late gadolinium enhancement MRI is associated with spontaneous ventricular arrhythmias in patients with coronary artery disease and implantable cardioverter-defibrillators. *Circ Arrhythm Electrophysiol* 2011; **4**: 324-330 [PMID: 21493964 DOI: 10.1161/CIRCEP.110.959544]
  - 37 **Alexandre J**, Saloux E, Dugué AE, Lebon A, Lemaitre A, Roule V, Labombarda F, Provost N, Gomes S, Scanu P, Milliez P. Scar extent evaluated by late gadolinium enhancement CMR: a powerful predictor of long term appropriate ICD therapy in patients with coronary artery disease. *J Cardiovasc Magn Reson* 2013; **15**: 12 [PMID: 23331500 DOI: 10.1186/1532-429X-15-12]
  - 38 **Demirel F**, Adiyaman A, Timmer JR, Dambrink JH, Kok M, Boeve WJ, Elvan A. Myocardial scar characteristics based on cardiac magnetic resonance imaging is associated with ventricular tachyarrhythmia in patients with ischemic cardiomyopathy. *Int J Cardiol* 2014; **177**: 392-399 [PMID: 25440471 DOI: 10.1016/j.ijcard.2014.08.132]
  - 39 **Zeidan-Shwiri T**, Yang Y, Lashevsky I, Kadmon E, Kagal D, Dick A, Laish Farkash A, Paul G, Gao D, Shurrah M, Newman D, Wright G, Crystal E. Magnetic resonance estimates of the extent and heterogeneity of scar tissue in ICD patients with ischemic cardiomyopathy predict ventricular arrhythmia. *Heart Rhythm* 2015; **12**: 802-808 [PMID: 25583153 DOI: 10.1016/j.hrthm.2015.01.007]
  - 40 **Kadish AH**, Bello D, Finn JP, Bonow RO, Schaechter A, Subacius H, Albert C, Daubert JP, Fonseca CG, Goldberger JJ. Rationale and design for the Defibrillators to Reduce Risk by Magnetic Resonance Imaging Evaluation (DETERMINE) trial. *J Cardiovasc Electrophysiol* 2009; **20**: 982-987 [PMID: 19493153 DOI: 10.1111/j.1540-8167.2009.01503.x]
  - 41 **Bucciarelli-Ducci C**, Baritussi A, Auricchio A. Cardiac MRI Anatomy and Function as a Substrate for Arrhythmias. *Europace* 2016; **18**: iv130-iv135 [PMID: 28011840 DOI: 10.1093/europace/euw357]
  - 42 **Maron BJ**, Ommen SR, Semsarian C, Spirito P, Olivetto I, Maron MS. Hypertrophic cardiomyopathy: present and future, with translation into contemporary cardiovascular medicine. *J Am Coll Cardiol* 2014; **64**: 83-99 [PMID: 24998133 DOI: 10.1016/j.jacc.2014.05.003]
  - 43 **Maron BJ**, Maron MS. Contemporary strategies for risk stratification and prevention of sudden death with the implantable defibrillator in hypertrophic cardiomyopathy. *Heart Rhythm* 2016; **13**: 1155-1165 [PMID: 26749314 DOI: 10.1016/j.hrthm.2015.12.048]
  - 44 **Maron BJ**. Historical perspectives on the implantable cardioverter-defibrillator and prevention of sudden death in hypertrophic cardiomyopathy. *Card Electrophysiol Clin* 2015; **7**: 165-171 [PMID: 26002383 DOI: 10.1016/j.ccep.2015.03.001]
  - 45 **Rowin EJ**, Maron MS. The Role of Cardiac MRI in the Diagnosis and Risk Stratification of Hypertrophic Cardiomyopathy. *Arrhythm Electrophysiol Rev* 2016; **5**: 197-202 [PMID: 28116085 DOI: 10.15420/aer.2016.13.3]
  - 46 **Kamal MU**, Riaz IB, Janardhanan R. Cardiovascular magnetic resonance imaging in hypertrophic cardiomyopathy: Current state of the art. *Cardiol J* 2016; **23**: 250-263 [PMID: 27064795 DOI: 10.5603/CJ.a2016.0019]
  - 47 **Maron MS**. The role of cardiovascular magnetic resonance in sudden death risk stratification in hypertrophic cardiomyopathy. *Card Electrophysiol Clin* 2015; **7**: 187-193 [PMID: 26002385 DOI: 10.1016/j.ccep.2015.03.003]
  - 48 **Maron MS**, Maron BJ. Clinical Impact of Contemporary Cardiovascular Magnetic Resonance Imaging in Hypertrophic Cardiomyopathy. *Circulation* 2015; **132**: 292-298 [PMID: 26216086 DOI: 10.1161/CIRCULATIONAHA.114.014283]
  - 49 **Weng Z**, Yao J, Chan RH, He J, Yang X, Zhou Y, He Y. Prognostic Value of LGE-CMR in HCM: A Meta-Analysis. *JACC Cardiovasc Imaging* 2016; **9**: 1392-1402 [PMID: 27450876 DOI: 10.1016/j.jcmg.2016.02.031]
  - 50 **Chan RH**, Maron BJ, Olivetto I, Pencina MJ, Assenza GE, Haas T, Lesser JR, Gruner C, Crean AM, Rakowski H, Udelson JE, Rowin E, Lombardi M, Cecchi F, Tomberli B, Spirito P, Formisano F, Biagini



- E, Rapezzi C, De Cecco CN, Autore C, Cook EF, Hong SN, Gibson CM, Manning WJ, Appelbaum E, Maron MS. Prognostic value of quantitative contrast-enhanced cardiovascular magnetic resonance for the evaluation of sudden death risk in patients with hypertrophic cardiomyopathy. *Circulation* 2014; **130**: 484-495 [PMID: 25092278 DOI: 10.1161/CIRCULATIONAHA.113.007094]
- 51 **Gersh BJ**, Maron BJ, Bonow RO, Dearani JA, Fifer MA, Link MS, Naidu SS, Nishimura RA, Ommen SR, Rakowski H, Seidman CE, Towbin JA, Udelson JE, Yancy CW. 2011 ACCF/AHA guideline for the diagnosis and treatment of hypertrophic cardiomyopathy: executive summary: a report of the American College of Cardiology Foundation/American Heart Association Task Force on Practice Guidelines. *Circulation* 2011; **124**: 2761-2796 [PMID: 22068435 DOI: 10.1161/CIR.0b013e318223e230]
- 52 **Rowin EJ**, Maron BJ, Haas TS, Garberich RF, Wang W, Link MS, Maron MS. Hypertrophic Cardiomyopathy With Left Ventricular Apical Aneurysm: Implications for Risk Stratification and Management. *J Am Coll Cardiol* 2017; **69**: 761-773 [PMID: 28209216 DOI: 10.1016/j.jacc.2016.11.063]
- 53 **Elliott PM**, Anastasakis A, Borger MA, Borggrefe M, Cecchi F, Charron P, Hagege AA, Lafont A, Limongelli G, Mahrholdt H, McKenna WJ, Mogensen J, Nihoyannopoulos P, Nistri S, Pieper PG, Pieske B, Rapezzi C, Rutten FH, Tillmanns C, Watkins H. 2014 ESC Guidelines on diagnosis and management of hypertrophic cardiomyopathy: the Task Force for the Diagnosis and Management of Hypertrophic Cardiomyopathy of the European Society of Cardiology (ESC). *Eur Heart J* 2014; **35**: 2733-2779 [PMID: 25173338 DOI: 10.1093/eurheartj/ehu284]
- 54 **Pilichou K**, Thiene G, Bauce B, Rigato I, Lazzarini E, Migliore F, Perazzolo Marra M, Rizzo S, Zorzi A, Daliento L, Corrado D, Basso C. Arrhythmogenic cardiomyopathy. *Orphanet J Rare Dis* 2016; **11**: 33 [PMID: 27038780]
- 55 **Akdis D**, Brunckhorst C, Duru F, Saguner AM. Arrhythmogenic Cardiomyopathy: Electrical and Structural Phenotypes. *Arrhythm Electrophysiol Rev* 2016; **5**: 90-101 [PMID: 27617087 DOI: 10.15420/AER.2016.4.3]
- 56 **Corrado D**, Wichter T, Link MS, Hauer R, Marchlinski F, Anastasakis A, Bauce B, Basso C, Brunckhorst C, Tsatsopoulou A, Tandri H, Paul M, Schmied C, Pelliccia A, Duru F, Protonotarios N, Estes NA, McKenna WJ, Thiene G, Marcus FI, Calkins H. Treatment of arrhythmogenic right ventricular cardiomyopathy/dysplasia: an international task force consensus statement. *Eur Heart J* 2015; **36**: 3227-3237 [PMID: 26216920 DOI: 10.1093/eurheartj/ehv162]
- 57 **Corrado D**, Link MS, Calkins H. Arrhythmogenic Right Ventricular Cardiomyopathy. *N Engl J Med* 2017; **376**: 61-72 [PMID: 28052233 DOI: 10.1056/NEJMra1509267]
- 58 **Orgeron GM**, Calkins H. Advances in the Diagnosis and Management of Arrhythmogenic Right Ventricular Dysplasia/Cardiomyopathy. *Curr Cardiol Rep* 2016; **18**: 53 [PMID: 27108363]
- 59 **Haugaa KH**, Haland TF, Leren IS, Saberniak J, Edvardsen T. Arrhythmogenic right ventricular cardiomyopathy, clinical manifestations, and diagnosis. *Europace* 2016; **18**: 965-972 [PMID: 26498164 DOI: 10.1093/europace/euv340]
- 60 **Zorzi A**, Rigato I, Bauce B, Pilichou K, Basso C, Thiene G, Iliceto S, Corrado D. Arrhythmogenic Right Ventricular Cardiomyopathy: Risk Stratification and Indications for Defibrillator Therapy. *Curr Cardiol Rep* 2016; **18**: 57 [PMID: 27147509 DOI: 10.1007/s11886-016-0734-9]
- 61 **Brun F**, Groeneweg JA, Gear K, Sinagra G, van der Heijden J, Mestroni L, Hauer RN, Borgstrom M, Marcus FI, Hughes T. Risk Stratification in Arrhythmic Right Ventricular Cardiomyopathy Without Implantable Cardioverter-Defibrillators. *JACC Clin Electrophysiol* 2016; **2**: 558-564 [PMID: 27790640]
- 62 **te Riele AS**, Marcus FI, James CA, Murray BA, Tichnell C, Zimmerman SL, Kamel IR, Crosson J, Cramer MJ, Velthuis BK, Hauer RN, Tandri H, Bluemke DA, Calkins H. The Value of Cardiac Magnetic Resonance Imaging in Evaluation of Pediatric Patients for Arrhythmogenic Right Ventricular Dysplasia/Cardiomyopathy. *J Am Coll Cardiol* 2015; **66**: 873-874 [PMID: 26271073 DOI: 10.1016/j.jacc.2015.04.082]
- 63 **De Pasquale CG**, Heddle WF. Left sided arrhythmogenic ventricular dysplasia in siblings. *Heart* 2001; **86**: 128-130 [PMID: 11454821]
- 64 **Sen-Chowdhry S**, Syrris P, Prasad SK, Hughes SE, Merrifield R, Ward D, Pennell DJ, McKenna WJ. Left-dominant arrhythmogenic cardiomyopathy: an under-recognized clinical entity. *J Am Coll Cardiol* 2008; **52**: 2175-2187 [PMID: 19095136 DOI: 10.1016/j.jacc.2008.09.019]
- 65 **di Gioia CR**, Giordano C, Cerbelli B, Pisano A, Perli E, De Dominicis E, Poscolieri B, Palmieri V, Ciallella C, Zeppilli P, d'Amati G. Nonischemic left ventricular scar and cardiac sudden death in the young. *Hum Pathol* 2016; **58**: 78-89 [PMID: 27569295 DOI: 10.1016/j.humpath.2016.08.004]
- 66 **Busardò FP**, Cappato R, D'Ovidio C, Frati P, Riezzo I, Fineschi V. Fatal left-dominant arrhythmogenic cardiomyopathy involving a 25-year old professional football player: could it have been prevented? *Int J Cardiol* 2014; **174**: 423-425 [PMID: 24768383 DOI: 10.1016/j.ijcard.2014.04.035]
- 67 **d'Amati G**, De Caterina R, Basso C. Sudden cardiac death in an Italian competitive athlete: Pre-participation screening and cardiovascular emergency care are both essential. *Int J Cardiol* 2016; **206**: 84-86 [PMID: 26780682 DOI: 10.1016/j.ijcard.2016.01.011]
- 68 **Zorzi A**, Perazzolo Marra M, Rigato I, De Lazzari M, Susana A, Niero A, Pilichou K, Migliore F, Rizzo S, Giorgi B, De Conti G, Sarto P, Serratos L, Patrizi G, De Maria E, Pelliccia A, Basso C, Schiavon M, Bauce B, Iliceto S, Thiene G, Corrado D. Nonischemic Left Ventricular Scar as a Substrate of Life-Threatening Ventricular Arrhythmias and Sudden Cardiac Death in Competitive Athletes. *Circ Arrhythm Electrophysiol* 2016; **9**: pii: e004229 [PMID: 27390211 DOI: 10.1161/CIRCEP.116.004229]
- 69 **Birnie DH**, Sauer WH, Judson MA. Consensus statement on the diagnosis and management of arrhythmias associated with cardiac sarcoidosis. *Heart* 2016; **102**: 411-414 [PMID: 26743924 DOI: 10.1136/heartjnl-2015-308708]
- 70 **Greulich S**, Kitterer D, Latus J, Aguar E, Steubing H, Kaesemann P, Patrascu A, Greiser A, Groeninger S, Mayr A, Braun N, Alscher MD, Sechtem U, Mahrholdt H. Comprehensive Cardiovascular Magnetic Resonance Assessment in Patients With Sarcoidosis and Preserved Left Ventricular Ejection Fraction. *Circ Cardiovasc Imaging* 2016; **9**: pii: e005022 [PMID: 27903537]
- 71 **Ekström K**, Lehtonen J, Hänninen H, Kandolin R, Kivistö S, Kupari M. Magnetic Resonance Imaging as a Predictor of Survival Free of Life-Threatening Arrhythmias and Transplantation in Cardiac Sarcoidosis. *J Am Heart Assoc* 2016; **5**: pii: e003040 [PMID: 27139734 DOI: 10.1161/JAHA.115.003040]
- 72 **White JA**, Fine NM. Recent Advances in Cardiovascular Imaging Relevant to the Management of Patients with Suspected Cardiac Amyloidosis. *Curr Cardiol Rep* 2016; **18**: 77 [PMID: 27319007 DOI: 10.1007/s11886-016-0752-7]
- 73 **Fontana M**, Pica S, Reant P, Abdel-Gadir A, Treibel TA, Banyersad SM, Maestrini V, Barcella W, Rosmini S, Bulluck H, Sayed RH, Patel K, Mamhood S, Bucciarelli-Ducci C, Whelan CJ, Herrey AS, Lachmann HJ, Wechalekar AD, Manisty CH, Schelbert EB, Kellman P, Gillmore JD, Hawkins PN, Moon JC. Prognostic Value of Late Gadolinium Enhancement Cardiovascular Magnetic Resonance in Cardiac Amyloidosis. *Circulation* 2015; **132**: 1570-1579 [PMID: 26362631 DOI: 10.1161/CIRCULATIONAHA.115.016567]
- 74 **Arbustini E**, Favalli V, Narula N, Serio A, Grasso M. Left Ventricular Noncompaction: A Distinct Genetic Cardiomyopathy? *J Am Coll Cardiol* 2016; **68**: 949-966 [PMID: 27561770 DOI: 10.1016/j.jacc.2016.05.096]
- 75 **Andreini D**, Pontone G, Bogaert J, Roghi A, Barison A, Schwitter J, Mushtaq S, Vovas G, Sormani P, Aquaro GD, Monney P, Segurini C, Guglielmo M, Conte E, Fusini L, Dello Russo A, Lombardi M, Gripari P, Baggiano A, Fiorentini C, Lombardi F, Bartorelli AL, Pepi M, Masci PG. Long-Term Prognostic Value of Cardiac Magnetic Resonance in Left Ventricle Noncompaction: A Prospective Multicenter Study. *J Am Coll Cardiol* 2016; **68**: 2166-2181 [PMID: 27855806 DOI: 10.1016/j.jacc.2016.08.053]
- 76 **Caforio AL**, Pankuweit S, Arbustini E, Basso C, Gimeno-Blanes J, Felix SB, Fu M, Heliö T, Heymans S, Jahns R, Klingel K, Linhart A,

- Maisch B, McKenna W, Mogensen J, Pinto YM, Ristic A, Schultheiss HP, Seggewiss H, Tavazzi L, Thiene G, Yilmaz A, Charron P, Elliott PM. Current state of knowledge on aetiology, diagnosis, management, and therapy of myocarditis: a position statement of the European Society of Cardiology Working Group on Myocardial and Pericardial Diseases. *Eur Heart J* 2013; **34**: 2636-2648 [PMID: 23824828 DOI: 10.1093/eurheartj/ehd210]
- 77 **Caforio AL**, Marcolongo R, Basso C, Iliceto S. Clinical presentation and diagnosis of myocarditis. *Heart* 2015; **101**: 1332-1344 [PMID: 26109587 DOI: 10.1136/heartjnl-2014-306363]
- 78 **Heymans S**, Eriksson U, Lehtonen J, Cooper LT. The Quest for New Approaches in Myocarditis and Inflammatory Cardiomyopathy. *J Am Coll Cardiol* 2016; **68**: 2348-2364 [PMID: 27884253 DOI: 10.1016/j.jacc.2016.09.937]
- 79 **Friedrich MG**, Sechtem U, Schulz-Menger J, Holmvang G, Alakija P, Cooper LT, White JA, Abdel-Aty H, Gutberlet M, Prasad S, Aletras A, Laissy JP, Paterson I, Filipchuk NG, Kumar A, Pauschinger M, Liu P. Cardiovascular magnetic resonance in myocarditis: A JACC White Paper. *J Am Coll Cardiol* 2009; **53**: 1475-1487 [PMID: 19389557 DOI: 10.1016/j.jacc.2009.02.007]
- 80 **Schumm J**, Greulich S, Wagner A, Grün S, Ong P, Bentz K, Klingel K, Kandolf R, Bruder O, Schneider S, Sechtem U, Mahrholdt H. Cardiovascular magnetic resonance risk stratification in patients with clinically suspected myocarditis. *J Cardiovasc Magn Reson* 2014; **16**: 14 [PMID: 24461053 DOI: 10.1186/1532-429X-16-14]
- 81 **Nagueh SF**. Anderson-Fabry disease and other lysosomal storage disorders. *Circulation* 2014; **130**: 1081-1090 [PMID: 25245844 DOI: 10.1161/CIRCULATIONAHA.114.009789]
- 82 **Acharya D**, Doppalapudi H, Tallaj JA. Arrhythmias in Fabry cardiomyopathy. *Card Electrophysiol Clin* 2015; **7**: 283-291 [PMID: 26002392 DOI: 10.1016/j.ccep.2015.03.014]
- 83 **Krämer J**, Niemann M, Störk S, Frantz S, Beer M, Ertl G, Wanner C, Weidemann F. Relation of burden of myocardial fibrosis to malignant ventricular arrhythmias and outcomes in Fabry disease. *Am J Cardiol* 2014; **114**: 895-900 [PMID: 25073565 DOI: 10.1016/j.amjcard.2014.06.019]
- 84 **Abraham WT**, Fisher WG, Smith AL, Delurgio DB, Leon AR, Loh E, Kocovic DZ, Packer M, Clavell AL, Hayes DL, Ellestad M, Trupp RJ, Underwood J, Pickering F, Truex C, McAtee P, Messenger J. Cardiac resynchronization in chronic heart failure. *N Engl J Med* 2002; **346**: 1845-1853 [PMID: 12063368]
- 85 **Moss AJ**, Hall WJ, Cannom DS, Klein H, Brown MW, Daubert JP, Estes NA, Foster E, Greenberg H, Higgins SL, Pfeffer MA, Solomon SD, Wilber D, Zareba W. Cardiac-resynchronization therapy for the prevention of heart-failure events. *N Engl J Med* 2009; **361**: 1329-1338 [PMID: 19723701 DOI: 10.1056/NEJMoa0906431]
- 86 **Brignole M**, Auricchio A, Baron-Esquivias G, Bordachar P, Boriani G, Breithardt OA, Cleland J, Deharo JC, Delgado V, Elliott PM, Gorenek B, Israel CW, Leclercq C, Linde C, Mont L, Padeletti L, Sutton R, Vardas PE, Zamorano JL, Achenbach S, Baumgartner H, Bax JJ, Bueno H, Dean V, Deaton C, Erol C, Fagard R, Ferrari R, Hasdai D, Hoes AW, Kirchhof P, Knuuti J, Kolh P, Lancellotti P, Linhart A, Nihoyannopoulos P, Piepoli MF, Ponikowski P, Sirtes PA, Tamargo JL, Tendera M, Torbicki A, Wijns W, Windecker S, Kirchhof P, Blomstrom-Lundqvist C, Badano LP, Aliyev F, Bönsch D, Baumgartner H, Bsata W, Buser P, Charron P, Daubert JC, Dobreanu D, Faerstrand S, Hasdai D, Hoes AW, Le Heuzey JY, Mavrakis H, McDonagh T, Merino JL, Nawar MM, Nielsen JC, Pieske B, Poposka L, Ruschitzka F, Tendera M, Van Gelder IC, Wilson CM. 2013 ESC Guidelines on cardiac pacing and cardiac resynchronization therapy: the Task Force on cardiac pacing and resynchronization therapy of the European Society of Cardiology (ESC). Developed in collaboration with the European Heart Rhythm Association (EHRA). *Eur Heart J* 2013; **34**: 2281-2329 [PMID: 23801822 DOI: 10.1093/eurheartj/ehd150]
- 87 **Mullens W**, Grimm RA, Verga T, Dresing T, Starling RC, Wilkoff BL, Tang WH. Insights from a cardiac resynchronization optimization clinic as part of a heart failure disease management program. *J Am Coll Cardiol* 2009; **53**: 765-773 [PMID: 19245967 DOI: 10.106/j.jacc.2008.11.024]
- 88 **Ypenburg C**, van Bommel RJ, Delgado V, Mollema SA, Bleeker GB, Boersma E, Schalij MJ, Bax JJ. Optimal left ventricular lead position predicts reverse remodeling and survival after cardiac resynchronization therapy. *J Am Coll Cardiol* 2008; **52**: 1402-1409 [PMID: 18940531 DOI: 10.1016/j.jacc.2008.06.046]
- 89 **Derval N**, Steendijk P, Gula LJ, Deplagne A, Laborderie J, Sacher F, Knecht S, Wright M, Nault I, Ploux S, Ritter P, Bordachar P, Lafitte S, Réant P, Klein GJ, Narayan SM, Garrigue S, Hocini M, Haissaguerre M, Clementy J, Jais P. Optimizing hemodynamics in heart failure patients by systematic screening of left ventricular pacing sites: the lateral left ventricular wall and the coronary sinus are rarely the best sites. *J Am Coll Cardiol* 2010; **55**: 566-575 [PMID: 19931364 DOI: 10.1016/j.jacc.2009.08.045]
- 90 **Delgado V**, van Bommel RJ, Bertini M, Borleffs CJ, Marsan NA, Arnold CT, Nucifora G, van de Veire NR, Ypenburg C, Boersma E, Holman ER, Schalij MJ, Bax JJ. Relative merits of left ventricular dyssynchrony, left ventricular lead position, and myocardial scar to predict long-term survival of ischemic heart failure patients undergoing cardiac resynchronization therapy. *Circulation* 2011; **123**: 70-78 [PMID: 21173353 DOI: 10.1161/CIRCULATIONAHA.110.945345]
- 91 **Shanks M**, Delgado V, Bax JJ. Cardiac Resynchronization Therapy in Non-Ischemic Cardiomyopathy. *J Atr Fibrillation* 2016; **8**: 1362 [PMID: 27909478 DOI: 10.4022/jafib.1362]
- 92 **Ypenburg C**, Schalij MJ, Bleeker GB, Steendijk P, Boersma E, Dibbets-Schneider P, Stokkel MP, van der Wall EE, Bax JJ. Impact of viability and scar tissue on response to cardiac resynchronization therapy in ischaemic heart failure patients. *Eur Heart J* 2007; **28**: 33-41 [PMID: 17121757]
- 93 **Leyva F**, Foley PW, Chalil S, Ratib K, Smith RE, Prinzen F, Auricchio A. Cardiac resynchronization therapy guided by late gadolinium-enhancement cardiovascular magnetic resonance. *J Cardiovasc Magn Reson* 2011; **13**: 29 [PMID: 21668964 DOI: 10.1186/1532-492X-13-29]
- 94 **Chalil S**, Stegemann B, Muhyaldeen SA, Khadjooi K, Foley PW, Smith RE, Leyva F. Effect of posterolateral left ventricular scar on mortality and morbidity following cardiac resynchronization therapy. *Pacing Clin Electrophysiol* 2007; **30**: 1201-1209 [PMID: 17897122]
- 95 **Leyva F**, Taylor RJ, Foley PW, Umar F, Mulligan LJ, Patel K, Stegemann B, Haddad T, Smith RE, Prasad SK. Left ventricular midwall fibrosis as a predictor of mortality and morbidity after cardiac resynchronization therapy in patients with nonischemic cardiomyopathy. *J Am Coll Cardiol* 2012; **60**: 1659-1667 [PMID: 23021326 DOI: 10.1016/j.jacc.2012.05.054]
- 96 **Leyva F**. The Role of Cardiovascular Magnetic Resonance in Cardiac Resynchronization Therapy. *Heart Fail Clin* 2017; **13**: 63-77 [PMID: 27886933 DOI: 10.1016/j.hfc.2016.07.006]
- 97 **Nguyen UC**, Mafi-Rad M, Aben JP, Smulders MW, Engels EB, van Stipdonk AM, Luermans JG, Bekkers SC, Prinzen FW, Vernooy K. A novel approach for left ventricular lead placement in cardiac resynchronization therapy: Intraprocedural integration of coronary venous electroanatomic mapping with delayed enhancement cardiac magnetic resonance imaging. *Heart Rhythm* 2017; **14**: 110-119 [PMID: 27663606 DOI: 10.1016/j.hrthm.2016.09.015]
- 98 **Carità P**, Corrado E, Pontone G, Curnis A, Bontempi L, Novo G, Guglielmo M, Ciaramitaro G, Assennato P, Novo S, Coppola G. Non-responders to cardiac resynchronization therapy: Insights from multimodality imaging and electrocardiography. A brief review. *Int J Cardiol* 2016; **225**: 402-407 [PMID: 27776243 DOI: 10.1016/j.ijcard.2016.09.037]
- 99 **Saba S**, Marek J, Schwartzman D, Jain S, Adelstein E, White P, Oyenuga OA, Onishi T, Soman P, Gorcsan J. Echocardiography-guided left ventricular lead placement for cardiac resynchronization therapy: results of the Speckle Tracking Assisted Resynchronization Therapy for Electrode Region trial. *Circ Heart Fail* 2013; **6**: 427-434 [PMID: 23476053 DOI: 10.1161/CIRCHEARTFAILURE.112.000078]
- 100 **Khan FZ**, Virdee MS, Palmer CR, Pugh PJ, O'Halloran D, Elisk M, Read PA, Begley D, Fynn SP, Dutka DP. Targeted left ventricular lead placement to guide cardiac resynchronization therapy: the TARGET study: a randomized, controlled trial. *J Am Coll Cardiol* 2012; **59**: 1509-1518 [PMID: 22405632 DOI: 10.1016/j.jacc.2011.12.030]

- 101 **Sommer A**, Kronborg MB, Nørgaard BL, Poulsen SH, Bouchelouche K, Böttcher M, Jensen HK, Jensen JM, Kristensen J, Gerdes C, Mortensen PT, Nielsen JC. Multimodality imaging-guided left ventricular lead placement in cardiac resynchronization therapy: a randomized controlled trial. *Eur J Heart Fail* 2016; **18**: 1365-1374 [PMID: 27087019 DOI: 10.1002/ehf.530]
- 102 **Bertini M**, Mele D, Malagù M, Fiorencis A, Toselli T, Casadei F, Cannizzaro T, Fragale C, Fucili A, Campagnolo E, Benea G, Ferrari R. Cardiac resynchronization therapy guided by multimodality cardiac imaging. *Eur J Heart Fail* 2016; **18**: 1375-1382 [PMID: 27406979 DOI: 10.1002/ehf.605]
- 103 **Romero J**, Natale A, Di Biase L. Cardiac magnetic resonance imaging and electrophysiology “the beauty is in the eye of the beholder”. *Trends Cardiovasc Med* 2015; **25**: 643-645 [PMID: 25979137 DOI: 10.1016/j.tcm.2015.04.006]
- 104 **Estner HL**, Zviman MM, Herzka D, Miller F, Castro V, Nazarian S, Ashikaga H, Dori Y, Berger RD, Calkins H, Lardo AC, Halperin HR. The critical isthmus sites of ischemic ventricular tachycardia are in zones of tissue heterogeneity, visualized by magnetic resonance imaging. *Heart Rhythm* 2011; **8**: 1942-1949 [PMID: 21798226 DOI: 10.1016/j.hrthm.2011.07.027]
- 105 **Desjardins B**, Crawford T, Good E, Oral H, Chugh A, Pelosi F, Morady F, Bogun F. Infarct architecture and characteristics on delayed enhanced magnetic resonance imaging and electroanatomic mapping in patients with postinfarction ventricular arrhythmia. *Heart Rhythm* 2009; **6**: 644-651 [PMID: 19389653 DOI: 10.1016/j.hrthm.2009.02.018]
- 106 **Peters DC**, Wylie JV, Hauser TH, Kissinger KV, Botnar RM, Essebag V, Josephson ME, Manning WJ. Detection of pulmonary vein and left atrial scar after catheter ablation with three-dimensional navigator-gated delayed enhancement MR imaging: initial experience. *Radiology* 2007; **243**: 690-695 [PMID: 17517928]
- 107 **Spragg DD**, Khurram I, Zimmerman SL, Yarmohammadi H, Barcelon B, Needleman M, Edwards D, Marine JE, Calkins H, Nazarian S. Initial experience with magnetic resonance imaging of atrial scar and co-registration with electroanatomic voltage mapping during atrial fibrillation: success and limitations. *Heart Rhythm* 2012; **9**: 2003-2009 [PMID: 23000671 DOI: 10.1016/j.hrthm.2012.08.039]
- 108 **McGann C**, Akoum N, Patel A, Kholmovski E, Revelo P, Damal K, Wilson B, Cates J, Harrison A, Ranjan R, Burgon NS, Greene T, Kim D, Dibella EV, Parker D, Macleod RS, Marrouche NF. Atrial fibrillation ablation outcome is predicted by left atrial remodeling on MRI. *Circ Arrhythm Electrophysiol* 2014; **7**: 23-30 [PMID: 24363354 DOI: 10.1161/CIRCEP.113.000689]
- 109 **Kribben A**, Witzke O, Hillen U, Barkhausen J, Daul AE, Erbel R. Nephrogenic systemic fibrosis: pathogenesis, diagnosis, and therapy. *J Am Coll Cardiol* 2009; **53**: 1621-1628 [PMID: 19406336 DOI: 10.1016/j.jacc.2008.12.061]

**P- Reviewer:** Cheng TH, Lai S **S- Editor:** Ji FF  
**L- Editor:** Wang TQ **E- Editor:** Lu YJ



Retrospective Study

# Clinical outcomes of tricuspid valve repair accompanying left-sided heart disease

Kasra Azarnoush, Ahmad S Nadeemy, Bruno Pereira, Massoud A Leesar, Céline Lambert, Alaa Azhari, Vedat Eljezi, Nicolas Dauphin, Etienne Geoffroy, Lionel Camilleri

Kasra Azarnoush, INRA, UMR 1019 Nutrition Humaine, 63122 Saint Genès Champanelle, France

Kasra Azarnoush, Alaa Azhari, Vedat Eljezi, Nicolas Dauphin, Etienne Geoffroy, Lionel Camilleri, Department of Cardiac Surgery, CHU Gabriel Montpied, 63003 Clermont-Ferrand, France

Ahmad S Nadeemy, Kabul Medical University Heart Disease Institute, Kabul, Afghanistan

Bruno Pereira, Céline Lambert, Biostatistics Unit, CHU Gabriel Montpied, 63003 Clermont-Ferrand, France

Massoud A Leesar, Interventional Cardiology, University of Alabama, Birmingham, AL 35233, United States

**Author contributions:** Azarnoush K and Nadeemy AS designed and performed the research and wrote the paper; Pereira B and Lambert C did the statistic and data evaluation; Dauphin N and Geoffroy E performed all echocardiography concerning study patients; Leesar MA, Azhari A, Eljezi V and Camilleri L supervised the report and the manuscript and gave the final approval.

**Institutional review board statement:** The study was reviewed and approved by the Clermont-Ferrand University Hospital research unit, the “Délégation à la Recherche Clinique et à l’Innovation (DRCI)” and all statistical analyses were overseen by an independent Biostatistics unit.

**Informed consent statement:** All involved persons (subjects or legally authorized representative) gave their informed consent (written or verbal, as appropriate) prior to study inclusion.

**Conflict-of-interest statement:** All authors declare having no conflicts of interest.

**Data sharing statement:** The statistical methods and original anonymous dataset are available on request from the corresponding author at [kazarnoush@chu-clermontferrand.fr](mailto:kazarnoush@chu-clermontferrand.fr).

**Open-Access:** This article is an open-access article which was selected by an in-house editor and fully peer-reviewed by external reviewers. It is distributed in accordance with the Creative Commons Attribution Non Commercial (CC BY-NC 4.0) license,

which permits others to distribute, remix, adapt, build upon this work non-commercially, and license their derivative works on different terms, provided the original work is properly cited and the use is non-commercial. See: <http://creativecommons.org/licenses/by-nc/4.0/>

**Manuscript source:** Invited manuscript

**Correspondence to:** Kasra Azarnoush, MD, PhD, Department of Cardiac Surgery, CHU Gabriel Montpied, 58 Rue Montalembert, BP 69, 63003 Clermont-Ferrand, France. [kazarnoush@chu-clermontferrand.fr](mailto:kazarnoush@chu-clermontferrand.fr)  
Telephone: +33-47-3751577  
Fax: +33-47-3751579

**Received:** October 27, 2016

**Peer-review started:** October 31, 2016

**First decision:** January 14, 2017

**Revised:** May 12, 2017

**Accepted:** May 22, 2017

**Article in press:** May 23, 2017

**Published online:** October 26, 2017

## Abstract

### AIM

To determine whether the need for additional tricuspid valve repair is an independent risk factor when surgery is required for a left-sided heart disease.

### METHODS

One hundred and eighty patients ( $68 \pm 12$  years, 79 males) underwent tricuspid annuoplasty. Cox proportional-hazards regression model for multivariate analysis was performed for variables found significant in univariate analyses.

### RESULTS

Tricuspid regurgitation etiology was functional in 154 cases (86%), organic in 16 cases (9%), and mixed in



10 cases (6%), respectively. Postoperative mortality at 30 days was 11.7%. Mean follow-up was 51.7 mo with survival at 5 years of 73.5%. Risk factors for mortality were acute endocarditis [hazard ratio (HR) = 9.22 (95%CI: 2.87-29.62),  $P < 0.001$ ], ischemic heart disease requiring myocardial revascularization [HR = 2.79 (1.26-6.20),  $P = 0.012$ ], and aortic valve stenosis [HR = 2.6 (1.15-5.85),  $P = 0.021$ ]. Significant predictive factors from univariate analyses were double-valve replacement combined with tricuspid annuloplasty [HR = 2.21 (1.11-4.39),  $P = 0.003$ ] and preoperatively impaired ejection fraction [HR = 1.98 (1.04-3.92),  $P = 0.044$ ]. However, successful mitral valve repair showed a protective effect [HR = 0.32 (0.10-0.98),  $P = 0.046$ ]. Additionally, in instances where tricuspid regurgitation required the need for concomitant tricuspid valve repair, mortality predictor scores such as Euroscore 2 could be shortened to a simple Euroscore-tricuspid comprised of only 7 inputs. The explanation may lie in the fact that significant tricuspid regurgitation following left-sided heart disease represents an independent risk factor encompassing several other factors such as pulmonary arterial hypertension and dyspnea.

## CONCLUSION

Tricuspid annuloplasty should be used more often as a concomitant procedure in the presence of relevant tricuspid regurgitation, although it usually reveals an overly delayed correction of a left-sided heart disease.

**Key words:** Tricuspid regurgitation; Patient outcome assessment; Valvular annuloplasty; Infective endocarditis; Mitral valve annuloplasty

© The Author(s) 2017. Published by Baishideng Publishing Group Inc. All rights reserved.

**Core tip:** Tricuspid valve repair with flexible ring is easy to achieve in patients undergoing heart surgery. Predictor scores such as Euroscore 2 could be shortened to a simple Euroscore-tricuspid of only 7 inputs. A significant tricuspid regurgitation following a left-sided heart disease is an independent risk factor that encompasses several other factors such as pulmonary arterial hypertension and dyspnea. Patients with functional damage of the right side of the heart and significant functional tricuspid regurgitation have poor mid-term results with high mortality. A concomitant tricuspid regurgitation usually reveals a delayed correction of a left-sided heart disease.

Azarnoush K, Nadeemy AS, Pereira B, Leesar MA, Lambert C, Azhari A, Eljezi V, Dauphin N, Geoffroy E, Camilleri L. Clinical outcomes of tricuspid valve repair accompanying left-sided heart disease. *World J Cardiol* 2017; 9(10): 787-793 Available from: URL: <http://www.wjgnet.com/1949-8462/full/v9/i10/787.htm> DOI: <http://dx.doi.org/10.4330/wjc.v9.i10.787>

## INTRODUCTION

The concomitant correction of functional tricuspid regur-

gitation secondary to left heart disease requiring surgery remains underused<sup>[1]</sup> despite recent data showing late development of severe tricuspid regurgitation in patients with mild regurgitation at the time of cardiac procedures (e.g., mitral valve surgery)<sup>[2]</sup>. Several factors including pulmonary arterial hypertension, right ventricular dilatation, increased tricuspid annulus diameter and the occurrence of right-sided heart failure promote persistent or even deteriorating functional tricuspid insufficiency<sup>[3,4]</sup>. Associated tricuspid regurgitation is present in almost 50% of patients undergoing mitral-valve surgery<sup>[5]</sup>. Most patients presenting with significant tricuspid regurgitation suffer from functional regurgitation due to dilatation of the tricuspid annulus, caused by dilatation of the right ventricle<sup>[6]</sup>.

Rare organic tricuspid insufficiencies may be secondary to iatrogenic injury (*i.e.*, pacing leads), or of rheumatic, infectious, congenital or carcinoid origin<sup>[7]</sup>.

Data on concomitant tricuspid valve annuloplasty are rare and usually focus on different techniques for repair. A recent review seemingly demonstrated evidence for tricuspid annuloplasty to be a low-risk procedure<sup>[8]</sup>. However, as highlighted in the present work, a concomitant tricuspid regurgitation reveals a delayed correction of left-sided heart disease. Our data demonstrate that standard Euroscore 2 mortality risk factors such as gender, pulmonary hypertension, renal impairment or weight of the intervention should no longer be taken into account when significant tricuspid regurgitation appears prior to surgery of left-sided heart disease and the need for tricuspid repair becomes an independent mortality risk factor.

The present study aimed to confirm that the need of concomitant tricuspid annuloplasty according to guidelines represents a far too late treatment. Patients should be addressed to heart surgery centers for an early correction of the left-side heart disease before the need of additional tricuspid valve repair procedure.

## MATERIALS AND METHODS

All patients undergoing concomitant tricuspid valve annuloplasty between January 2005 and December 2009 were included in this retrospective, single-center study. The study was approved by the local ethics committee and all patients gave their written informed consent for the procedure as well as for inclusion in this retrospective study<sup>[9]</sup>.

All surgeries were performed using full median sternotomy and extracorporeal circulation with cardiac arrest using blood cardioplegia. Tricuspid annuloplasty was performed either with a De Vega tricuspid repair<sup>[10]</sup>, a flexible Sovering® ring (Sorin Biomedica Cardio S.r.l., Saluggia, Italy) sized 26 to 36 mm<sup>[11]</sup>, or a flexible Bex® linear reducer (Gamida, France)<sup>[12]</sup>, respectively. If necessary, annuloplasty was combined with concomitant procedures to the tricuspid valve such as resection of vegetations in case of endocarditis, implantation of artificial chords or tricuspid pillar reinsertion in case of prolapse.



**Table 1** Characteristics and cardiovascular risk factors of the study patients

	<i>n</i> (%)
Age (yr)	68.3 ± 12.4
Gender	
Female	101 (56)
Male	79 (44)
Dyspnea (New York Heart Association)	
Class I	7 (4)
Class II	25 (14)
Class III	125 (69)
Class IV	23 (13)
Cardiac rhythm	
Sinus rhythm	77 (43)
Atrial fibrillation	87 (48)
Branch block	40 (22)
Pacemaker	16 (9)
Risk factors	
Arterial hypertension	79 (44)
Hypercholesterolemia	77 (43)
Tobacco	44 (24)
Diabetes	42 (23)
Lower limb or supra-aortic obstructive arteriopathy	20 (11)
Pulmonary disease	25 (14)
Cerebrovascular accident or transient ischemic attack	19 (11)
Rheumatic valve disease	40 (22)
Myocardial infarction	12 (7)
Pacemaker implantation	16 (9)
Reoperation	26 (14)
Other heart disease	
Aortic regurgitation	19 (11)
Aortic stenosis	30 (17)
Combined aortic stenosis/regurgitation	15 (8)
Mitral regurgitation	99 (55)
Mitral stenosis	21 (12)
Combined mitral stenosis/regurgitation	21 (12)
Pulmonary valve regurgitation	1 (0.6)
Coronary artery disease	28 (16)
Acute endocarditis	9 (5)
Interventricular or interatrial septal defect	3 (1.7)

The patients' health status was obtained through a questionnaire submitted to the cardiologist, to the attending physician or, in the absence of the latter, by interviewing the patient or his/her relatives by phone (if the patient was deceased).

### Statistical analysis

Data are presented as the mean ± SD for continuous data and as the number of patients and associated percentages for categorical parameters. Cox proportional-hazards regression model was performed to evaluate the impact of several covariates on mortality in a multivariate context and define prognostic factors (using a stepwise backward and forward algorithm, from variables with a  $P < 0.10$  in univariate analyses) according to the results of univariate analysis and clinical relevance.

All analyses were conducted using Stata v12® (Stata Corp, College Station, United States). The tests were two-sided, with a type I error set at  $\alpha = 0.05$  (except for multiple comparisons).

## RESULTS

Between January 2005 and December 2009, a total 180 consecutive patients underwent tricuspid valve annuloplasty in our institution. During the same period, another 3 patients underwent isolated tricuspid valve replacement and were not included in the present study. Among the 180 included patients, there were 79 males (44%) and 101 females (56%). Age ranged from 12 to 89 years; mean age was  $68.3 \pm 12.4$  years (Table 1).

Tricuspid valve regurgitation etiology was classified as functional in 154 cases (86%), organic in 16 cases (9%) and mixed in 10 cases (6%). In instances of functional tricuspid regurgitation, the main cause was degenerative mitral valve disease. In instances of organic tricuspid regurgitation, the predominant pathologies were rheumatism disease and infectious endocarditis, 9 of which required urgent surgery for acute endocarditis (Table 1).

Ninety-seven patients (45%) suffered from at least one heart failure episode, 22 with left-sided HF, 15 with right-sided HF, and 60 with global heart failure, respectively. Eighty-five patients (47%) suffered from persistent atrial fibrillation preoperatively. Further cardiovascular risk factors of the study patients are summarized in Table 1, along with preoperative echocardiographic findings in Table 2.

Tricuspid annuloplasty with a prosthetic ring was performed in 176 patients; a Sovering® ring was used in 156 cases and a Bex® linear reducer in 20 cases. In 20 cases, annuloplasty was combined with concomitant procedures for tricuspid valve: Valve repair (leaflet slit or cleft closure), vegetation resection, implantation of a Gore-Tex® cord, and one tricuspid pillar reinsertion for iatrogenic tricuspid incompetence as a consequence of pacemaker lead removal. Four 4 De Vega tricuspid repairs were performed while the remaining procedures consisted of the following: Aortic valve replacement in 29 cases (16%), mitral valve replacement in 67 cases (37%), double mitro-aortic valvular replacement in 42 cases (23%), mitral valve repair in 38 cases (21%), pulmonary valve replacement in one case (0.6%), coronary artery bypass grafting in 26 cases (14%), and other procedures in 21 cases. Only 9 patients (5%) underwent surgery for isolated tricuspid regurgitation. These patients presented with preoperative grade III or IV tricuspid incompetence. Three of these patients had a previous history of mitral or aortic valvular surgery, with tricuspid insufficiency appearing within two years postoperatively. Two of these patients had a preoperative pulmonary artery hypertension with peak gradients over 60 mmHg at their first operation. The other five patients did not present any associated left-sided heart disease.

Mean hospital stay was  $17.8 \pm 19.3$  d (range 2 to 165 d). Postoperative complications were reoperation for bleeding in 15 cases (8%) and one postoperative stroke. A total of 21 patients (11.7%) died within 30 d.

**Table 2** Preoperative and postoperative characteristics of the study patients

	mean $\pm$ SD	n (%)
Preoperative parameter		
Left ventricular ejection fraction (%)	58.6 $\pm$ 12.5	
Systolic pulmonary arterial pressure (mmHg)	58.0 $\pm$ 16.7	
Tricuspid regurgitation		
I		9 (5)
II		69 (38)
III		70 (39)
IV		32 (18)
Left ventricular end-diastolic diameter (mm)	52.7 $\pm$ 9.5 (29-74)	
Left ventricular end-systolic diameter (mm)	34.4 $\pm$ 9.3 (17-63)	
Postoperative parameter		
Left ventricular ejection fraction (%)	54.4 $\pm$ 12.2 (10-82)	
Systolic pulmonary arterial pressure (mmHg)	38.6 $\pm$ 10.6 (19-76)	
Tricuspid regurgitation		
0- I		150 (83)
II		28 (15)
III		1 (0.6)
IV		1 (0.6)
Left ventricular end-diastolic diameter (mm)	50.4 $\pm$ 7.4	
Left ventricular end-systolic diameter (mm)	35.2 $\pm$ 8.3	

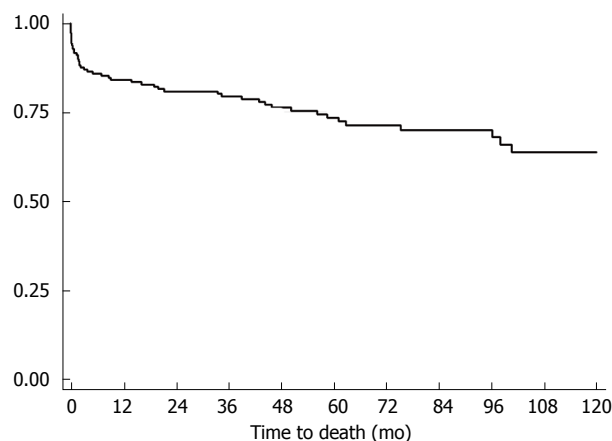
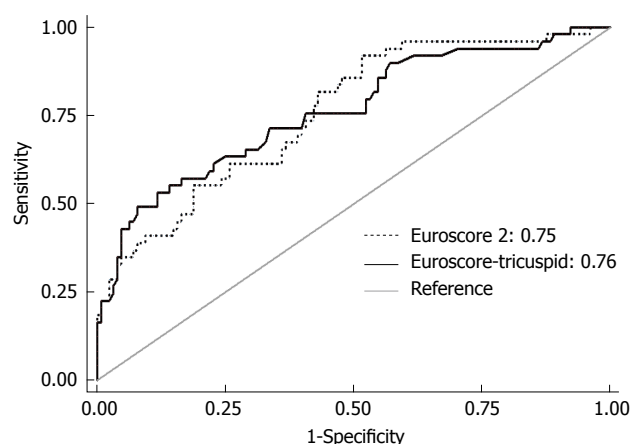
The main causes of death were multi-organ failure in 20 cases, two of whom were from massive bleeding, and one unexplained sudden death.

All patients underwent early postoperative echocardiography, demonstrating marked reduction in both tricuspid insufficiency and in systolic pulmonary artery pressure (Table 2).

Among hospital survivors, two patients (1%) were lost at follow-up, the initial analysis thus resulting in a 99% follow-up. Data from these two patients were subsequently collected in 2014. One patient living in Kathmandu returned for a control cardiology visit in our university hospital and the second patient had a control consultation in the thoracic surgery department in Clermont-Ferrand, allowing us to complete the initial follow-up. Mean follow-up was 51.7  $\pm$  39 mo with 5-year survival at 73.5% and 10-year survival at 63.8% (Figure 1). The main cause of death during the follow-up was heart failure. Only one tricuspid valve repair failed. Eight patients had a cerebrovascular event during the study period and seven patients presented with a late complete atrioventricular block requiring pacemaker implantation.

Univariate and multivariate analyses and parameters affecting global mortality (in-hospital and post-discharge) are detailed in Tables 3 and 4.

Of note, there was no significant correlation between death and several Euroscore factors such as gender, pulmonary hypertension, NYHA dyspnea level, chronic lung disease, renal impairment or weight of the intervention (Table 3). From multivariate analyses (Table 4), the adverse factors for mortality were the presence

**Figure 1** Overall patient survival.**Figure 2** ROC curve comparing Euroscore 2 and Euroscore-tricuspid.

of acute endocarditis, ischemic heart disease that required myocardial revascularization, and aortic valve stenosis, respectively. In contrast, a successful mitral valve repair appeared to have a protective effect.

When taking into account a tricuspid valve regurgitation requiring an additional tricuspid valve repair accompanying a left-sided heart disease surgery, the 18 predictive risk factors of Euroscore 2 could be reduced to a Euroscore-tricuspid of only 7 factors with an at least equivalent statistical power (Figure 2). This new Euroscore-tricuspid would require only the following patient data: Age, ischemic heart disease, insulin-treated diabetes, previous cardiac surgery (redo intervention), active endocarditis, critical preoperative state and left ventricle function less than 50%.

## DISCUSSION

Both the current American and European guidelines recommend correction of relevant functional tricuspid insufficiency if other cardiac diseases are corrected surgically<sup>[4,7]</sup> since functional tricuspid regurgitation, a frequent finding in patients undergoing cardiac surgery for other reasons<sup>[5]</sup>, has proven to increase over time when not corrected during first surgery<sup>[2]</sup>, mainly due to

**Table 3** Univariate analyses: Parameters affecting global mortality

Variable	n (%)	Univariate HR	P
Gender (male)	79 (44)	1.38 [0.77-2.44]	0.27
Age ( $\geq 75$ yr)	63 (35)	1.75 [0.98-3.11]	0.06
Tobacco use	44 (24)	1.16 [0.60-2.24]	0.66
Pulmonary disease	25 (14)	1.58 [0.74-3.40]	0.24
Pacemaker	16 (9)	2.40 [1.12-5.13]	0.02
Branch block	40 (22)	1.88 [1.01-3.47]	0.04
Previous heart failure	75 (42)	1.67 [0.94-2.95]	0.08
Ejection fraction ( $> 50\%$ )	132 (73)	0.49 [0.25-0.98]	0.044
Hypertension	79 (44)	1.81 [1.01-3.20]	0.04
Diabetes on insulin	8 (4)	2.33 [0.83-6.51]	0.11
Aortic regurgitation	19 (11)	0.52 [0.16-1.67]	0.27
Aortic disease	15 (8)	1.29 [0.51-3.26]	0.59
Mitral regurgitation	99 (55)	1.01 [0.56-1.79]	0.98
Mitral stenosis	21 (12)	0.96 [0.38-2.44]	0.93
Mitral disease	21 (12)	0.55 [0.19-1.54]	0.26
Dyslipidemia	77 (43)	0.88 [0.49-1.57]	0.67
NIDD	34 (19)	1.31 [0.64-2.64]	0.45
Cerebrovascular accident	19 (11)	1.44 [0.60-3.40]	0.41
Myocardial infarction	12 (7)	1.70 [0.67-4.30]	0.26
New York Heart Association (III/IV)	148 (82)	1.99 [0.78-5.04]	0.14
Redo <i>vs</i> Tridux	26 (14)	1.49 [0.74-3.00]	0.26
Double valve replacement associated with tricuspid repair	43 (24)	2.21 [1.11-4.39]	0.024
Sinus rhythm	77 (43)	0.74 [0.41-1.35]	0.33
Sovering ring	156 (87)	1.10 [0.49-2.46]	0.81
Bex device	20 (11)	1.16 [0.52-2.60]	0.71
Systolic pulmonary artery pressure ( $> 59$ mmHg)	98 (54)	1.06 [0.60-1.88]	0.83
Systolic pulmonary artery pressure ( $> 49$ mmHg)	31 (17)	1.16 [0.56-2.40]	0.69
Tricuspid annulus diameter ( $> 40$ mm)	20 (11)	0.31 [0.07-1.27]	0.10
Postoperative ejection fraction ( $> 50\%$ )	98 (66)	2.58 [1.31-5.08]	0.006

HR: Hazard ratio.

**Table 4** Prognostic factors for mortality in multivariate analyses

Variable	n (%)	Univariate		Multivariate	
		HR	P	HR	P
Aortic stenosis	30 (17)	2.69 [1.24-5.42]	0.011	2.60 [1.15-5.85]	0.021
Coronary disease	28 (16)	4.12 [2.06-8.21]	$< 0.001$	2.79 [1.26-6.20]	0.012
Mitral-valve repair	38 (21)	0.27 [0.08-0.88]	0.03	0.32 [0.10-0.98]	0.046
Infective endocarditis	9 (5)	5.06 [1.7-14.62]	0.003	9.22 [2.87-29.62]	$< 0.001$

HR: Hazard ratio.

progressive annular dilatation<sup>[3]</sup>. However, although factors influencing the natural course of tricuspid regurgitation over time<sup>[4]</sup> and even during long-term follow-up of over 5 years<sup>[13]</sup> as well as its deleterious effect on mortality<sup>[14]</sup> are well known, its concomitant correction has yet to be performed to an adequate extent<sup>[1]</sup>. In the present study, the conducting of a successful mitral valve repair was found to be a protective factor when tricuspid annuloplasty was performed in patients with significant mitral regurgitation.

Acute endocarditis, associated ischemic heart disease and double valve replacement combined with tricuspid regurgitation were the main risk factors for hospital mortality in this study. Surprisingly, there was no correlation between elevated pulmonary arterial pressure, advanced age, preexisting arrhythmias and mid-term mortality results as conversely reported by

others<sup>[15]</sup>.

The 11.7% hospital mortality rate observed herein, mainly driven by multi-organ failure, is a reflection of the high rate of concomitant procedures. Other studies have reported hospital mortality rates of up to 35% in patients undergoing tricuspid valve repair as a concomitant procedure to other cardiac surgery<sup>[16,17]</sup>.

The use of a flexible ring represented the technique of choice in the present series. Easy implantation, avoidance of a suture close to the conduction system, measured reduction of the tricuspid annulus and preservation of the valve's normal physiological shape are among the related advantages of this approach<sup>[18]</sup>. For dilatation of the tricuspid annulus, annuloplasty alone provides excellent results in the absence of valvular or subvalvular disease<sup>[3]</sup>; however, it is no longer effective in correcting tricuspid regurgitation if there is also damage

of the leaflets and of the subvalvular apparatus, and/or in instances where additional procedures are required<sup>[18,19]</sup>. Accordingly, less-than-moderate tricuspid regurgitation prior to discharge after tricuspid annuloplasty during redo valve surgery additionally proved to be an independent risk factor for better long-term outcome in terms of survival in a recent retrospective analysis<sup>[20]</sup>. Furthermore, concomitant tricuspid annuloplasty using flexible bands offered improved durability as compared to suture annuloplasty for preventing postoperative tricuspid regurgitation progression in two retrospective comparative analyses<sup>[21,22]</sup>. In the current series, 20 patients underwent a concomitant valvular or subvalvular procedure, without any added mortality or morbidity.

Recent clinical studies have demonstrated that moderate to severe residual tricuspid regurgitation still persists in 10% of patients who have undergone surgical repair<sup>[18]</sup>. Tricuspid regurgitation is related to the degree of limited leaflet motion and to the severity of the dilatation of the tricuspid annulus. The severity of preoperative tricuspid regurgitation, together with right ventricular dysfunction, contributes to postoperative residual insufficiency. Risk factors for recurrent tricuspid regurgitation are preoperative severe regurgitation, tricuspid repair without a prosthetic ring or with an oversized ring (large tricuspid valve), pacemaker catheters that pass through the tricuspid valve, mitral valve replacement rather than mitral repair, left ventricular dysfunction associated or not with advanced remodelling, cardiomegaly and atrial fibrillation<sup>[19]</sup>.

Finally and surprisingly, we found that mortality predictor scores such as Euroscore 2 could be shortened to a simple Euroscore-tricuspid of only 7 inputs. From our standpoint, the explanation may reside in the fact that significant tricuspid regurgitation following a left-sided heart disease is an independent risk factor encompassing several other factors such as pulmonary arterial hypertension and dyspnea. Such finding has been reported in several studies of other diseases with regard to aortic and mitral valve diseases which also corroborate the present data embodying multiple diseases at once<sup>[23-25]</sup>.

The present study demonstrates the efficacy and durability of tricuspid annuloplasty with an open flexible ring. This procedure may be performed in patients with severe left-sided valve disease. Patients with functional damage of the right side of the heart combined with significant functional tricuspid regurgitation have poor mid-term results along with high mortality. A concomitant tricuspid regurgitation typically reveals a delayed correction of left-sided heart disease.

## COMMENTS

### Background

The concomitant correction of functional tricuspid regurgitation secondary to left heart disease requiring surgery remains underused and an associated functional tricuspid regurgitation typically reveals a delayed correction of left-sided heart disease.

### Research frontiers

Functional tricuspid valve regurgitation concerns patients who are referred

to heart surgery for left-sided heart disease too late. Results of this study contribute to clarify these patients' clinical situation.

### Innovations and breakthroughs

In this study, when a tricuspid regurgitation required the need for concomitant tricuspid valve repair, mortality predictor scores such as Euroscore 2 could be shortened to a simple Euroscore-tricuspid comprised of only 7 inputs. The explanation may lie in the fact that significant tricuspid regurgitation following left-sided heart disease represents an independent risk factor encompassing several other factors such as pulmonary arterial hypertension and dyspnea.

### Applications

The present study demonstrates the efficacy and durability of tricuspid annuloplasty with an open flexible ring.

### Peer-review

The study aimed the need of concomitant tricuspid annuloplasty for an early correction of the left-side heart disease. The author conducted retrospective multivariate analysis for significant variables in univariate analyses in 180 cases with tricuspid annuloplasty. The 5-10 years follow-up observation find out the risk factors for mortality were acute endocarditis, ischemic heart disease requiring myocardial revascularization, and aortic valve stenosis. Significant predictive factors from univariate analyses were double-valve replacement combined with tricuspid annuloplasty and preoperatively impaired ejection fraction. The author concluded that tricuspid annuloplasty should be used more often as concomitant procedure if relevant tricuspid regurgitation is present. The study suggests that the predictor scores could be shortened to a simple Euroscore-tricuspid of only 7 inputs. Functional tricuspid regurgitation may be frequently found in patients undergoing cardiac surgery from other reasons. It will become more severe over time if not corrected during first surgery. It is significant to have an investigation on the outcomes of tricuspid valve repair accompanying left-sided heart disease surgery. This manuscript retrospectively investigated this topic, discussed the advantages of the correction surgery at the same time, analyzed the risk factors and concluded to simplify using the predictive factors.

## REFERENCES

- 1 **Rogers JH**, Bolling SF. Valve repair for functional tricuspid valve regurgitation: anatomical and surgical considerations. *Semin Thorac Cardiovasc Surg* 2010; **22**: 84-89 [PMID: 20813323 DOI: 10.1053/j.semtcvs.2010.05.001]
- 2 **Chikwe J**, Anyanwu AC. Surgical strategies for functional tricuspid regurgitation. *Semin Thorac Cardiovasc Surg* 2010; **22**: 90-96 [PMID: 20813324 DOI: 10.1053/j.semtcvs.2010.05.002]
- 3 **Dreyfus GD**, Corbi PJ, Chan KM, Bahrami T. Secondary tricuspid regurgitation or dilatation: which should be the criteria for surgical repair? *Ann Thorac Surg* 2005; **79**: 127-132 [PMID: 15620928 DOI: 10.1016/j.athoracsur.2004.06.057]
- 4 **Vahanian A**, Alfieri O, Andreotti F, Antunes MJ, Barón-Esquivias G, Baumgartner H, Borger MA, Carrel TP, De Bonis M, Evangelista A, Falk V, Lung B, Lancellotti P, Pierard L, Price S, Schäfers HJ, Schuler G, Stepinska J, Swedberg K, Takkenberg J, Von Oppell UO, Windecker S, Zamorano JL, Zembala M; ESC Committee for Practice Guidelines (CPG); Joint Task Force on the Management of Valvular Heart Disease of the European Society of Cardiology (ESC); European Association for Cardio-Thoracic Surgery (EACTS). Guidelines on the management of valvular heart disease (version 2012): the Joint Task Force on the Management of Valvular Heart Disease of the European Society of Cardiology (ESC) and the European Association for Cardio-Thoracic Surgery (EACTS). *Eur J Cardiothorac Surg* 2012; **42**: S1-44 [PMID: 22922698 DOI: 10.1093/ejcts/ezs455]
- 5 **Freed LA**, Levy D, Levine RA, Larson MG, Evans JC, Fuller DL, Lehman B, Benjamin EJ. Prevalence and clinical outcome of mitral-valve prolapse. *N Engl J Med* 1999; **341**: 1-7 [PMID: 10387935 DOI: 10.1056/NEJM199907013410101]
- 6 **Sagie A**, Schwammenthal E, Padial LR, Vazquez de Prada JA, Weyman AE, Levine RA. Determinants of functional tricuspid regurgitation in incomplete tricuspid valve closure: Doppler color flow



- study of 109 patients. *J Am Coll Cardiol* 1994; **24**: 446-453 [PMID: 8034882 DOI: 10.1016/0735-1097(94)90302-6]
- 7 **Nishimura RA**, Otto CM, Bonow RO, Carabello BA, Erwin JP, Guyton RA, O'Gara PT, Ruiz CE, Skubas NJ, Sorajja P, Sundt TM, Thomas JD, Anderson JL, Halperin JL, Albert NM, Bozkurt B, Brindis RG, Creager MA, Curtis LH, DeMets D, Guyton RA, Hochman JS, Kovacs RJ, Ohman EM, Pressler SJ, Sellke FW, Shen WK, Stevenson WG, Yancy CW; American College of Cardiology; American College of Cardiology/American Heart Association; American Heart Association. 2014 AHA/ACC guideline for the management of patients with valvular heart disease: a report of the American College of Cardiology/American Heart Association Task Force on Practice Guidelines. *J Thorac Cardiovasc Surg* 2014; **148**: e1-e132 [PMID: 24939033 DOI: 10.1016/j.jtcvs.2014.05.014]
  - 8 **Zhu TY**, Wang JG, Meng X. Does concomitant tricuspid annuloplasty increase perioperative mortality and morbidity when correcting left-sided valve disease? *Interact Cardiovasc Thorac Surg* 2015; **20**: 114-118 [PMID: 25260896 DOI: 10.1093/icvts/ivu326]
  - 9 **Claudot F**, Alla F, Fresson J, Calvez T, Coudane H, Bonañiti-Pellié C. Ethics and observational studies in medical research: various rules in a common framework. *Int J Epidemiol* 2009; **38**: 1104-1108 [PMID: 19336436 DOI: 10.1093/ije/dyp164]
  - 10 **De Vega NG**, De Rábago G, Castillón L, Moreno T, Azpitarte J. A new tricuspid repair. Short-term clinical results in 23 cases. *J Cardiovasc Surg (Torino)* 1973; **Spec No**: 384-386 [PMID: 4806877]
  - 11 **Della Barbera M**, Laborde F, Thiene G, Arata V, Pettenazzo E, Pasquino E, Behr L, Valente M. Sovering annuloplasty rings: experimental pathology in the sheep model. *Cardiovasc Pathol* 2005; **14**: 96-103 [PMID: 15780801 DOI: 10.1016/j.carpath.2004.12.005]
  - 12 **Camilleri LF**, Miguel B, Bailly P, Legault BJ, D'Agrosa-Boiteux MC, Polvani GL, de Riberolles CM. Flexible posterior mitral annuloplasty: five-year clinical and Doppler echocardiographic results. *Ann Thorac Surg* 1998; **66**: 1692-1697 [PMID: 9875773 DOI: 10.1016/S0003-4975(98)00890-X]
  - 13 **Song H**, Kim MJ, Chung CH, Choo SJ, Song MG, Song JM, Kang DH, Lee JW, Song JK. Factors associated with development of late significant tricuspid regurgitation after successful left-sided valve surgery. *Heart* 2009; **95**: 931-936 [PMID: 19321491 DOI: 10.1136/hrt.2008.152793]
  - 14 **Dreyfus GD**, Chan KM. Functional tricuspid regurgitation: a more complex entity than it appears. *Heart* 2009; **95**: 868-869 [PMID: 19321490 DOI: 10.1136/hrt.2008.159970]
  - 15 **Kay GL**, Morita S, Mendez M, Zubiato P, Kay JH. Tricuspid regurgitation associated with mitral valve disease: repair and replacement. *Ann Thorac Surg* 1989; **48**: S93-S95 [PMID: 2774761 DOI: 10.1016/0003-4975(89)90656-5]
  - 16 **Bernal JM**, Morales D, Revuelta C, Llorca J, Gutiérrez-Morlote J, Revuelta JM. Reoperations after tricuspid valve repair. *J Thorac Cardiovasc Surg* 2005; **130**: 498-503 [PMID: 16077419 DOI: 10.1016/j.jtcvs.2004.12.044]
  - 17 **Scully HE**, Armstrong CS. Tricuspid valve replacement. Fifteen years of experience with mechanical prostheses and bioprostheses. *J Thorac Cardiovasc Surg* 1995; **109**: 1035-1041 [PMID: 7776666 DOI: 10.1016/S0022-5223(95)70185-0]
  - 18 **McCarthy PM**, Bhudia SK, Rajeswaran J, Hoercher KJ, Lytle BW, Cosgrove DM, Blackstone EH. Tricuspid valve repair: durability and risk factors for failure. *J Thorac Cardiovasc Surg* 2004; **127**: 674-685 [PMID: 15001895 DOI: 10.1016/j.jtcvs.2003.11.019]
  - 19 **Navia JL**, Nowicki ER, Blackstone EH, Brozzi NA, Nento DE, Atik FA, Rajeswaran J, Gillinov AM, Svensson LG, Lytle BW. Surgical management of secondary tricuspid valve regurgitation: annulus, commissure, or leaflet procedure? *J Thorac Cardiovasc Surg* 2010; **139**: 1473-1482.e5 [PMID: 20394950 DOI: 10.1016/j.jtcvs.2010.02.046]
  - 20 **Fukunaga N**, Okada Y, Konishi Y, Murashita T, Koyama T. Persistent tricuspid regurgitation after tricuspid annuloplasty during redo valve surgery affects late survival and valve-related events. *Circ J* 2014; **78**: 2696-2703 [PMID: 25274058]
  - 21 **Murashita T**, Okada Y, Kanemitsu H, Fukunaga N, Konishi Y, Nakamura K, Koyama T. Long-term outcomes of tricuspid annuloplasty for functional tricuspid regurgitation associated with degenerative mitral regurgitation: suture annuloplasty versus ring annuloplasty using a flexible band. *Ann Thorac Cardiovasc Surg* 2014; **20**: 1026-1033 [PMID: 24583707 DOI: 10.5761/atcs.0a.13-00292]
  - 22 **Huang X**, Gu C, Men X, Zhang J, You B, Zhang H, Wei H, Li J. Repair of functional tricuspid regurgitation: comparison between suture annuloplasty and rings annuloplasty. *Ann Thorac Surg* 2014; **97**: 1286-1292 [PMID: 24370203 DOI: 10.1016/j.athoracsur.2013.10.037]
  - 23 **Dahou A**, Magne J, Clavel MA, Capoulade R, Bartko PE, Bergler-Klein J, Sénéchal M, Mundtler G, Burwash I, Ribeiro HB, O'Connor K, Mathieu P, Baumgartner H, Dumesnil JG, Rosenhek R, Larose E, Rodés-Cabau J, Pibarot P. Tricuspid Regurgitation Is Associated With Increased Risk of Mortality in Patients With Low-Flow Low-Gradient Aortic Stenosis and Reduced Ejection Fraction: Results of the Multicenter TOPAS Study (True or Pseudo-Severe Aortic Stenosis). *JACC Cardiovasc Interv* 2015; **8**: 588-596 [PMID: 25819185 DOI: 10.1016/j.jcin.2014.08.019]
  - 24 **Barbanti M**, Binder RK, Dvir D, Tan J, Freeman M, Thompson CR, Cheung A, Wood DA, Leipsic J, Webb JG. Prevalence and impact of preoperative moderate/severe tricuspid regurgitation on patients undergoing transcatheter aortic valve replacement. *Catheter Cardiovasc Interv* 2015; **85**: 677-684 [PMID: 24740834 DOI: 10.1002/ccd.25512]
  - 25 **Briongos Figuero S**, Moya Mur JL, García-Lledó A, Centella T, Salido L, Aceña Navarro Á, García Martín A, García-Andrade I, Oliva E, Zamorano JL. Predictors of persistent pulmonary hypertension after mitral valve replacement. *Heart Vessels* 2016; **31**: 1091-1099 [PMID: 26056027 DOI: 10.1007/s00380-015-0700-2]

P- Reviewer: Ong HT, Zhang XQ S- Editor: Song XX L- Editor: A  
E- Editor: Lu YJ





## Mining twitter to understand the smoking cessation barriers

Chayakrit Krittanawong, Zhen Wang

Chayakrit Krittanawong, Department of Internal Medicine, Icahn School of Medicine at Mount Sinai St. Luke's and Mount Sinai West, New York, NY 10023, United States

Chayakrit Krittanawong, Department of Cardiovascular Medicine, Heart and Vascular Institute, Cleveland Clinic, Cleveland, OH 44195, United States

Zhen Wang, Robert D. and Patricia E. Kern Center for the Science of Health Care Delivery, Mayo Clinic, Rochester, MN 55905, United States

Zhen Wang, Division of Health Care Policy and Research, Department of Health Sciences Research, Mayo Clinic, Rochester, MN 55905, United States

**Author contributions:** All authors contributed to this paper.

**Conflict-of-interest statement:** None.

**Open-Access:** This article is an open-access article which was selected by an in-house editor and fully peer-reviewed by external reviewers. It is distributed in accordance with the Creative Commons Attribution Non Commercial (CC BY-NC 4.0) license, which permits others to distribute, remix, adapt, build upon this work non-commercially, and license their derivative works on different terms, provided the original work is properly cited and the use is non-commercial. See: <http://creativecommons.org/licenses/by-nc/4.0/>

**Manuscript source:** Unsolicited manuscript

**Correspondence to:** Chayakrit Krittanawong, MD, Department of Internal Medicine, Icahn School of Medicine at Mount Sinai St. Luke's and Mount Sinai West, 1000 10<sup>th</sup> Ave, New York, NY 10023, United States. [chayakrit.krittanawong@mountsinai.org](mailto:chayakrit.krittanawong@mountsinai.org)  
**Telephone:** +1-212-5234000  
**Fax:** +1-212-5238605

**Received:** April 10, 2017

**Peer-review started:** April 12, 2017

**First decision:** May 9, 2017

**Revised:** June 2, 2017

**Accepted:** June 19, 2017

**Article in press:** June 20, 2017

**Published online:** October 26, 2017

### Abstract

Smoking cessation is challenging and lack of positive support is a known major barrier to quitting cigarettes. Previous studies have suggested that social influences might increase smokers' awareness of social norms for appropriate behavior, which might lead to smoking cessation. Although social media use is increasing among young adults in the United States, research on the relationship between social media use and smoking cessation is lacking. Twitter has provided a rich source of information for researchers, but no overview exists as to how the field uses Twitter in smoking cessation research. To the best of our knowledge, this study conducted a data mining analysis of Twitter to assess barriers to smoking cessation. In conclusion, Twitter is a cost-effective tool with the potential to disseminate information on the benefits of smoking cessation and updated research to the Twitter community on a global scale.

**Key words:** Smoking cessation; Stop smoking; Smoking; Twitter; Tweets

© **The Author(s) 2017.** Published by Baishideng Publishing Group Inc. All rights reserved.

**Core tip:** Twitter use is increasing globally, research on the relationship between Twitter use and smoking cessation is lacking. This study is to the best of our knowledge the first Twitter analytic study of smoking cessation. Twitter is a cost-effective tool with the potential to disseminate information on the benefits of smoking cessation and updated research to the Twitter community on a global scale. Digital health interventions through Twitter that educate the health community are still needed.

Krittanawong C, Wang Z. Mining twitter to understand the smoking cessation barriers. *World J Cardiol* 2017; 9(10): 794-795  
Available from: <http://www.wjgnet.com/1949-8462/full/v9/i10/794.htm> DOI: <http://dx.doi.org/10.4330/wjc.v9.i10.794>

## TO THE EDITOR

Smoking cessation is challenging and lack of positive support is a known major barrier to quitting cigarettes. Previous studies have suggested that social influences might increase smokers' awareness of social norms for appropriate behavior, which might lead to smoking cessation<sup>[1,2]</sup>. Although social media use is increasing among young adults in the United States, research on the relationship between social media use and smoking cessation is lacking. Recent studies have shown that Twitter data mining can have broad implications on cardiovascular health research<sup>[3,4]</sup>. We report on an assessment of barriers to smoking cessation by performing data mining in Twitter.

Twitter (<https://twitter.com/>) postings containing the terms "quit smoking", "smoking cessation", and "stop smoking" were obtained for July 23, 2009, through November 22, 2016. All analyses relied on public, anonymized data and adhere to the terms and conditions, terms of use, and privacy policies of Twitter. No exact tweets are included in this report. Data mining were performed with R version 3.2.3.

We identified 39731 tweets associated with smoking cessation and identified insights into people's perceptions of quitting smoking and some barriers to cessation. In the sample, 12375 retweets (reposted or forwarded messages) were excluded from the analysis. The results found 13099 negative statements, 4425 positive statements, and 9832 ambiguous or unclear statements. Reasons to not quit smoking were found in 965 tweets. For example, "someone dies from smoking, someone dies from a heart attack, what's the difference both are dead". Some tweets reported a social influence on smoking

cessation, such as "sometimes I think people only quit smoking for the Facebook likes". Some tweets did not report barriers to smoking cessation. For example, "I wonder how many times I'm going to quit smoking". A few tweets stated a need for more information from the community, such as "yoo is there anyone on here who has quit smoking successfully and can give me sum tips". Several academic institutions have been using Twitter to deliver health messages to the community. For example, "smoking increases the risk of death from lung cancer, heart attack and stroke by 200%".

Overall, Twitter is a cost-effective tool with the potential to disseminate information on the benefits of smoking cessation and updated research to the Twitter community on a global scale. Digital health interventions through Twitter that educate the health community are still needed.

## REFERENCES

- 1 **van den Putte B**, Yzer MC, Brunsting S. Social influences on smoking cessation: a comparison of the effect of six social influence variables. *Prev Med* 2005; **41**: 186-193 [PMID: 15917010 DOI: 10.1016/j.ypmed.2004.09.040]
- 2 **Dijkstra M**, Mesters I, De Vries H, van Breukelen G, Parcel GS. Effectiveness of a social influence approach and boosters to smoking prevention. *Health Educ Res* 1999; **14**: 791-802 [PMID: 10585386 DOI: 10.1093/her/14.6.791]
- 3 **Krittanawong C**, Tunhasiriwet A, Chirapongsathorn S, Kitai T. Tweeting influenza vaccine to cardiovascular health community. *Eur J Cardiovasc Nurs* 2017; Epub ahead of print [PMID: 28440668 DOI: 10.1177/1474515117707867]
- 4 **Krittanawong C**, Aydar M, Kitai T. Pokémon Go: digital health interventions to reduce cardiovascular risk. *Cardiol Young* 2017; 1-2 [PMID: 28414007 DOI: 10.1017/S1047951117000749]

**P- Reviewer:** Masaki T, Peteiro J **S- Editor:** Ji FF **L- Editor:** A  
**E- Editor:** Lu YJ





Published by **Baishideng Publishing Group Inc**  
7901 Stoneridge Drive, Suite 501, Pleasanton, CA 94588, USA  
Telephone: +1-925-223-8242  
Fax: +1-925-223-8243  
E-mail: [bpgoffice@wjgnet.com](mailto:bpgoffice@wjgnet.com)  
Help Desk: <http://www.f6publishing.com/helpdesk>  
<http://www.wjgnet.com>

