

# World Journal of *Diabetes*

*World J Diabetes* 2012 August 15; 3(8): 142-157





## Editorial Board

2010-2015

The *World Journal of Diabetes* Editorial Board consists of 323 members, representing a team of worldwide experts in diabetes mellitus. They are from 38 countries, including Argentina (1), Australia (13), Austria (6), Belgium (1), Brazil (3), Canada (14), China (21), Czech Republic (3), Denmark (9), Egypt (2), Finland (3), France (5), Germany (17), Greece (10), Hungary (2), India (10), Ireland (2), Iran (2), Israel (5), Italy (25), Japan (17), Malta (1), Netherlands (5), New Zealand (3), Oman (1), Poland (4), Romania (1), Singapore (2), South Korea (9), Spain (14), Sweden (3), Switzerland (1), Thailand (2), Turkey (9), United Arab Emirates (2), United Kingdom (11), United States (83), and Venezuela (1).

### EDITOR-IN-CHIEF

Donald W Bowden, *Winston-Salem*  
Lu Qi, *Boston*

### STRATEGY ASSOCIATE

#### EDITORS-IN-CHIEF

Undurti Narasimha Das, *Ohio*  
Min Du, *Wyoming*  
Gregory I Liou, *Georgia*  
Zhong-Cheng Luo, *Quebec*  
Demosthenes B Panagiotakos, *Athens*

### GUEST EDITORIAL BOARD MEMBERS

Cheng-Cheng Hsiao, *Keelung*  
Low-Tone Ho, *Taipei*  
Yung-Hsi Kao, *Taoyuan*  
Eing-Mei Tsai, *Kaohsiung*

### MEMBERS OF THE EDITORIAL BOARD



#### Argentina

Eduardo Spinedi, *La Plata*



#### Australia

Sof Andrikopoulos, *Victoria*  
Hugh Russell Barrett, *Western*  
Bernhard T Baune, *Townsville*  
Grant Brinkworth, *Southern*  
Louise JM Brown, *Northern*  
Josephine Maree Forbes, *Victoria*  
Anandwardhan A Hardikar, *Victoria*

Peter J Little, *Victoria*  
Dianna Josephine Magliano, *Victoria*  
Beverly Sara Muhlhausler, *Southern*  
Christopher Nolan, *Canberra*  
Greg Tesch, *Victoria*  
Jack Ronald Wall, *New South Wales*



#### Austria

Helmuth Martin Borkenstein, *Graz*  
Friedrich Mittermayer, *Vienna*  
Markus Paulmichl, *Salzburg*  
Stefan Pilz, *Graz*  
Harald Sourij, *Graz*  
Ludwig Wagner, *Vienna*



#### Belgium

Luc F Van Gaal, *Edegem*



#### Brazil

Monica Levy Andersen, *São Paulo*  
Rodrigo Jorge, *Ribeirão Preto*  
Bernardo L Wajchenberg, *São Paulo*



#### Canada

Subrata Chakrabarti, *Ontario*  
Mervyn Deitel, *Toronto*  
Tian-Ru Jin, *Ontario*

Arulmozhi D Kandasamy, *Alberta*  
Ismail Laher, *Vancouver*  
Zhong-Cheng Luo, *Quebec*  
RS McIntyre, *Toronto*  
Raj Padwal, *Alberta*  
Ciriaco A Piccirillo, *Quebec*  
Valerie Taylor, *Ontario*  
Cory Toth, *Calgary*  
André Tremblay, *Quebec*  
James Roscoe Wright, *Alberta*  
Xi-Long Zheng, *Alberta*



#### China

Jie Chen, *Nanjing*  
Bernard MY Cheung, *Hong Kong*  
William Chi-Shing Cho, *Hong Kong*  
Tian-Pei Hong, *Beijing*  
Qin Huang, *Shanghai*  
Po Sing Leung, *Hong Kong*  
Lie-Gang Liu, *Wuhan*  
Jin-Sheng Qi, *Shijiazhuang*  
Cheuk Chun Szeto, *Hong Kong*  
Kathryn Tan, *Hong Kong*  
Guang-Da Xiang, *Wuhan*  
Bao-Feng Yang, *Harbin*  
Shu-Yu Yang, *Xiamen*  
Zai-Qing Yang, *Wuhan*  
Shan-Dong Ye, *Hefei*  
Zhi-Guang Zhou, *Changsha*



#### Czech Republic

Martin Haluzik, *Praha*

Michal Krcma, *Plzen*  
Terezie Pelikanova, *Prague*



#### **Denmark**

Charlotte Brøns, *Gentofte*  
Jens D Mikkelsen, *Copenhagen O*  
Flemming Dela, *Copenhagen N*  
Kristine Færch, *Gentofte*  
R Scott Heller, *Gentofte*  
Sandahl Christiansen, *Aarhus C*  
Filip K Knop, *Hellerup*  
Esben T Vestergaard, *Aarhus N*  
Milan Zdravkovic, *Søborg*



#### **Egypt**

Moshira AH Rateb, *Cairo*  
Mona Farag Schaalán, *Cairo*



#### **Finland**

Gang Hu, *Helsinki*  
Qing Qiao, *Helsinki*  
Karoliina Wehkalampi, *Helsinki*



#### **France**

Jean-Philippe Lavigne, *Nîmes Cedex*  
Marie-Claude Morice, *Massy*  
Gérard Said, *Paris*  
Sophie Visvikis Siest, *Nancy*  
Didier Vieau, *Villeneuve d'Ascq cédex*



#### **Germany**

Ioanna Gouni Berthold, *Cologne*  
Roland Büttner, *Heidelberg*  
Hammes Hans-Peter, *Mannheim*  
Andrea Icks, *Düsseldorf*  
Ulrich Arthur Julius, *Dresden*  
Michael Kluge, *Munich*  
Matthias Laudes, *Köln*  
Ralf Lobmann, *Stuttgart*  
Karsten Müssig, *Tübingen*  
Rafael T Mikolajczyk, *Bremen*  
Nahid Parvizi, *Neustadt a. Rbg*  
Thomas Peter Reinehr, *Datteln*  
Michael Ristow, *Jena*  
Sven Schinner, *Duesseldorf*  
Ovidiu A Stirban, *Bad Oeynhausen*  
Silvia Anette Wein, *Kiel*  
Christian Wrede, *Berlin*



#### **Greece**

Moses S Elisaf, *Ioannina*  
Nikolaos Kadoğlu, *Thessaloniki*  
Gerasimos E Krassas, *Krini*  
Demosthenes B Panagiotakos, *Athens*

Nikolaos Papanas, *Alexandroupolis*  
Dimitrios Papazoglou, *Alexandroupolis*  
Melpomeni Peppas, *Athens*  
Nicholas K Tentolouris, *Athens*  
Konstantinos Tziomalos, *Thessaloniki*  
Elias Zintzaras, *Larissa*



#### **Hungary**

György Jermendy, *Maglodi*  
Károly Racz, *Szentkirályi*



#### **India**

Sarika Arora, *New Delhi*  
Subhabrata Chakrabarti, *Hyderabad*  
Tapan K Chaudhuri, *New Delhi*  
Kanwaljit Chopra, *Chandigarh*  
Ravinder Goswami, *New Delhi*  
SP Murthy, *Bangalore*  
Viswanathan Mohan, *Chennai*  
Anoop Misra, *New Delhi*  
A Ramachandran, *Egmore Chennai*  
Geetha Vani Rayasam, *Haryana*



#### **Ireland**

Amar Agha, *Dublin*  
Mark Philip Hehir, *Dublin*



#### **Iran**

Mohammad Abdollahi, *Tehran*  
Ahmad Esmailzadeh, *Isfahan*



#### **Israel**

Shimon Efrat, *Tel Aviv*  
Oren Froy, *Rehovot*  
Eleazar Shafrir, *Jerusalem*  
Haim Werner, *Tel Aviv*  
Marina S Zimlichman, *Holon*



#### **Italy**

Antonio Aversa, *Rome*  
Alessandro Bartolomucci, *Parma*  
Giuseppina Basta, *Pisa*  
Simona Bertoli, *Milano*  
Fabio Broglio, *Torino*  
Renzo Cordera, *Genova*  
Maurizio Galderisi, *Naples*  
Ezio Ghigo, *Turin*  
Carla Giordano, *Palermo*  
Riccarda Granata, *Turin*  
Giorgio Iervasi, *Pisa*  
Paolo Magni, *Milan*  
Melania Manco, *Rome*  
Piero Marchetti, *Pisa*

Lucia Pacifico, *Rome*  
Stefano Palomba, *Catanzaro*  
Giampaolo Papi, *Carpi*  
Piermarco Piatti, *Milano*  
Dario Pitocco, *Rome*  
Manfredi Rizzo, *Palermo*  
Raffaella Rosso, *Genoa*  
Giuseppe Schillaci, *Perugia*  
Giovanni Targher, *Verona*  
Alberto Verrotti, *Chieti*  
Andrea Viggiano, *Napoli*



#### **Japan**

Masato Asahina, *Chiba*  
Takuya Awata, *Saitama-ken*  
Satoshi Inoue, *Tokyo*  
Takashi Kadowaki, *Tokyo*  
Noriyuki Koibuchi, *Gunma*  
Norikazu Maeda, *Osaka*  
Kazuaki Nishio, *Tokyo*  
Kenji Okumura, *Nagoya*  
Toshiyasu Sasaoka, *Toyama*  
Michio Shimabukuro, *Okinawa*  
Kohzo Takebayashi, *Saitama*  
Takashi Togo, *Yokohama*  
Jun Udagawa, *Izumo*  
Takuya Watanabe, *Tokyo*  
Toshihiko Yada, *Tochigi*  
Daisuke Yasuhara, *Kagoshima*  
Tohru Yorifuji, *Kyoto*



#### **Malta**

Charles Savona Ventura, *Msida*



#### **Netherlands**

Sander Kersten, *Wageningen*  
Edwin Mariman, *Maastricht*  
Don Poldermans, *Rotterdam*  
François Pouwer, *LE Tilburg*  
Suat Simsek, *Alkmaar*



#### **New Zealand**

Paul Hofman, *Auckland*  
Peter E Lobie, *Auckland*  
Elaine Rush, *Auckland*



#### **Oman**

Jumana S Saleh, *Muscat*



#### **Poland**

Jerzy Beltowski, *Lublin*  
Alicia H Dydejczyk, *Krakow*  
Maciej Owecki, *Poznań*  
Dorota Anna Zieba, *Krakow*

**Romania**

Elena Ganea, *Bucharest*

**Singapore**

S Thameem Dheen, *Singapore*  
Yung Seng Lee, *Singapore*

**South Korea**

Won Mi Hwang, *Seoul*  
Eui-Bae Jeung, *Chungbuk*  
Ju-Hee Kang, *Incheon*  
Sin Gon Kim, *Seongbuk-Gu*  
Young-Gyu Ko, *Seoul*  
Kang-Beom Kwon, *Chonbuk*  
Byung-Hyun Park, *Jeonbuk*  
Seungjoon Park, *Seoul*  
Kun-Ho Yoon, *Secho-Gu*

**Spain**

M Lusía Bonet, *Palma de Mallorca*  
Manuel VCarrera, *Barcelona*  
Justo P Castaño, *Cordoba*  
Javier Espino, *Badajoz*  
Oreste Gualillo, *Santiago*  
Emilio Herrera, *Madrid*  
Amelia Martí, *Pamplona*  
Ricardo V García Mayor, *Vigo*  
JF Navarro-González, *Tenerife*  
Maria Javier Ramirez, *Pamplona*  
José MG Sáez, *Barcelona*  
Helmut Schröder, *Barcelona*  
Segundo Carmen Segundo, *Cádiz*  
SimRafael Simó, *Barcelona*

**Sweden**

Mozhgan Dorkhan, *Malmö*  
Shao-Nian Yang, *Stockholm*  
Weili Xu, *Stockholm*

**Switzerland**

Pascal Bovet, *Lausanne*

**Thailand**

N Charoenphandhu, *Bangkok*  
Viroj Wiwanitkit, *Bangkok*

**Turkey**

Ugur Cavlak, *Denizli*  
Teoman Dogru, *Ankara*  
Abdurrahman F Fidan, *Afyonkarahisar*  
Muammer Karadeniz, *Bornova-Izmir*  
Cevdet Kaya, *Istanbul*  
Fahrettin Kelestimur, *Kayseri*  
Mustafa Şahin, *Mecburi Hizmet*  
Ilker Tasci, *Ankara*  
Belma Turan, *Ankara*

**United Arab Emirates**

Ernest A Adeghate, *Al Ain*  
Samir M Awadallah, *Sharjah*

**United Kingdom**

Chen Bing, *Liverpool*  
Peter John Grant, *Leeds*  
Lora Katherine Heisler, *Cambridge*  
Nigel Hoggard, *Scotland*  
Andreas F Kolb, *Scotland*  
Stefan Marciniak, *Cambridge*  
Moffat Joha Nyirenda, *Scotland*  
Thozhukat Sathyapalan, *Yorkshire*  
Latika Sibal, *Newcastle upon Tyne*  
Abd A Tahrani, *Birmingham*  
G Neil Thomas, *Birmingham*

**United States**

Hwyda A Arafat, *Pennsylvania*  
Sanford A Asher, *Pennsylvania*  
Daniel C Battle, *Illinois*  
David SH Bell, *Alabama*  
Donald W Bowden, *North Carolina*  
Lu Cai, *Kentucky*  
Jack D Caldwell, *Pennsylvania*  
Anna C Calkin, *California*  
Roberto A Calle, *Connecticut*  
Heping Cao, *Los Angeles*  
Krista Casazza, *Birmingham*  
Xiao-Li Chen, *Saint Paul*  
Craig Ian Coleman, *Connecticut*  
Patricia Ann D'Amore, *Massachusetts*  
Michael Harvey Davidson, *Illinois*  
Samuel C Durso, *Maryland*  
Alexander M Efanov, *Indiana*  
Amy Zhihong Fan, *Georgia*  
Alessia Fornoni, *Florida*  
Gunjan Y Gandhi, *Florida*  
Raimund Hirschberg, *California*  
Michael Francis Holick, *Massachusetts*  
Rachel Mary Hudacko, *New Brunswick*  
Hieronim Jakubowski, *New Jersey*

Marilyn Jefferson, *New York*  
Hong-Lin Jiang, *Virginia*  
Richard Evers Katholi, *Springfield*  
Tomoshige Kino, *Bethesda*  
Julienne K Kirk, *North Carolina*  
Renu A Kowluru, *Michigan*  
Lewis H Kuller, *Pennsylvania*  
Blandine Laferrère, *New York*  
Sang Yeoup Lee, *Mayo Clinic*  
Cong-Jun Li, *Maryland*  
Shuo Lin, *Los Angeles*  
Dong-Min Liu, *Virginia*  
Zhen-Qi Liu, *Charlottesville*  
Jian-Xing Ma, *Oklahoma City*  
Xin-Laing Ma, *Pennsylvania*  
Kenneth Maiese, *Michigan*  
Sridhar Mani, *Bronx*  
Suresh Mathews, *Auburn*  
Lauraar McCabe, *East Lansing*  
Murielle Mimeault, *Nebraska*  
Reema Mody, *Grayslake*  
Mohammad R Movahed, *Tucson*  
Charles B Nemeroff, *Georgia*  
Steven Nissen, *Ohio*  
Wei-Hong Pan, *Baton Rouge*  
Inga Peter, *New York*  
Gretchen A Piatt, *Pennsylvania*  
Wei Qiao Qiu, *Massachusetts*  
Cristina Rabadán-Diehl, *Maryland*  
Rajendra S Raghov, *Memphis*  
Swapnil Rajpathak, *New York*  
Mohammed S Razzaque, *Boston*  
Beverly AS Reyes, *Pennsylvania*  
Juan M Saavedra, *Maryland*  
Vallabh O Shah, *Albuquerque*  
Carol Ann Shively, *North Carolina*  
Anders AF Sima, *Michigan*  
Rajan Singh, *Los Angeles*  
Rakesh K Srivastava, *Texas*  
Bangyan Stiles, *California*  
Yu-Xiang Sun, *Houston*  
Ya-Xiong Tao, *Alabama*  
John A Tayek, *Torrance*  
John Gaylord Teeter, *Connecticut*  
Carlos M Telleria, *South Dakota*  
Michael L Traub, *Staten Island*  
Guillermo E Umpierrez, *Georgia*  
Margrit Urbanek, *Illinois*  
Hong-Jun Wang, *Boston*  
Mark E Williams, *Massachusetts*  
Guangyu Wu, *Los Angeles*  
Zhong-Jian Xie, *San Francisco*  
Yisang Yoon, *New York*  
Yi-Hao Yu, *New York*  
Kevin CJ Yuen, *Portland*  
Cui-Lin Zhang, *Maryland*

**Venezuela**

Fuad Lechin, *Caracas*



**ORIGINAL ARTICLE**

- 142** Complications of continuous intraperitoneal insulin infusion with an implantable pump  
*van Dijk PR, Logtenberg SJJ, Groenier KH, Haveman JW, Kleefstra N, Bilo HJG*
- 149** HLA-DQB1\* alleles and genetic susceptibility to type 1 diabetes mellitus  
*Mosaad YM, Auf FA, Metwally SS, Elsharkawy AA, El-Hawary AK, Hassan RH, Tawhid ZE, El-Chennawi FA*

**CASE REPORT**

- 156** Hyperinsulinemia and insulin resistance in a patient with type 2 diabetes complicated with myelofibrosis  
*Hamasaki H, Mishima S, Yanai H*

## Contents

*World Journal of Diabetes*  
Volume 3 Number 8 August 15, 2012

**ACKNOWLEDGMENTS** I Acknowledgments to reviewers of *World Journal of Diabetes*

**APPENDIX** I Meetings  
I-V Instructions to authors

**ABOUT COVER** *World Journal of Diabetes* Editorial Board Member, Valerie Taylor, MD, PhD, FRCPC, Assistant Professor, Director of Bariatric Surgery Psychiatry Program, Psychiatry and Behavioral Neuroscience, McMaster University, 100 west 5th Street, Hamilton, Ontario, L8N 3K7, Canada

**AIM AND SCOPE** *World Journal of Diabetes* (*World J Diabetes*, *WJD*, online ISSN 1948-9358, DOI: 10.4239), is a monthly, open-access, peer-reviewed journal supported by an editorial board of 323 experts in diabetes mellitus research from 38 countries.  
The major task of *WJD* is to report rapidly the most recent results in basic and clinical research on diabetes including: metabolic syndrome, functions of  $\alpha$ ,  $\beta$ ,  $\delta$  and PP cells of the pancreatic islets, effect of insulin and insulin resistance, pancreatic islet transplantation, adipose cells and obesity, clinical trials, clinical diagnosis and treatment, rehabilitation, nursing and prevention. This covers epidemiology, etiology, immunology, pathology, genetics, genomics, proteomics, pharmacology, pharmacokinetics, pharmacogenetics, diagnosis and therapeutics. Reports on new techniques for treating diabetes.

**FLYLEAF** I-III Editorial Board

## EDITORS FOR THIS ISSUE

Responsible Assistant Editor: Yuan Zhou  
Responsible Electronic Editor: Xiao-Mei Zheng  
Proofing Editor-in-Chief: Lian-Sheng Ma

Responsible Science Editor: Xiu-Xia Song  
Proofing Editorial Office Director: Jin-Lei Wang

**NAME OF JOURNAL**  
*World Journal of Diabetes*

**ISSN**  
ISSN 1948-9358 (online)

**LAUNCH DATE**  
April 15, 2010

**FREQUENCY**  
Monthly

**EDITING**  
Editorial Board of *World Journal of Diabetes*  
Room 903, Building D, Ocean International Center,  
No. 62 Dongsihuan Zhonglu, Chaoyang District,  
Beijing 100025, China  
Telephone: +86-10-85381892  
Fax: +86-10-85381893  
E-mail: wjd@wjgnet.com  
http://www.wjgnet.com

**EDITOR-IN-CHIEF**  
**Donald W Bowden, PhD, Professor**, Center for  
Human Genomics, Wake Forest University School of

Medicine, Medical Center Blvd., Winston-Salem, NC  
27157, United States

**Lu Qi, MD, PhD, Assistant Professor**, Department  
of Nutrition, Harvard School of Public Health, 665  
Huntington Ave., Boston, MA 02115, United States

**EDITORIAL OFFICE**  
Jian-Xia Cheng, Director  
Jin-Lei Wang, Vice Director  
*World Journal of Diabetes*  
Room 903, Building D, Ocean International Center,  
No. 62 Dongsihuan Zhonglu, Chaoyang District,  
Beijing 100025, China  
Telephone: +86-10-85381892  
Fax: +86-10-85381893  
E-mail: wjd@wjgnet.com  
http://www.wjgnet.com

**PUBLISHER**  
Baishideng Publishing Group Co., Limited  
Room 1701, 17/F, Henan Building,  
No.90 Jaffe Road, Wanchai,  
Hong Kong, China  
Fax: +852-3115-8812  
Telephone: +852-58042046

E-mail: bpg@baishideng.com  
http://www.wjgnet.com

**PUBLICATION DATE**  
August 15, 2012

**COPYRIGHT**  
© 2012 Baishideng. Articles published by this Open-  
Access journal are distributed under the terms of  
the Creative Commons Attribution Non-commercial  
License, which permits use, distribution, and reproduc-  
tion in any medium, provided the original work is pro-  
perly cited, the use is non-commercial and is otherwise  
in compliance with the license.

**SPECIAL STATEMENT**  
All articles published in this journal represent the  
viewpoints of the authors except where indicated  
otherwise.

**INSTRUCTIONS TO AUTHORS**  
Full instructions are available online at [http://www.wjgnet.com/1948-9358/g\\_info\\_20100107165233.htm](http://www.wjgnet.com/1948-9358/g_info_20100107165233.htm)

**ONLINE SUBMISSION**  
<http://www.wjgnet.com/esps/>

## Complications of continuous intraperitoneal insulin infusion with an implantable pump

Peter R van Dijk, Susan JJ Logtenberg, Klaas H Groenier, Jan Willem Haveman, Nanno Kleefstra, Henk JG Bilo

Peter R van Dijk, Susan JJ Logtenberg, Klaas H Groenier, Nanno Kleefstra, Henk JG Bilo, Diabetes Centre, Isala Clinics, Dokter van Heesweg 2, 8000 GK Zwolle, The Netherlands

Susan JJ Logtenberg, Nanno Kleefstra, Henk JG Bilo, Department of Internal Medicine, University Medical Center Groningen, Hanzeplein 1, 9713 GZ Groningen, The Netherlands

Klaas H Groenier, Department of General Practice, University Medical Center Groningen, Hanzeplein 1, 9713 GZ Groningen, The Netherlands

Jan Willem Haveman, Department of Surgery, University Medical Center Groningen, Hanzeplein 1, 9713 GZ Groningen, The Netherlands

Nanno Kleefstra, Langerhans Medical Research Group, Dokter van Heesweg 2, 8025 BT Zwolle, The Netherlands

Henk JG Bilo, Isala Clinics, Department of Internal Medicine, Dokter Spanjaardweg 12, 8025 AB Zwolle, The Netherlands

**Author contributions:** van Dijk PR, Logtenberg SJJ, Haveman JW, Kleefstra N and Bilo HJG designed the research; van Dijk PR, Logtenberg SJJ and Haveman JW performed the research; Groenier KH contributed to statistical analysis; van Dijk PR, Logtenberg SJJ, Haveman JW, Kleefstra N and Bilo HJG wrote the paper.

**Correspondence to:** Peter R van Dijk, MD, Diabetes Center, Isala clinics, PO Box 10400, 8000 GK Zwolle, The Netherlands. [p.r.van.dijk@isala.nl](mailto:p.r.van.dijk@isala.nl)

Telephone: +31-38-4247942 Fax: +31-38-4247695

Received: May 23, 2012 Revised: July 30, 2012

Accepted: August 8, 2012

Published online: August 15, 2012

### Abstract

**AIM:** To monitor the course of continuous intraperitoneal insulin infusion (CIPII) and to gain more insight into possible complications.

**METHODS:** A retrospective, longitudinal observational cohort study in patients with type 1 diabetes mellitus (T1DM) was performed. Only patients with "brittle" T1DM who started CIPII between January 1, 2000 and June 1, 2011, and were treated in the only centre in

The Netherlands providing CIPII treatment (Isala clinics, Zwolle) were eligible for inclusion. Outcomes were defined as operation-free period (OFP), rate and type of complications. Subanalyses were made between patients starting CIPII from 2000 to 2007 and from 2007 onwards in order to study possible changes over time in complications and/or OFP. The OFP was calculated as the time from initial implantation to the date of first documented re-operation. If patients had not experienced an operation, their data were recorded at the date of last follow up or death. Kaplan-Meier curves were constructed to visualize the OFP. A (two-sided) *P* value of less than 0.05 was considered statistically significant.

**RESULTS:** Fifty-seven patients were treated with CIPII, although one patient was excluded from analyses because of self-induced complications. In the remaining 56 patients, 70 complications occurred during 283 patient years. Catheter occlusion (32.9%), pump dysfunction (17.1%), pain at the pump site (15.7%) and infections (10.0%) were the most frequent complications. This resulted in a median OFP of 4.5 years (95% confidence interval 4.1-4.8 years) without any difference between the time periods. Fifty re-operations were performed because of complications, one per 5.6 patient years, with a decrease in pump dysfunction (*P* = 0.04) and pump explantations (*P* = 0.02) after 2007. In total, 9 episodes of ketoacidosis occurred during follow up and there were 69 hospital re-admissions, with a median duration of 6 d. CIPII was ceased in five patients due to recurrent infections (*n* = 2), pain (*n* = 1), inadequate glycaemic control (*n* = 1) or by own choice (*n* = 1). No CIPII related mortality was reported.

**CONCLUSION:** The OFP has been stable over the last decade. No CIPII related mortality was reported. A significant decrease in pump dysfunction and explantation was seen after 2007 compared to the period 2000-2007. CIPII remains a safe treatment modality for specific patient groups.

© 2012 Baishideng. All rights reserved.

**Key words:** Diabetes mellitus type 1; Intraperitoneal insulin infusion; Insulin infusion systems; Complications; Surgery

**Peer reviewer:** Dr. Teresa DiLorenzo, PhD, Albert Einstein College of Medicine, 1300 Morris Park Ave, Bronx, NY 10461, United States

van Dijk PR, Logtenberg SJJ, Groenier KH, Haveman JW, Kleefstra N, Bilo HJG. Complications of continuous intraperitoneal insulin infusion with an implantable pump. *World J Diabetes* 2012; 3(8): 142-148 Available from: URL: <http://www.wjgnet.com/1948-9358/full/v3/i8/142.htm> DOI: <http://dx.doi.org/10.4239/wjd.v3.i8.142>

## INTRODUCTION

Continuous intraperitoneal insulin infusion (CIPII) with an implantable pump has been a treatment option for patients with diabetes since the 1980s. Nowadays this treatment modality is mainly used in patients with so called "brittle diabetes", i.e., failing to reach adequate glycaemic control despite intensive insulin therapy with multiple daily injections or continuous subcutaneous insulin infusion and/or having frequent hypoglycaemic episodes, or subcutaneous insulin resistance<sup>[1,2]</sup>.

Although the long term feasibility and positive metabolic benefits of CIPII are established by several clinical studies, reports on the drawbacks of CIPII are relatively scarce<sup>[3,4]</sup>. Obviously, complications interfere with treatment outcome with respect to glycaemic control, costs and, most importantly, quality of life<sup>[5,6]</sup>. Furthermore, while technical problems prevented widespread use of CIPII in the past, modifications of both the catheter attached to the pump and the insulin have reduced the incidence of insulin aggregates blocking the insulin delivery, one of the major problems in earlier years<sup>[7]</sup>.

Haveman *et al.*<sup>[8]</sup> underlined this development by studying the complications of CIPII in patients who started with CIPII before 2007 in our hospital (Isala Clinics, Zwolle, The Netherlands). After introduction of a new battery and a change in insulin solution in 2000, the operation-free period (OFP) was estimated to increase from 21 to 78 mo. The incidence of complications such as pump site infections and catheter related problems decreased, in accordance with other studies on CIPII<sup>[5,6]</sup>. However, ongoing monitoring is necessary to observe the course of this decrease. Furthermore, following the changes in 2000 more accurate results are required on what the OFP really is as only a limited number of patients had reached a 78 mo follow-up at the time of the previous evaluation (follow-up until 2007). Thus it is essential to extend our former study to include the period from 2007 onwards.

The aim of the current study was to describe the

complications of CIPII in patients with type 1 diabetes mellitus (T1DM) over the period from 2000 until 2011. We also studies in detail the origin and consequences of both pump- and/or catheter related problems and complications.

## MATERIALS AND METHODS

### Patients

In the Netherlands, the following indications for CIPII have been formulated: subcutaneous insulin resistance, brittle diabetes, hypoglycaemia unawareness, delayed insulin absorption, allergies, lipohypertrophy and/or lipodystrophy, very lean subjects, needle phobia, severe skin scarring or chronic dermatological problems<sup>[9]</sup>. Patients were selected for CIPII after consultation with diabetes professionals well acquainted with CIPII with, as a minimum, the participation of an internist and a diabetes specialist nurse in the decision making. Implantation was always combined with intensive education and, when indicated, assessment by a psychologist.

All patients with T1DM who were treated with CIPII over the period from January 1, 2000 to June 1, 2011 were included in the current analysis. All of these patients were referred to and treated in the Isala Clinics in Zwolle, the only centre in The Netherlands providing this treatment. For all patients, detailed clinical data regarding surgical placement of the pump, short- and long-term complications and consequences were collected retrospectively by reviewing hospital charts, operation- and microbiology reports. Data were collected by use of standardized case record forms.

### Procedures

Insulin pump, implantation and post-operative treatment and refill procedures have been described previously<sup>[8]</sup>. In Brief, MiniMed MIP model 2007 CIPII devices (Medtronic-MiniMed, Northridge, CA, United States) were implanted in our clinic from 2000 onwards. This model has a reservoir which can contains 15 mL of a special solution of U400 insulin and has a battery with 7 years longevity.

An outpatient rinse procedure with NaOH was performed every 9 mo or in cases of insulin underdelivery. Insulin underdelivery is present when, after the pump reservoir is totally emptied, the ratio between programmed and actually infused volume of programmed insulin, calculated as % error, is higher than 20%. If the % error was higher than 20, or a clinically significant difference between the % error calculated at previous refill was found, a rinse procedure was performed. In addition, inspection of the patient-pump-communicator for hardware or electronic failure was performed. If these procedures failed to restore normal insulin infusion a catheter flushing and/or catheter X-ray investigation was also performed. In case of signs of intractable occlusion despite all of these actions, surgical examination of the catheter to discover possible blockages with a post-surgical rinse of the pump was deemed necessary.



**Table 1** Baseline characteristics of patients starting continuous intraperitoneal insulin infusion *n* (%)

	All patients	Implantation date	
	2000-2011 ( <i>n</i> = 56)	2000-2007 ( <i>n</i> = 37)	2007-2011 ( <i>n</i> = 19)
Age (mean ± SD, yr)	37.6 ± 14.5	38.0 ± 14.4	36.6 ± 15.1
Female sex	38 (68)	28 (76)	10 (53)
Smokers	12 (21.4)	7 (18.9)	5 (26.3)
Previous abdominal operation	9 (16.1)	7 (18.9)	2 (10.5)
BMI (mean ± SD, kg/m <sup>2</sup> )	25.4 ± 4.4	26.3 ± 4.2	23.7 ± 4.3
Duration of diabetes (yr), median (IQR)	16.7 (9.7-26.3)	15.9 (9.8-26.8)	19.1 (9.6-26.3)
Retinopathy	13 (23.2)	9 (24.3)	4 (21.1)
Neuropathy	17 (30.4)	12 (32.4)	5 (26.3)
Nephropathy	4 (7.1)	3 (8.0)	1 (5.3)

BMI: Body mass index; IQR: Interquartile range.

### Complications

Pump-site infection was defined as a culture-proven infection in the subcutaneous pocket of the insulin pump. Prolonged device-related pain was defined as pain at the pump site which lasted for more than 6 wk after surgery and necessitated use of analgesics. Cutaneous erosion of the skin was defined as redness with signs of (imminent) perforation of the overlying skin at the pump site. Post-operative haematoma was defined as a swelling at the pump site caused by bleeding. Pump dislocation was defined as migration or rotation of the pump relative to the initial place of implantation. Catheter occlusion was defined as blockage of the catheter by fibrin clots or an intrinsic catheter defect. Encapsulation in the peritoneal cavity was defined as encapsulation of the catheter tip, positioned in the peritoneal cavity, by the omentum as diagnosed by catheter X-ray investigation or during surgical inspection. Hardware problems were defined as demonstrated hardware failure of the pump. Premature battery end-of-life was defined as battery end-of-life within 3.5 years of implantation. Pump dysfunction was defined as acute or chronic dysfunction of the pump after excluding of other causes e.g., battery end-of-life or hardware failure.

### Statistical analysis

All analyses were performed using SPSS version 18.0 (Inc., Chicago, IL, United States). Descriptive statistics include number (percentage), mean ± SD and median [interquartile range (IQR)]. Data were compared with the Fisher's exact test in the case of categorical data. In the case of continuous data, Student's *t*-test or Mann-Whitney *U* test were used if the data was distributed normally or skewed, respectively. Q-Q plots and histograms were used to determine if the tested variable had a normal distribution or not. The OFP was calculated as the time from initial implantation to the date of first documented re-operation. If patients had not experienced an operation, they data were recorded at the date of last follow up or time of death. Kaplan-Meier curves were constructed to visualize the OFP. In order to further analyze the course of the complications, subanalyses were made comparing patients starting CIPII from 2000 and 2007, the end of the previous study, and from 2007 onwards. Differences

in time to the occurrence of complications and the OFP rates were assessed for statistical significance using the log-rank test. A Cox regression analysis was performed to study the influence of possible confounders (age, sex, body mass index, duration of diabetes) on the OFP. A (two-sided) *P* value of less than 0.05 was considered statistically significant.

## RESULTS

### Patients and implantation procedures

A total of 57 patients with T1DM were treated with CIPII. One patient with self-induced complications was excluded from analysis; the remaining 56 patients are subject of this study. Patient characteristics are depicted in Table 1. Two hundred eighty three patient years of follow up were observed, with a median duration of 4.7 years. In total, 80 pumps were implanted; 20 (35.7%) patients had a second pump and 4 (7.1%) patients had a third pump implanted.

### Operation-free period

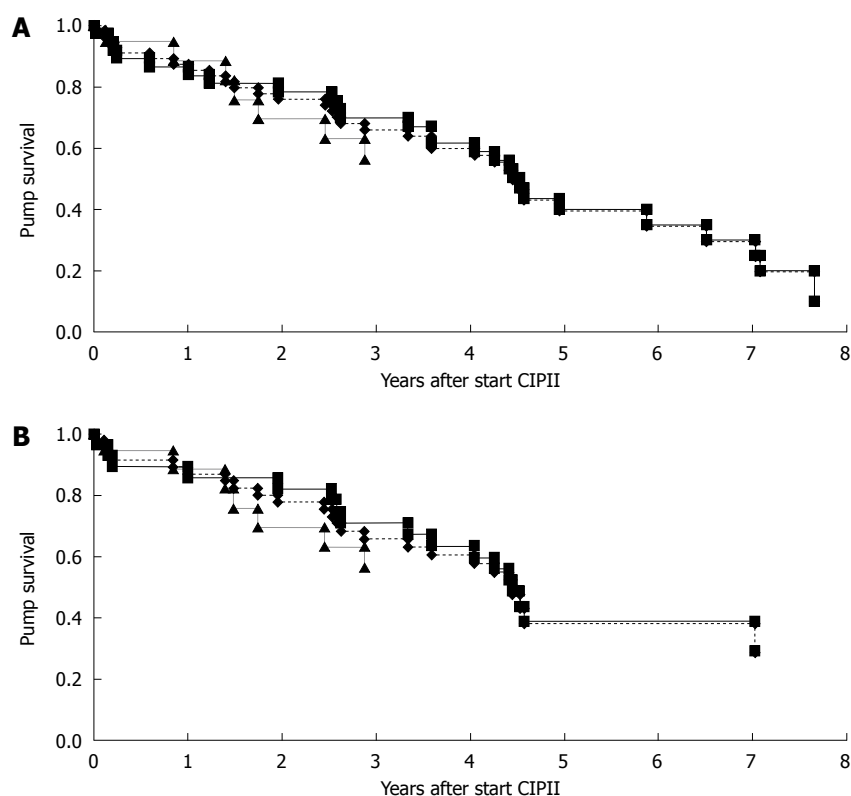
After starting CIPII, 33 patients underwent re-operation; 6 because of expected battery end-of-life, 24 because of complications and 3 for other reasons. As depicted in Figure 1, the median OFP between initial implantation and the first re-operation for all patients was 4.5 years [95% confidence interval (CI): 4.1-4.8 years]. After excluding operations for pump replacement for expected battery end-of-life or other reasons (*n* = 9) the median OFP was 4.5 years (95% CI: 3.9-5.0 years).

### Complications

A total of 70 complications occurred during the follow-up (Table 2). Catheter occlusion (32.9%), pump dysfunction (17.1%) and pain at the pump site (15.7%) were the most frequent complications. Fifty-seven complications occurred with the first implanted pump *in situ*, 11 with the second and 2 with the third. 21 patients did not experience any complication, 15 patients experienced 1 complication, 11 patients 2 complications, 7 patients 3 complications, 1 patient 4 complications, and 1 patient 8 complications. The latter patient had recurrent infections

**Table 2** Complications of continuous intraperitoneal insulin infusion during follow-up

	All patients		Implantation date			
	2000-2011 ( <i>n</i> = 56)		2000-2007 ( <i>n</i> = 37)		2007-2011 ( <i>n</i> = 19)	
	<i>n</i> (%)	Per 100 PY	<i>n</i> (%)	Per 100 PY	<i>n</i> (%)	Per 100 PY
Haematoma	3 (4.3)	1.1	2 (3.8)	0.9	1 (5.9)	1.8
Infection	7 (10.0)	2.5	4 (7.5)	1.8	3 (17.6)	5.3
Pain	11 (15.7)	3.9	8 (15.1)	3.5	3 (17.6)	5.3
Cutaneous erosion	2 (2.9)	0.7	2 (3.8)	0.9	0 (0.0)	0.0
Dislocation	3 (4.3)	1.1	2 (3.8)	0.9	1 (5.9)	1.8
Hardware failure	0 (0.0)	0.0	0 (0.0)	0.0	0 (0.0)	0.0
Premature battery end of life	0 (0.0)	0.0	0 (0.0)	0.0	0 (0.0)	0.0
Insulin aggregate	4 (5.7)	1.4	4 (7.5)	1.8	0 (0.0)	0.0
Catheter occlusion	23 (32.9)	8.1	16 (30.2)	7.1	7 (41.2)	12.3
Encapsulation of the catheter tip	3 (4.3)	1.1	3 (5.7)	1.3	0 (0.0)	0.0
Peritonitis	1 (1.4)	0.4	1 (1.9)	0.4	0 (0.0)	0.0
Pump dysfunction	12 (17.1)	4.2	11 <sup>1</sup> (20.8)	4.9	1 <sup>1</sup> (5.9)	1.8
Other	1 (1.4)	0.4	0 (0.0)	0.0	1 (5.9)	1.8
All	70 (100.0)	24.8	53 (100.0)	23.5	17 (100.0)	29.9

<sup>1</sup>*P* = 0.04. PY: Patient years.**Figure 1** Time between initial implantation and first re-operation, for all reasons (*n* = 56) (A) and only for complications (*n* = 47) (B). The dotted line represents all patients. The black line and grey line represent patients groups who started continuous intraperitoneal insulin infusion (CIPII) between 2000 and 2007 or between 2007 and 2011, respectively (log rank test for differences, A: *P* = 0.8; B: *P* = 0.72).

and peritonitis, after a catheter replacement procedure. The median time from implantation of the first pump to occurrence of the first complication (excluding battery end of life) was 3.6 years (95% CI: 2.2-5.0 years).

### Consequences of complications

Because of complications, 50 re-operations were performed: one per 5.6-year of follow up (Table 3). Ex-

plantation of the pump and catheter (34.0%, 6.0 per 100 patient years) and catheter replacement (26.0%, 4.6 per 100 patient years) were the most frequently performed re-operations. Nine episodes of ketoacidosis occurred during follow up, 8 due to pump dysfunction and 1 due to catheter occlusion. Sixty-nine hospital re-admissions were caused by complications. The median duration of admission was 6 d (IQR: 3.0-12.8 d).

**Table 3** Re-operations because of complications of continuous intraperitoneal insulin infusion during follow-up

	All patients		Implantation date			
	2000-2011 ( <i>n</i> = 56)		2000-2007 ( <i>n</i> = 37)		2007-2011 ( <i>n</i> = 19)	
	<i>n</i> (%)	Per 100 PY	<i>n</i> (%)	Per 100 PY	<i>n</i> (%)	Per 100 PY
Catheter inspection	2 (4.0)	0.7	2 (5.3)	0.9	0 (0.0)	0.0
Catheter replacement	13 (26.0)	4.6	8 (21.1)	3.5	5 (41.7)	8.8
Explantation of pump and catheter	17 (34.0)	6.0	15 <sup>1</sup> (39.5)	6.6	2 <sup>1</sup> (16.7)	3.5
Repositioning of pump	2 (4.0)	0.7	2 (5.3)	0.9	0 (0.0)	0.0
Fixation of pump	2 (4.0)	0.7	1 (2.6)	0.4	1 (8.3)	1.8
Cutaneous problem	0 (0.0)	0.0	0 (0.0)	0.0	0 (0.0)	0.0
Intra-abdominal problem	1 (2.0)	0.4	1 (2.6)	0.4	0 (0.0)	0.0
Remove clot at tip of catheter/flush catheter	7 (14.0)	2.5	4 (10.5)	1.8	3 (25.0)	5.3
Haematoma	1 (2.0)	0.4	1 (2.6)	0.4	0 (0.0)	0.0
Reposition of catheter	3 (6.0)	1.1	3 (7.9)	1.3	0 (0.0)	0.0
Infection	2 (4.0)	0.7	1 (2.6)	1.2	1 (8.3)	1.8
All	50 (100.0)	17.7	38 (100.0)	44.3	12 (100.0)	21.1

<sup>1</sup>*P* = 0.02. PY: Patient years.

### Course of complications

Between 2000 and 2007, 37 (median follow up 5.3 years) patients received a pump and 19 (median follow up 3.7 years) patients received a pump between 2007 and 2011. The clinical characteristics of patients in the two different timeframes were comparable. Median OFP period for patients initially implanted between 2000 and 2007 was 4.5 years (95% CI: 4.1-5.0 years). Only seven patients implanted after 2007 had a re-operation, therefore the median OFP could not be calculated. There were no significant differences in median OFP (log rank: *P* = 0.80) between the two timeframes, even when excluding operations for expected battery end-of-life and reasons other than complications (log rank: *P* = 0.72) (Figure 1A and B).

The number of pump dysfunctions among patients who started CIPII after 2007 was significantly lower than in the group of patients who started CIPII before 2007 (*P* = 0.04) (Table 2). As depicted in Table 3, from 2007 onwards there were significantly less re-operations for pump and catheter explantation following complications (*P* = 0.02). The Cox regression analysis showed a non-significant hazard ratio of 1.12 (95% CI: 0.46-2.75, *P* = 0.52) for patients implanted after 2007 compared to those who were implanted between 2000 and 2007. None of the confounders had a significant relation with time to first re-intervention.

### Mortality and cessation of CIPII therapy

During the follow up period, one patient died due to heart failure whilst being treated with CIPII. In 5 patients, CIPII was stopped and the pump removed. In two patients the pump was removed because of recurrent infections and in the other cases because of pain (*n* = 1), inadequate glycaemic control (*n* = 1) or by own choice (*n* = 1). The remaining 50 patients are still being treated with CIPII.

## DISCUSSION

The current study describes the incidence of complica-

tions in 56 patients treated with CIPII with an implanted insulin pump during the last decade. During 282.6 patient years of follow up, 70 complications occurred, i.e., one complication per 4.0 patient years. Catheter occlusion (32.9%), pump dysfunction (17.1%), pain (15.7%) and infections (10.0%) were the most frequent complications. A significant decrease in pump dysfunction and the need of premature explantation of the pump was seen in the period since 2007, compared to the period before 2007. There was a non-significant but potentially relevant increase in infections, catheter related complications and re-operations since 2007, although this did not affect the OFP during the last decade.

In the present study we report an OFP of 4.5 years (95% CI: 4.1-4.8 years) among patients who started CIPII between 2000 and 2007. This OFP differs from the OFP of 6.5 years (95% CI: 2.2-10.8 years) found by Haveman *et al*<sup>[8]</sup> among a subset of the same patients in the same period due to differences in follow up period. The current study had a longer follow up period for these patients and thus gives a more accurate estimate of the OFP.

The incidence of infections in the present study, 2.5 per 100 patient years, is comparable to previous studies on CIPII and other implanted devices<sup>[5,6,8,10-13]</sup>. Apparently, this rate has increased in patients operated on after 2007 to 5.3 infections per 100 patient years. However, all infections appeared in one patient. Due to combined improvements in pump technology, insulin stability and frequent rinse procedures, the previously high incidence of catheter blockage (between 7.8 and 57.3 per 100 patient years) has been substantially reduced<sup>[4,14-19]</sup>. In 2003, Gin *et al*<sup>[6]</sup> reported an incidence of 3.7 catheter obstructions needing surgical intervention, per 100 patient years. Although we found no difference in the course of treatment, compared to the limited recent literature on this topic, the incidence of catheter occlusions and re-operation for catheter replacement (14.5 respectively 8.8 per 100 patient years) since 2007 are rather high compared to the findings of Gin *et al*<sup>[6]</sup>.

Besides the number of re-operations, the impact of complications is illustrated by the number of ketoacidosis occurrences ( $n = 9$ ) and the hospital re-admissions (median duration of 6 d) following complications. DeVries *et al*<sup>[1]</sup> showed that initiation of CIPII diminishes the median duration hospital stay for patients with poorly regulated diabetes from 45 d in the year before implantation to 13 d in the year after implantation, the latter mostly due to implantation of the pump. As far as we know, the present study is the first to report on the number of hospital re-admissions due to complications. This number would strengthen future analysis of cost-effectiveness and health-related quality of life of CIPII.

This study has some limitations. First, since the follow up of the study performed by Haveman *et al*<sup>[8]</sup> ended at January 1, 2007 we decided to use this arbitrary point as cut-off for our subanalyses for the time course of the complications. Although this date is arbitrary and the numbers of patients are small, it can may give insight into changes in complications, positively and negatively, specific for a timeframe, that would need attention for the present care of these patients. Second, the exact cause of catheter or pump dysfunction could not always be determined and therefore the rate of factors such as insulin aggregates that may have led to pump dysfunction may be underestimated.

In conclusion, the median OFP for patients treated by CIPII with an implantable pump has been stable at 4.5 years over the last decade. Catheter occlusion (32.9%), pump dysfunction (17.1%), pain at the pump site (15.7%) and infections (10.0%) were the most frequent complications. There was a significant decrease in the number of pump dysfunctions and pump explantations and no significant alterations in the course of complications when comparing the period from 2000 until 2007 and that from 2007 onwards. However, the former group had a longer follow up period. This may mask a transition or possible future increase in complications and re-operations, thus suggesting a relatively stable OFP among patients. This will require ongoing investigation and thorough monitoring over the coming years.

Furthermore, since a new intraperitoneal insulin formulation had to be introduced in June 2011 since there are no batches of the original insulin formulation left, the findings of the present study should be taken into account when evaluating the effects associated with the use of the new insulin formulation. No CIPII related mortality was reported. CIPII remains a safe treatment modality for specific patient groups.

## COMMENTS

### Background

Intraperitoneal (IP) insulin infusion with an implantable insulin pump has been a treatment option for patients with diabetes since the 1980s. Nowadays this treatment is mainly used in patients who fail to reach adequate glycaemic control despite intensive insulin treatment with multiple daily injections or continuous subcutaneous insulin infusion. The aim of the current study was to monitor the course and to gain more insight into the surgical aspects and complications of continuous intraperitoneal insulin infusion (CIPII) using an implantable pump.

### Research frontiers

CIPII using an implantable pump improves glycaemic regulation in selected patients, compared to subcutaneous insulin infusion. In addition, if IP delivery could be linked to a kind of permanent sensor, and with a logarithm between this sensor and pump, a closed loop system could be created in the future. However, the complications and surgical experience with CIPII are important factors in the clinical use of CIPII.

### Innovations and breakthroughs

The median operation-free period (OFP) for patients treated by CIPII with an implantable pump has been stable at 4.5 years over the last decade. Catheter occlusion (32.9%), pump dysfunction (17.1%), pain at the pump site (15.7%) and infections (10.0%) were the most frequent complications. Fifty re-operations were performed due to complications, one per 5.6 patient years. No CIPII related mortality was reported. CIPII remains a safe treatment modality for specific patient groups.

### Applications

Knowledge of the complications of CIPII adds to patient counseling and clinical care. Since a new intraperitoneal insulin formulation had to be introduced in June 2011 as there were no batches of the original insulin formulation left, the findings of the present study should be taken into account when evaluating the effects associated with the use of the new insulin formulation.

### Terminology

Insulin delivered into the peritoneal space using an implantable pump. Insulin which is delivered into the peritoneal space is, to a large extent, absorbed directly (detectable within 1 h after administration) into the portal system, thereby mimicking the physiological route of insulin delivery from the pancreas. The time period between the initial operation and the first re-operation or, if patients have not experienced a re-operation, date of last follow up or death.

### Peer review

The manuscript by van Dijk *et al* reports on the complications of CIPII in type 1 diabetes. This study is an important addition to the literature, as it enumerates the complications of CIPII with a follow-up period of up to 12 years. In addition to providing data for the entire patient group, they also perform a subanalysis comparing patients starting CIPII between 2000-2007 and those starting from 2007 onward. The current study provides longer follow-up of the patients who began CIPII in 2000 or later. This is most relevant to current care, as a pump battery with a longer life was introduced in 2000, as was a change in the insulin formulation used in the pump.

## REFERENCES

- 1 DeVries JH, Eskes SA, Snoek FJ, Pouwer F, Van Ballegooie E, Spijker AJ, Kostense PJ, Seubert M, Heine RJ. Continuous intraperitoneal insulin infusion in patients with 'brittle' diabetes: favourable effects on glycaemic control and hospital stay. *Diabet Med* 2002; **19**: 496-501
- 2 Renard E, Schaepelynck-Bélicar P. Implantable insulin pumps. A position statement about their clinical use. *Diabetes Metab* 2007; **33**: 158-166
- 3 Logtenberg SJ, van Ballegooie E, Israël-Bultman H, van Linde A, Bilo HJ. Glycaemic control, health status and treatment satisfaction with continuous intraperitoneal insulin infusion. *Neth J Med* 2007; **65**: 65-70
- 4 Broussolle C, Jeandidier N, Hanaire-Broutin H. French multicentre experience of implantable insulin pumps. The EVADIAC Study Group. Evaluation of Active Implants in Diabetes Society. *Lancet* 1994; **343**: 514-515
- 5 Renard E, Bouteleau S, Jacques-Apostol D, Lauton D, Gibert-Boulet F, Costalat G, Bringer J, Jaffiol C. Insulin underdelivery from implanted pumps using peritoneal route. Determinant role of insulin pump compatibility. *Diabetes Care* 1996; **19**: 812-817
- 6 Gin H, Renard E, Melki V, Boivin S, Schaepelynck-Bélicar P, Guerci B, Selam JL, Brun JM, Riveline JP, Estour B, Catargi B. Combined improvements in implantable pump technology and insulin stability allow safe and effective long term intraperitoneal insulin delivery in type 1 diabetic patients: the EVADIAC experience. *Diabetes Metab* 2003; **29**: 602-607
- 7 Gin H, Melki V, Guerci B, Catargi B. Clinical evaluation of a



- newly designed compliant side port catheter for an insulin implantable pump: the EVADIAC experience. Evaluation dans le Diabète du Traitement par Implants Actifs. *Diabetes Care* 2001; **24**: 175
- 8 **Haveman JW**, Logtenberg SJ, Kleefstra N, Groenier KH, Bilo HJ, Blomme AM. Surgical aspects and complications of continuous intraperitoneal insulin infusion with an implantable pump. *Langenbecks Arch Surg* 2010; **395**: 65-71
- 9 Nederlandse Internisten Vereniging: Statement regarding indications for continuous intraperitoneal insulin infusion, 2007
- 10 **Bélicar P**, Lassmann-Vague V. Local adverse events associated with long-term treatment by implantable insulin pumps. The French EVADIAC Study Group experience. Evaluation dans le Diabète du Traitement par Implants Actifs. *Diabetes Care* 1998; **21**: 325-326
- 11 **Renard E**, Rostane T, Carrière C, Marchandin H, Jacques-Apostol D, Lauton D, Gibert-Boulet F, Bringer J. Implantable insulin pumps: infections most likely due to seeding from skin flora determine severe outcomes of pump-pocket seromas. *Diabetes Metab* 2001; **27**: 62-65
- 12 **Udelsman R**, Chen H, Loman K, Pitt HA, Saudek CD. Implanted programmable insulin pumps: one hundred fifty-three patient years of surgical experience. *Surgery* 1997; **122**: 1005-1011
- 13 **Darouiche RO**. Treatment of infections associated with surgical implants. *N Engl J Med* 2004; **350**: 1422-1429
- 14 One-year trial of a remote-controlled implantable insulin infusion system in type I diabetic patients. Point Study Group. *Lancet* 1988; **2**: 866-869
- 15 **Saudek CD**, Selam JL, Pitt HA, Waxman K, Rubio M, Jeandidier N, Turner D, Fischell RE, Charles MA. A preliminary trial of the programmable implantable medication system for insulin delivery. *N Engl J Med* 1989; **321**: 574-579
- 16 **Selam JL**, Micossi P, Dunn FL, Nathan DM. Clinical trial of programmable implantable insulin pump for type I diabetes. *Diabetes Care* 1992; **15**: 877-885
- 17 **Hanaire-Broutin H**, Broussolle C, Jeandidier N, Renard E, Guerci B, Haardt MJ, Lassmann-Vague V. Feasibility of intraperitoneal insulin therapy with programmable implantable pumps in IDDM. A multicenter study. The EVADIAC Study Group. Evaluation dans le Diabète du Traitement par Implants Actifs. *Diabetes Care* 1995; **18**: 388-392
- 18 **Scavini M**, Galli L, Reich S, Eaton RP, Charles MA, Dunn FL. Catheter survival during long-term insulin therapy with an implanted programmable pump. The Implantable Insulin Pump Trial Study Group. *Diabetes Care* 1997; **20**: 610-613
- 19 **Renard E**, Baldet P, Picot MC, Jacques-Apostol D, Lauton D, Costalat G, Bringer J, Jaffiol C. Catheter complications associated with implantable systems for peritoneal insulin delivery. An analysis of frequency, predisposing factors, and obstructing materials. *Diabetes Care* 1995; **18**: 300-306

**S- Editor** Wu X **L- Editor** Hughes D **E- Editor** Zheng XM

## HLA-DQB1\* alleles and genetic susceptibility to type 1 diabetes mellitus

Youssef M Mosaad, Fatma A Auf, Shereen S Metwally, Ashraf A Elsharkawy, Amany K El-Hawary, Rasha H Hassan, Ziyad E Tawhid, Farha A El-Chennawi

Youssef M Mosaad, Fatma A Auf, Shereen S Metwally, Ziyad E Tawhid, Farha A El-Chennawi, Unit of Clinical Immunology, Department of Clinical Pathology, Mansoura Faculty of Medicine, Mansoura 35111, Egypt

Ashraf A Elsharkawy, Amany K El-Hawary, Unit of Pediatric Endocrinology and Diabetes, Mansoura Faculty of Medicine, Children's Hospital, Mansoura 35111, Egypt

Rasha H Hassan, Unit of Pediatric Infectious Disease and Malnutrition, Mansoura Faculty of Medicine, Children's Hospital, Mansoura, 35111, Egypt

**Author contributions:** Mosaad YM, Elsharkawy AA and Tawhid ZE contributed equally to this work; Auf FA, Metwally SS and El-Chennawi FA designed the research; Mosaad YM and Tawhid ZE performed the research; all members contributed new reagents/analytic tools; Elsharkawy AA, El-Hawary AK and Hassan RH provided the clinical samples, data, and follow-up of patients; Mosaad YM, Elsharkawy AA, El-Hawary AK and Hassan RH wrote the paper.

**Correspondence to:** Youssef M Mosaad, Professor, Unit of Clinical Immunology, Department of Clinical Pathology, Mansoura Faculty of Medicine, Mansoura University, Mansoura 35111, Egypt. [youssefmosaad@yahoo.com](mailto:youssefmosaad@yahoo.com)

Telephone: +20-50-2247042 Fax: +20-50-2267563

Received: March 19, 2012 Revised: June 27, 2012

Accepted: August 8, 2012

Published online: August 12, 2012

### Abstract

**AIM:** To determine human leukocyte antigen (HLA)-DQB1 allele association with susceptibility to type 1 diabetes (T1D) and to clinical and laboratory findings.

**METHODS:** This study was conducted on 85 unrelated Egyptian children with T1D recruited consecutively from the Pediatric Diabetes Endocrinology outpatients Clinic; Mansoura University Children's Hospital, Egypt. Patient mean follow up period was 2.5 years. Patients were subdivided according to level of HbA1c (optimal/suboptimal control < 8.5% and poor control ≥ 8.5%). The

control group consisted of 113 unrelated age- and sex-matched healthy subjects without T1D or other autoimmune diseases. Genomic DNA extraction was done for all subjects using a DNA isolation kit. HLA-Class II-DQB1 allele typing was carried out with a polymerase chain reaction-sequence-specific oligonucleotide probe using a INNO-LiPA HLA-DQB1 update kit.

**RESULTS:** Significant differences were detected between Egyptian patients with T1D and control groups in the frequencies of DQB1\*02 [44.4% vs 18.6%, corrected  $P$  value ( $P_c$ ) < 0.001] and DQB1\*03 (41.2% vs 24.4%,  $P_c$  < 0.001). Significant differences were also observed between control groups and T1D patients in the frequencies of DQB1\*05 (14.6% vs 7.2%,  $P$  = 0.029) and DQB1\*06 (34.1% vs 7.2%,  $P$  < 0.001). However, after correction for multiple comparisons, the significance was retained for HLA-DQB1\*06 ( $P_c$  < 0.001) but lost for HLA-DQB1\*05. HLA-DQB1\*0201, \*0202, \*030201 were positively associated with T1D ( $P_c$  = 0.014,  $P_c$  < 0.001, and  $P_c$  < 0.001 respectively), while HLA-DQB1\*060101 was negatively associated ( $P_c$  < 0.001) with the condition. Although the HLA-DQB1 alleles 030101 and 050101 were significantly higher in controls ( $P$  = 0.016,  $P$  = 0.025 respectively), both of them lost statistical significance after correction of  $P$  value. The frequency of the HLA-DQB1 genotypes 02/02, 02/03, and 03/03 was higher in T1D patients, and the frequency of the genotypes 03/06, 05/06, and 06/06 was higher in controls, these differences being statistically significant before correction. After correction, the genotypes 02/02, 02/03 in T1D, and the genotypes 03/06, 06/06 in controls were still significant ( $P_c$  = 0.01,  $P_c$  < 0.001,  $P_c$  < 0.001, and  $P_c$  = 0.04, respectively). Non-significant associations were found between the frequency HLA-DQB1 alleles and genotypes in T1D in relation to the grade of diabetic control, Microalbuminuria, age, gender, age of presentation, weight, height, frequency of diabetic ketoacidosis ( $P$  =

0.42), serum cholesterol, and fasting and post-prandial level of C-peptide ( $P = 0.83$ ,  $P = 0.9$ , respectively).

**CONCLUSION:** The Current work suggests that HLA-DQB1 alleles \*030201, \*0202, \*0201, and genotypes 02/03, 02/02 may be susceptibility risk factors for development of T1D in Egyptian children, while the HLA-DQB1\*060101 allele, and 03/06, 06/06 genotypes may be protective factors. HLA-DQB1 alleles and genotypes do not contribute to microalbuminuria or grade of diabetic control.

© 2012 Baishideng. All rights reserved.

**Key words:** HLA-DQB1; Type 1 diabetes; Egyptian; Genetic susceptibility; Children, Complication

**Peer reviewer:** Eiji Kawasaki, Associate Professor, Department of Metab/Diabetes and Clin Nutr, Nagasaki University Hospital, 1-7-1 Sakamoto, 852-8501 Nagasaki, Japan

Mosaad YM, Auf FA, Metwally SS, Elsharkawy AA, El-Hawary AK, Hassan RH, Tawhid ZE, El-Chennawi FA. HLA-DQB1\* alleles and genetic susceptibility to type 1 diabetes mellitus. *World J Diabetes* 2012; 3(8): 149-155 Available from: URL: <http://www.wjgnet.com/1948-9358/full/v3/i8/149.htm> DOI: <http://dx.doi.org/10.4239/wjd.v3.i8.149>

## INTRODUCTION

Type 1 diabetes (T1D) mellitus is an organ-specific autoimmune disease characterized by T-cell-mediated destruction of pancreatic islets<sup>[1,2]</sup>. Both genetic and environmental factors are involved in the pathogenesis of the autoimmune process leading to the onset of this disease<sup>[3-6]</sup>.

Both genome screens and studies searching candidate genes have confirmed that T1D is a heterogeneous polygenic disorder, with about 20 loci contributing to the susceptibility to disease<sup>[7-9]</sup>. It is believed that the most important genes, responsible for more than of 50% genetic risk of developing diabetes, are located in human leukocyte antigen (HLA) region on chromosome 6<sup>[10]</sup>.

Although HLA class I may significantly influence the overall risk for diabetes<sup>[10]</sup>, the HLA class II loci DQA1, DQB1, and DRB1 contribute most to the genetic predisposition to T1D<sup>[11-14]</sup>. Their analysis remains the cornerstone of genetic risk stratification in the framework of diabetes prevention studies in risk groups such as family members of patients<sup>[15]</sup> or in the general population<sup>[16]</sup>.

Furthermore, the existence of regional differences in the prevalence and nature of diabetes-related HLA haplo- and genotypes as a function of the incidence of the disease within Europe and other regions<sup>[17-20]</sup>, necessitates the collection of HLA genotype data in the perspective of prediction and prevention studies at the regional or national level<sup>[21]</sup>.

The most relevant non-HLA genes identified as sus-

ceptible for T1D are those connected with the T-cell-mediated immune response. The activity level of T-cells and their effector functions are determined by intracellular signaling pathways and related genes. These include PTPN22 and CTLA-4, both of which prevent spontaneous activation of auto-reactive cells and development of autoimmunity<sup>[22,23]</sup>. In Egyptian children, the CTLA-4 +49 GG homozygous genotype is especially associated with T1D in younger patients and with younger age of onset, while the AG heterozygote genotype is associated with moderate or poor control of T1D<sup>[24]</sup>.

This study set out to determine HLA-DQB1 allele association with susceptibility and/or protection to T1D and with clinical and laboratory findings in a cohort of Egyptian children.

## MATERIALS AND METHODS

### Patients and healthy controls

T1D mellitus is an organ-specific autoimmune disease characterized by T-cell-mediated destruction of pancreatic islets<sup>[1,2]</sup>. This study was conducted on 85 unrelated Egyptian children with T1D recruited consecutively from the Pediatric Diabetes Endocrinology outpatients Clinic; Mansoura University Children's Hospital, Egypt. Studied patients were 35 males and 50 females. Patient mean age range was  $12.52 \pm 2.98$  years (range 3.5-16 years) with mean age of presentation  $8.5 \pm 3.1$  years. Patient mean follow up period was 2.5 years (range 1-6 years). Patients were subdivided according to level of HbA1c (optimal/suboptimal control  $< 8.5\%$  and poor control  $\geq 8.5\%$ )<sup>[25,26]</sup>.

All patients were treated by basal-bolus insulin regimen (3 rapid acting human insulin does as a bolus dose before the main meals and one intermediate acting human insulin does at bed time). Serum cholesterol measurement was carried out for all patients after overnight fast for 8-12 h. Patients were diagnosed with microalbuminuria if two of three consecutive urine samples showed elevated albumin excretion<sup>[27]</sup>.

The control group consisted of 113 unrelated age- and sex-matched healthy subjects without T1D or other autoimmune diseases such as autoimmune thyroid disease, living in the same geographical area and with the same ethnic origin as patients. Written informed consent was obtained from the parents of patients and controls after approval of the study protocol by the local ethical committee.

### HLA class II-DQB1 allele typing

Genomic DNA extraction was done for all samples using a DNA isolation kit (QIAmp DNA blood mini kit Cat. 51104, Qaigene, Gmbh). HLA-Class II-DQB1 allele typing was done carried out with a polymerase chain reaction-sequence-specific oligonucleotide probe using a INNO-LiPA HLA-DQB1 update kit (Lot number 152003, Innogenetics, Belgium). Test conditions were according to manufacturer's instruction.

### Statistical analysis

To compare the frequency of HLA-DQB1 alleles in children with T1D and controls, the conventional  $\chi^2$  test with Yates' correction for continuity, when appropriate, was used. SPSS version 17 was used for statistical analysis. The odds ratio (OR) was calculated with  $2 \times 2$  contingency tables. The 95% confidence intervals were obtained using Cornfield's approximation. Data was analyzed by one-way ANOVA for multiple comparisons. The *P* value was corrected (*P<sub>c</sub>*) for the number of alleles tested. The level of significance was set at 95%. *P* value less than 0.05 was considered significant.

## RESULTS

The average weight and height of studied patients were  $44.55 \pm 14.51$  kg and  $144.6 \pm 15.55$  cm respectively. Microalbuminuria was found in only 5 patients. The average serum cholesterol level was  $163.95 \pm 28.1$ , and the HbA1c average level was  $7.98 \pm 1.59$ . Optimal/suboptimal control of HbA1c level was found in 57 patients, and poor control in 28 patients (Table 1).

Significant differences were detected between Egyptian patients with T1D and control groups in the frequencies of DQB1\*02 (44.4% *vs* 18.6%, *P<sub>c</sub>* < 0.001, OR: 3.5) and DQB1\*03 (41.2% *vs* 24.4%, *P<sub>c</sub>* < 0.001, OR: 2.17). Significant differences were also observed between control groups and T1D patients in the frequencies of DQB1\*05 (14.6% *vs* 7.2%, *P* = 0.029, OR: 0.45) and DQB1\*06 (34.1% *vs* 7.2%, *P* < 0.001, OR: 0.15). However, after correction for multiple comparisons, the significance was retained for HLA-DQB1\*06 (*P<sub>c</sub>* < 0.001) but lost for HLA-DQB1\*05.

From analysis of the frequency of allele subtypes in T1D patients and controls, HLA-DQB1\*0201, \*0202, \*030201 were found to be positively associated with T1D (*P<sub>c</sub>* = 0.014, *P<sub>c</sub>* < 0.001, and *P<sub>c</sub>* < 0.001 respectively), while HLA-DQB1\*060101 was negatively associated (*P<sub>c</sub>* < 0.001). Although the HLA-DQB1 alleles 030101 and 050101 were significantly higher in controls (*P* = 0.016, *P* = 0.025 respectively), both of them lost statistical significance after correction of *P* value (Table 2).

From analysis of HLA-DQB1 genotypes in T1D patients and controls, the frequency of the genotypes 02/02, 02/03, and 03/03 was found to be higher in T1D patients, and the frequency of the genotypes 03/06, 05/06, and 06/06 was higher in controls, with these differences being statistically significant before correction. After correction, the genotypes 02/02, 02/03 in T1D, and the genotypes 03/06, 06/06 in controls still showed significant differences (*P<sub>c</sub>* = 0.01, *P<sub>c</sub>* < 0.001, *P<sub>c</sub>* < 0.001, and *P<sub>c</sub>* = 0.04, respectively) (Table 3).

In the analysis of the frequency HLA-DQB1 alleles and genotypes in T1D in relation to grade of diabetic control (Table 4), Microalbuminuria, age, gender, age of presentation, weight, height, frequency of diabetic ketoacidosis (*P* = 0.42), serum cholesterol, and level of fasting and post-prandial C-peptide (*P* = 0.83, *P* = 0.9, re-

**Table 1 Clinical and laboratory characteristics of type 1 diabetes mellitus patients**

Characteristic	n (%)
Age (mean $\pm$ SD, yr)	12.52 $\pm$ 2.99
Age of presentation (mean $\pm$ SD, yr)	8.5 $\pm$ 3.1
Gender: mean/female	35 (41.2)/50 (58.8)
Weight (kg)	44.55 $\pm$ 14.51
Height (cm)	144.6 $\pm$ 15.55
Microalbuminuria	
No	80 (94.1)
Yes	5 (5.9)
Frequency of DKA	1.22 $\pm$ 0.91
C-peptide (fasting)	0.34 $\pm$ 0.28
C-peptide (post-prandial)	0.58 $\pm$ 0.64
Serum cholesterol	163.95 $\pm$ 28.1
HbA1c	7.98 $\pm$ 1.59
Grades of HbA1c control <sup>1</sup>	
Optimal/suboptimal	57 (67.1)
Poor	28 (32.9)

<sup>1</sup>Optimal/suboptimal control < 8.5, poor control  $\geq$  8.5. DKA: Diabetic ketoacidosis.

spectively), only non-significant associations were found (data not shown).

## DISCUSSION

T1D mellitus is a chronic disease which most frequently presents in childhood<sup>[28,29]</sup>. It is classified into type 1B (idiopathic) and 1A diabetes mellitus, mediated through the immune system<sup>[30,31]</sup>. In T1D 1A, a genetically susceptible individual presents with loss of tolerance to the pancreatic islet tissue triggered by environmental factors<sup>[32]</sup> and develops a progressive, immune-mediated destruction of pancreatic islet  $\beta$  cell<sup>[31,33]</sup>.

T1D is considered a multifactorial condition with complex interactions between genetic and environmental factors<sup>[29,31]</sup>. There is evidence showing that 40%-50% of the inherited susceptibility to the disease is contributed by HLA-DR-DQ<sup>[30]</sup>. The association of specific HLA-DQB1 alleles and genotypes with T1D susceptibility/protection depends on the ethnicity and racial background of each population. For example, in Caucasians T1D is positively associated with DQB1\*0201 and DQB1\*0302, while in Japanese it is associated with DQB1\*0401 and DQB1\*0303.

From the results of the current study, significant positive associations were found with HLA-DQB1\*02 and DQB1\*03 (*P<sub>c</sub>* < 0.001, OR = 3.5, OR = 2.17 respectively) and a negative association with DQB1\*06 (*P* < 0.001, OR: 0.15) in Egyptian children with T1D. At the same time, HLA-DQB1\*0201, \*0202, \*030201 were positively associated (*P<sub>c</sub>* = 0.014, *P<sub>c</sub>* < 0.001, and *P<sub>c</sub>* < 0.001 respectively), and HLA-DQB1\*060101 was negatively associated (*P<sub>c</sub>* < 0.001) with T1D. The strongest positive association was found for HLA-DQB1\*030201, followed by \*0202, and finally \*0201 (OR = 19.2, OR = 14.4, and OR = 2.21, respectively). To the best of our knowledge, the present study is the first to identify a positive association between



**Table 2 HLA-DQB1 allele frequency in type-1 diabetes mellitus group *vs* control group *n* (%)**

HLA-DQB1 allele	Patient ( <i>n</i> = 85)	Control ( <i>n</i> = 113)	OR	95% CI	<i>P</i> value	<i>P<sub>c</sub></i> value
02	68 (44.4)	38 (18.6)	3.5	2.19-5.65	< 0.001	< 0.001
0201	49 (32.0)	36 (17.6)	2.21	1.35-3.62	0.001	0.014
0202	19 (12.4)	2 (1.0)	14.4	3.3-62.8	< 0.001	< 0.001
03	63 (41.2)	50 (24.4)	2.17	1.38-3.41	< 0.001	< 0.001
030101	4 (2.6)	18 (8.8)	0.279	0.09-0.84	0.016	NS
030201	56 (36.6)	6 (2.9)	19.2	7.9-45.9	< 0.001	< 0.001
04	0	17 (8.3)	-	-	-	-
05	11 (7.2)	30 (14.6)	0.45	0.22-0.93	0.029	NS
050101	6 (3.9)	21 (10.2)	0.35	0.14-0.91	0.025	NS
050201	6 (3.3)	1 (0.5)	6.9	0.79-59.6	0.043	NS
06	11 (7.2)	70 (34.1)	0.15	0.07-0.29	< 0.001	< 0.001
060101	2 (1.3)	51 (24.9)	0.04	0.01-0.17	< 0.001	< 0.001
0603	4 (2.6)	-	2.37	2.1-2.7	0.020	NS
060401	4 (2.6)	1 (0.5)	5.48	0.6-49.5	0.090	NS

HLA: Human leukocyte antigen; OR: Odds ratio; NS: Not significant; *P<sub>c</sub>* value: *P* value corrected for 14 comparisons. Significant *P* value if  $\leq 0.05$ .

**Table 3 HLA-DQB1 genotype<sup>1</sup> frequency in type 1 diabetes mellitus group *vs* control *n* (%)**

HLA-DQB1 genotype	Patient ( <i>n</i> = 85)	Control ( <i>n</i> = 113)	OR	95% CI	<i>P</i> value	<i>P<sub>c</sub></i> value
02/02	14 (16.5)	3 (2.7)	7.23	2.01-26.1	0.001	0.01
02/03	38 (44.7)	8 (7.1)	10.61	4.56-24.5	< 0.001	< 0.001
02/04	-	7 (6.3)	1.01	1.02-1.18	0.01	NS
02/05	6 (7.1)	4 (3.5)	2.07	0.56-7.57	0.26	NS
02/06	6 (7.1)	16 (14.2)	0.46	0.17-1.23	0.16	NS
03/03	12 (14.1)	6 (5.3)	2.93	1.05-8.16	0.033	NS
03/05	4 (4.7)	8 (7.1)	0.65	0.19-2.23	0.48	NS
03/06	2 (2.4)	22 (19.5)	0.1	0.02-0.44	< 0.00	< 0.001
05/06	1 (1.2)	11 (9.7)	0.11	0.01-0.87	0.012	NS
06/06	2 (2.4)	16 (14.2)	0.15	0.03-0.65	0.004	0.04

<sup>1</sup>Genotypes with frequency more than 5%. HLA: Human leukocyte antigen; OR: Odds ratio; NS: Not significant; *P<sub>c</sub>* value: *P* value corrected for 10 comparisons. Significant *P* value if  $\leq 0.05$ .

**Table 4 HLA-DQB1 genotype<sup>1</sup> frequency in relation to grades of diabetic control *n* (%)**

HLA-DQB1 genotype	Optimal control ( <i>n</i> = 57)	Poor control ( <i>n</i> = 28)	OR (95% CI)	<i>P</i> value
02/02	10 (65.9)	4 (60.5)	1.277 (0.36-4.49)	0.703
02/03	26 (34.1)	12 (39.5)	1.19 (0.45-2.78)	0.810
02/05	4 (39.4)	2 (28.9)	0.981 (0.18-5.71)	0.983
02/06	5 (53.0)	1 (63.2)	2.59 (0.29-23.35)	0.379
03/03	7 (7.6)	5 (7.9)	0.644 (0.19-2.25)	0.488
03/05	3	1	1.5 (0.15-15.11)	0.729
06/06	1	1	0.482 (0.03-8.01)	0.603

<sup>1</sup>Genotypes with frequency more than 5%. HLA: Human leukocyte antigen; OR: Odds ratio. Significant *P* value if  $\leq 0.05$ , Optimal/suboptimal control < 8.5, poor control  $\geq 8.5$ .

HLA-DQB1\*0202 and T1D (Table 2).

DQB1\*0201 and DQB1\*0302 were positively associated with T1D in various ethnic populations including Asians<sup>[34,35]</sup>, European<sup>[36-43]</sup>, and Americans<sup>[44-46]</sup>. Similar results were reported for Arab patients from Saudi Arabia<sup>[47,48]</sup>, Kuwait<sup>[49]</sup>, Tunisia<sup>[50]</sup>, Lebanon<sup>[51]</sup>, and Israeli<sup>[52]</sup>. On the other hand, DQB1\*0301 and DQB1\*0601 were negatively associated with T1D in Korean<sup>[34]</sup>, Latin American<sup>[46]</sup>, Lebanese<sup>[51]</sup>, Tunisian<sup>[50]</sup>, Saudi children<sup>[47,48]</sup>, Turkey<sup>[43]</sup>, and Romanian<sup>[37]</sup> populations.

In the literature, there is only one previous study in-

vestigating the association of HLA-DQB1 alleles with T1D in Egyptians. Gaber *et al.*<sup>[53]</sup> reported that HLA-DQB1\*0201/\*0302 were risk factors and \*0601/\*0603 were protective alleles. The two studies agree in relation to \*0201, \*0302, and \*0601, but differ regarding \*0603 in Gaber *et al.*<sup>[53]</sup>, and \*0202 in the present work. HLA-DQB1\*0603 was not detected in the controls of the present work. However, the present work was done on a different number of samples (85 patients *vs* 50 patients and 113 controls *vs* 50 controls) and a different geographical area (Delta region *vs* Cairo) from Gaber *et al.*<sup>[53]</sup>.

Egyptian are known to be of mixed ethnic origin (Middle Eastern, African and European)<sup>[54]</sup>, so Egyptian studies are expected to add to the data available for different ethnic background<sup>[55]</sup>. To the best of our knowledge, the present study is the first one to mention the positive association between HLA-DQB1\*0202 and T1D (Table 2).

These same HLA-DQ molecules are associated with diabetes risk in various Caucasian and black populations although their relative frequency in background populations varies. This is also reflected in genotypes found among T1D patients and comparison of high risk genotype frequencies is most relevant to disease susceptibility<sup>[56]</sup>. In Egyptian children with T1D, the genotypes 02/02, 02/03 were positively associated and the genotypes 03/06, 06/06 were negatively associated with the disease ( $P_c = 0.01$ ,  $P_c < 0.001$ ,  $P_c < 0.001$ , and  $P_c = 0.04$ , respectively) with the highest risk being with the heterozygote DQB1\*02/\*03 genotype (OR = 10.6) (Table 3). Similar findings were reported in the United States<sup>[44]</sup>, Hungary<sup>[38]</sup>, Romania<sup>[37]</sup>, and Saudi Arabia<sup>[47,48]</sup>.

The inheritance of HLA genes associated with T1DM would involve the presentation of diabetic auto-antigen to autoreactive T-cells, thereby launching a T-cell activation cascade and the subsequent destruction of pancreatic  $\beta$  islet cells<sup>[57]</sup>. It is tempting, therefore, to speculate that the DQB1\*0201, DQB1\*0302 genotypes and the homozygote DQB1\*0201 genotype predispose to the stimulation of auto-reactive T-cells, thereby precipitating  $\beta$ -cell-directed immunity. Individuals carrying DQB1\*0301, DQB1\*0602 or DQB1\*0602 may have a reduced affinity for diabetic autoantigen peptides, thereby explaining the dominant, protective nature of these peptides<sup>[58]</sup>.

Geo-epidemiological studies have highlighted that there is considerable geographic and ethnic variability not only in the incidence of T1D and its genetic determinants, but also in the acute and long-term complications and the resulting mortality risk associated with the disease. Comparisons of the genetic determinants of T1D in various populations have provided some evidence that the worldwide variation in incidence is at least partially determined by differences in genetic risk factors<sup>[52]</sup>. Our results showed no correlation between HLA-DQB1 and diabetic nephropathy as the number of patients with microalbuminuria was considered as a limiting factor. Rønningen *et al*<sup>[59]</sup> also found no association between HLA class II alleles and microalbuminuria. No significant association was found between HLA-DQB1 and the degree of diabetic control. Further investigation of this issue in a large groups of diabetic patients of matched age, sex, diet and lifestyle is needed.

The Current work suggests that HLA-DQB1 alleles \*030201, \*0202, \*0201, and genotypes 02/03, 02/02 may be a susceptibility risk factors for development of T1D in Egyptian children, and HLA-DQB1\*060101 allele, 03/06, 06/06 genotypes may be protective factors. HLA-DQB1 alleles and genotypes do not contribute to the grade of diabetic control.

## COMMENTS

### Background

The existence of regional differences in the prevalence and nature of diabetes-related human leukocyte antigen (HLA) haplo- and genotypes as a function of the incidence of the disease within Europe and other regions, necessitates the collection of HLA genotype data from the perspective of prediction and prevention studies at the regional or national level.

### Research frontiers

A significant positive associations were found with HLA-DQB1\*02 and DQB1\*03 and a negative association with DQB1\*06. HLA-DQB1\*0201, \*0202, \*030201 were positively associated, and HLA-DQB1\*060101 was negatively associated with type 1 diabetes (T1D).

### Innovations and breakthroughs

The strongest positive association was found for HLA-DQB1\*030201, followed by \*0202, and finally \*0201. The present study may be the first to mention the positive association between HLA-DQB1\*0202 and T1D.

### Applications

No significant association was found between HLA-DQB1 and the degree of diabetic control. Further investigation of this issue in a large groups of diabetic patients of matched age, sex, diet and lifestyle is needed.

### Peer review

The authors examined HLA-DQB1 allele association with susceptibility to T1D in a cohort of Egyptian children. They concluded that HLA-DQB1 alleles \*030201, \*0202, \*0201, and genotypes 02/03, 02/02 may be susceptibility risk factors for development of T1D, and HLA-DQB1\*060101 allele, 03/06, 06/06 genotypes may be protective factors. HLA-DQB1 alleles and genotypes do not contribute to the grade of diabetic control.

## REFERENCES

- 1 Anjos S, Polychronakos C. Mechanisms of genetic susceptibility to type I diabetes: beyond HLA. *Mol Genet Metab* 2004; **81**: 187-195
- 2 Pugliese A, Eisenbarth GS. Type 1 diabetes mellitus of man: genetic susceptibility and resistance. *Adv Exp Med Biol* 2004; **552**: 170-203
- 3 Bach JF. Infections and autoimmune diseases. *J Autoimmun* 2005; **25** Suppl: 74-80
- 4 Gale EA. The rise of childhood type 1 diabetes in the 20th century. *Diabetes* 2002; **51**: 3353-3361
- 5 Hyöty H. Enterovirus infections and type 1 diabetes. *Ann Med* 2002; **34**: 138-147
- 6 Myers MA, Hettiarachchi KD, Ludeman JP, Wilson AJ, Wilson CR, Zimmet PZ. Dietary microbial toxins and type 1 diabetes. *Ann N Y Acad Sci* 2003; **1005**: 418-422
- 7 Risch N. Assessing the role of HLA-linked and unlinked determinants of disease. *Am J Hum Genet* 1987; **40**: 1-14
- 8 Field LL. Genetic linkage and association studies of Type I diabetes: challenges and rewards. *Diabetologia* 2002; **45**: 21-35
- 9 Davies JL, Kawaguchi Y, Bennett ST, Copeman JB, Cordell HJ, Pritchard LE, Reed PW, Gough SC, Jenkins SC, Palmer SM. A genome-wide search for human type 1 diabetes susceptibility genes. *Nature* 1994; **371**: 130-136
- 10 Demaine AG, Hibberd ML, Mangles D, Millward BA. A new marker in the HLA class I region is associated with the age at onset of IDDM. *Diabetologia* 1995; **38**: 623-628
- 11 Khalil I, d'Auriol L, Gobet M, Morin L, Lepage V, Deschamps I, Park MS, Degos L, Galibert F, Hors J. A combination of HLA-DQ beta Asp57-negative and HLA DQ alpha Arg52 confers susceptibility to insulin-dependent diabetes mellitus. *J Clin Invest* 1990; **85**: 1315-1319
- 12 She JX. Susceptibility to type I diabetes: HLA-DQ and DR revisited. *Immunol Today* 1996; **17**: 323-329
- 13 Todd JA, Acha-Orbea H, Bell JI, Chao N, Fronek Z, Jacob CO, McDermott M, Sinha AA, Timmerman L, Steinman L. A molecular basis for MHC class II-associated autoimmunity. *Science* 1988; **240**: 1003-1009

- 14 **Van der Auwera B**, Van Waeyenberge C, Schuit F, Heimberg H, Vandewalle C, Gorus F, Flament J. DRB1\*0403 protects against IDDM in Caucasians with the high-risk heterozygous DQA1\*0301-DQB1\*0302/DQA1\*0501-DQB1\*0201 genotype. Belgian Diabetes Registry. *Diabetes* 1995; **44**: 527-530
- 15 **Bingley PJ**, Bonifacio E, Gale EA. Can we really predict IDDM? *Diabetes* 1993; **42**: 213-220
- 16 **Gale EA**, Bingley PJ. Can we prevent IDDM? *Diabetes Care* 1994; **17**: 339-344
- 17 **Green A**, Gale EA, Patterson CC. Incidence of childhood-onset insulin-dependent diabetes mellitus: the EURODIAB ACE Study. *Lancet* 1992; **339**: 905-909
- 18 **Cucca F**, Muntoni F, Lampis R, Frau F, Argiolas L, Silvetti M, Angius E, Cao A, De Virgiliis S, Congia M. Combinations of specific DRB1, DQA1, DQB1 haplotypes are associated with insulin-dependent diabetes mellitus in Sardinia. *Hum Immunol* 1993; **37**: 85-94
- 19 **Rønningen KS**, Spurkland A, Tait BD, Drummond B, Lopez-Larrea C, Baranda FS, Menedez-Diaz MJ, Caillat-Zucman S, Beaurain G, Garchon HJ, Ilonen J, Reijonen H, Knip M, Boehm BO, Rosak C, Loliger C, Ottenhoff T, Contu L, Carcassi C, Savi M, Zanelli P, Neri M, Hamaguchi K, Kimura A, Dong RP, Chikiba N, Nagataki S, Gorodezky C, Debaz H, Robles C, Coimbra HB, Martinho A, Ruas MA, Sachs JA, Garcia-Pacheco M, Biro A, Nikaein A, Dombrasovsky L, Gonwa T, Zmijewsky C, Monos D, Kamoun M, Layrisse Z, Magli MC, Balducci P, Thorsby E. HLA class II associations in insulin-dependent diabetes mellitus among blacks, Caucasoids and Japanese. In: Tsuji K, Aizawa M, Sasazuki T, editors. HLA 1991: Proceedings of the 11th International Histocompatibility Workshop and Conference, Yokohama, Japan, 1991. Oxford: Oxford University Press, 1992: 713-722
- 20 **Ilonen J**, Koskinen S, Nejentsev S, Sjöroos M, Knip M, Schwartz EI, Adojaan B, Kovalchuk L, Sochnevs A. HLA-DQB1\*0304-DRB1\*0408 haplotype associated with insulin-dependent diabetes mellitus in populations in the eastern Baltic region. *Tissue Antigens* 1997; **49**: 532-534
- 21 **Van der Auwera BJ**, Schuit FC, Weets I, Ivens A, Van Aultreuve JE, Gorus FK. Relative and absolute HLA-DQA1-DQB1 linked risk for developing type I diabetes before 40 years of age in the Belgian population: implications for future prevention studies. *Hum Immunol* 2002; **63**: 40-50
- 22 **Bottini N**, Vang T, Cucca F, Mustelin T. Role of PTPN22 in type 1 diabetes and other autoimmune diseases. *Semin Immunol* 2006; **18**: 207-213
- 23 **Fife BT**, Bluestone JA. Control of peripheral T-cell tolerance and autoimmunity via the CTLA-4 and PD-1 pathways. *Immunol Rev* 2008; **224**: 166-182
- 24 **Mosaad YM**, Elsharkawy AA, El-Deek BS. Association of CTLA-4 (+49A/G) gene polymorphism with type 1 diabetes mellitus in Egyptian children. *Immunol Invest* 2012; **41**: 28-37
- 25 **Nimri R**, Weintrob N, Benzaquen H, Ofan R, Fayman G, Phillip M. Insulin pump therapy in youth with type 1 diabetes: a retrospective paired study. *Pediatrics* 2006; **117**: 2126-2131
- 26 **Doyle EA**, Weinzier SA, Steffen AT, Ahern JA, Vincent M, Tamborlane WV. A randomized, prospective trial comparing the efficacy of continuous subcutaneous insulin infusion with multiple daily injections using insulin glargine. *Diabetes Care* 2004; **27**: 1554-1558
- 27 **American Diabetes Association**. Standards of medical care in diabetes--2010. *Diabetes Care* 2010; **33** Suppl 1: S11-S61
- 28 **Anaya JM**, Corena R, Abad V. Type 1 diabetes mellitus at the crossroad of polyautoimmunity. In: Walker SE, Jara LJ, editors. Endocrine Manifestations of Systemic Autoimmune Diseases. Handbook of Systemic Autoimmune Diseases. Johannesburg: Elsevier Ltd., 2008: 211-220
- 29 **Shapira Y**, Agmon-Levin N, Shoenfeld Y. Defining and analyzing geoepidemiology and human autoimmunity. *J Autoimmun* 2010; **34**: J168-J177
- 30 **Harrison LC**, Honeyman MC, Morahan G, Wentworth JM, Elkassaby S, Colman PG, Furlanos S. Type 1 diabetes: lessons for other autoimmune diseases? *J Autoimmun* 2008; **31**: 306-310
- 31 **Concannon P**, Rich SS, Nepom GT. Genetics of type 1A diabetes. *N Engl J Med* 2009; **360**: 1646-1654
- 32 **Borchers AT**, Uibo R, Gershwin ME. The geoepidemiology of type 1 diabetes. *Autoimmun Rev* 2010; **9**: A355-A365
- 33 **Dorman JS**. Molecular epidemiology of insulin-dependent diabetes mellitus. *Epidemiol Rev* 1997; **19**: 91-98
- 34 **Lee HC**, Ikegami H, Fujisawa T, Ogiwara T, Park SW, Chung YS, Park JO, Lee EJ, Lim SK, Kim KR, Huh KB, Kim YS, Lee DS, Kim DH. Role of HLA class II alleles in Korean patients with IDDM. *Diabetes Res Clin Pract* 1996; **31**: 9-15
- 35 **Katahira M**, Ishiguro T, Segawa S, Kuzuya-Nagao K, Hara I, Nishisaki T. Reevaluation of human leukocyte antigen DR-DQ haplotype and genotype in type 1 diabetes in the Japanese population. *Horm Res* 2008; **69**: 284-289
- 36 **Cinek O**, Kolousková S, Snajderová M, Sumník Z, Sedláková P, Drevínek P, Vavrinec J, Rønningen KS. HLA class II genetic association of type 1 diabetes mellitus in Czech children. *Pediatr Diabetes* 2001; **2**: 98-102
- 37 **Guja C**, Guja L, Nutland S, Rance H, Sebastien M, Todd JA, Ionescu-Tirgoviste C. Type 1 diabetes genetic susceptibility encoded by HLA DQB1 genes in Romania. *J Cell Mol Med* 2004; **8**: 249-256
- 38 **Hermann R**, Soltész G. [Predictive genetic screening for type-1 diabetes in the Hungarian population]. *Orv Hetil* 2004; **145**: 337-342
- 39 **Lambert AP**, Gillespie KM, Thomson G, Cordell HJ, Todd JA, Gale EA, Bingley PJ. Absolute risk of childhood-onset type 1 diabetes defined by human leukocyte antigen class II genotype: a population-based study in the United Kingdom. *J Clin Endocrinol Metab* 2004; **89**: 4037-4043
- 40 **Altobelli E**, Blasetti A, Petrocelli R, Tumini S, Azzarone R, Tiberti S, Battistoni C, Merante D, Verrotti A, Fioroni MA, Iannarelli R, Poccia G, Papola F. HLA DR/DQ alleles and risk of type I diabetes in childhood: a population-based case-control study. *Clin Exp Med* 2005; **5**: 72-79
- 41 **Urcelay E**, Santiago JL, de la Calle H, Martínez A, Méndez J, Ibarra JM, Maluenda C, Fernández-Arquero M, de la Concha EG. Type 1 diabetes in the Spanish population: additional factors to class II HLA-DR3 and -DR4. *BMC Genomics* 2005; **6**: 56
- 42 **Buc M**, Bucová M, Javor J, Krivosíková M, Stuchlíková M, Shawkatova I, Michalková D, Barák L, Jancová E, Petrek M. Associations between HLA class II alleles and type 1 diabetes mellitus in the Slovak population. *Endocr Regul* 2006; **40**: 1-6
- 43 **Saruhan-Direskeneli G**, Uyar FA, Bas F, Günöz H, Bundak R, Saka N, Darendeliler F. HLA-DR and -DQ associations with insulin-dependent diabetes mellitus in a population of Turkey. *Hum Immunol* 2000; **61**: 296-302
- 44 **Eller E**, Vardi P, McFann KK, Babu SR, Yu L, Bugawan TL, Erlich HA, Eisenbarth GS, Fain PR. Differential effects of DRB1\*0301 and DQA1\*0501-DQB1\*0201 on the activation and progression of islet cell autoimmunity. *Genes Immun* 2007; **8**: 628-633
- 45 **Ferreira AC**, Gomes KB, Sampaio IB, Oliveira VC, Pardini VC, Godard AL. Type 1 diabetes susceptibility determined by HLA alleles and CTLA-4 and insulin genes polymorphisms in Brazilians. *Arq Bras Endocrinol Metabol* 2009; **53**: 368-373
- 46 **Rojas-Villarraga A**, Botello-Corzo D, Anaya JM. HLA-Class II in Latin American patients with type 1 diabetes. *Autoimmun Rev* 2010; **9**: 666-673
- 47 **Manan H**, Angham AM, Sittelbanat A. Genetic and diabetic auto-antibody markers in Saudi children with type 1 diabetes. *Hum Immunol* 2010; **71**: 1238-1242
- 48 **Ei Wafai RJ**, Chmaisse HN, Makki RF, Fakhoury H. Associa-

- tion of HLA class II alleles and CTLA-4 polymorphism with type 1 diabetes. *Saudi J Kidney Dis Transpl* 2011; **22**: 273-281
- 49 **Haider MZ**, Shaltout A, Alsaeid K, Qabazard M, Dorman J. Prevalence of human leukocyte antigen DQA1 and DQB1 alleles in Kuwaiti Arab children with type 1 diabetes mellitus. *Clin Genet* 1999; **56**: 450-456
- 50 **Stayoussef M**, Benmansour J, Al-Irhayim AQ, Said HB, Rayana CB, Mahjoub T, Almawi WY. Autoimmune type 1 diabetes genetic susceptibility encoded by human leukocyte antigen DRB1 and DQB1 genes in Tunisia. *Clin Vaccine Immunol* 2009; **16**: 1146-1150
- 51 **Al-Jenaidi FA**, Wakim-Ghorayeb SF, Al-Abbasi A, Arekat MR, Irani-Hakime N, Najm P, Al-Ola K, Motala AA, Almawi WY. Contribution of selective HLA-DRB1/DQB1 alleles and haplotypes to the genetic susceptibility of type 1 diabetes among Lebanese and Bahraini Arabs. *J Clin Endocrinol Metab* 2005; **90**: 5104-5109
- 52 **Kwon OJ**, Brautbar C, Weintrob N, Sprecher E, Saphirman C, Bloch K, Pinhas-Hamiel O, Assah S, Vardi P, Israel S. Immunogenetics of HLA class II in Israeli Ashkenazi Jewish, Israeli non-Ashkenazi Jewish, and in Israeli Arab IDDM patients. *Hum Immunol* 2001; **62**: 85-91
- 53 **Gaber SA**, Mazzola G, Berrino M, Canale L, Cornaglia M, Ghali I, Sergio Curtioni E, Amoroso A. Human leukocyte antigen class II polymorphisms and genetic susceptibility of IDDM in Egyptian children. *Diabetes Care* 1994; **17**: 1341-1344
- 54 **Lucotte G**, Mercier G. Brief communication: Y-chromosome haplotypes in Egypt. *Am J Phys Anthropol* 2003; **121**: 63-66
- 55 **Badran WA**, Fahmy I, Abdel-Megid WM, Elder K, Mansour R, Kent-First M. Length of androgen receptor-CAG repeats in fertile and infertile Egyptian men. *J Androl* 2009; **30**: 416-425
- 56 **Hermann R**, Mijovic CH, Rayner M, Croft N, Kelly MA, Jenkins D, Soltész G, Barnett AH. HLA alleles and IDDM in children in Hungary: a comparison with Finland. *Hum Immunol* 2001; **62**: 391-398
- 57 **Todd JA**. Etiology of type 1 diabetes. *Immunity* 2010; **32**: 457-467
- 58 **Price P**, Cheong KY, Boodhoo A, Witt CS, McCann V, Christiansen FT, Allcock RJ. Can MHC class II genes mediate resistance to type 1 diabetes? *Immunol Cell Biol* 2001; **79**: 602-606
- 59 **Rønningen KS**, Bangstad HJ, Undlien DE, Thorsby E. Influence of genetic factors (HLA class II genes, insulin-gene region polymorphisms) and metabolic control on the development of diabetic nephropathy. *Diabetes Res* 1993; **23**: 31-40

**S- Editor** Wu X **L- Editor** Hughes D **E- Editor** Zheng XM



## Hyperinsulinemia and insulin resistance in a patient with type 2 diabetes complicated with myelofibrosis

Hidetaka Hamasaki, Shuichi Mishima, Hidekatsu Yanai

Hidetaka Hamasaki, Shuichi Mishima, Hidekatsu Yanai, Department of Internal Medicine, Kohnodai Hospital, National Center for Global Health and Medicine, Chiba 272-8516, Japan  
Author contributions: Hamasaki H, Mishima S and Yanai H contributed to the conception, writing and editing of the letter; and all authors also treated the patient presented in the letter, and contributed data collection.

Supported by The Grant of National Center for Global Health and Medicine, No. 22-120

Correspondence to: Hidekatsu Yanai, MD, PhD, FACP, Department of Internal Medicine, Kohnodai Hospital, National Center for Global Health and Medicine, Chiba 272-8516, Japan. [dyanai@hospk.ncgm.go.jp](mailto:dyanai@hospk.ncgm.go.jp)

Telephone: +81-47-3733501 Fax: +81-47-3721858

Received: May 22, 2012 Revised: July 18, 2012

Accepted: August 8, 2012

Published online: August 15, 2012

### Abstract

Inflammation induces insulin resistance and hyperinsulinemia due to elevation of serum cytokines such as tumor necrosis factor- $\alpha$  and interleukins. Chronic myeloproliferative diseases including myelofibrosis show higher serum interleukin levels than healthy subjects, which has been suggested to be the useful markers for disease activity. However, an association between myelofibrosis and insulin resistance has not ever been discussed anywhere. Here we report a case of type 2 diabetes showing remarkable hyperinsulinemia and insulin resistance possibly due to myelofibrosis.

© 2012 Baishideng. All rights reserved.

**Key words:** Cytokines; Hepatosplenomegaly; Hyperinsulinemia; Insulin resistance; Myelofibrosis

**Peer reviewer:** Dr. Armando Rojas-Rubio, Catholic University of Maule, 3605 San Miguel Ave, 617, Talca, Chile

Hamasaki H, Mishima S, Yanai H. Hyperinsulinemia and insulin resistance in a patient with type 2 diabetes complicated with myelofibrosis. *World J Diabetes* 2012; 3(8): 156-157 Available from: URL: <http://www.wjgnet.com/1948-9358/full/v3/i8/156.htm> DOI: <http://dx.doi.org/10.4239/wjd.v3.i8.156>

lin resistance in a patient with type 2 diabetes complicated with myelofibrosis. *World J Diabetes* 2012; 3(8): 156-157 Available from: URL: <http://www.wjgnet.com/1948-9358/full/v3/i8/156.htm> DOI: <http://dx.doi.org/10.4239/wjd.v3.i8.156>

### INTRODUCTION

Chronic inflammation induces insulin resistance and hyperinsulinemia due to elevation of inflammatory cytokines such as tumor necrosis factor- $\alpha$  (TNF- $\alpha$ ) and interleukins<sup>[1]</sup>. Chronic myeloproliferative diseases show higher serum interleukin levels than healthy subjects, recently, which has been suggested to be the useful clinical markers for disease activity of myeloproliferative diseases<sup>[2]</sup>. However, an association between chronic myeloproliferative diseases including myelofibrosis and insulin resistance has not ever been discussed anywhere. Here we report a case with type 2 diabetes showing hyperinsulinemia and insulin resistance possibly due to myelofibrosis.

### CASE REPORT

A 71-year-old man was diagnosed as having type 2 diabetes and myelofibrosis in 1998 and 2001, respectively. His diabetes was treated by  $\alpha$ -glucosidase inhibitor, voglibose (0.6 mg/d) from 1998 to 1999, and his HbA1c levels were 7.0%-7.7%. He was treated by nateglinide (270 mg/d) from 1999 to 2003, and his HbA1c levels were 6.5%-7.4%. After the basal supported oral therapy using nateglinide (270 mg/d) and 4-5 units of NPH-insulin (from 2003-2004) and insulin glargine (from 2004) at bedtime, his HbA1c levels were 6.0%-6.9%. Recently, his diabetes has been treated by using nateglinide (270 mg/d) and 4 units of insulin glargine at bedtime. His myelofibrosis progressed since June, 2011, and the counts of leukocyte and platelets were 2000/ $\mu$ L and  $2.8 \times 10^4$ / $\mu$ L, respectively, and hemoglobin concentration was 73 g/L on July 1, 2011. At the same time, his blood glucose control became

worse. His plasma glucose and HbA1c were 1500 mg/L and 5.8%, respectively, on July 1, 2011. In September, 2011, fasting plasma glucose and HbA1c levels increased to 2020 mg/L and 7.2%, respectively. He was admitted to our hospital. His body height, body weight and body mass index were 169 cm, 56 kg and 19.6 kg/m<sup>2</sup>, respectively. We started the intensive insulin therapy, and his blood glucose levels were 1460-2480 mg/L by using 10, 8 and 10 units of insulin aspart before breakfast, lunch and dinner, respectively, and 8 units of insulin glargine at bedtime, showing a significantly increased requirement of insulin dose. However, unexpectedly, his urinary C-peptide level was remarkably elevated (248 µg/d; normal, 29.2-167 µg/d). Anti-insulin antibody (<sup>125</sup>I-insulin binding rate, 1.5%; normal, < 0.4%) level was slightly elevated, and anti-insulin receptor antibody was not detected. Abdominal computed tomography showed severe hepatosplenomegaly. We measured his serum inflammatory cytokines. Serum levels of TNF-α (6.3 pg/mL; normal, 0.6-2.8 pg/mL), interleukin-1 (11 pg/mL; normal, < 10 pg/mL) and interleukin-6 (5.9 pg/mL; normal, < 4.0 pg/mL) were significantly elevated. However, interleukin-2 (0.8 U/mL; normal, < 0.8 U/mL) and interleukin-8 (< 2.0 pg/mL; normal, < 2.0 pg/mL) were not elevated.

## DISCUSSION

Myelofibrosis is myeloproliferative disease which induces fibrosis of the bone marrow and leads to hepatosplenomegaly, which may cause portal hypertension and portosystemic shunt<sup>[3]</sup>. To our knowledge, the association between myelofibrosis and hyperinsulinemia in humans has not ever been studied. The insulin metabolism in rats with portal hypertension has been previously reported<sup>[4]</sup>. The metabolic clearance rate of insulin in the portal-hypertensive rats was significantly reduced in comparison with the control rats<sup>[4]</sup>. The control of blood glucose levels when he was diagnosed as having diabetes is dealt with the long-term influence of early metabolic control on clinical outcomes, also known as “metabolic

memory”, and where a long-term receptor for advanced glycation end products activation is a crucial element in the maintenance of a low-grade systemic chronic inflammation, which is a very well-known feature of diabetes mellitus<sup>[5,6]</sup>. His plasma glucose control was poor (HbA1c, 6.5%-7.7%) from 1998 to 2003, before the start of the basal supported oral therapy using nateglinide and insulin. We have to mention that early poor glycemic environment might also possibly affect his diabetes aggravation.

We also have to mention that we should have measured cytokine levels on this patient before the onset of the acute progress on June 2011, and we used the cut-off values for cytokines from healthy individuals, however, comparisons should be made in reference to cytokines serum levels on tightly controlled diabetic patients.

In conclusion, the decrease of insulin clearance due to portosystemic shunt, and elevated serum levels of TNF-α interleukin-1 and interleukin-6, strongly associated with insulin resistance<sup>[1]</sup>, may induce hyperinsulinemia and insulin resistance in our patient with type 2 diabetes complicated with myelofibrosis.

## REFERENCES

- 1 **Shoelson SE**, Lee J, Goldfine AB. Inflammation and insulin resistance. *J Clin Invest* 2006; **116**: 1793-1801
- 2 **Panteli KE**, Hatzimichael EC, Bouranta PK, Katsaraki A, Seferiadis K, Stebbing J, Bourantas KL. Serum interleukin (IL)-1, IL-2, sIL-2Ra, IL-6 and thrombopoietin levels in patients with chronic myeloproliferative diseases. *Br J Haematol* 2005; **130**: 709-715
- 3 **Abu-Hilal M**, Tawaker J. Portal hypertension secondary to myelofibrosis with myeloid metaplasia: a study of 13 cases. *World J Gastroenterol* 2009; **15**: 3128-3133
- 4 **Sikuler E**, Polio J, Groszmann RJ, Hendler R. Glucagon and insulin metabolism in a portal-hypertensive rat model. *Am J Physiol* 1987; **253**: G110-G115
- 5 **LeRoith D**, Fonseca V, Vinik A. Metabolic memory in diabetes--focus on insulin. *Diabetes Metab Res Rev* 2005; **21**: 85-90
- 6 **Lanati N**, Emanuele E, Brondino N, Geroldi D. Soluble RAGE-modulating drugs: state-of-the-art and future perspectives for targeting vascular inflammation. *Curr Vasc Pharmacol* 2010; **8**: 86-92

S- Editor Wu X L- Editor A E- Editor Zheng XM

## ACKNOWLEDGMENTS

# Acknowledgments to reviewers of *World Journal of Diabetes*

We acknowledge our sincere thanks to our reviewers. Many reviewers have contributed their expertise and time to the peer review, a critical process to ensure the quality of our World Series Journals. Both the editors of the journals and authors of the manuscripts submitted to the journals are grateful to the following reviewers for reviewing the articles (either published or rejected) over the past period of time.

**Claudia RL Cardoso, Professor**, Department of Internal Medicine, Federal University of Rio de Janeiro, Rua Croton 72, Riode Janeiro 22750 240, Brazil

**Dr. Goji Hasegawa**, Department of Endocrinology and Metabolism, Kyoto Prefectural University of Medicine Graduate School of Medical

**Science, 465 Kajii-cho**, Hirokoji, Kawaramachi, Kamikyo-ku, Kyoto 602-8566, Japan

**Dr. Pappachan M Joseph**, Department of Medicine, Pariyaram Medical College, C/o Adv Nicholas Joseph, Court Road, Taliparamba, Kannur 670141, India

**Dr. Claudia Kusmic**, Insitute of Clinical Physiology, National Research Council, Via Moruzzi 1, Pisa 56124, Italy

**Dr. Nanne Kleefstra**, Diabetes Centre, Isala Clinics, PO Box 10400, Zwolle 8000 GK, The Netherlands

**Dr. Motoaki Saito**, Department of Mol Pharmacology, Tottori University, 86 Nishimachi, Yonago 683-8503, Japan

**Dr. Serap Yalin**, Pharmacy Faculty, Mersin University, Mersin 33169, Turkey

## Events Calendar 2012

January 15-17, 2012

ICADIT 2012: International conference on Advances in Diabetes and Insulin Therapy  
Zurich, Switzerland

January 29-February 3, 2012  
Genetic and Molecular Basis of Obesity and Body Weight Regulation  
Santa Fe, NM, United States

February 3, 2012  
The Future of Obesity Treatment  
London, United Kingdom

February 8-11, 2012  
5th International Conference on Advanced Technologies and Treatments for Diabetes  
Barcelona, Spain

February 9-10, 2012  
EC Conference on Diabetes and Obesity Research - Save the Date  
Brussels, Belgium

February 21, 2012  
Association of Children's Diabetes Clinicians 6th Annual Meeting  
Coventry, United Kingdom

February 23, 2012  
Diabetes and kidney disease: advances and controversies  
Birmingham, United Kingdom

March 1-3, 2012  
International conference on Nutrition and Growth  
Paris, France

March 7-9, 2012  
Diabetes UK Annual Professional Conference 2012  
Glasgow, United Kingdom

March 15 -16, 2012  
Monogenic Disorders of Insulin Secretion: Congenital Hyperinsulinism and Neonatal Diabetes  
Philadelphia, PA, United States

March 15 -17, 2012  
2012 DF Con - Diabetic Foot Global Conference  
Hollywood, CA, United States

March 19-22, 2012  
Society for Endocrinology BES 2012  
Harrogate, United Kingdom

March 22-25, 2012  
2nd Latin America Congress on Controversies to Consensus in Diabetes, Obesity and Hypertension  
Rio de Janeiro, Brazil

March 29-31, 2012  
The 4th International Conference on Advances in Diabetes and Insulin Therapy  
Riga, Latvia

March 29-April 1, 2012  
New Frontiers in Diabetes Management  
Ocho Rios, Jamaica

April 2-6, 2012  
6th Annual Primary Care Spring Conference: Session 1  
Palm Coast, FL, United States

April 4-7, 2012  
39th Panhellenic Congress of Endocrinology and Metabolism  
Athens, Greece

April 11-13, 2012  
ICDM 2012: International Conference on Diabetes and Metabolism  
Venice, Italy

April 11-13, 2012  
ICDHLSP 2012: International Conference on Diabetes, Hypertension, Lipids and Stroke Prevention  
Venice, Italy

April 16-17, 2012  
Paediatric and Adolescent Diabetes  
Birmingham, United Kingdom

April 22-25, 2012  
9th International Podocyte Conference  
Miami, FL, United States

May 9-12, 2012  
19th European Congress on Obesity  
Lyon, France

May 23-27, 2012  
AACE 21st Annual Scientific and Clinical Congress - American Association of Clinical Endocrinologists  
Philadelphia, PA, United States

May 24-27, 2012  
27th Annual Clinical Conference on Diabetes  
Bonita Springs, FL, United States

June 8-12, 2012  
American Diabetes Association's 72nd Scientific Sessions  
Philadelphia, PA, United States

June 29-August 2, 2012  
ESE Summer School on Endocrinology  
Bregenz, Austria

August 1-4, 2012  
AADE 39th Annual Meeting - American Association of Diabetes Educators  
Indianapolis, IN, United States

September 13-16, 2012  
EMBO-EMBL Symposium: Diabetes and Obesity  
Heidelberg, Germany

October 1-5, 2012  
48th European Association for the Study of Diabetes Annual Meeting  
Berlin, Germany

November 7-9, 2012  
40th Meeting of the British Society for Paediatric Endocrinology and Diabetes  
Leeds, United Kingdom

November 8-11, 2012  
The 4th World Congress on Controversies to Consensus in Diabetes, Obesity and Hypertension  
Barcelona, Spain

December 4-6, 2012  
1st American Diabetes Association Middle East Congress  
Dubai, United Arab Emirates





## INSTRUCTIONS TO AUTHORS

### GENERAL INFORMATION

*World Journal of Diabetes* (*World J Diabetes*, *WJD*, online ISSN 1948-9358, DOI: 10.4239), is a monthly, open-access (OA), peer-reviewed journal supported by an editorial board of 323 experts in diabetes mellitus research from 38 countries.

The biggest advantage of the OA model is that it provides free, full-text articles in PDF and other formats for experts and the public without registration, which eliminates the obstacle that traditional journals possess and usually delays the speed of the propagation and communication of scientific research results.

#### Maximization of personal benefits

The role of academic journals is to exhibit the scientific levels of a country, a university, a center, a department, and even a scientist, and build an important bridge for communication between scientists and the public. As we all know, the significance of the publication of scientific articles lies not only in disseminating and communicating innovative scientific achievements and academic views, as well as promoting the application of scientific achievements, but also in formally recognizing the "priority" and "copyright" of innovative achievements published, as well as evaluating research performance and academic levels. So, to realize these desired attributes of *WJD* and create a well-recognized journal, the following four types of personal benefits should be maximized. The maximization of personal benefits refers to the pursuit of the maximum personal benefits in a well-considered optimal manner without violation of the laws, ethical rules and the benefits of others. (1) Maximization of the benefits of editorial board members: The primary task of editorial board members is to give a peer review of an unpublished scientific article via online office system to evaluate its innovativeness, scientific and practical values and determine whether it should be published or not. During peer review, editorial board members can also obtain cutting-edge information in that field at first hand. As leaders in their field, they have priority to be invited to write articles and publish commentary articles. We will put peer reviewers' names and affiliations along with the article they reviewed in the journal to acknowledge their contribution; (2) Maximization of the benefits of authors: Since *WJD* is an OA journal, readers around the world can immediately download and read, free of charge, high-quality, peer-reviewed articles from *WJD* official website, thereby realizing the goals and significance of the communication between authors and peers as well as public reading; (3) Maximization of the benefits of readers: Readers can read or use, free of charge, high-quality peer-reviewed articles without any limits, and cite the arguments, viewpoints, concepts, theories, methods, results, conclusion or facts and data of pertinent literature so as to validate the innovativeness, scientific and practical values of their own research achievements, thus ensuring that their articles have novel arguments or viewpoints, solid evidence and correct conclusion; and (4) Maximization of the benefits of employees: It is an iron law that a first-class journal is unable to exist without first-class editors, and only first-class editors can create a first-class academic journal. We insist on strengthening our team cultivation and construction so that every employee, in an open, fair and transparent environment, could contribute their wisdom to edit and publish high-quality articles, thereby realizing the maximization

of the personal benefits of editorial board members, authors and readers, and yielding the greatest social and economic benefits.

#### Aims and scope

The major task of *WJD* is to report rapidly the most recent results in basic and clinical research on diabetes including: metabolic syndrome, functions of  $\alpha$ ,  $\beta$ ,  $\delta$  and PP cells of the pancreatic islets, effect of insulin and insulin resistance, pancreatic islet transplantation, adipose cells and obesity, clinical trials, clinical diagnosis and treatment, rehabilitation, nursing and prevention. This covers epidemiology, etiology, immunology, pathology, genetics, genomics, proteomics, pharmacology, pharmacokinetics, pharmacogenetics, diagnosis and therapeutics. Reports on new techniques for treating diabetes are also welcome.

#### Columns

The columns in the issues of *WJD* will include: (1) Editorial: To introduce and comment on major advances and developments in the field; (2) Frontier: To review representative achievements, comment on the state of current research, and propose directions for future research; (3) Topic Highlight: This column consists of three formats, including (A) 10 invited review articles on a hot topic, (B) a commentary on common issues of this hot topic, and (C) a commentary on the 10 individual articles; (4) Observation: To update the development of old and new questions, highlight unsolved problems, and provide strategies on how to solve the questions; (5) Guidelines for Basic Research: To provide guidelines for basic research; (6) Guidelines for Clinical Practice: To provide guidelines for clinical diagnosis and treatment; (7) Review: To review systemically progress and unresolved problems in the field, comment on the state of current research, and make suggestions for future work; (8) Original Article: To report innovative and original findings in diabetes; (9) Brief Article: To briefly report the novel and innovative findings in diabetes research; (10) Case Report: To report a rare or typical case; (11) Letters to the Editor: To discuss and make reply to the contributions published in *WJD*, or to introduce and comment on a controversial issue of general interest; (12) Book Reviews: To introduce and comment on quality monographs of diabetes mellitus; and (13) Guidelines: To introduce consensus and guidelines reached by international and national academic authorities worldwide on basic research and clinical practice in diabetes mellitus.

#### Name of journal

*World Journal of Diabetes*

#### ISSN

ISSN 1948-9358 (online)

#### Editor-in-chief

**Donald W Bowden, PhD, Professor**, Center for Human Genomics, Wake Forest University School of Medicine, Medical Center Blvd., Winston-Salem, NC 27157, United States

**Lu Qi, MD, PhD, Assistant Professor**, Department of Nutrition, Harvard School of Public Health, 665 Huntington Ave., Boston, MA 02115, United States

## Instructions to authors

### Editorial office

*World Journal of Diabetes*  
Editorial Department: Room 903, Building D,  
Ocean International Center,  
No. 62 Dongsihuan Zhonglu,  
Chaoyang District, Beijing 100025, China  
E-mail: [wjd@wjgnet.com](mailto:wjd@wjgnet.com)  
<http://www.wjgnet.com>  
Telephone: +86-10-85381892  
Fax: +86-10-85381893

### Indexed and abstracted in

PubMed Central, PubMed, Digital Object Identifier, and Directory of Open Access Journals

### Published by

Baishideng Publishing Group Co., Limited

## SPECIAL STATEMENT

All articles published in this journal represent the viewpoints of the authors except where indicated otherwise.

### Biostatistical editing

Statistical review is performed after peer review. We invite an expert in Biomedical Statistics to evaluate the statistical method used in the paper, including *t*-test (group or paired comparisons), chi-squared test, Redit, probit, logit, regression (linear, curvilinear, or stepwise), correlation, analysis of variance, analysis of covariance, *etc.* The reviewing points include: (1) Statistical methods should be described when they are used to verify the results; (2) Whether the statistical techniques are suitable or correct; (3) Only homogeneous data can be averaged. Standard deviations are preferred to standard errors. Give the number of observations and subjects (*n*). Losses in observations, such as drop-outs from the study should be reported; (4) Values such as ED50, LD50, IC50 should have their 95% confidence limits calculated and compared by weighted probit analysis (Bliss and Finney); and (5) The word 'significantly' should be replaced by its synonyms (if it indicates extent) or the *P* value (if it indicates statistical significance).

### Conflict-of-interest statement

In the interests of transparency and to help reviewers assess any potential bias, *WJD* requires authors of all papers to declare any competing commercial, personal, political, intellectual, or religious interests in relation to the submitted work. Referees are also asked to indicate any potential conflict they might have reviewing a particular paper. Before submitting, authors are suggested to read "Uniform Requirements for Manuscripts Submitted to Biomedical Journals: Ethical Considerations in the Conduct and Reporting of Research: Conflicts of Interest" from International Committee of Medical Journal Editors (ICMJE), which is available at: [http://www.icmje.org/ethical\\_4conflicts.html](http://www.icmje.org/ethical_4conflicts.html).

Sample wording: [Name of individual] has received fees for serving as a speaker, a consultant and an advisory board member for [names of organizations], and has received research funding from [names of organization]. [Name of individual] is an employee of [name of organization]. [Name of individual] owns stocks and shares in [name of organization]. [Name of individual] owns patent [patent identification and brief description].

### Statement of informed consent

Manuscripts should contain a statement to the effect that all human studies have been reviewed by the appropriate ethics committee or it should be stated clearly in the text that all persons gave their informed consent prior to their inclusion in the study. Details that might disclose the identity of the subjects under study should be omitted. Authors should also draw attention to the Code of Ethics of the World Medical Association (Declaration of Helsinki, 1964, as revised in 2004).

### Statement of human and animal rights

When reporting the results from experiments, authors should follow the highest standards and the trial should conform to Good Clinical Practice (for example, US Food and Drug Administration Good Clinical Practice in FDA-Regulated Clinical Trials; UK Medicines Research Council Guidelines for Good Clinical Practice in Clinical Trials) and/or the World Medical Association Declaration of Helsinki. Generally, we suggest authors follow the lead investigator's national standard. If doubt exists whether the research was conducted in accordance with the above standards, the authors must explain the rationale for their approach and demonstrate that the institutional review body explicitly approved the doubtful aspects of the study.

Before submitting, authors should make their study approved by the relevant research ethics committee or institutional review board. If human participants were involved, manuscripts must be accompanied by a statement that the experiments were undertaken with the understanding and appropriate informed consent of each. Any personal item or information will not be published without explicit consents from the involved patients. If experimental animals were used, the materials and methods (experimental procedures) section must clearly indicate that appropriate measures were taken to minimize pain or discomfort, and details of animal care should be provided.

## SUBMISSION OF MANUSCRIPTS

Manuscripts should be typed in 1.5 line spacing and 12 pt. Book Antiqua with ample margins. Number all pages consecutively, and start each of the following sections on a new page: Title Page, Abstract, Introduction, Materials and Methods, Results, Discussion, Acknowledgements, References, Tables, Figures, and Figure Legends. Neither the editors nor the publisher are responsible for the opinions expressed by contributors. Manuscripts formally accepted for publication become the permanent property of Baishideng Publishing Group Co., Limited, and may not be reproduced by any means, in whole or in part, without the written permission of both the authors and the publisher. We reserve the right to copy-edit and put onto our website accepted manuscripts. Authors should follow the relevant guidelines for the care and use of laboratory animals of their institution or national animal welfare committee. For the sake of transparency in regard to the performance and reporting of clinical trials, we endorse the policy of the International Committee of Medical Journal Editors to refuse to publish papers on clinical trial results if the trial was not recorded in a publicly-accessible registry at its outset. The only register now available, to our knowledge, is <http://www.clinicaltrials.gov> sponsored by the United States National Library of Medicine and we encourage all potential contributors to register with it. However, in the case that other registers become available you will be duly notified. A letter of recommendation from each author's organization should be provided with the contributed article to ensure the privacy and secrecy of research is protected.

Authors should retain one copy of the text, tables, photographs and illustrations because rejected manuscripts will not be returned to the author(s) and the editors will not be responsible for loss or damage to photographs and illustrations sustained during mailing.

### Online submissions

Manuscripts should be submitted through the Online Submission System at: <http://www.wjgnet.com/esps/>. Authors are highly recommended to consult the ONLINE INSTRUCTIONS TO AUTHORS ([http://www.wjgnet.com/1948-9358/g\\_info\\_20100107165233.htm](http://www.wjgnet.com/1948-9358/g_info_20100107165233.htm)) before attempting to submit online. For assistance, authors encountering problems with the Online Submission System may send an email describing the problem to [wjd@wjgnet.com](mailto:wjd@wjgnet.com), or by telephone: +86-10-85381892. If you submit your manuscript online, do not make a postal contribution. Repeated online submission for the same manuscript is strictly prohibited.

## MANUSCRIPT PREPARATION

All contributions should be written in English. All articles must be submitted using word-processing software. All submissions must be typed in 1.5 line spacing and 12 pt. Book Antiqua with ample margins. Style should conform to our house format. Required information for each of the manuscript sections is as follows:

### Title page

**Title:** Title should be less than 12 words.

**Running title:** A short running title of less than 6 words should be provided.

**Authorship:** Authorship credit should be in accordance with the standard proposed by International Committee of Medical Journal Editors, based on (1) substantial contributions to conception and design, acquisition of data, or analysis and interpretation of data; (2) drafting the article or revising it critically for important intellectual content; and (3) final approval of the version to be published. Authors should meet conditions 1, 2, and 3.

**Institution:** Author names should be given first, then the complete name of institution, city, province and postcode. For example, Xu-Chen Zhang, Li-Xin Mei, Department of Pathology, Chengde Medical College, Chengde 067000, Hebei Province, China. One author may be represented from two institutions, for example, George Sgourakis, Department of General, Visceral, and Transplantation Surgery, Essen 45122, Germany; George Sgourakis, 2nd Surgical Department, Korgialenio-Benakio Red Cross Hospital, Athens 15451, Greece

**Author contributions:** The format of this section should be: Author contributions: Wang CL and Liang L contributed equally to this work; Wang CL, Liang L, Fu JF, Zou CC, Hong F and Wu XM designed the research; Wang CL, Zou CC, Hong F and Wu XM performed the research; Xue JZ and Lu JR contributed new reagents/analytic tools; Wang CL, Liang L and Fu JF analyzed the data; and Wang CL, Liang L and Fu JF wrote the paper.

**Supportive foundations:** The complete name and number of supportive foundations should be provided, e.g., Supported by National Natural Science Foundation of China, No. 30224801

**Correspondence to:** Only one corresponding address should be provided. Author names should be given first, then author title, affiliation, the complete name of institution, city, postcode, province, country, and email. All the letters in the email should be in lower case. A space interval should be inserted between country name and email address. For example, Montgomery Bissell, MD, Professor of Medicine, Chief, Liver Center, Gastroenterology Division, University of California, Box 0538, San Francisco, CA 94143, United States. montgomery.bissell@ucsf.edu

**Telephone and fax:** Telephone and fax should consist of +, country number, district number and telephone or fax number, e.g., Telephone: +86-10-85381892 Fax: +86-10-85381893

**Peer reviewers:** All articles received are subject to peer review. Normally, three experts are invited for each article. Decision for acceptance is made only when at least two experts recommend an article for publication. Reviewers for accepted manuscripts are acknowledged in each manuscript, and reviewers of articles which were not accepted will be acknowledged at the end of each issue. To ensure the quality of the articles published in *WJD*, reviewers of accepted manuscripts will be announced by publishing the name, title/position and institution of the reviewer in the footnote accompanying the printed article. For example, reviewers: Professor Jing-Yuan Fang, Shanghai Institute of Digestive Disease, Shanghai, Affiliated Renji Hospital, Medical Faculty, Shanghai Jiaotong University, Shanghai, China; Professor Xin-Wei Han, Department of Radiology, The First Affiliated Hospital, Zhengzhou University,

Zhengzhou, Henan Province, China; and Professor Anren Kuang, Department of Nuclear Medicine, Huaxi Hospital, Sichuan University, Chengdu, Sichuan Province, China.

### Abstract

There are unstructured abstracts (no less than 256 words) and structured abstracts (no less than 480). The specific requirements for structured abstracts are as follows:

An informative, structured abstracts of no less than 480 words should accompany each manuscript. Abstracts for original contributions should be structured into the following sections. AIM (no more than 20 words): Only the purpose should be included. Please write the aim as the form of "To investigate/study/...; MATERIALS AND METHODS (no less than 140 words); RESULTS (no less than 294 words): You should present *P* values where appropriate and must provide relevant data to illustrate how they were obtained, e.g.  $6.92 \pm 3.86$  vs  $3.61 \pm 1.67$ ,  $P < 0.001$ ; CONCLUSION (no more than 26 words).

### Key words

Please list 5-10 key words, selected mainly from *Index Medicus*, which reflect the content of the study.

### Text

For articles of these sections, original articles, rapid communication and case reports, the main text should be structured into the following sections: INTRODUCTION, MATERIALS AND METHODS, RESULTS and DISCUSSION, and should include appropriate Figures and Tables. Data should be presented in the main text or in Figures and Tables, but not in both. The main text format of these sections, editorial, topic highlight, case report, letters to the editors, can be found at: [http://www.wjgnet.com/1948-9358/g\\_info\\_20100107165233.htm](http://www.wjgnet.com/1948-9358/g_info_20100107165233.htm).

### Illustrations

Figures should be numbered as 1, 2, 3, *etc.*, and mentioned clearly in the main text. Provide a brief title for each figure on a separate page. Detailed legends should not be provided under the figures. This part should be added into the text where the figures are applicable. Figures should be either Photoshop or Illustrator files (in tiff, eps, jpeg formats) at high-resolution. Examples can be found at: <http://www.wjgnet.com/1007-9327/13/4520.pdf>; <http://www.wjgnet.com/1007-9327/13/4554.pdf>; <http://www.wjgnet.com/1007-9327/13/4891.pdf>; <http://www.wjgnet.com/1007-9327/13/4986.pdf>; <http://www.wjgnet.com/1007-9327/13/4498.pdf>. Keeping all elements compiled is necessary in line-art image. Scale bars should be used rather than magnification factors, with the length of the bar defined in the legend rather than on the bar itself. File names should identify the figure and panel. Avoid layering type directly over shaded or textured areas. Please use uniform legends for the same subjects. For example: Figure 1 Pathological changes in atrophic gastritis after treatment. A: ...; B: ...; C: ...; D: ...; E: ...; F: ...; G: ...*etc.* It is our principle to publish high resolution-figures for the printed and E-versions.

### Tables

Three-line tables should be numbered 1, 2, 3, *etc.*, and mentioned clearly in the main text. Provide a brief title for each table. Detailed legends should not be included under tables, but rather added into the text where applicable. The information should complement, but not duplicate the text. Use one horizontal line under the title, a second under column heads, and a third below the Table, above any footnotes. Vertical and italic lines should be omitted.

### Notes in tables and illustrations

Data that are not statistically significant should not be noted. <sup>a</sup>*P* < 0.05, <sup>b</sup>*P* < 0.01 should be noted (*P* > 0.05 should not be noted). If there are other series of *P* values, <sup>c</sup>*P* < 0.05 and <sup>d</sup>*P* < 0.01 are used. A third series of *P* values can be expressed as <sup>e</sup>*P* < 0.05 and <sup>f</sup>*P* < 0.01.



## Instructions to authors

Other notes in tables or under illustrations should be expressed as <sup>1</sup>F, <sup>2</sup>F, <sup>3</sup>F; or sometimes as other symbols with a superscript (Arabic numerals) in the upper left corner. In a multi-curve illustration, each curve should be labeled with ●, ○, ■, □, ▲, △, etc., in a certain sequence.

### Acknowledgments

Brief acknowledgments of persons who have made genuine contributions to the manuscript and who endorse the data and conclusions should be included. Authors are responsible for obtaining written permission to use any copyrighted text and/or illustrations.

## REFERENCES

### Coding system

The author should number the references in Arabic numerals according to the citation order in the text. Put reference numbers in square brackets in superscript at the end of citation content or after the cited author's name. For citation content which is part of the narration, the coding number and square brackets should be typeset normally. For example, "Crohn's disease (CD) is associated with increased intestinal permeability<sup>[1,2]</sup>". If references are cited directly in the text, they should be put together within the text, for example, "From references<sup>[19,22-24]</sup>, we know that..."

When the authors write the references, please ensure that the order in text is the same as in the references section, and also ensure the spelling accuracy of the first author's name. Do not list the same citation twice.

### PMID and DOI

Please provide PubMed citation numbers to the reference list, e.g. PMID and DOI, which can be found at <http://www.ncbi.nlm.nih.gov/sites/entrez?db=pubmed> and <http://www.crossref.org/SimpleTextQuery/>, respectively. The numbers will be used in E-version of this journal.

### Style for journal references

Authors: the name of the first author should be typed in bold-faced letters. The family name of all authors should be typed with the initial letter capitalized, followed by their abbreviated first and middle initials. (For example, Lian-Sheng Ma is abbreviated as Ma LS, Bo-Rong Pan as Pan BR). The title of the cited article and italicized journal title (journal title should be in its abbreviated form as shown in PubMed), publication date, volume number (in black), start page, and end page [PMID: 11819634 DOI: 10.3748/wjg.13.5396].

### Style for book references

Authors: the name of the first author should be typed in bold-faced letters. The surname of all authors should be typed with the initial letter capitalized, followed by their abbreviated middle and first initials. (For example, Lian-Sheng Ma is abbreviated as Ma LS, Bo-Rong Pan as Pan BR) Book title. Publication number. Publication place: Publication press, Year: start page and end page.

### Format

#### Journals

English journal article (list all authors and include the PMID where applicable)

- 1 **Jung EM**, Clevert DA, Schreyer AG, Schmitt S, Rennert J, Kubale R, Feuerbach S, Jung F. Evaluation of quantitative contrast harmonic imaging to assess malignancy of liver tumors: A prospective controlled two-center study. *World J Gastroenterol* 2007; **13**: 6356-6364 [PMID: 18081224 DOI: 10.3748/wjg.13.6356]

Chinese journal article (list all authors and include the PMID where applicable)

- 2 **Lin GZ**, Wang XZ, Wang P, Lin J, Yang FD. Immunologic effect of Jianpi Yishen decoction in treatment of Pixu-diarrhoea. *Shijie Huaren Xiaobao Zazhi* 1999; **7**: 285-287

#### In press

- 3 **Tian D**, Araki H, Stahl E, Bergelson J, Kreitman M. Signature of balancing selection in Arabidopsis. *Proc Natl Acad Sci USA* 2006; In press

#### Organization as author

- 4 **Diabetes Prevention Program Research Group**. Hypertension, insulin, and proinsulin in participants with impaired glucose tolerance. *Hypertension* 2002; **40**: 679-686 [PMID: 12411462 PMID:2516377 DOI:10.1161/01.HYP.0000035706.28494.09]

#### Both personal authors and an organization as author

- 5 **Vallancien G**, Emberton M, Harving N, van Moorselaar RJ; Alf-One Study Group. Sexual dysfunction in 1, 274 European men suffering from lower urinary tract symptoms. *J Urol* 2003; **169**: 2257-2261 [PMID: 12771764 DOI:10.1097/01.ju.0000067940.76090.73]

#### No author given

- 6 21st century heart solution may have a sting in the tail. *BMJ* 2002; **325**: 184 [PMID: 12142303 DOI:10.1136/bmj.325.7357.184]

#### Volume with supplement

- 7 **Geraud G**, Spierings EL, Keywood C. Tolerability and safety of frovatriptan with short- and long-term use for treatment of migraine and in comparison with sumatriptan. *Headache* 2002; **42** Suppl 2: S93-99 [PMID: 12028325 DOI:10.1046/j.1526-4610.42.s2.7.x]

#### Issue with no volume

- 8 **Banit DM**, Kaufer H, Hartford JM. Intraoperative frozen section analysis in revision total joint arthroplasty. *Clin Orthop Relat Res* 2002; (**401**): 230-238 [PMID: 12151900 DOI:10.1097/00003086-200208000-00026]

#### No volume or issue

- 9 Outreach: Bringing HIV-positive individuals into care. *HRS-A Careaction* 2002; 1-6 [PMID: 12154804]

## Books

#### Personal author(s)

- 10 **Sherlock S**, Dooley J. Diseases of the liver and biliary system. 9th ed. Oxford: Blackwell Sci Pub, 1993: 258-296

#### Chapter in a book (list all authors)

- 11 **Lam SK**. Academic investigator's perspectives of medical treatment for peptic ulcer. In: Swabb EA, Azabo S. Ulcer disease: investigation and basis for therapy. New York: Marcel Dekker, 1991: 431-450

#### Author(s) and editor(s)

- 12 **Breedlove GK**, Schorfheide AM. Adolescent pregnancy. 2nd ed. Wiczorek RR, editor. White Plains (NY): March of Dimes Education Services, 2001: 20-34

#### Conference proceedings

- 13 **Harnden P**, Joffe JK, Jones WG, editors. Germ cell tumours V. Proceedings of the 5th Germ cell tumours Conference; 2001 Sep 13-15; Leeds, UK. New York: Springer, 2002: 30-56

#### Conference paper

- 14 **Christensen S**, Oppacher F. An analysis of Koza's computational effort statistic for genetic programming. In: Foster JA, Lutton E, Miller J, Ryan C, Tettamanzi AG, editors. Genetic programming. EuroGP 2002: Proceedings of the 5th European Conference on Genetic Programming; 2002 Apr 3-5; Kinsdale, Ireland. Berlin: Springer, 2002: 182-191

#### Electronic journal (list all authors)

- 15 Morse SS. Factors in the emergence of infectious diseases. *Emerg Infect Dis* serial online, 1995-01-03, cited 1996-06-05; 1(1): 24 screens. Available from: URL: <http://www.cdc.gov/ncidod/eid/index.htm>

#### Patent (list all authors)

- 16 **Pagedas AC**, inventor; Ancel Surgical R&D Inc., assignee. Flexible endoscopic grasping and cutting device and positioning tool assembly. United States patent US 20020103498. 2002 Aug 1



**Statistical data**

Write as mean  $\pm$  SD or mean  $\pm$  SE.

**Statistical expression**

Express *t* test as *t* (in italics), *F* test as *F* (in italics), chi square test as  $\chi^2$  (in Greek), related coefficient as *r* (in italics), degree of freedom as *ν* (in Greek), sample number as *n* (in italics), and probability as *P* (in italics).

**Units**

Use SI units. For example: body mass, *m* (B) = 78 kg; blood pressure, *p* (B) = 16.2/12.3 kPa; incubation time, *t* (incubation) = 96 h, blood glucose concentration, *c* (glucose)  $6.4 \pm 2.1$  mmol/L; blood CEA mass concentration, *p* (CEA) = 8.6  $24.5 \mu\text{g/L}$ ;  $\text{CO}_2$  volume fraction, 50 mL/L  $\text{CO}_2$ , not 5%  $\text{CO}_2$ ; likewise for 40 g/L formaldehyde, not 10% formalin; and mass fraction, 8 ng/g, *etc.* Arabic numerals such as 23, 243, 641 should be read 23 243 641.

The format for how to accurately write common units and quantum can be found at: [http://www.wjgnet.com/1948-9358/g\\_info\\_20100107145507.htm](http://www.wjgnet.com/1948-9358/g_info_20100107145507.htm).

**Abbreviations**

Standard abbreviations should be defined in the abstract and on first mention in the text. In general, terms should not be abbreviated unless they are used repeatedly and the abbreviation is helpful to the reader. Permissible abbreviations are listed in Units, Symbols and Abbreviations: A Guide for Biological and Medical Editors and Authors (Ed. Baron DN, 1988) published by The Royal Society of Medicine, London. Certain commonly used abbreviations, such as DNA, RNA, HIV, LD50, PCR, HBV, ECG, WBC, RBC, CT, ESR, CSF, IgG, ELISA, PBS, ATP, EDTA, mAb, can be used directly without further explanation.

**Italics**

Quantities: *t* time or temperature, *c* concentration, *A* area, *l* length, *m* mass, *V* volume.

Genotypes: *gynA*, *arg 1*, *c myc*, *c fos*, *etc.*

Restriction enzymes: *EcoRI*, *HindI*, *BamHI*, *Kbo I*, *Kpn I*, *etc.*

Biology: *H. pylori*, *E. coli*, *etc.*

**Examples for paper writing**

**Editorial:** [http://www.wjgnet.com/1948-9358/g\\_info\\_20100316080002.htm](http://www.wjgnet.com/1948-9358/g_info_20100316080002.htm)

**Frontier:** [http://www.wjgnet.com/1948-9358/g\\_info\\_20100316091946.htm](http://www.wjgnet.com/1948-9358/g_info_20100316091946.htm)

**Topic highlight:** [http://www.wjgnet.com/1948-9358/g\\_info\\_20100316080004.htm](http://www.wjgnet.com/1948-9358/g_info_20100316080004.htm)

**Observation:** [http://www.wjgnet.com/1948-9358/g\\_info\\_20100107142558.htm](http://www.wjgnet.com/1948-9358/g_info_20100107142558.htm)

**Guidelines for basic research:** [http://www.wjgnet.com/1948-9358/g\\_info\\_20100316092358.htm](http://www.wjgnet.com/1948-9358/g_info_20100316092358.htm)

**Guidelines for clinical practice:** [http://www.wjgnet.com/1948-9358/g\\_info\\_20100316092508.htm](http://www.wjgnet.com/1948-9358/g_info_20100316092508.htm)

**Review:** [http://www.wjgnet.com/1948-9358/g\\_info\\_20100107142809.htm](http://www.wjgnet.com/1948-9358/g_info_20100107142809.htm)

**Original articles:** [http://www.wjgnet.com/1948-9358/g\\_info\\_20100107143306.htm](http://www.wjgnet.com/1948-9358/g_info_20100107143306.htm)

**Brief articles:** [http://www.wjgnet.com/1948-9358/g\\_info\\_20100316093137.htm](http://www.wjgnet.com/1948-9358/g_info_20100316093137.htm)

**Case report:** [http://www.wjgnet.com/1948-9358/g\\_info\\_20100107143856.htm](http://www.wjgnet.com/1948-9358/g_info_20100107143856.htm)

**Letters to the editor:** [http://www.wjgnet.com/1948-9358/g\\_info\\_20100107144156.htm](http://www.wjgnet.com/1948-9358/g_info_20100107144156.htm)

**Book reviews:** [http://www.wjgnet.com/1948-9358/g\\_info\\_20100316093525.htm](http://www.wjgnet.com/1948-9358/g_info_20100316093525.htm)

**Guidelines:** [http://www.wjgnet.com/1948-9358/g\\_info\\_20100316093551.htm](http://www.wjgnet.com/1948-9358/g_info_20100316093551.htm)

**SUBMISSION OF THE REVISED MANUSCRIPTS AFTER ACCEPTED**

Please revise your article according to the revision policies of *WJD*. The revised version including manuscript and high-resolution image figures (if any) should be re-submitted online (<http://www.wjgnet.com/1948-9358office/>). The author should send the copyright transfer letter, responses to the reviewers, English language Grade B certificate (for non-native speakers of English) and final manuscript checklist to [wjd@wjgnet.com](mailto:wjd@wjgnet.com).

**Language evaluation**

The language of a manuscript will be graded before it is sent for revision. (1) Grade A: priority publishing; (2) Grade B: minor language polishing; (3) Grade C: a great deal of language polishing needed; and (4) Grade D: rejected. Revised articles should reach Grade A or B.

**Copyright assignment form**

Please download a Copyright assignment form from [http://www.wjgnet.com/1948-9358/g\\_info\\_20100107144846.htm](http://www.wjgnet.com/1948-9358/g_info_20100107144846.htm).

**Responses to reviewers**

Please revise your article according to the comments/suggestions provided by the reviewers. The format for responses to the reviewers' comments can be found at: [http://www.wjgnet.com/1948-9358/g\\_info\\_20100107170340.htm](http://www.wjgnet.com/1948-9358/g_info_20100107170340.htm).

**Proof of financial support**

For paper supported by a foundation, authors should provide a copy of the document and serial number of the foundation.

**Links to documents related to the manuscript**

*WJD* will be initiating a platform to promote dynamic interactions between the editors, peer reviewers, readers and authors. After a manuscript is published online, links to the PDF version of the submitted manuscript, the peer-reviewers' report and the revised manuscript will be put on-line. Readers can make comments on the peer reviewer's report, authors' responses to peer reviewers, and the revised manuscript. We hope that authors will benefit from this feedback and be able to revise the manuscript accordingly in a timely manner.

**Science news releases**

Authors of accepted manuscripts are suggested to write a science news item to promote their articles. The news will be released rapidly at EurekaAlert/AAAS (<http://www.eurekaalert.org>). The title for news items should be less than 90 characters; the summary should be less than 75 words; and main body less than 500 words. Science news items should be lawful, ethical, and strictly based on your original content with an attractive title and interesting pictures.

**Publication fee**

*WJD* is an international, peer-reviewed, OA, online journal. Articles published by this journal are distributed under the terms of the Creative Commons Attribution Non-commercial License, which permits use, distribution, and reproduction in any medium, provided the original work is properly cited, the use is non commercial and is otherwise in compliance with the license. Authors of accepted articles must pay a publication fee. Publication fee: 600 USD per article. Editorial, topic highlights, book reviews and letters to the editor are published free of charge.